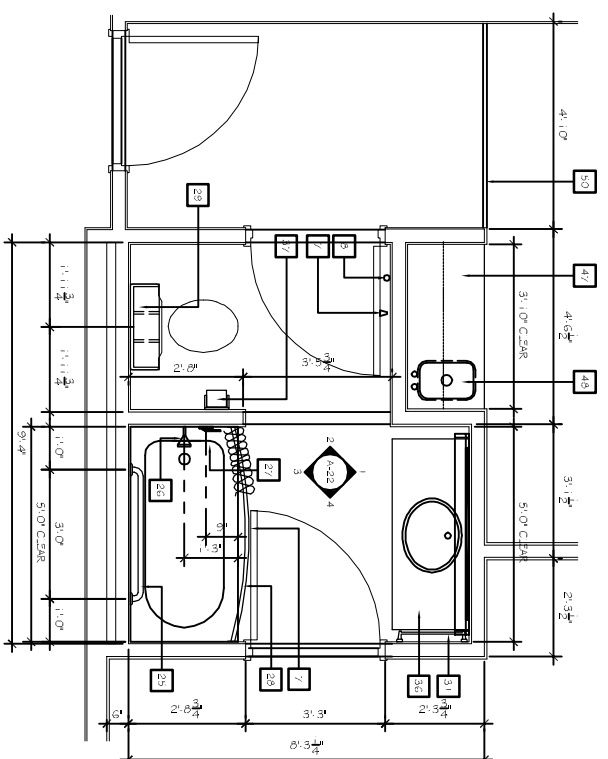
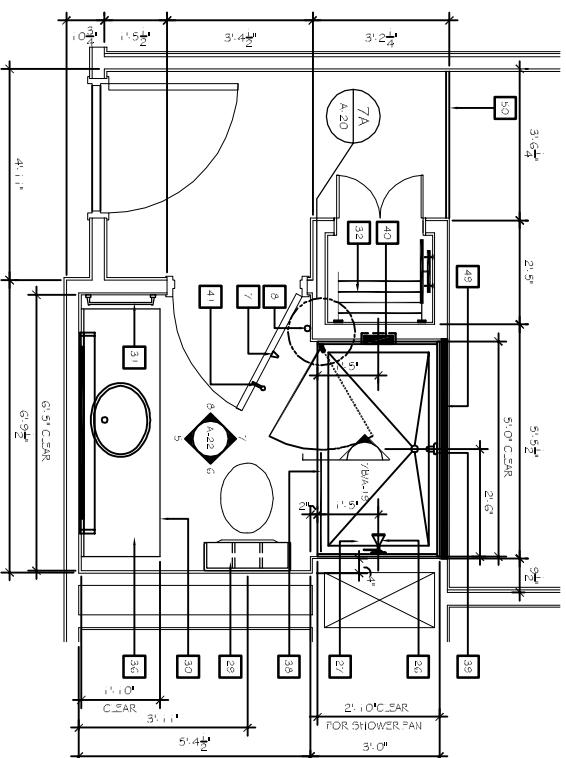


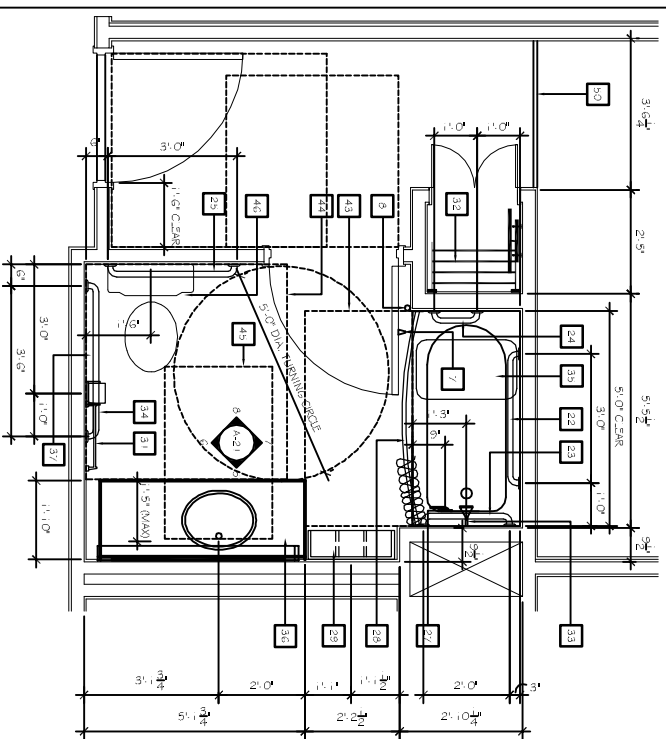
1 STANDARD BATH W/ TUB  
SCALE: 1/2" = 1'-0"



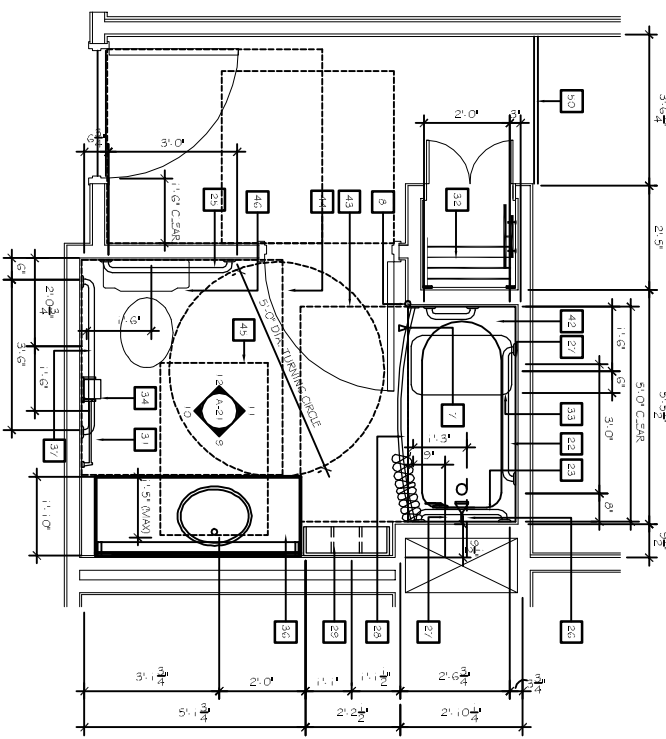
3 2-ROOM SUITE BATH  
SCALE: 1/2" = 1'-0"



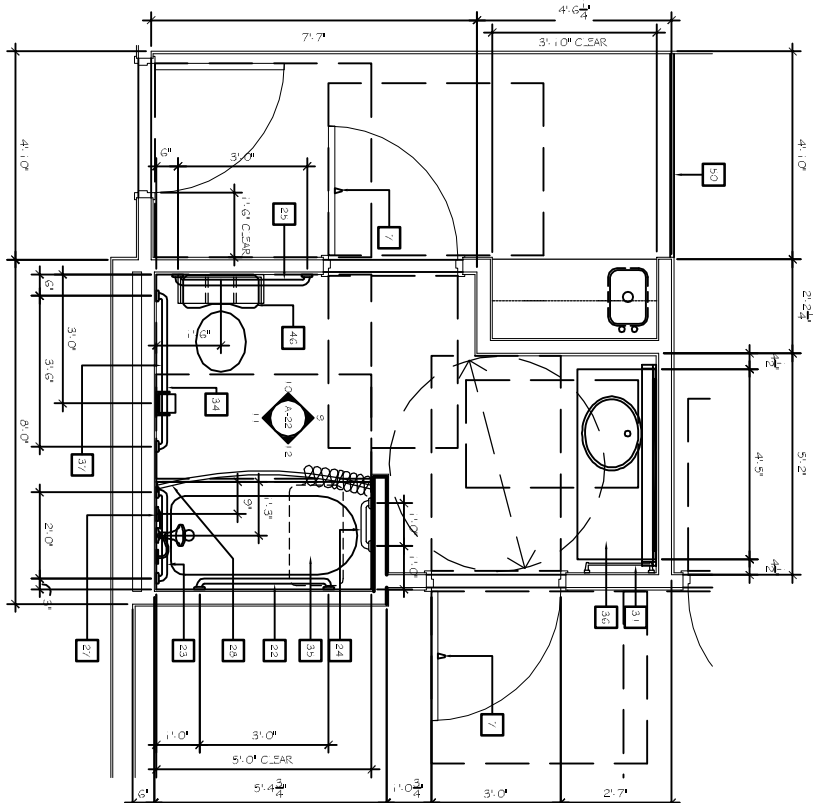
5 STANDARD BATH W/ WALK-IN SHOWER  
SCALE: 1/2" = 1'-0"



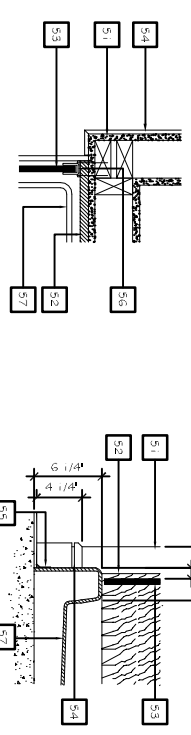
2 ACCESSIBLE BATH W/ TUB  
SCALE: 1/2" = 1'-0"



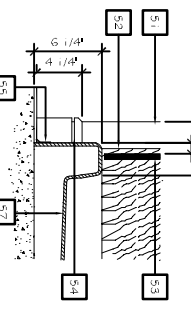
4 ACCESSIBLE BATH W/ ROLL-IN SHOWER  
SCALE: 1/2" = 1'-0"



6 ACCESSIBLE BATH @ 2-ROOM SUITE  
SCALE: 1/2" = 1'-0"



DETAIL - A



DETAIL - B

7 DETAILS AT WALK-IN SHOWER  
SCALE: 1/2" = 1'-0"

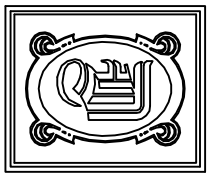
NOTE: PLAN DIMENSIONS SHOWN ON THIS DRAWING ARE TO FACE OF FINISH WALLS UNLESS NOTED OTHERWISE.  
FOR F.P.E. SCHEDULE SEE VIBRANT DESIGN SCHEDULE MANUAL REFER A-01 FOR PARTITION TYPES

GENERAL NOTES	
1.	ELECTRICAL OUTLETS IN ADJACENT ROOMS OF THE SAME TYPE SHALL BE OFFSET A MINIMUM OF 6" (SEE 50102).
2.	REFER TO SCHEDULE FOR FINISH TYPES FOR GUEST ROOM.
3.	A.L. = ALL DIMENSIONS ARE TO FACE OF STUD.

REFER FINISH AS SECTION 5000 FOR PAINT AND MATERIALS. (SEE 200)

KEY SCHEDULE

1. CABINETS AND BASES
2. TUBLINE FINISH - REFER TO FINISH SCHEDULE
3. CLOTHING KIOSK
4. TRIM - WALL AND CORNER TRIMMING WITH ROUGH OPENINGS
5. REINFORCING BLOCKING IN WALL
6. TUBLINE CURBING - REFER TO FINISH SCHEDULE
7. DOOR HANGING DOOR STOP
8. WALL HANGING DOOR STOP
9. DECORATIVE WOOD MOLDINGS
10. COORDINATE WOOD MOLDINGS
11. COORDINATE WOOD MOLDINGS
12. COORDINATE WOOD MOLDINGS
13. GYPSUM BOARD REPAIR AT HEAD AND SILL
14. TELEPHONE DATA DISPLAY HOUSING, PROVIDE 3/4" CONDUIT RUN
15. TELEPHONE OUTLET - REFER TO ROOM PLANS AND UTILITIES
16. TELEPHONE OUTLET - REFER TO ROOM PLANS AND UTILITIES
17. FOR DIMENSIONS AND LOCATION
18. LIGHT SWITCH - REFER TO ROOM PLANS AND UTILITIES
19. LIGHT SWITCH - REFER TO ROOM PLANS AND UTILITIES
20. CONNECTING BLOCKS - SEE BUILDING PLAN FOR LOCATION
21. MORE INFORMATION
22. 220V. OUTLET - REFER TO ELECTRICAL PLANS FOR MORE INFORMATION
23. DRINK OUTLET
24. MODIFY HEIGHT OF HORIZONTAL NIGHT STAY AND WALL UNIT'S BASES TO MEET FINISH SCHEDULE
25. 1" GRAB BAR @ 34" A.F.F. @ 6" ABOVE RISER TO CONTRIBUTE
26. 1" GRAB BAR @ 34" A.F.F. TO CONTRIBUTE
27. 1" GRAB BAR @ 34" A.F.F. TO CONTRIBUTE
28. SHOWER SHOWER HEAD @ 50" A.F.F.
29. SHOWER CONTROL VALVE
30. CORKED SHOWER ROD @ 50" A.F.F. @ 6" DIA. MIN. TOWEL RACK
31. TOWEL RACK
32. TOWEL RACK HOOKS MOUNTED UNDER VANITY FOR 4H MOUNTING
33. TOWEL BAR @ 48" A.F.F.
34. CLOSET SHUDDER (CLOSET) SHUDDER @ 7/2" A.F.F. (52" MAX) @ ACCESSIBLE HOOKS
35. HAND HELD SHOWER HEAD W/ ADJUSTABLE MOUNTING BAR
36. 42" GRAB BAR @ 34" A.F.F. TO CONTRIBUTE
37. RADIANT HEAT SHOWER SHUDDER
38. GRANITE/ COUNTER TOP W/ VERTICAL FINISH FOR ACCESSIBLE FINISH
39. GRANITE/ COUNTER TOP W/ VERTICAL FINISH FOR ACCESSIBLE FINISH
40. GRANITE/ COUNTER TOP W/ VERTICAL FINISH FOR ACCESSIBLE FINISH
41. GRANITE/ COUNTER TOP W/ VERTICAL FINISH FOR ACCESSIBLE FINISH
42. GRANITE/ COUNTER TOP W/ VERTICAL FINISH FOR ACCESSIBLE FINISH
43. GRANITE/ COUNTER TOP W/ VERTICAL FINISH FOR ACCESSIBLE FINISH
44. GRANITE/ COUNTER TOP W/ VERTICAL FINISH FOR ACCESSIBLE FINISH
45. GRANITE/ COUNTER TOP W/ VERTICAL FINISH FOR ACCESSIBLE FINISH
46. GRANITE/ COUNTER TOP W/ VERTICAL FINISH FOR ACCESSIBLE FINISH
47. GRANITE/ COUNTER TOP W/ VERTICAL FINISH FOR ACCESSIBLE FINISH
48. GRANITE/ COUNTER TOP W/ VERTICAL FINISH FOR ACCESSIBLE FINISH
49. GRANITE/ COUNTER TOP W/ VERTICAL FINISH FOR ACCESSIBLE FINISH
50. GRANITE/ COUNTER TOP W/ VERTICAL FINISH FOR ACCESSIBLE FINISH
51. GRANITE/ COUNTER TOP W/ VERTICAL FINISH FOR ACCESSIBLE FINISH
52. GRANITE/ COUNTER TOP W/ VERTICAL FINISH FOR ACCESSIBLE FINISH
53. GRANITE/ COUNTER TOP W/ VERTICAL FINISH FOR ACCESSIBLE FINISH
54. GRANITE/ COUNTER TOP W/ VERTICAL FINISH FOR ACCESSIBLE FINISH
55. GRANITE/ COUNTER TOP W/ VERTICAL FINISH FOR ACCESSIBLE FINISH
56. GRANITE/ COUNTER TOP W/ VERTICAL FINISH FOR ACCESSIBLE FINISH
57. GRANITE/ COUNTER TOP W/ VERTICAL FINISH FOR ACCESSIBLE FINISH
58. GRANITE/ COUNTER TOP W/ VERTICAL FINISH FOR ACCESSIBLE FINISH
59. GRANITE/ COUNTER TOP W/ VERTICAL FINISH FOR ACCESSIBLE FINISH
60. GRANITE/ COUNTER TOP W/ VERTICAL FINISH FOR ACCESSIBLE FINISH
61. GRANITE/ COUNTER TOP W/ VERTICAL FINISH FOR ACCESSIBLE FINISH
62. GRANITE/ COUNTER TOP W/ VERTICAL FINISH FOR ACCESSIBLE FINISH
63. GRANITE/ COUNTER TOP W/ VERTICAL FINISH FOR ACCESSIBLE FINISH
64. GRANITE/ COUNTER TOP W/ VERTICAL FINISH FOR ACCESSIBLE FINISH
65. GRANITE/ COUNTER TOP W/ VERTICAL FINISH FOR ACCESSIBLE FINISH
66. GRANITE/ COUNTER TOP W/ VERTICAL FINISH FOR ACCESSIBLE FINISH
67. GRANITE/ COUNTER TOP W/ VERTICAL FINISH FOR ACCESSIBLE FINISH
68. GRANITE/ COUNTER TOP W/ VERTICAL FINISH FOR ACCESSIBLE FINISH
69. GRANITE/ COUNTER TOP W/ VERTICAL FINISH FOR ACCESSIBLE FINISH
70. GRANITE/ COUNTER TOP W/ VERTICAL FINISH FOR ACCESSIBLE FINISH
71. GRANITE/ COUNTER TOP W/ VERTICAL FINISH FOR ACCESSIBLE FINISH
72. GRANITE/ COUNTER TOP W/ VERTICAL FINISH FOR ACCESSIBLE FINISH
73. GRANITE/ COUNTER TOP W/ VERTICAL FINISH FOR ACCESSIBLE FINISH
74. GRANITE/ COUNTER TOP W/ VERTICAL FINISH FOR ACCESSIBLE FINISH
75. GRANITE/ COUNTER TOP W/ VERTICAL FINISH FOR ACCESSIBLE FINISH
76. GRANITE/ COUNTER TOP W/ VERTICAL FINISH FOR ACCESSIBLE FINISH
77. GRANITE/ COUNTER TOP W/ VERTICAL FINISH FOR ACCESSIBLE FINISH
78. GRANITE/ COUNTER TOP W/ VERTICAL FINISH FOR ACCESSIBLE FINISH
79. GRANITE/ COUNTER TOP W/ VERTICAL FINISH FOR ACCESSIBLE FINISH
80. GRANITE/ COUNTER TOP W/ VERTICAL FINISH FOR ACCESSIBLE FINISH
81. GRANITE/ COUNTER TOP W/ VERTICAL FINISH FOR ACCESSIBLE FINISH
82. GRANITE/ COUNTER TOP W/ VERTICAL FINISH FOR ACCESSIBLE FINISH
83. GRANITE/ COUNTER TOP W/ VERTICAL FINISH FOR ACCESSIBLE FINISH
84. GRANITE/ COUNTER TOP W/ VERTICAL FINISH FOR ACCESSIBLE FINISH
85. GRANITE/ COUNTER TOP W/ VERTICAL FINISH FOR ACCESSIBLE FINISH
86. GRANITE/ COUNTER TOP W/ VERTICAL FINISH FOR ACCESSIBLE FINISH
87. GRANITE/ COUNTER TOP W/ VERTICAL FINISH FOR ACCESSIBLE FINISH
88. GRANITE/ COUNTER TOP W/ VERTICAL FINISH FOR ACCESSIBLE FINISH
89. GRANITE/ COUNTER TOP W/ VERTICAL FINISH FOR ACCESSIBLE FINISH
90. GRANITE/ COUNTER TOP W/ VERTICAL FINISH FOR ACCESSIBLE FINISH
91. GRANITE/ COUNTER TOP W/ VERTICAL FINISH FOR ACCESSIBLE FINISH
92. GRANITE/ COUNTER TOP W/ VERTICAL FINISH FOR ACCESSIBLE FINISH
93. GRANITE/ COUNTER TOP W/ VERTICAL FINISH FOR ACCESSIBLE FINISH
94. GRANITE/ COUNTER TOP W/ VERTICAL FINISH FOR ACCESSIBLE FINISH
95. GRANITE/ COUNTER TOP W/ VERTICAL FINISH FOR ACCESSIBLE FINISH
96. GRANITE/ COUNTER TOP W/ VERTICAL FINISH FOR ACCESSIBLE FINISH
97. GRANITE/ COUNTER TOP W/ VERTICAL FINISH FOR ACCESSIBLE FINISH
98. GRANITE/ COUNTER TOP W/ VERTICAL FINISH FOR ACCESSIBLE FINISH
99. GRANITE/ COUNTER TOP W/ VERTICAL FINISH FOR ACCESSIBLE FINISH
100. GRANITE/ COUNTER TOP W/ VERTICAL FINISH FOR ACCESSIBLE FINISH



**DAMMON ENGINEERING, INC.**  
 CHIEF ENGINEER  
 ENAMETT DAMMON, P.E.  
 CHIEF ARCHITECT  
 ROBERT WILTSE

554 OLD SPANISH TRAIL  
 SUITE 111, LA 70458  
 OFFICE: 985-649-5832  
 FAX: 985-641-5950

WWW.DAMMONENGINEERING.COM  
 DAMMONENR@BELL-SOUTH.NET

ARCHITECTURE  
 ENGINEERING  
 STUDIES  
 PLANNING  
 INVESTIGATION  
 EXPERT WITNESS

LA QUINTA INN & SUITES  
 SPORTSMAN PARK  
 LOT 14  
 CABLEAS PARKWAY  
 GONZALES LOUISIANA

ADA BATHROOMS

REV:  
 SCALE: AS NOTED  
 JOB#: 21141  
 DATE: 07-03-12  
 SHEET 25

A-20

OF 36