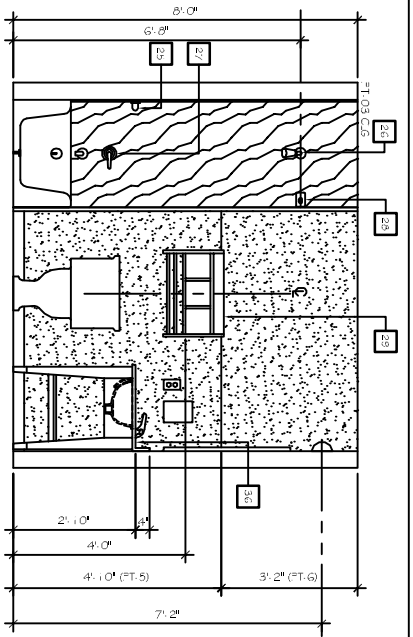
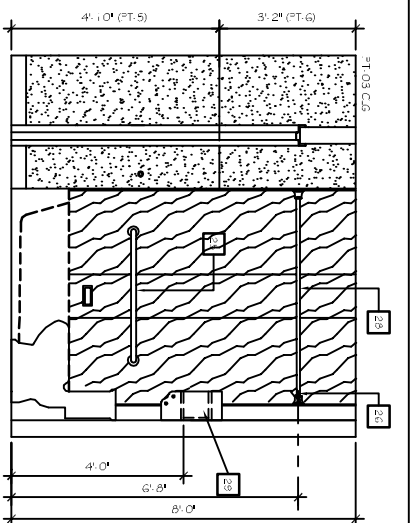


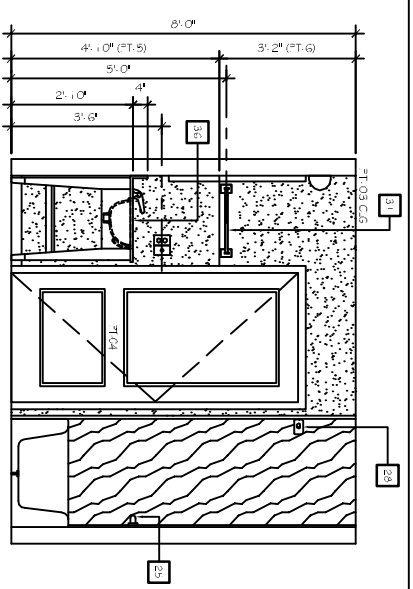
1 BATH ELEVATION
SCALE: 1/2" = 1'-0"



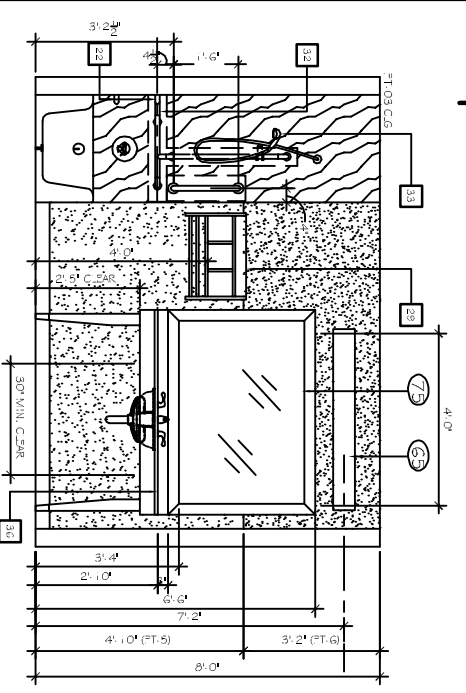
2 BATH ELEVATION
SCALE: 1/2" = 1'-0"



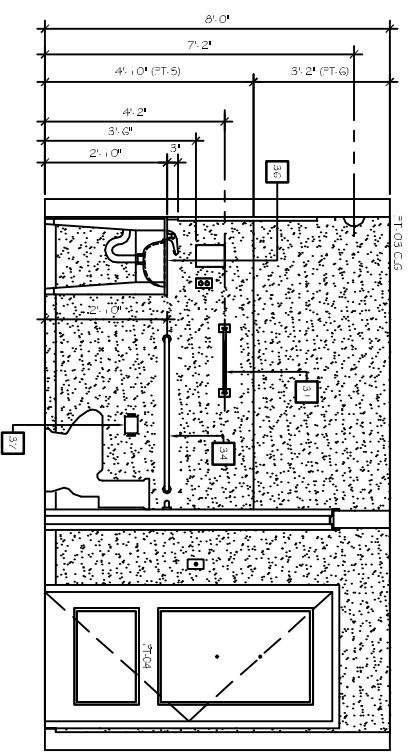
3 BATH ELEVATION
SCALE: 1/2" = 1'-0"



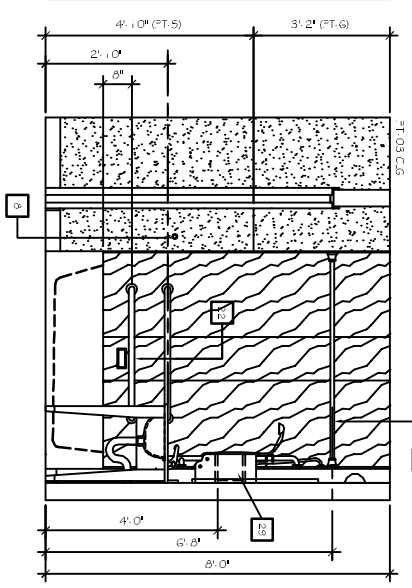
4 BATH ELEVATION
SCALE: 1/2" = 1'-0"



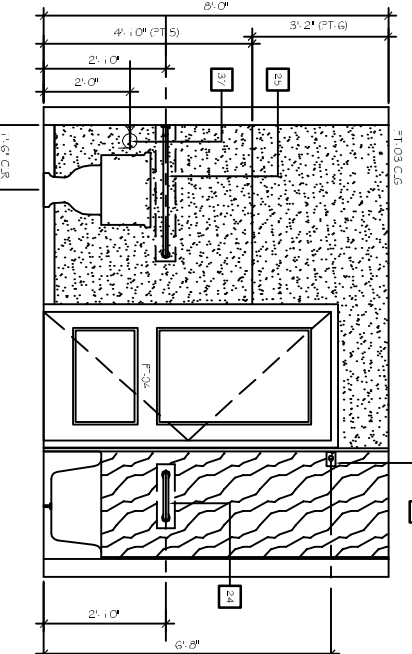
5 BATH ELEVATION
SCALE: 1/2" = 1'-0"



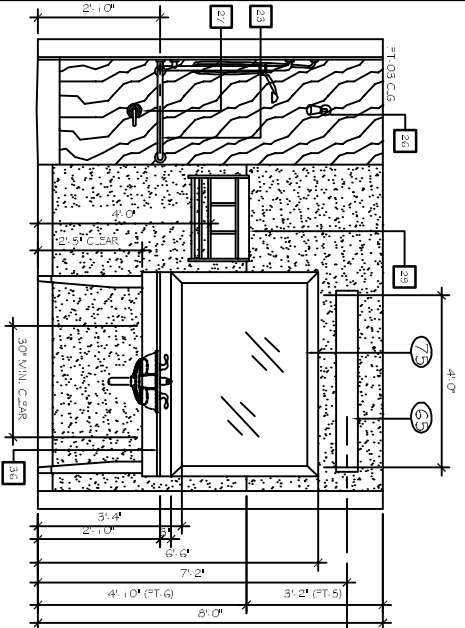
6 BATH ELEVATION
SCALE: 1/2" = 1'-0"



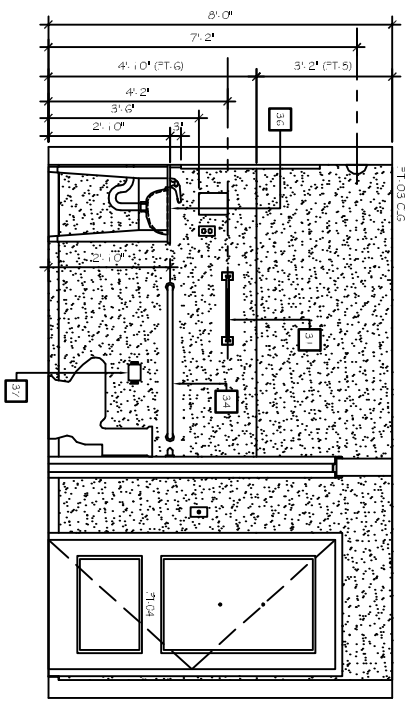
7 BATH ELEVATION
SCALE: 1/2" = 1'-0"



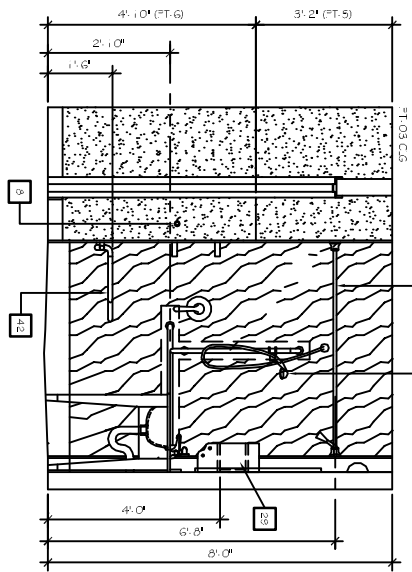
8 BATH ELEVATION
SCALE: 1/2" = 1'-0"



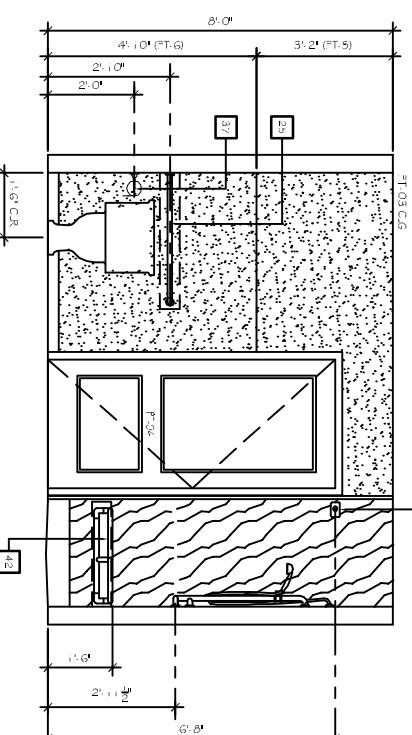
9 BATH ELEVATION
SCALE: 1/2" = 1'-0"



10 BATH ELEVATION
SCALE: 1/2" = 1'-0"



11 BATH ELEVATION
SCALE: 1/2" = 1'-0"

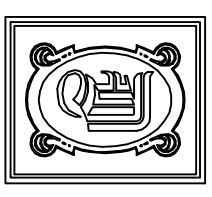


12 BATH ELEVATION
SCALE: 1/2" = 1'-0"

GENERAL NOTES

REFER DRAWING A-410 FOR XX RENOVATIONS
FOR F.F.E. SCHEDULE SEE VIBRANT DESIGN SCHEDULE MANUAL
REFER A-401 FOR PARTITION TYPES

1. ELECTRICAL OUTLETS IN ADJACENT ROOMS OF THE SAME TYPE SHALL BE OFFSET A MINIMUM OF 8" SEE 39 STUD. TYP.
2. REFER TO BUILDING PLANS FOR LOCATION OF GUEST ROOM.
3. ALL DIMENSIONS ARE TO FACE UNLESS NOTED OTHERWISE.



DAMMON ENGINEERING, INC.
CHIEF ENGINEER
EMMETT DAMMON, P.E.
CHIEF ARCHITECT
ROBERT WILTSE

554 OLD SPANISH TRAIL
SUITE L, LA. 70458
OFFICE: 985-649-5832
FAX: 985-641-5950

WEBSITE:
WWW.DAMMONENGINEERING.COM
EMAIL:
DAMMONING@BLSOUTH.NET

ARCHITECTURE
ENGINEERING
STUDIES
PLANNING
INVESTIGATION
EXPERT WITNESS

LA QUINTA
INN & SUITES

SPORTSMAN PARK
LOT 14
CABLEAS PARKWAY
GONZALES
LOUISIANA

BATH
ELEVATIONS

REV:

SCALE: AS NOTED

JOB#: 2141

DATE: 07-03-12

SHEET 26

A-21

OF 36