

DAMMON
ENGINEERING, INC.

CHIEF ENGINEER
EMMETT
DAMMON, P.E.

CHIEF ARCHITECT
ROBERT
WILTSE

554 OLD SPANISH TRAIL
SUDELL, LA. 70458
OFFICE: 985-649-5832
FAX: 985-641-5950

WEBSITE:
WWW.DAMMONENGINEERING.COM
EMAIL:
DAMMONENG@BELLSOUTH.NET

ARCHITECTURE
ENGINEERING
STUDIES
PLANNING
INVESTIGATION
EXPERT WITNESSES

LA QUINTA
INN & SUITES

SPORTSMAN PARK
LOT 14
CABLEAS PARKWAY
GONZALES
LOUISIANA

FRONT
& REAR
ELEVATIONS

REV:

SCALE: AS NOTED

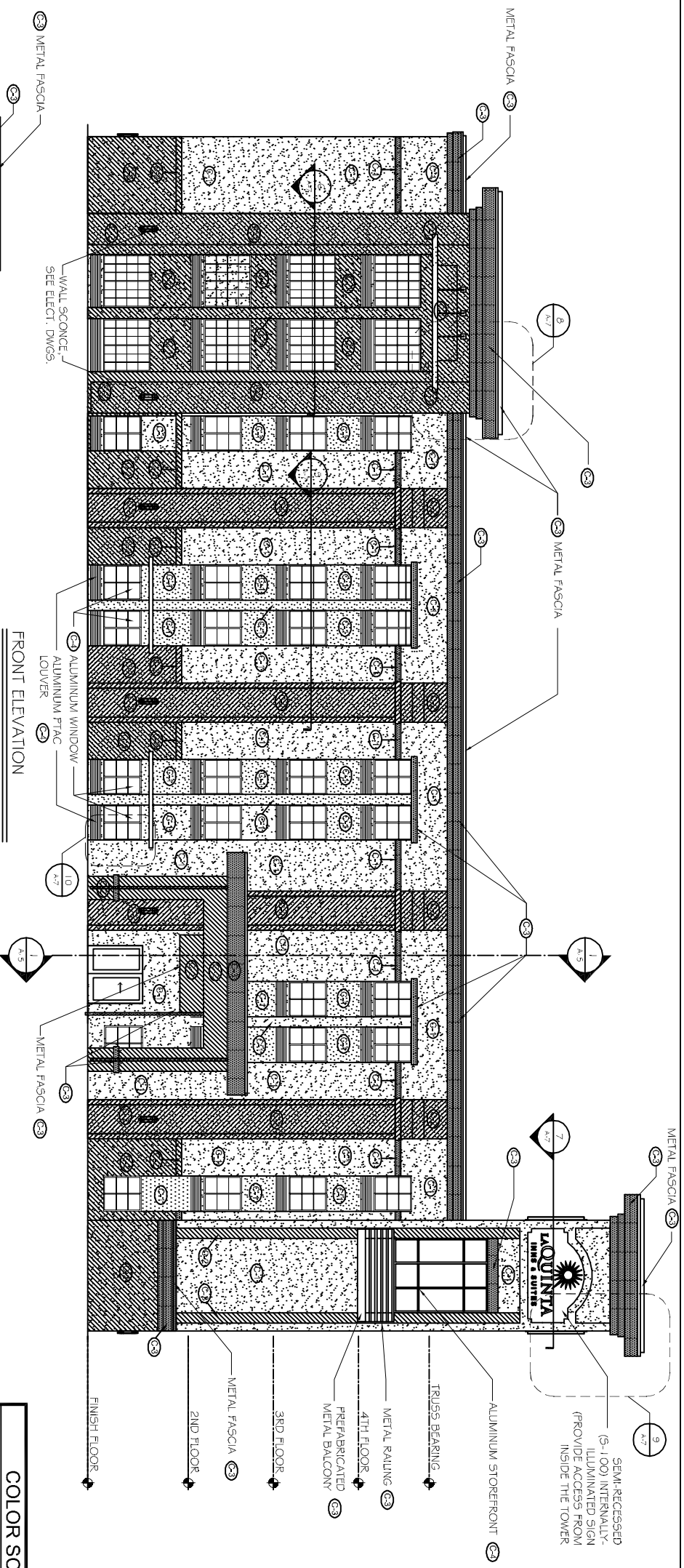
JOB#: 2141

DATE: 07-03-12

SHEET 8

A-3

OF 36



COLOR SCHEDULE	
(C-1)	EIFS (FINE SAND TEXTURE) 5W-6387 - COMPATIBLE CREAM
(C-2)	EIFS (FINE SAND TEXTURE) 5W-6374 - TORCHLIGHT
(C-3)	EIFS (LIMESTONE TEXTURE) PAINTED METAL AWNINGS, AND PREFAB. BALCONY 5W-0055 - LIGHT FRENCH GRAY
(C-4)	ALUMINUM (WINDOWS, STOREFRONT, & PTAC GRILLS) - WHITE

