

DAMMON
ENGINEERING, INC.

CHIEF ENGINEER
EMMETT
DAMMON, P.E.
CHIEF ARCHITECT
ROBERT
WILTSE

554 OLD SPANISH TRAIL
SLIDELL, LA, 70458
OFFICE: 985-649-5832
FAX: 985-641-5950

WEBSITE: WWW.DAMMONENGINEERING.COM
EMAIL: DAMMONENG@BELL-SOUTH.NET

ARCHITECTURE
ENGINEERING
STUDIES
PLANNING
INVESTIGATION
EXPERT WITNESS

LA QUINTA
INN & SUITES

SPORTSMAN PARK
LOT 14
CABLEAS PARKWAY
GONZALES
LOUISIANA

BUILDING
SECTION

REV:

SCALE: AS NOTED

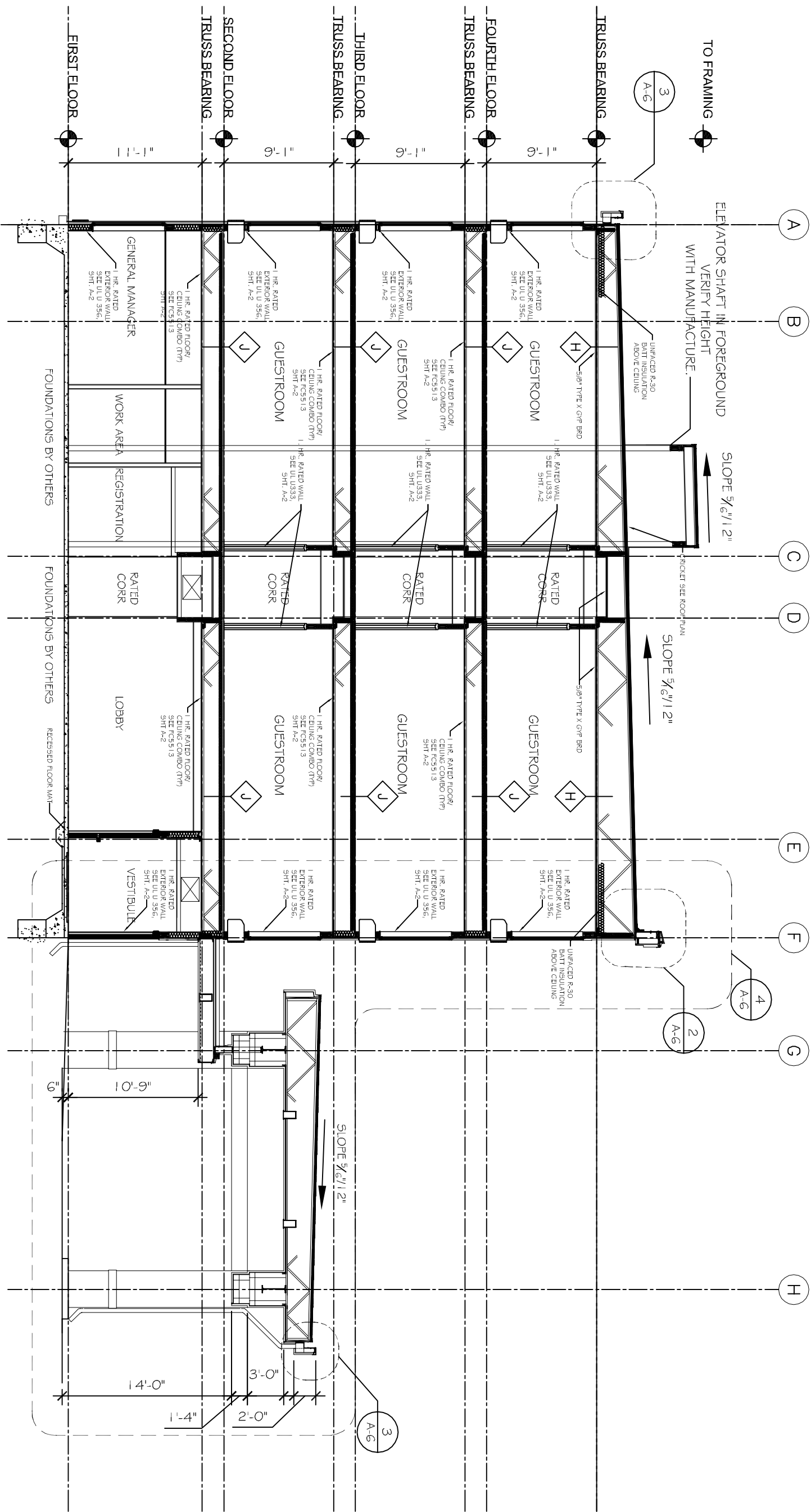
JOB#: 2141

DATE: 07-03-12

SHEET 10

A-5

OF 36



SECTION @ LOBBY ENTRANCE

SCALE: 1/4" = 1'-0"

- NOTES:
1. THIS DRAWING IS USED TO SHOW SPATIAL RELATIONSHIPS. REFER TO WALL SECTIONS, STRUCTURAL DRAWINGS, AND DETAILS FOR MORE DETAILED INFORMATION.
 2. PRE-ENGINEERING FLOOR & ROOF SYSTEM TRUSSES BY OTHERS. INSTALL AND PROVIDE A COMPLETE FIRE RATED FLOOR AND CEILING ASSEMBLY PER MANUFACTURER'S RECOMMENDATIONS.