

DAMMON
ENGINEERING, INC.

CHIEF ENGINEER
EMMETT
DAMMON, P.E.

CHIEF ARCHITECT
ROBERT
WILTSE

554 OLD SPANISH TRAIL
SLIDELL, LA. 70456
OFFICE: 985-649-5832
FAX: 985-641-5950

WEBSITE:
WWW.DAMMONENGINEERING.COM

ARCHITECTURE
ENGINEERING
STUDIES
PLANNING

INVESTIGATION
EXPERT WITNESS

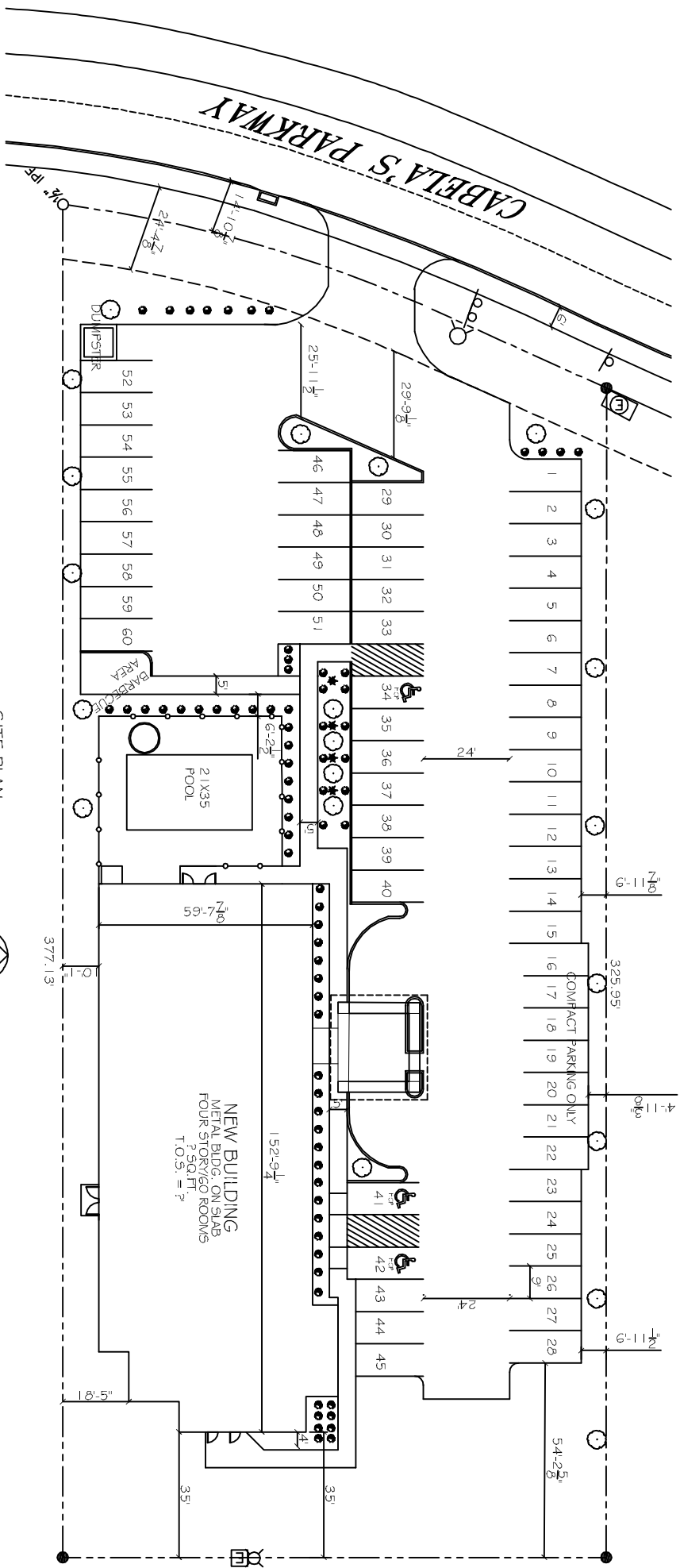
LA QUINTA
INN & SUITES

SPORTSMAN'S PARK
LOT 14
CABELLA'S PARKWAY
GONZALES
LOUISIANA

SITE & LANDSCAPING
PLAN

SITE LEGEND

- - - - - PROPERTY LINE
- - - - - SETBACK LINE
- - - - - BUFFER ZONE LINE
- UTIL. EASEMENT LINE
- - - - - G' OPAQUE FENCE
- ⊕ - - - - - HANDICAP PARKING
- ♿ - - - - - HANDICAP PARKING SIGN
- ⊞ - - - - - LITTER RECEPTACLE
- ➔ - - - - - TRAFFIC ARROW



SITE PLAN
SCALE: 1"=20'-0"



PARKING REQUIREMENTS
REQUIRED: 1 SPACE PER ROOM
PROVIDED: 60 SPACES

REV:
SCALE: AS NOTED
JOB#: 2121
DATE: 06-06-12
SHEET