

DAMMON
ENGINEERING, INC.

CHIEF ENGINEER
EWMETT
DAMMON, P.E.
CHIEF ARCHITECT
ROBERT
MILTSE

1095 FLORIDA AVENUE
SLIDELL, LA. 70458
OFFICE: 985-649-5632
FAX: 985-641-5950

WEBSITE:
WWW.DAMMONENGINEERING.COM
EMAIL:
DAMMONENG@BELL-SOUTH.NET

ARCHITECTURE
ENGINEERING
STUDIES
PLANNING
INVESTIGATION
EXPERT WITNESS

LA QUINTA
INNS
AND
SUITES

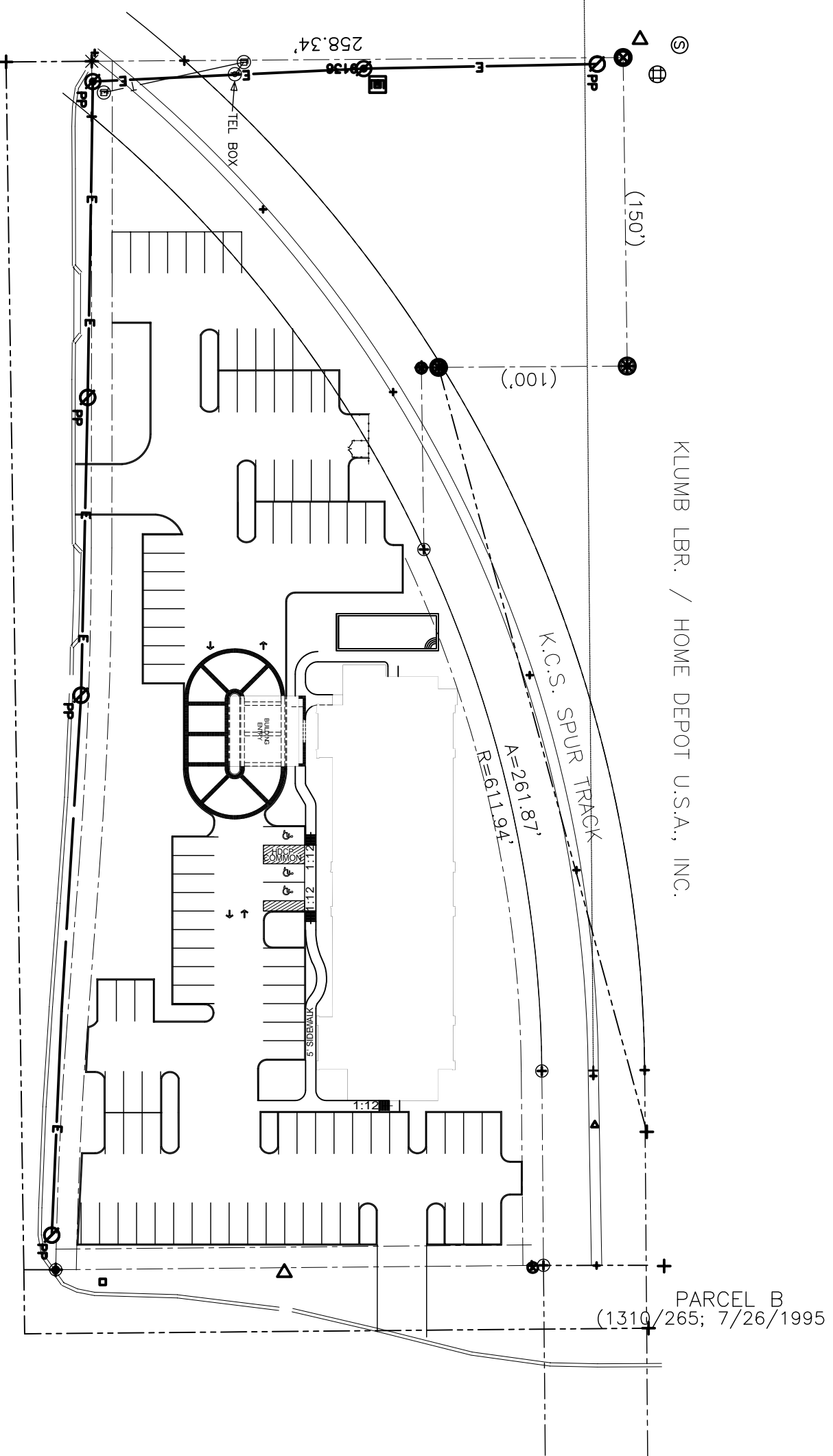
GULFPORT, MS

SITE
PLAN

REV:
SCALE: AS NOTED
JOB#:
DATE: 10-20-10
SHEET

OF

C-1



CREOSOTE ROAD

KLUMB LBR. / HOME DEPOT U.S.A., INC.

SITE PLAN
SCALE 1"=30'-0"



- 1 1/2 PARKING PLACES REQUIRED FOR GUEST
- 1 PARKING PLACE REQUIRED FOR EACH EMPLOYEE
- 1 PARKING PLACE PER 50 SQ. FT. OF RESTAURANT

TALLY:

- 120 PARKING PLACES REQUIRED FOR GUEST / 94 SHOWN
- 2 PARKING PLACES REQUIRED FOR EMPLOYEES / 0 SHOWN
- 1 PER 50 SQ. FT. OF RESTAURANT / 0 SHOWN

26 PARKING PLACES SHORT