

DAMMON
ENGINEERING, INC.

CHIEF ENGINEER
EMMETT
DAMMON, P.E.
CHIEF ARCHITECT
ROBERT
WILTSE

1095 FLORIDA AVENUE
SLIDELL, LA. 70456
OFFICE: 985-649-5932
FAX: 985-641-5950

WEBSITE:
WWW.DAMMONENGINEERING.COM
EMAIL:
DAMMONENG@BELLOUTH.NET

ARCHITECTURE
ENGINEERING
STUDIES
PLANNING
INVESTIGATION
EXPERT WITNESS

LA QUINTA
INNS
AND
SUITES

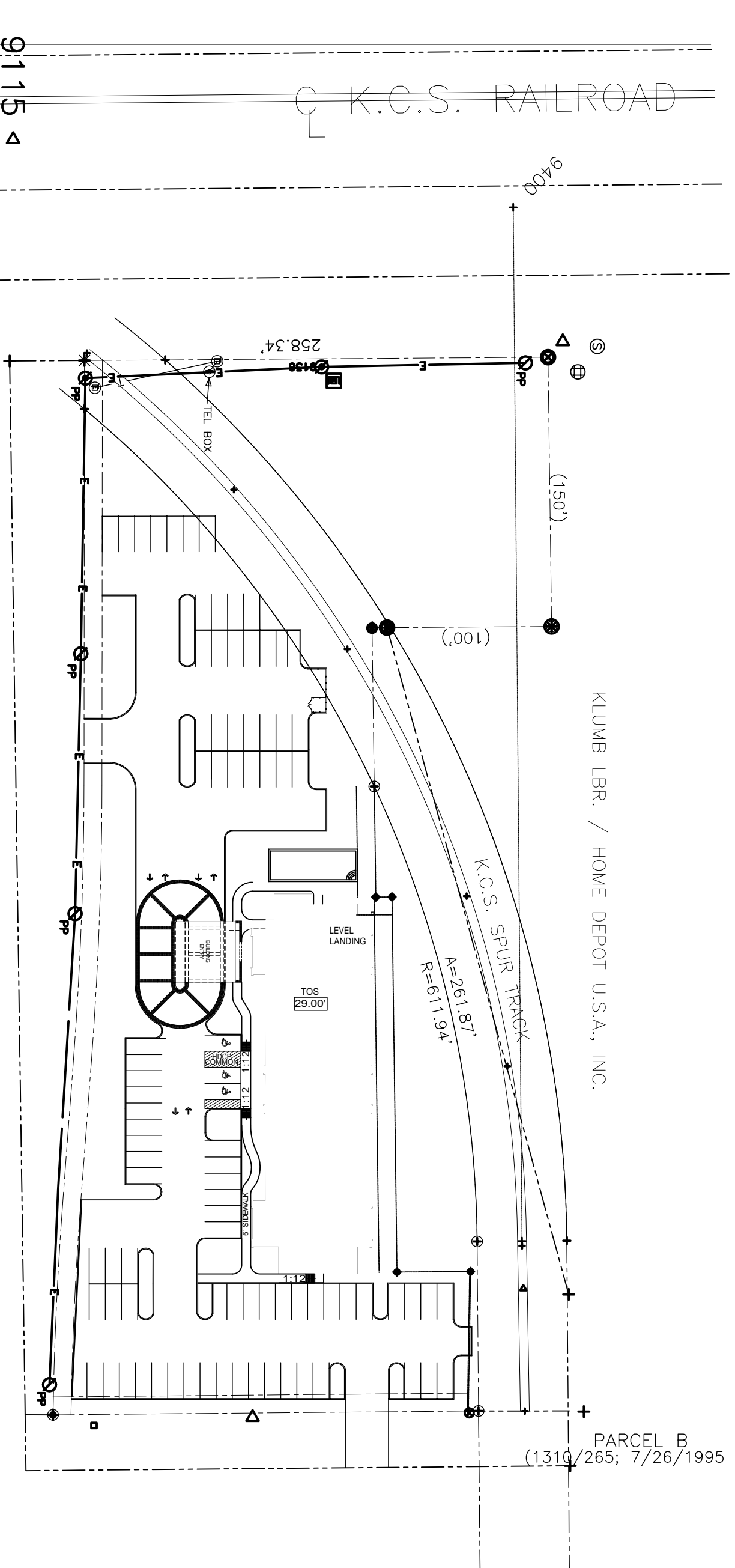
GULFPORT, MS

SITE
PLAN

REV:	
SCALE:	AS NOTED
JOB#:	
DATE:	10-20-10
SHEET	

C-1

OF



CREOSOTE ROAD

K.C.S. RAILROAD

KLUMB LBR. / HOME DEPOT U.S.A., INC.

PARCEL B
(1310/265; 7/26/1995)

- 1 1/2 PARKING PLACES REQUIRED FOR GUEST
- 1 PARKING PLACE REQUIRED FOR EACH EMPLOYEE
- 1 PARKING PLACE PER 50 SQ. FT. OF RESTAURANT

TALLY:

- 143 PARKING PLACES REQUIRED FOR GUEST / 88 SHOWN
- 2 PARKING PLACES REQUIRED FOR EMPLOYEES / 0 SHOWN
- 1 PER 50 SQ. FT. OF RESTAURANT / 0 SHOWN

97 PARKING PLACES SHORT



SITE PLAN
SCALE 1"=30'-0"

9115
9400
3459
3564
0500
9664 NO. 1]