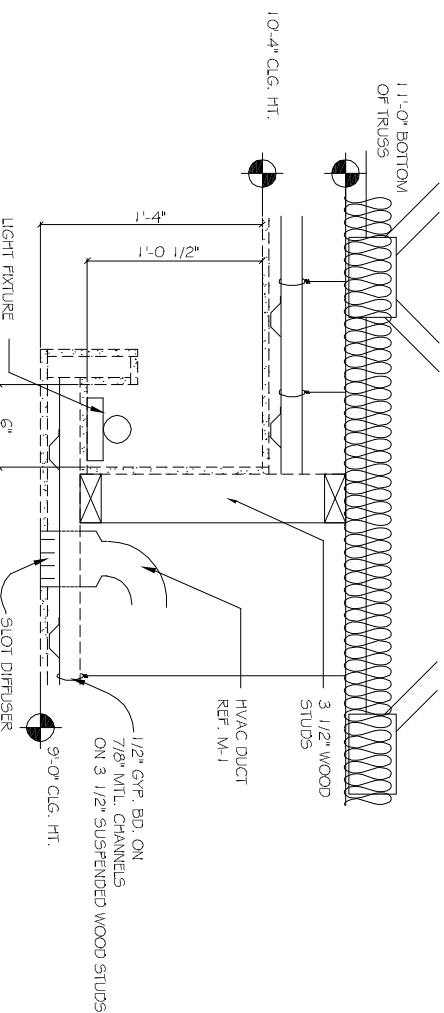


FINISHES

PRODUCT CODE	MANUFACTURER	PRODUCT INFORMATION / #
CS1	ALUMINUM	ALUM. COR. STATION
CS2	ALUM. COR. STATION	ALUM. COR. STATION
CS3	ALUM. COR. STATION	ALUM. COR. STATION
CS4	ALUM. COR. STATION	ALUM. COR. STATION
CS5	ALUM. COR. STATION	ALUM. COR. STATION
CS6	ALUM. COR. STATION	ALUM. COR. STATION
CS7	ALUM. COR. STATION	ALUM. COR. STATION
CS8	ALUM. COR. STATION	ALUM. COR. STATION
CS9	ALUM. COR. STATION	ALUM. COR. STATION
CS10	ALUM. COR. STATION	ALUM. COR. STATION
CS11	ALUM. COR. STATION	ALUM. COR. STATION
CS12	ALUM. COR. STATION	ALUM. COR. STATION
CS13	ALUM. COR. STATION	ALUM. COR. STATION
CS14	ALUM. COR. STATION	ALUM. COR. STATION
CS15	ALUM. COR. STATION	ALUM. COR. STATION
CS16	ALUM. COR. STATION	ALUM. COR. STATION
CS17	ALUM. COR. STATION	ALUM. COR. STATION
CS18	ALUM. COR. STATION	ALUM. COR. STATION
CS19	ALUM. COR. STATION	ALUM. COR. STATION
CS20	ALUM. COR. STATION	ALUM. COR. STATION
CS21	ALUM. COR. STATION	ALUM. COR. STATION
CS22	ALUM. COR. STATION	ALUM. COR. STATION
CS23	ALUM. COR. STATION	ALUM. COR. STATION
CS24	ALUM. COR. STATION	ALUM. COR. STATION
CS25	ALUM. COR. STATION	ALUM. COR. STATION
CS26	ALUM. COR. STATION	ALUM. COR. STATION
CS27	ALUM. COR. STATION	ALUM. COR. STATION
CS28	ALUM. COR. STATION	ALUM. COR. STATION
CS29	ALUM. COR. STATION	ALUM. COR. STATION
CS30	ALUM. COR. STATION	ALUM. COR. STATION
CS31	ALUM. COR. STATION	ALUM. COR. STATION
CS32	ALUM. COR. STATION	ALUM. COR. STATION
CS33	ALUM. COR. STATION	ALUM. COR. STATION
CS34	ALUM. COR. STATION	ALUM. COR. STATION
CS35	ALUM. COR. STATION	ALUM. COR. STATION
CS36	ALUM. COR. STATION	ALUM. COR. STATION
CS37	ALUM. COR. STATION	ALUM. COR. STATION
CS38	ALUM. COR. STATION	ALUM. COR. STATION
CS39	ALUM. COR. STATION	ALUM. COR. STATION
CS40	ALUM. COR. STATION	ALUM. COR. STATION
CS41	ALUM. COR. STATION	ALUM. COR. STATION
CS42	ALUM. COR. STATION	ALUM. COR. STATION
CS43	ALUM. COR. STATION	ALUM. COR. STATION
CS44	ALUM. COR. STATION	ALUM. COR. STATION
CS45	ALUM. COR. STATION	ALUM. COR. STATION
CS46	ALUM. COR. STATION	ALUM. COR. STATION
CS47	ALUM. COR. STATION	ALUM. COR. STATION
CS48	ALUM. COR. STATION	ALUM. COR. STATION
CS49	ALUM. COR. STATION	ALUM. COR. STATION
CS50	ALUM. COR. STATION	ALUM. COR. STATION

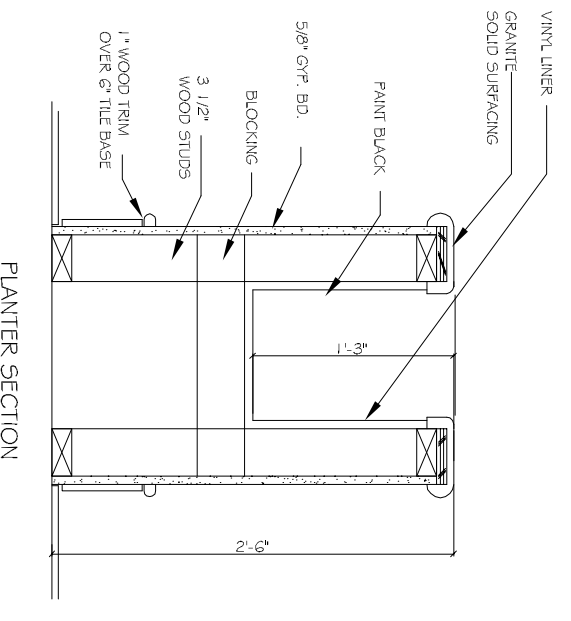


COVE LIGHT DETAIL
NOT TO SCALE

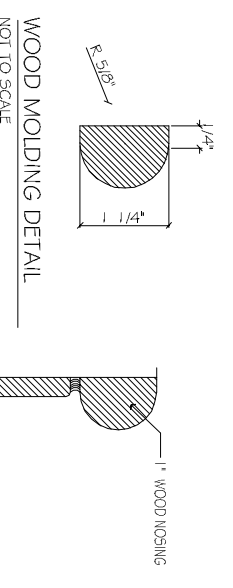
ROOM FINISH SCHEDULE

ROOM NAME	FLOOR	BASE	WALL	CEILING	DOORS / FRAMES	MILKWORK	REMARKS
STANDARD GUESTROOM	GF-1/CF-11/V-1	GF-2 / RB-1	PF-1 / PF-1	PF-3	PF-4		
ACCESSIBLE GUESTROOM	GF-1/V-1	GF-2 / RB-1	PF-1 / PF-1	PF-3	PF-4		
GUESTROOM BATH	V-1	RB-1	PF-5 / PF-6	PF-3	PF-4		
ENTR VESTIBULE	CF-10/WM-01	CFB-2	PF-10	PF-11	PF-17 / PF-14		
LLODGE CARIS	CF-10	CFB-2	PF-10	PF-11	PF-17 / PF-14		
LUGGAGE	CF-10	CFB-2	PF-10	PF-11	PF-17 / PF-14		
LOBBY	CF-10/CF-2/CF-19	CFB-2	PF-10	PF-11	PF-17 / PF-14		
REGISTRATION DESK	CF-10/CF-6/CF-6A	CFB-2	PF-10	PF-11	PF-17 / PF-14	ABS3 / ABS4	SEE DRAWINGS
WORKROOM	CF-6/CF-6A	CFB-4	PF-10	ACT-01	PF-17 / PF-15		
GENERAL MANAGER	CF-6/CF-6A	CFB-4	PF-10	ACT-01	PF-17 / PF-15		
SALTS OFFICE	CF-6/CF-6A	CFB-4	PF-10	ACT-01	PF-17 / PF-15		
TELEPHONE VIBRO	PF-1	WB-2	PF-10	ACT-01	PF-17 / PF-15		
BEAN ROOM	VC-1	WB-2	PF-10	ACT-01	PF-17 / PF-15		
LUCK	PF-1	WB-2	PF-10	PF-11	PF-17 / PF-15		
LAUNDRY	PF-1	WB-2	PF-10	PF-11	PF-17 / PF-15		
DIAPHONIC TOLIT	PF-1	WB-2	PF-10	PF-11	PF-17 / PF-15		
DEKORATOR SOUP	PF-1	WB-2	PF-10	PF-11	PF-17 / PF-15		
SUNDRY SHOP	CF-10	CFB-2	PF-10	PF-11	PF-17 / PF-14		
BUSINESS CENTER	CF-10	CFB-2	PF-10	PF-11	PF-17 / PF-14		
FITNESS ROOM	CF-6/CF-6A	CFB-4	PF-10	ACT-01	PF-17 / PF-15		
GUEST LAUNDRY - 4th BR.	CF-10	CFB-2	PF-10	PF-11	PF-17 / PF-15		
MCHANICAL ELECTRICAL	CF-10	WB-02	PF-10	PF-11	PF-17 / PF-15		
WATER RESERVOIR	CF-10	CFB-1	PF-10	PF-11	PF-17 / PF-15	SEE DRAWINGS	
WORKING RESTROOM	CF-10	CFB-1	PF-10	PF-11	PF-17 / PF-15	SEE DRAWINGS	
MEN'S ROOM	CF-7/CF-6	CFB-3	PF-10	PF-11	PF-17 / PF-17		
WOMEN'S ROOM	CF-6/CF-6A/CF-10	CFB-4/CFB-2	PF-10	PF-11	PF-17 / PF-15	SEE DRAWINGS	
PAINTY	CF-16	CFB-2	PF-10	ACT-01	PF-17 / PF-14		
JANITOR	CF-16	CFB-2	PF-10	PF-11	PF-17 / PF-15		
CORRIDOR	CF-2/CF-3/CF-4/CF-5	WB-02	PF-10	ACT-02	PF-17 / PF-14		
STORAGE	PF-1	WB-02	PF-10	ACT-02	PF-17 / PF-14		
STAIR #1 (LOBBY)	CF-1	CFB-1	PF-10	PF-11	PF-17 / PF-15		
STAIR #2 (LOBBY)	CF-1	CFB-1	PF-10	PF-11	PF-17 / PF-15		
2nd, 3rd & 4th FLOORS	CF-10	CFB-10	PF-10	PF-11	PF-17 / PF-15		
2nd, 3rd & 4th FLOORS	PF-1	WB-02	PF-10	PF-11	PF-17 / PF-15		
2nd, 3rd & 4th FLOORS	CF-2/CF-3/CF-4/CF-5	CFB-2	PF-10	PF-11	PF-17 / PF-15		
ELEVATOR CABS	VF-1				TF-15		

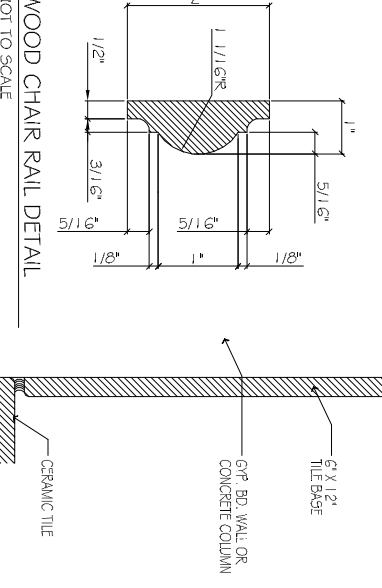
THE SYMBOL "*" INDICATES ROOMS TO RECEIVE ROOM IDENTIFICATION SIGNAGE OUTSIDE EACH DOOR TO ROOM.
ROOM MOUNT SIGN @ 60" A.F.F. AND 6" FROM OUTSIDE EDGE OF DOOR FRAME.



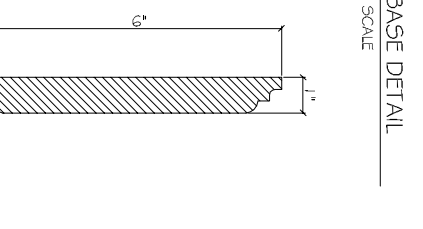
PLANTER SECTION
NOT TO SCALE



WOOD MOLDING DETAIL
NOT TO SCALE

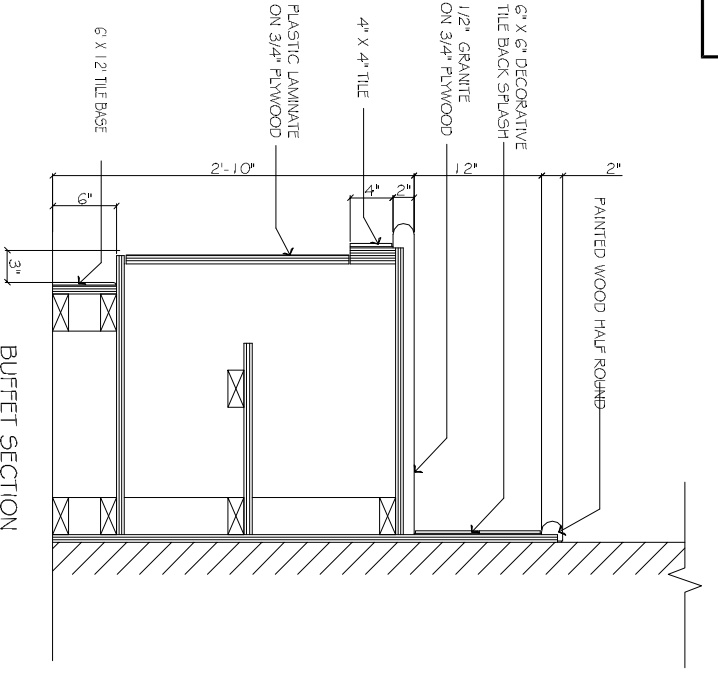


WOOD CHAIR RAIL DETAIL
NOT TO SCALE



TILE BASE DETAIL
NOT TO SCALE

WOOD BASE DETAIL
NOT TO SCALE



BUFFET SECTION
NOT TO SCALE

PRELIMINARY (NOT FOR CONSTRUCTION)

LAQUINTA INNS & SUITES
HATTIESBURG, MESSICOTT

2158
JTL

12-10-2012

DAMMON ENGINEERING INC.

CHIEF ENGINEER: EVANETT DAMMON, P.E.
554 OLD SPANISH TRAIL
SUDELL, LA 70450

dammoneng@earthlink.net
dammoneng@bellsouth.net
PHONE: 905-649-5032
FAX: 905-641-5950

REVISIONS

#	DESCRIPTION	DATE

SHEET No: **A13**

FINISH SCHEDULE