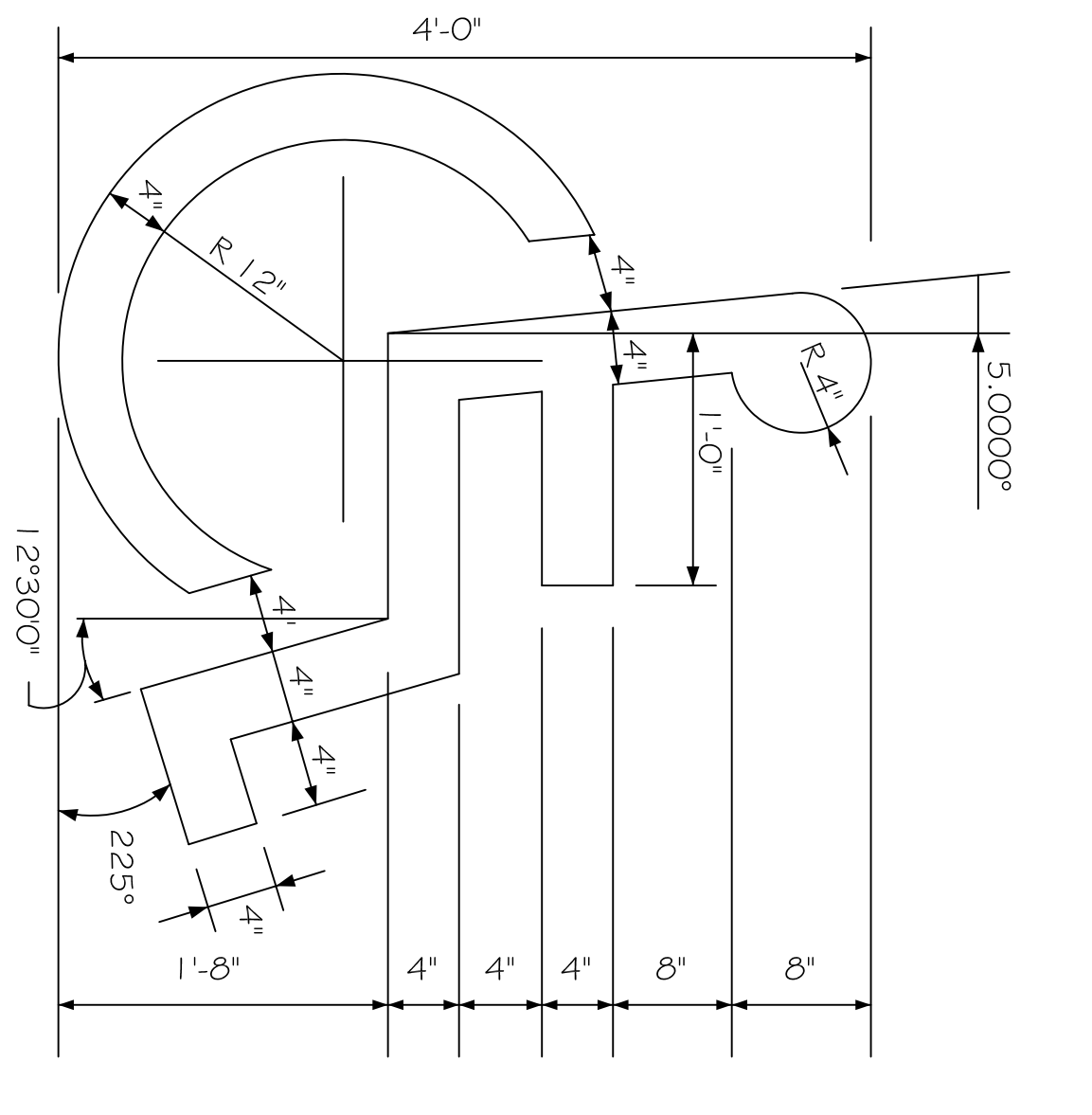
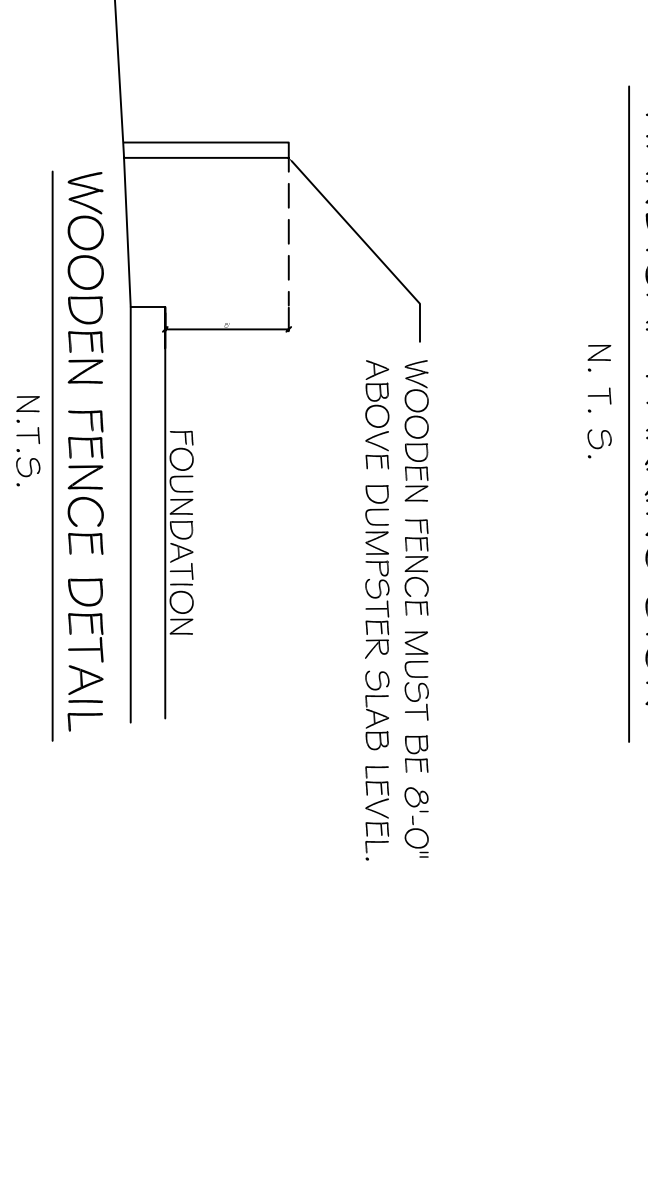
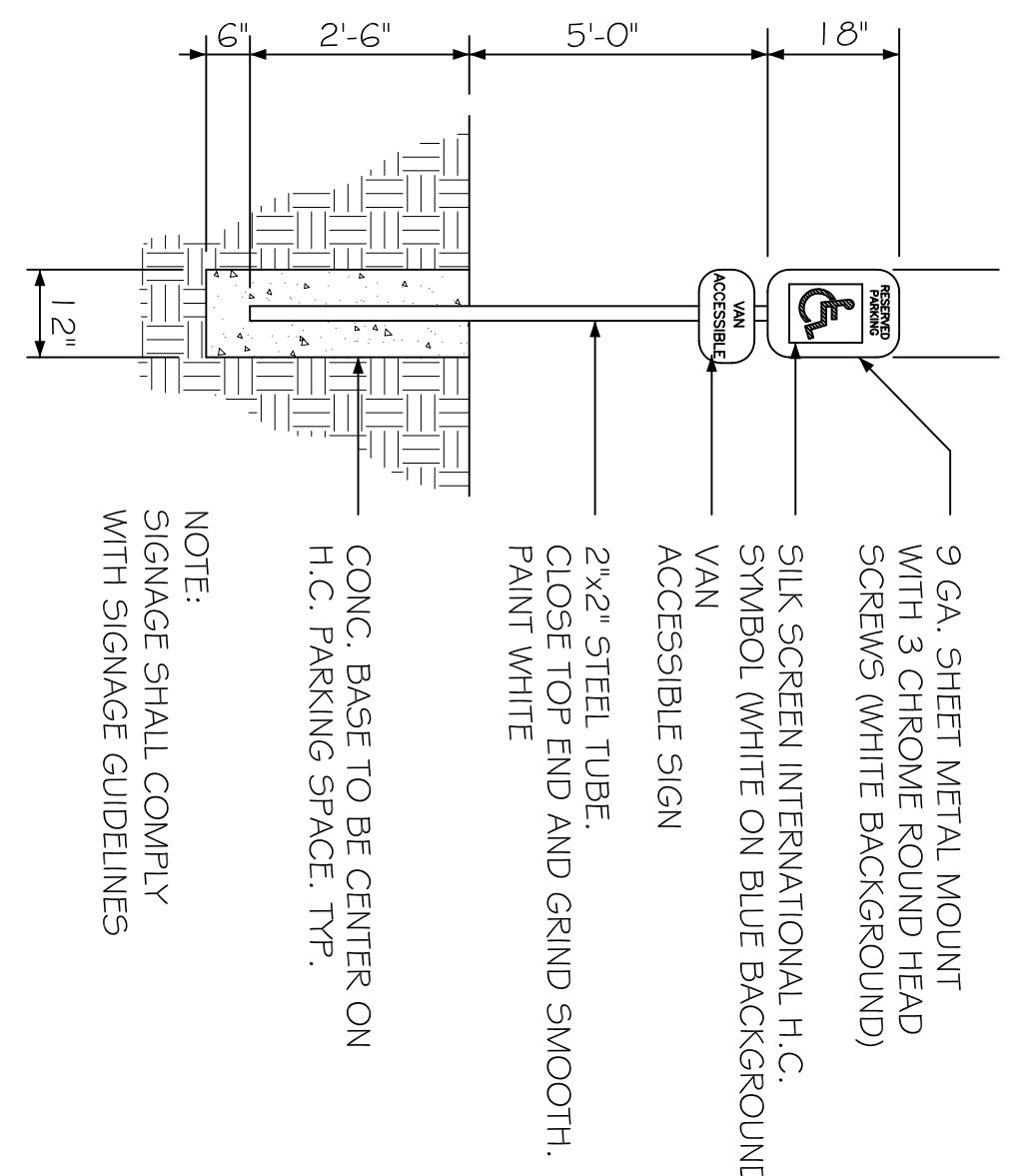
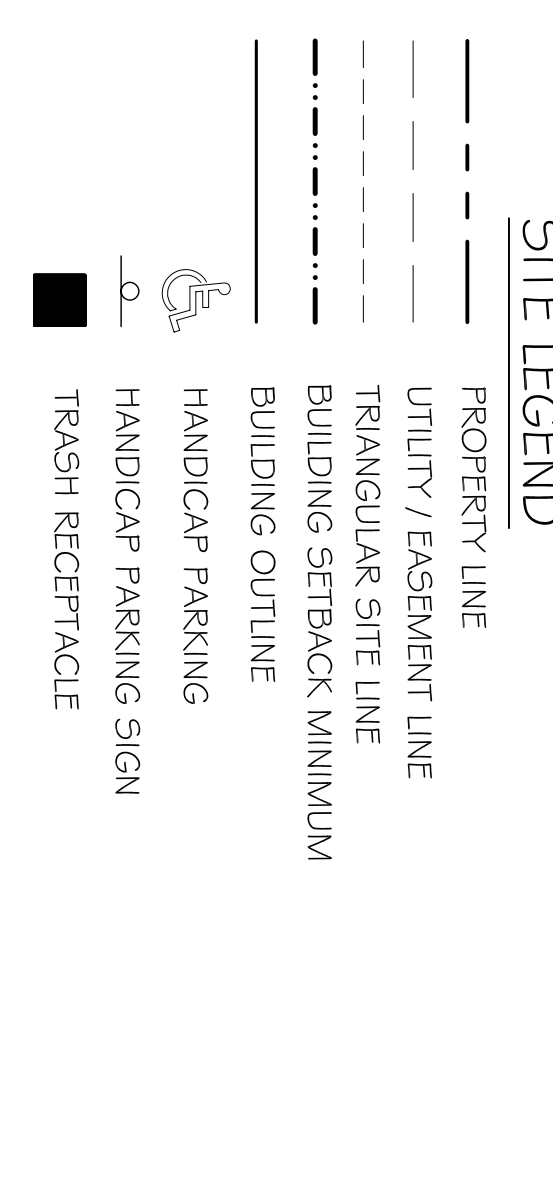


PARKING REQUIREMENTS:
 1 SPACE PER GUESTROOM REQUIRED,
 63 GUESTROOMS x 1 = 63 SPACES
 TOTAL SPACES NEEDED, 94 PROVIDED.

- ALL SIDEWALKS INTERSECTING A ROADWAY SHALL BE SLOPED @ 1:12 AND HAVE A DETECTABLE WARNING SYSTEM (CAST IN PLACE)



SITE PLAN
 SCALE: 1"=20'-0"

PRELIMINARY (NOT FOR CONSTRUCTION)

LAQUINTA INNS & SUITES

WEST MONROE, LOUISIANA
 JOB No: 2196 DATE: 12-12-2013
 DRAWN BY: JTL CHECKED BY: CKD



DAMMON ENGINEERING, INC.
 Architects & Engineers

CHIEF ENGINEER, BRIAN MISTICH, P.E.
 CHIEF ARCHITECT, KEVIN KINCHEN
 554 OLD SPANISH TRAIL
 SLIDELL, LA 70458

dammoneengineering.com
 dammoneng@bellsouth.net
 PHONE: 985-649-5832
 FAX: 985-641-5990

REVISIONS		
#	DESCRIPTION	DATE

SHEET No: 00 OF 00
C1

SITE PLAN