



Conversion Standard Details Manual

February 2009



TABLE of CONTENTS

- Standard King Guestroom Plan**
- Standard Double Double Guestroom Plan**
- Standard Double Queen Guestroom Plan**
- Extended King Suite Guestroom Plan**
- Extended King Suite Guestroom TV Arch Elevation**
- Two Room Suite Guestroom Plan**
- Two Room Suite Guestroom Wet Bar Elevation**
- Two Room Suite Guestroom Wet Bar Section**
- Standard Accessible King Guestroom Plan**
- Standard Accessible Double Double Guestroom Plan**
- Standard Accessible Double Queen Guestroom Plan**
- Bathroom Corner Cabinet Plan, Elevation & Section**
- Bathroom Flooring Details**
- Breakfast Area Buffet Elevation & Section**
- Breakfast Cart Plan and Front Elevation**
- Breakfast Cart Rear and Side Elevations**
- Breakfast Cart Notes and Specifications**
- Registration Front Desk Plan and Elevations**
- Registration Front Desk Notes**
- Registration Front Desk Sections 1 and 2**



TABLE of CONTENTS (Continued)

Registration Front Desk Sections 3 and 4

Registration Front Desk Sections 5 and 6

Registration Front Desk Details

Wood Base and Chair Rail Details

Typical Door Types

Panel Door

Traditional Tower Plans

Traditional Tower Elevation

Traditional Tower Section

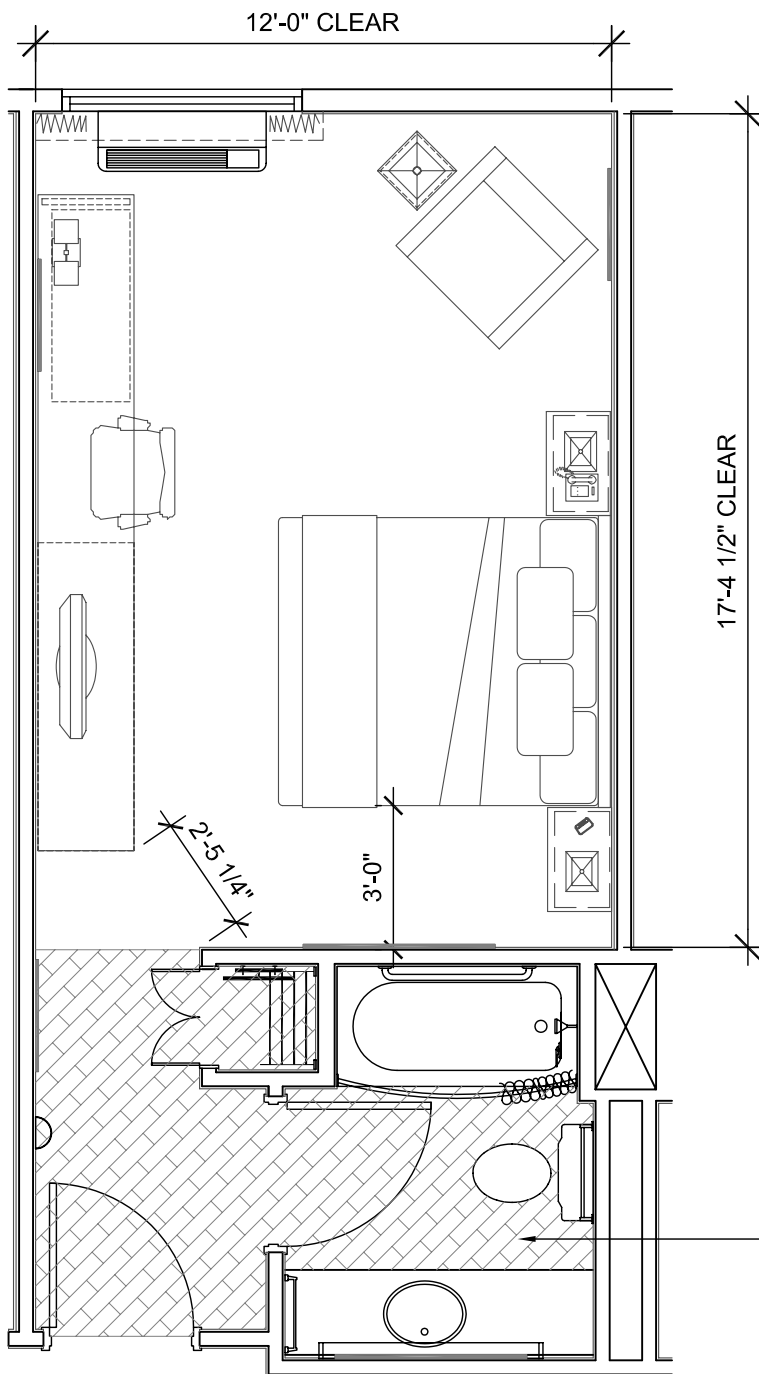
Traditional Tower Trim Detail

Urban Tower Plans

Urban Tower Elevation

Urban Tower Section

Urban Tower Details



FURNITURE & ACCESSORIES

LEGEND

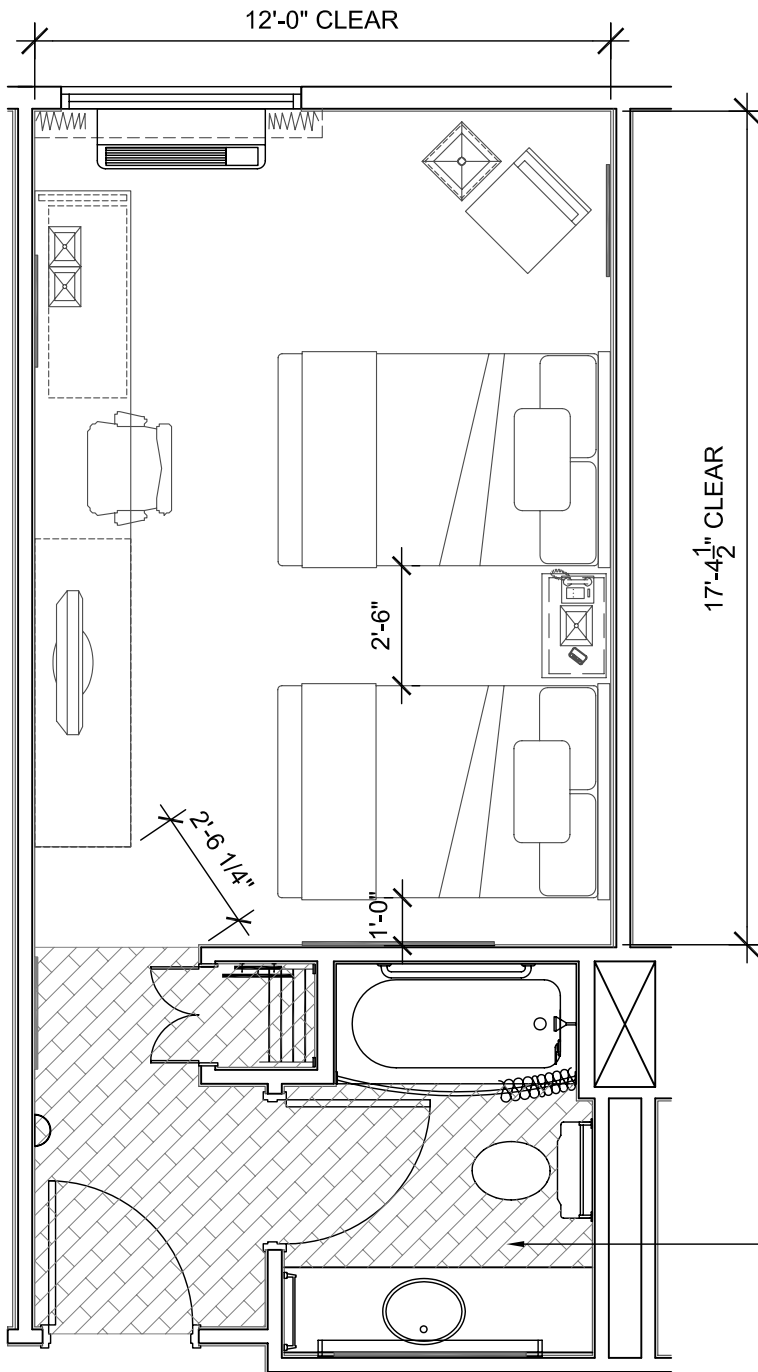
- KING BED WITH HEADBOARDS AND BOX STAND
- 2 NIGHT STANDS
- MICROWAVE / MINI REFRIGERATOR
- LOUNGE CHAIR
- DRESSER
- DESK
- 32" FLAT SCREEN PLASMA OR LCD TV
- TASK CHAIR
- 2 BEDSIDE LAMPS
- FLOOR LAMP
- DESK LAMP
- WINDOW DRAPERIES, SHEERS AND VALANCE
- ARTWORK
- CLOSET ACCESSORIES INCLUDING LUGGAGE RACK, IRON, IRONING BOARD w/ HOOK, CLOSET ROD & SHELF
- BEDSIDE TELEPHONE
- CLOCK RADIO
- FULL LENGTH MIRROR

NOTE A:
 VINYL WOOD FLOORING TO BE INSTALLED AT 45° FROM THE ROOM AXIS. DETERMINE STARTING POINT FOR EACH ROW SO AS TO MAINTAIN A MINIMUM 12" LONG PIECE AT EDGES.

OCTOBER 2008



STANDARD KING GUESTROOM



FURNITURE & ACCESSORIES

LEGEND

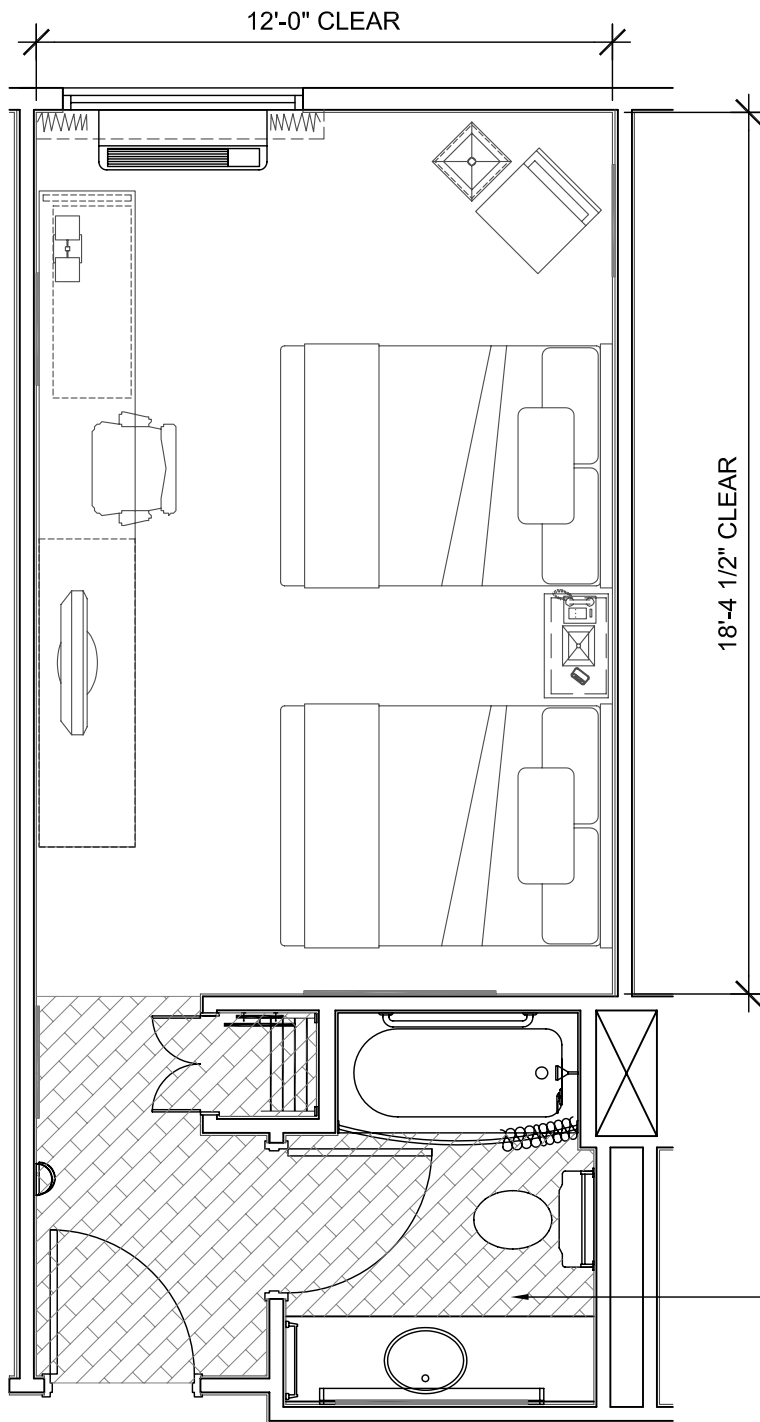
- 2 DOUBLE BEDS WITH HEADBOARDS AND BOX STAND
- NIGHT STAND
- MICROWAVE / MINI REFRIGERATOR
- SIDE CHAIR
- DRESSER WITH PULL OUT DESK
- 32" FLAT SCREEN PLASMA OR LCD TV
- TASK CHAIR
- BEDSIDE LAMP
- FLOOR LAMP
- DESK LAMP
- WINDOW DRAPERIES, SHEERS AND VALANCE
- ARTWORK
- CLOSET ACCESSORIES INCLUDING LUGGAGE RACK, IRON, IRONING BOARD w/ HOOK, CLOSET ROD & SHELF
- BEDSIDE TELEPHONE
- CLOCK RADIO
- FULL LENGTH MIRROR

NOTE A:
VINYL WOOD FLOORING TO BE INSTALLED AT 45° FROM THE ROOM AXIS. DETERMINE STARTING POINT FOR EACH ROW SO AS TO MAINTAIN A MINIMUM 12" LONG PIECE AT EDGES.

OCTOBER 2008



STANDARD DOUBLE GUESTROOM



FURNITURE & ACCESSORIES LEGEND

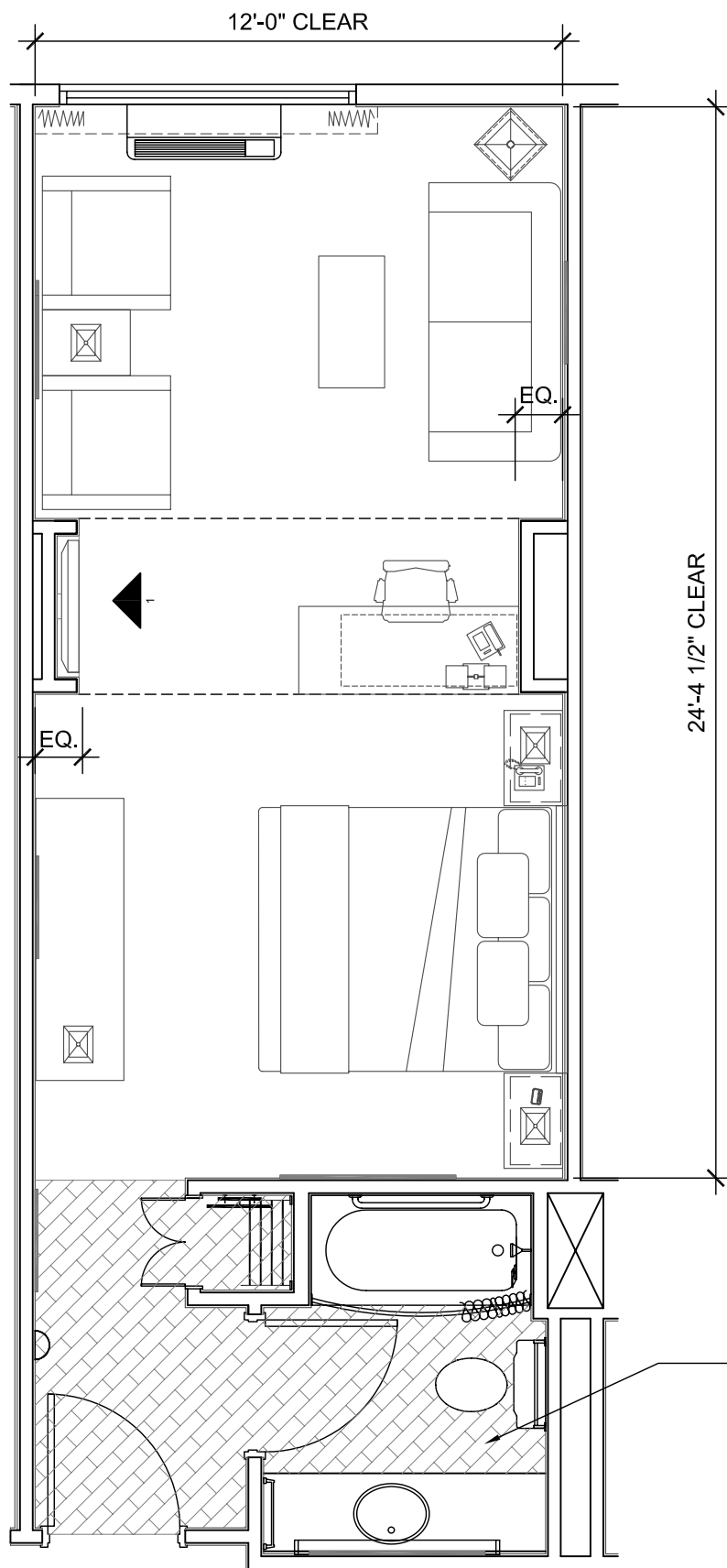
- 2 QUEEN BEDS WITH HEADBOARDS AND BOX STAND
- NIGHT STAND
- MICROWAVE / MINI REFRIGERATOR
- SIDE CHAIR
- DRESSER WITH PULL OUT DESK
- 32" FLAT SCREEN PLASMA OR LCD TV
- TASK CHAIR
- BEDSIDE LAMP
- FLOOR LAMP
- DESK LAMP
- WINDOW DRAPERIES, SHEERS AND VALANCE
- ARTWORK
- CLOSET ACCESSORIES INCLUDING LUGGAGE RACK, IRON, IRONING BOARD w/ HOOK, CLOSET ROD & SHELF
- BEDSIDE TELEPHONE
- CLOCK RADIO
- FULL LENGTH MIRROR

NOTE A:
VINYL WOOD FLOORING TO BE INSTALLED AT 45° FROM THE ROOM AXIS. DETERMINE STARTING POINT FOR EACH ROW SO AS TO MAINTAIN A MINIMUM 12" LONG PIECE AT EDGES.

OCTOBER 2008



DOUBLE QUEEN GUESTROOM



FURNITURE & ACCESSORIES LEGEND

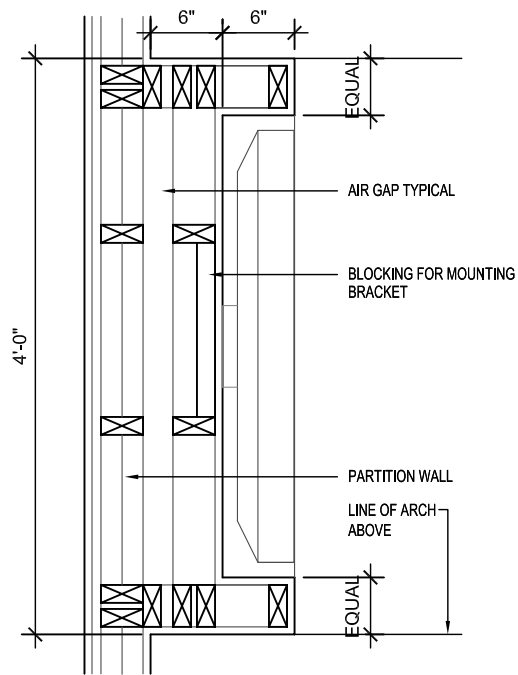
- SLEEPER SOFA
- 2 LOUNGE CHAIRS
- LAMP TABLE
- END TABLE
- COFFEE TABLE
- KING BED WITH HEADBOARD AND BOX STAND
- 2 NIGHT STANDS
- MICROWAVE / MINI REFRIGERATOR
- DRESSER
- DESK WITH PULL OUT DESK
- 32" FLAT SCREEN PLASMA OR LCD TV LOCATED IN PILASTER NICHE w/ ADJUSTABLE WALL BRACKET
- TASK CHAIR
- BEDSIDE LAMP
- FLOOR LAMP
- DESK LAMP
- WINDOW DRAPERIES, SHEERS AND VALANCE
- ARTWORK
- CLOSET ACCESSORIES INCLUDING LUGGAGE RACK, IRON, IRONING BOARD w/ HOOK, CLOSET ROD & SHELF
- DESK TELEPHONE
- BEDSIDE TELEPHONE
- CLOCK RADIO
- FULL LENGTH MIRROR

NOTE A:
VINYL WOOD FLOORING TO BE INSTALLED AT 45° FROM THE ROOM AXIS. DETERMINE STARTING POINT FOR EACH ROW SO AS TO MAINTAIN A MINIMUM 12" LONG PIECE AT EDGES.

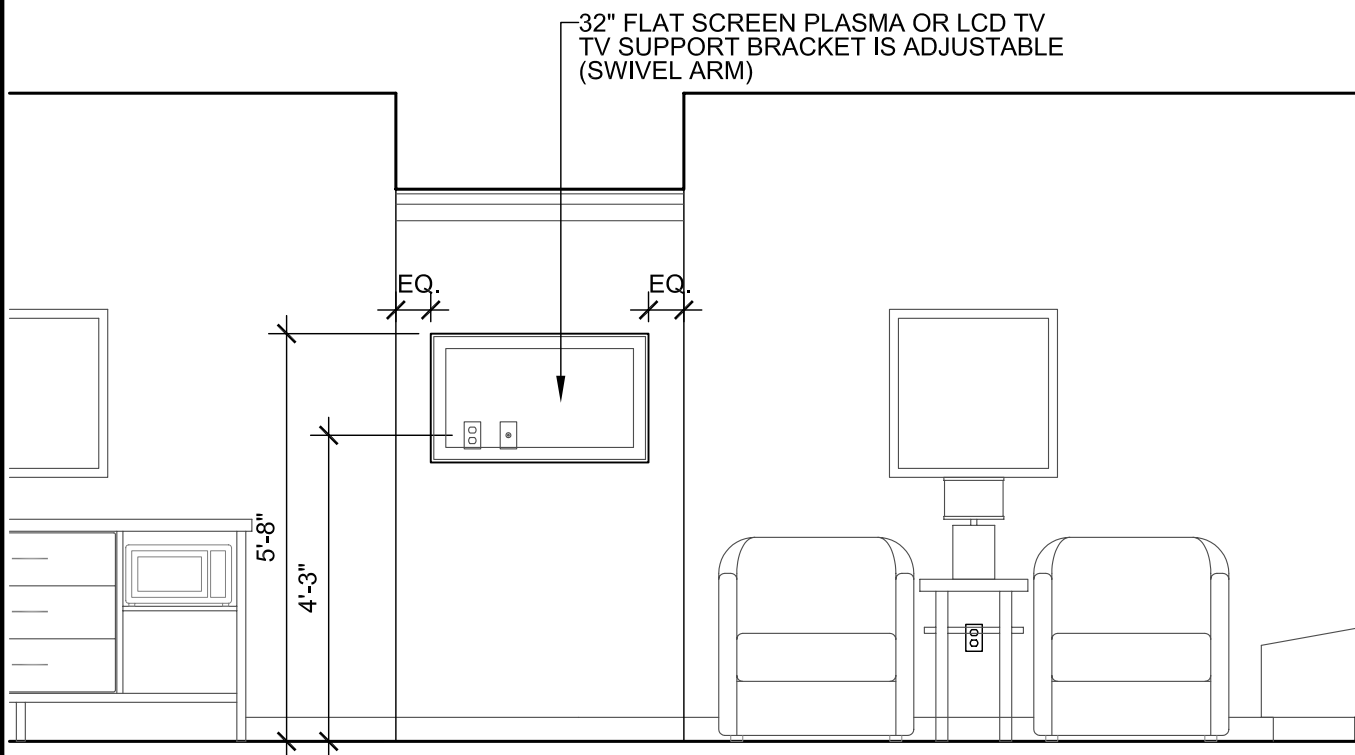
OCTOBER 2008



EXTENDED KING SUITE GUESTROOM



2 TELEVISION NICHE PLAN DETAIL



1 TELEVISION NICHE ELEVATION

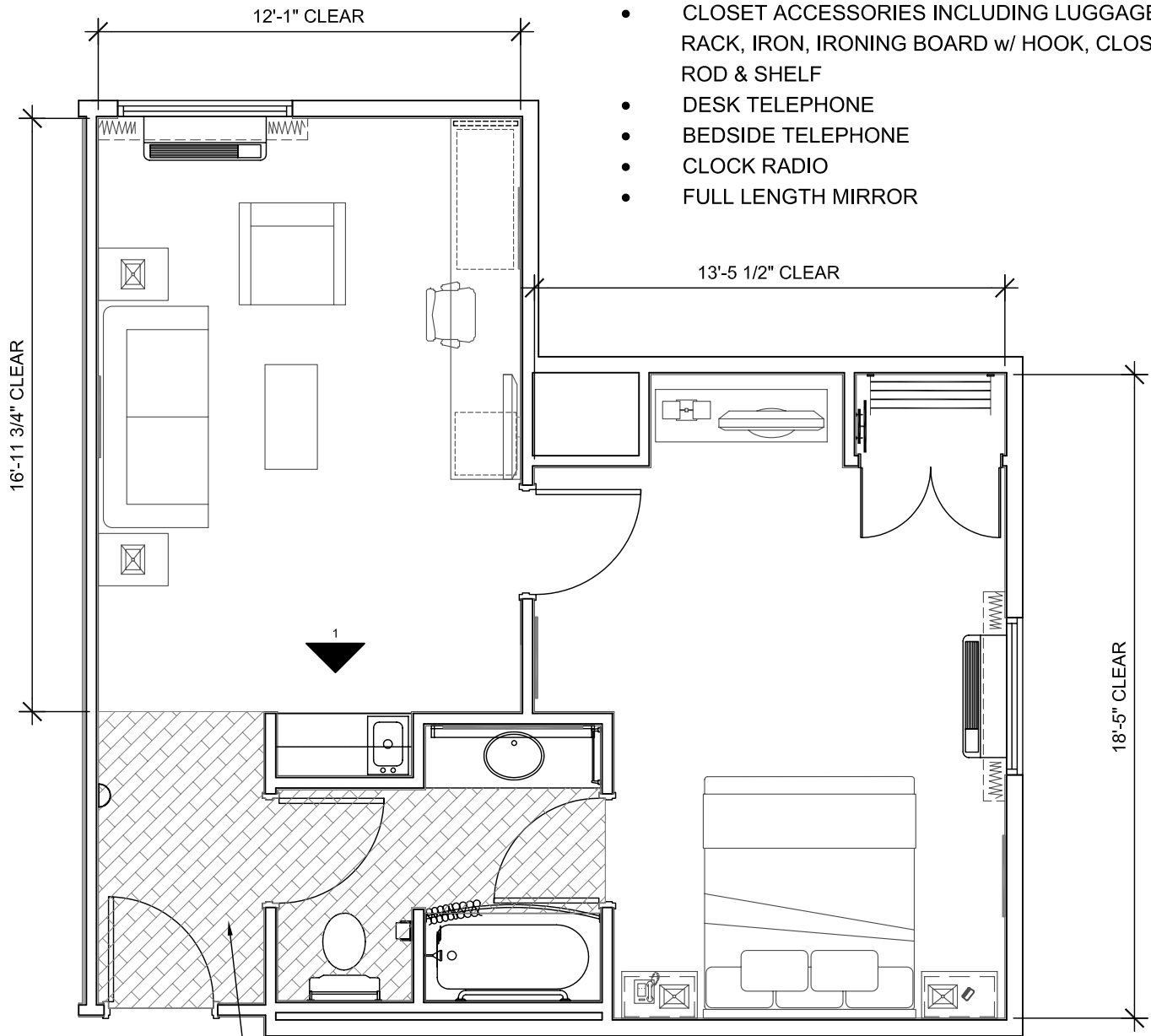


OCTOBER 2008

EXTENDED KING SUITE GUESTROOM

FURNITURE & ACCESSORIES LEGEND

- SLEEPER SOFA
- LOUNGE CHAIR
- 2 END TABLES
- COFFEE TABLE
- KING BED WITH HEADBOARD AND BOX STAND
- 2 NIGHT STANDS
- MICROWAVE / MINI REFRIGERATOR IN BUILT-IN WET BOX
- DRESSER
- DESK WITH PULL OUT DESK
- 32" FLAT SCREEN PLASMA OR LCD TV
- TASK CHAIR
- 2 BEDSIDE LAMPS
- DESK LAMP
- 2 SETS WINDOW DRAPERIES, SHEERS AND VALANCE
- ARTWORK
- CLOSET ACCESSORIES INCLUDING LUGGAGE RACK, IRON, IRONING BOARD w/ HOOK, CLOSET ROD & SHELF
- DESK TELEPHONE
- BEDSIDE TELEPHONE
- CLOCK RADIO
- FULL LENGTH MIRROR

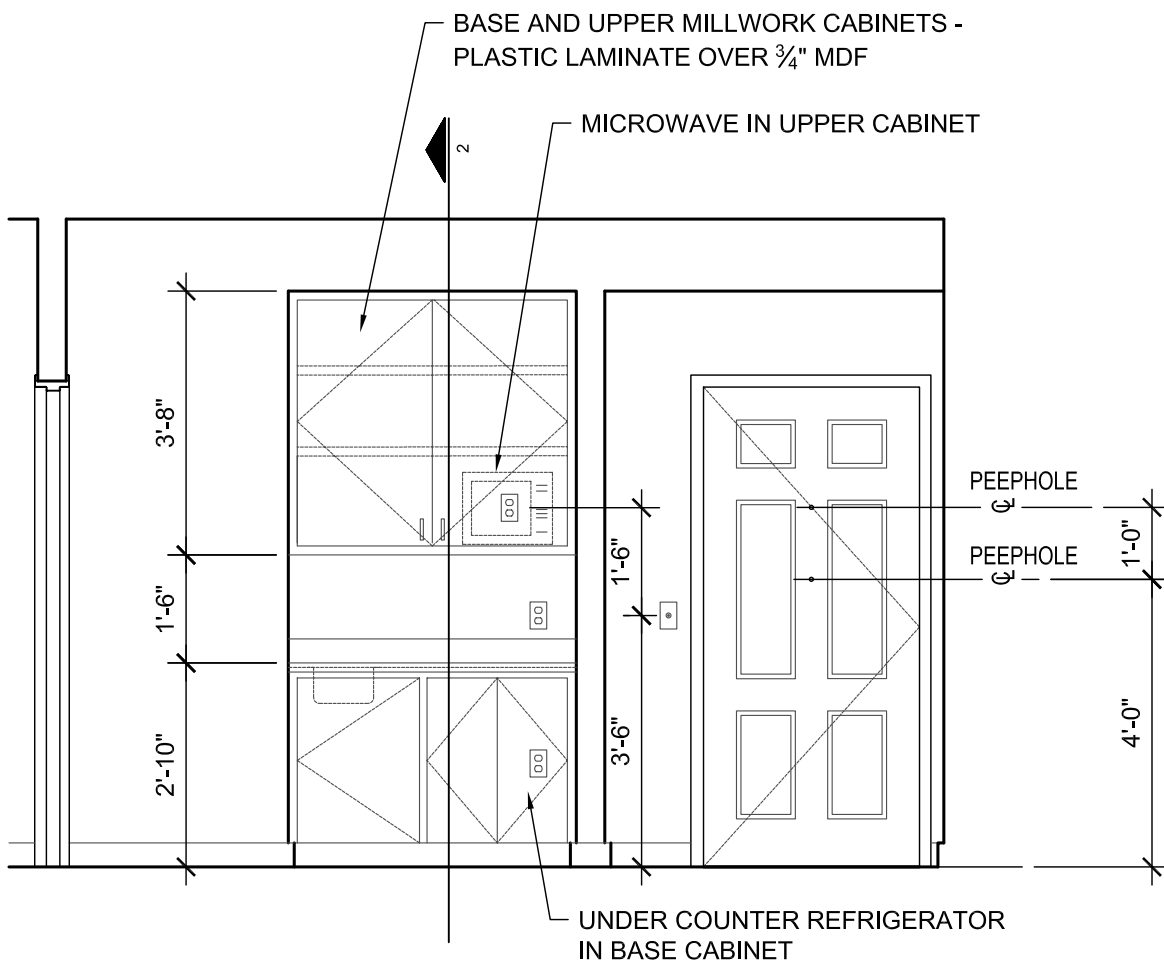


NOTE A:
VINYL WOOD FLOORING TO BE INSTALLED AT 45° FROM THE ROOM AXIS. DETERMINE STARTING POINT FOR EACH ROW SO AS TO MAINTAIN A MINIMUM 12" LONG PIECE AT EDGES.



OCTOBER 2008

2-ROOM SUITE GUESTROOM

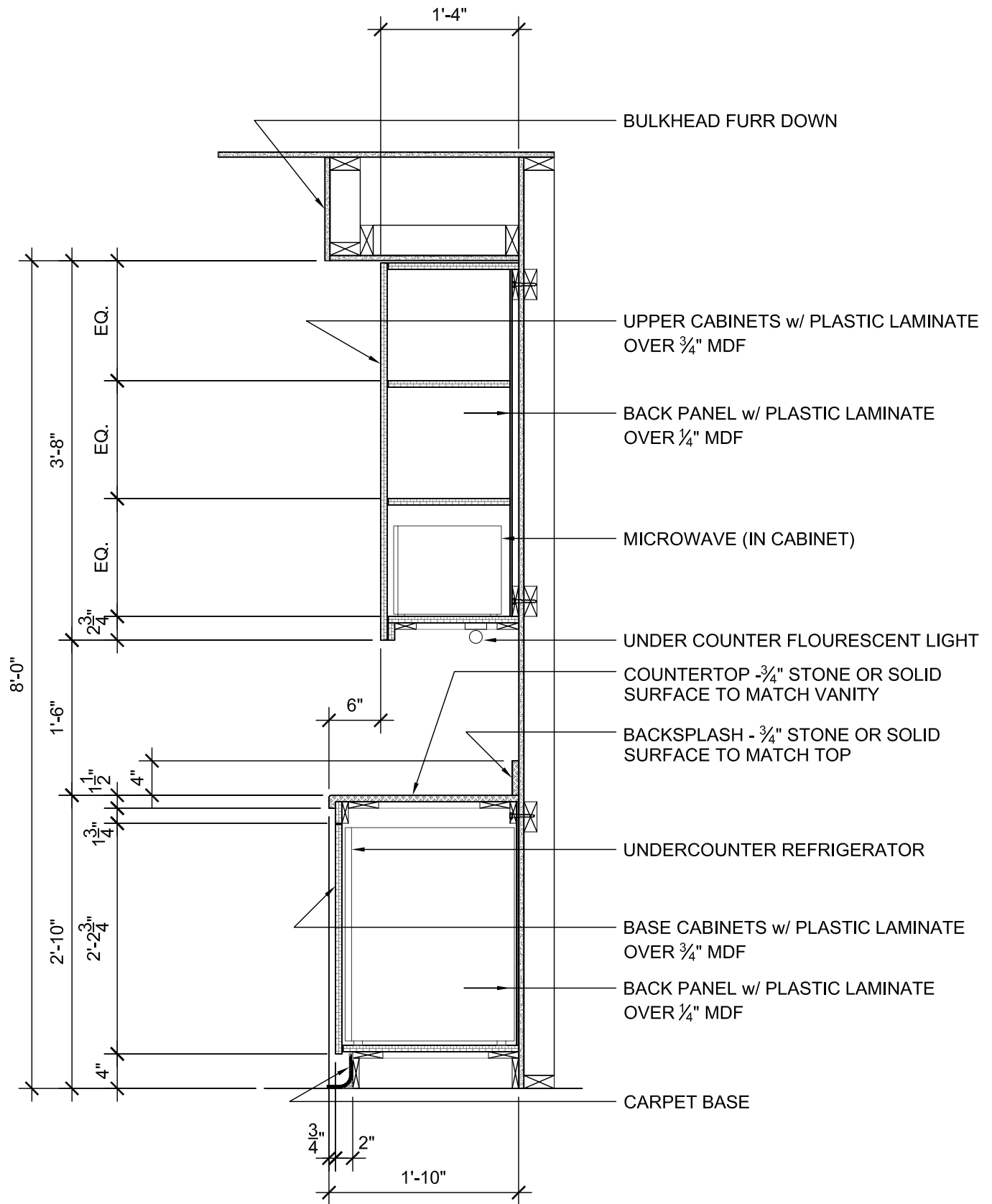


1 WET BAR ELEVATION

OCTOBER 2008



2-ROOM SUITE GUESTROOM

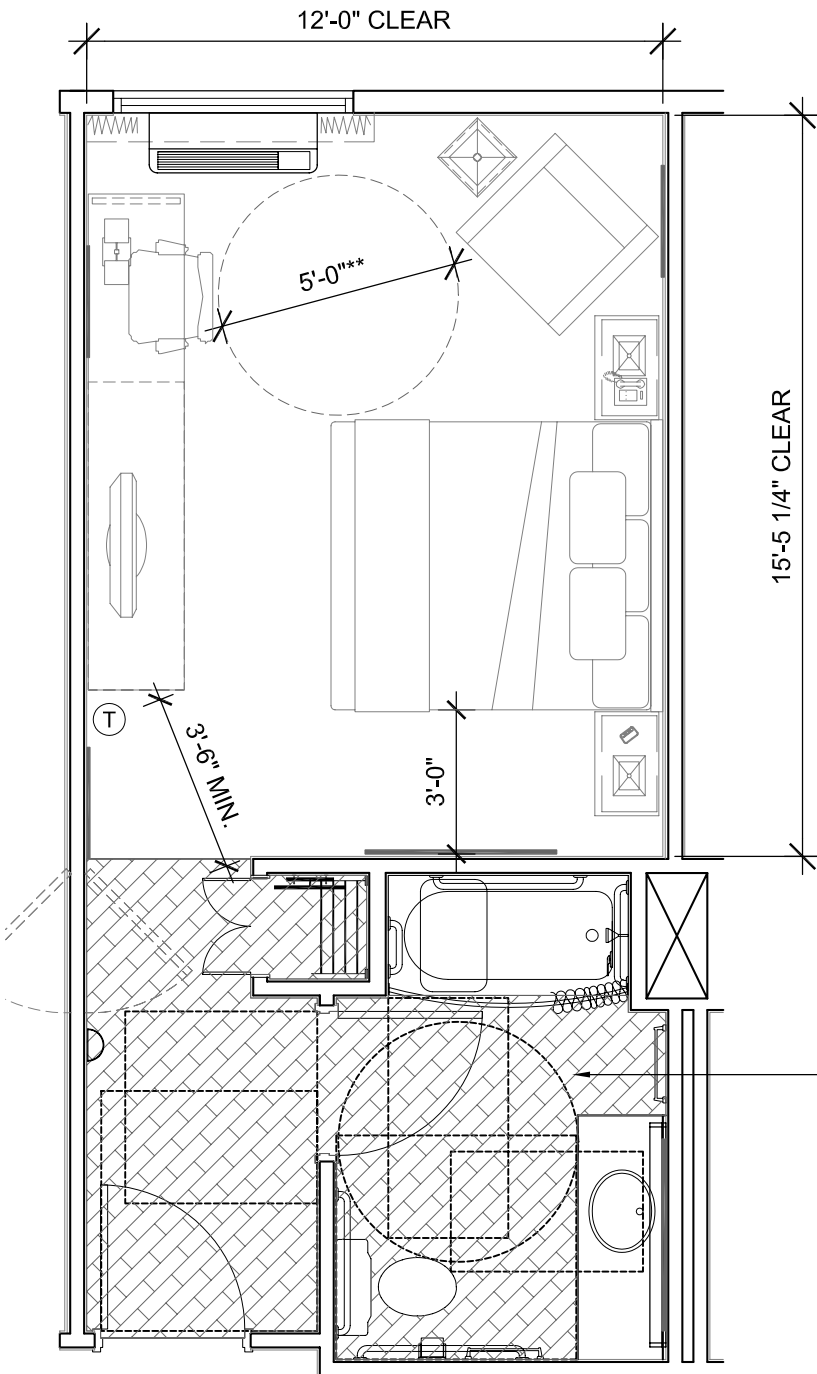


2 WET BAR SECTION



OCTOBER 2008

2-ROOM SUITE GUESTROOM



FURNITURE & ACCESSORIES LEGEND

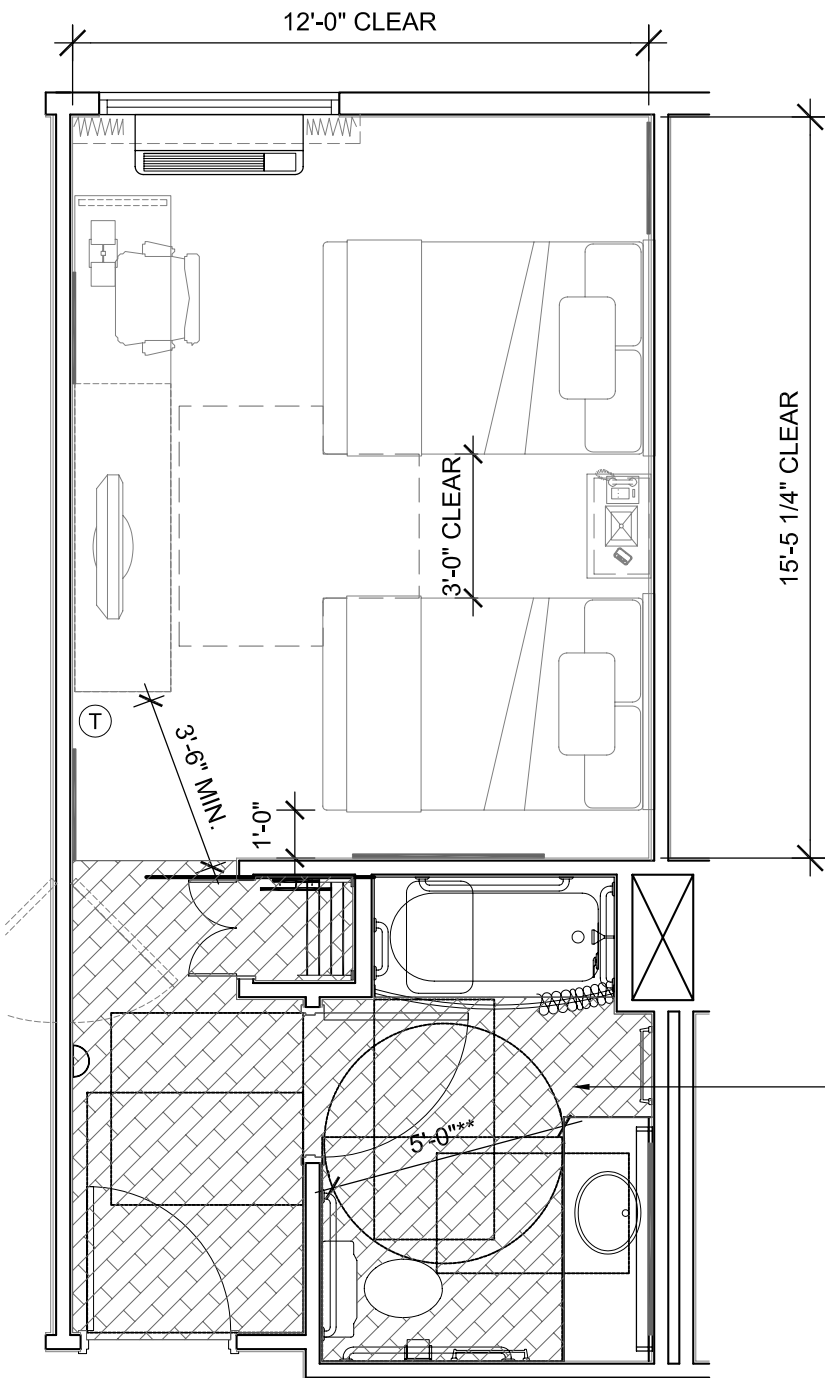
- KING BED WITH HEADBOARD AND BOX STAND
- 2 NIGHT STANDS
- MICROWAVE / MINI REFRIGERATOR
- LOUNGE CHAIR
- DRESSER
- DESK
- 32" FLAT SCREEN PLASMA OR LCD TV
- TASK CHAIR
- 2 BEDSIDE LAMPS
- FLOOR LAMP
- DESK LAMP
- WINDOW DRAPERIES, SHEERS AND VALANCE
- ARTWORK
- CLOSET ACCESSORIES INCLUDING LUGGAGE RACK, IRON, IRONING BOARD w/ HOOK, CLOSET ROD & SHELF
- BEDSIDE TELEPHONE
- CLOCK RADIO
- FULL LENGTH MIRROR

NOTE A:
VINYL WOOD FLOORING TO BE INSTALLED AT 45° FROM THE ROOM AXIS. DETERMINE STARTING POINT FOR EACH ROW SO AS TO MAINTAIN A MINIMUM 12" LONG PIECE AT EDGES.

OCTOBER 2008



STANDARD ACC. KING GUESTROOM



FURNITURE & ACCESSORIES LEGEND

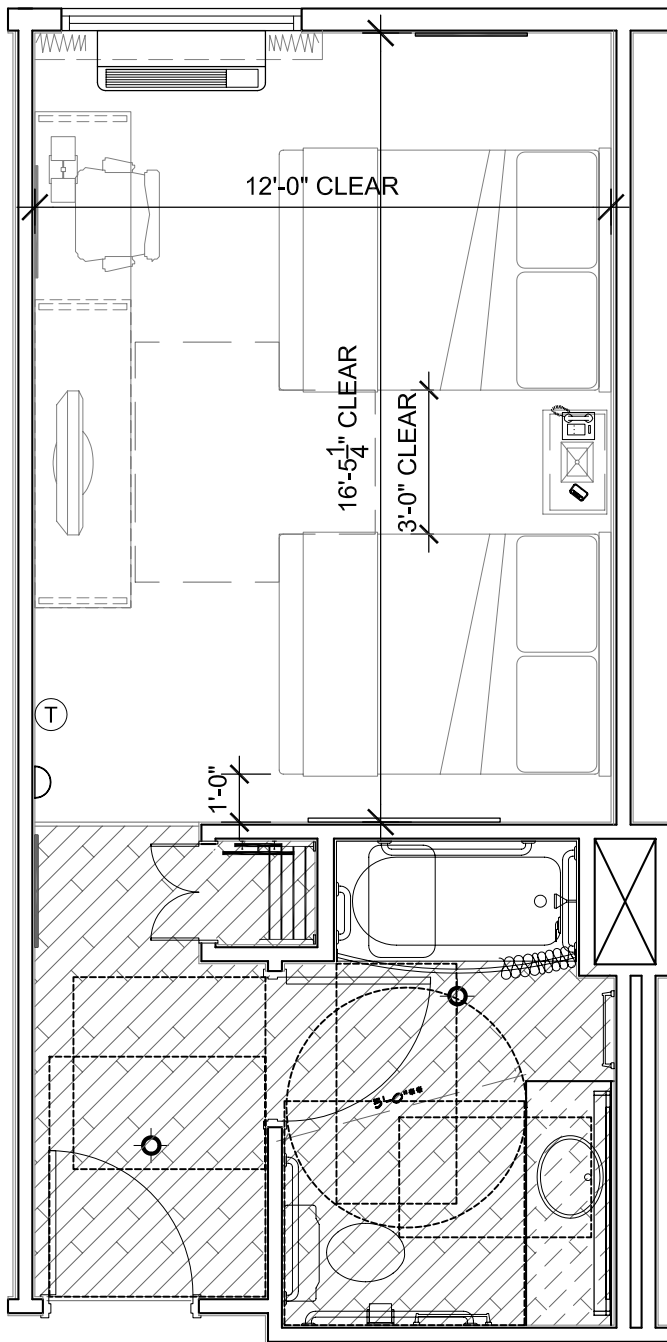
- 2 DOUBLE BEDS WITH HEADBOARDS AND BOX STAND
- NIGHT STAND
- MICROWAVE / MINI REFRIGERATOR
- DRESSER WITH PULL OUT DESK
- 32" FLAT SCREEN PLASMA OR LCD TV
- TASK CHAIR
- BEDSIDE LAMP
- FLOOR LAMP
- DESK LAMP
- WINDOW DRAPERIES, SHEERS AND VALANCE
- ARTWORK
- CLOSET ACCESSORIES INCLUDING LUGGAGE RACK, IRON, IRONING BOARD w/ HOOK, CLOSET ROD & SHELF
- BEDSIDE TELEPHONE
- CLOCK RADIO
- FULL LENGTH MIRROR

NOTE A:
VINYL WOOD FLOORING TO BE INSTALLED AT 45° FROM THE ROOM AXIS. DETERMINE STARTING POINT FOR EACH ROW SO AS TO MAINTAIN A MINIMUM 12" LONG PIECE AT EDGES.

OCTOBER 2008



STANDARD ACC. DOUBLE GUESTROOM



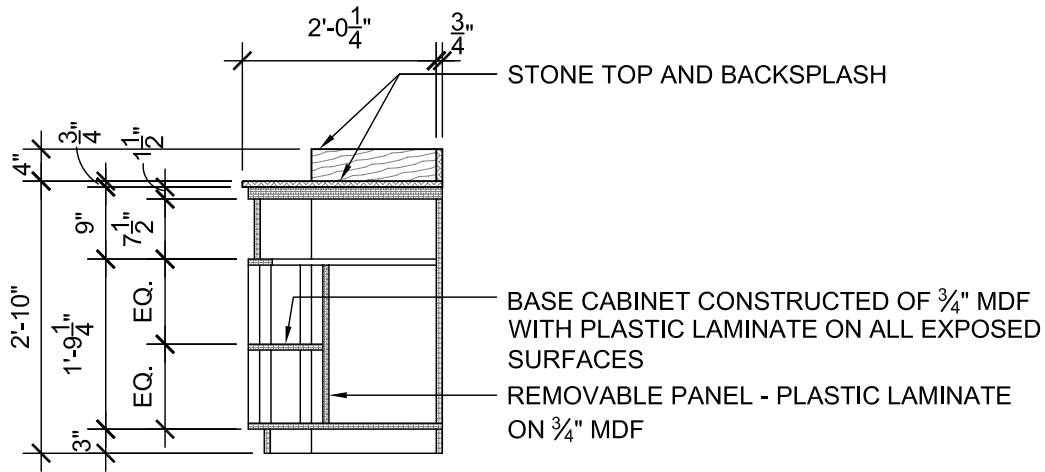
FURNITURE & ACCESSORIES LEGEND

- 2 DOUBLE BEDS WITH HEADBOARDS AND BOX STAND
- NIGHT STAND
- MICROWAVE / MINI REFRIGERATOR
- DRESSER WITH PULL OUT DESK
- 32" FLAT PANEL TV
- TASK CHAIR
- BEDSIDE LAMP
- DESK LAMP
- WINDOW DRAPERIES, SHEERS AND VALANCE
- ARTWORK
- CLOSET ACCESSORIES INCLUDING LUGGAGE RACK, IRON, IRONING BOARD w/ HOOK, CLOSET ROD
- BEDSIDE TELEPHONE
- CLOCK RADIO

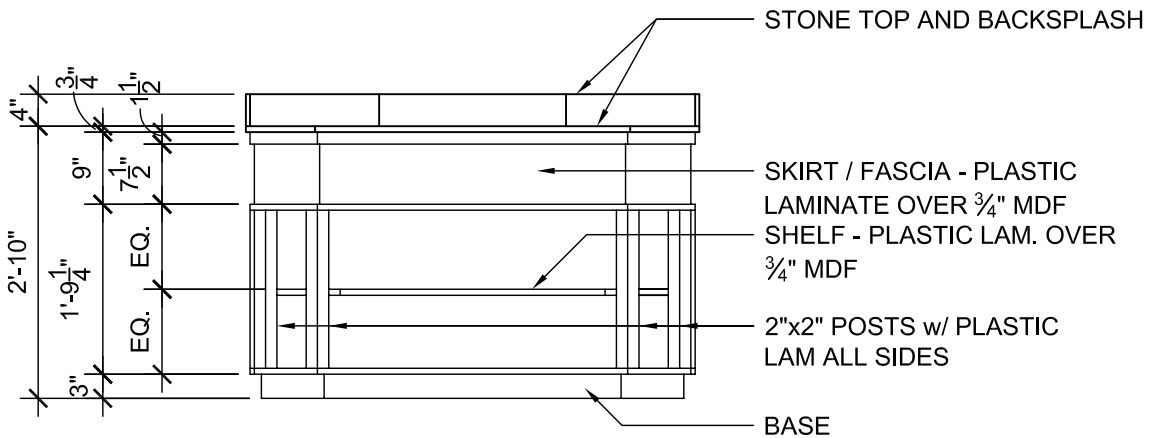
OCTOBER 2008



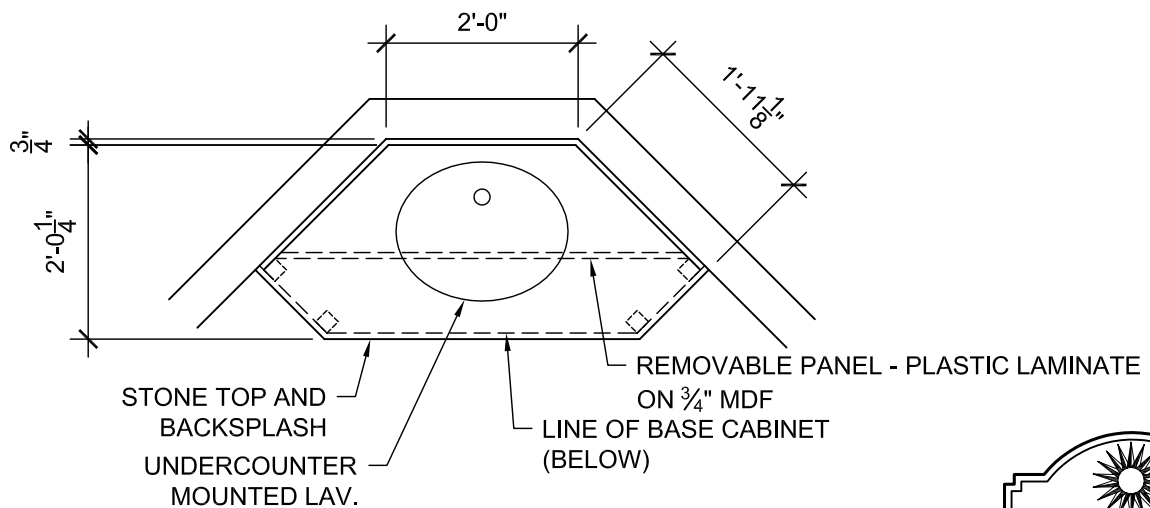
ACC. QUEEN GUESTROOM



3 VANITY SECTION



2 VANITY FRONT ELEVATION

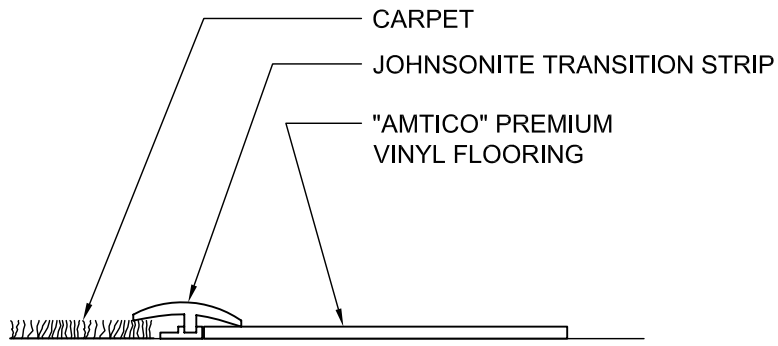


1 VANITY PLAN

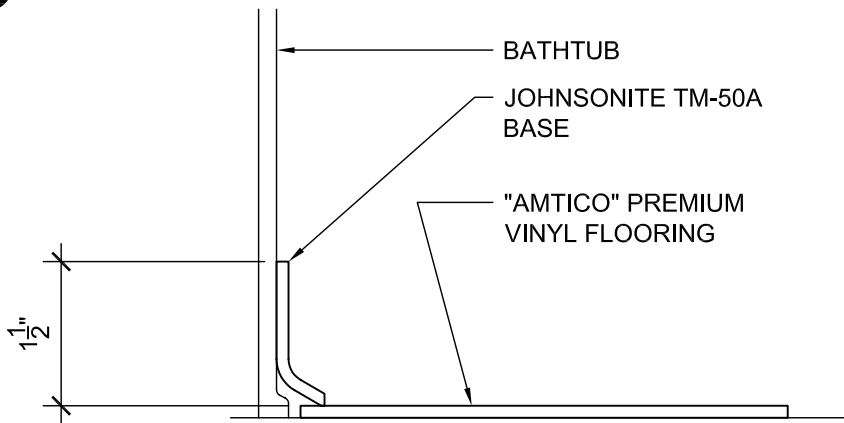
OCTOBER 2008



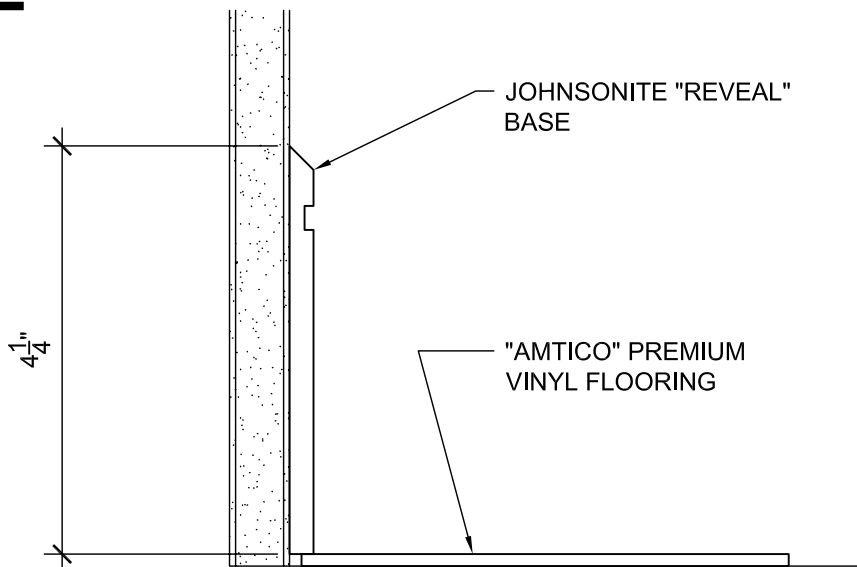
CORNER CABINET



3 CARPET TO VINYL FLOOR TRANSITION DETAIL



2 BASE DETAIL @ BATHTUB

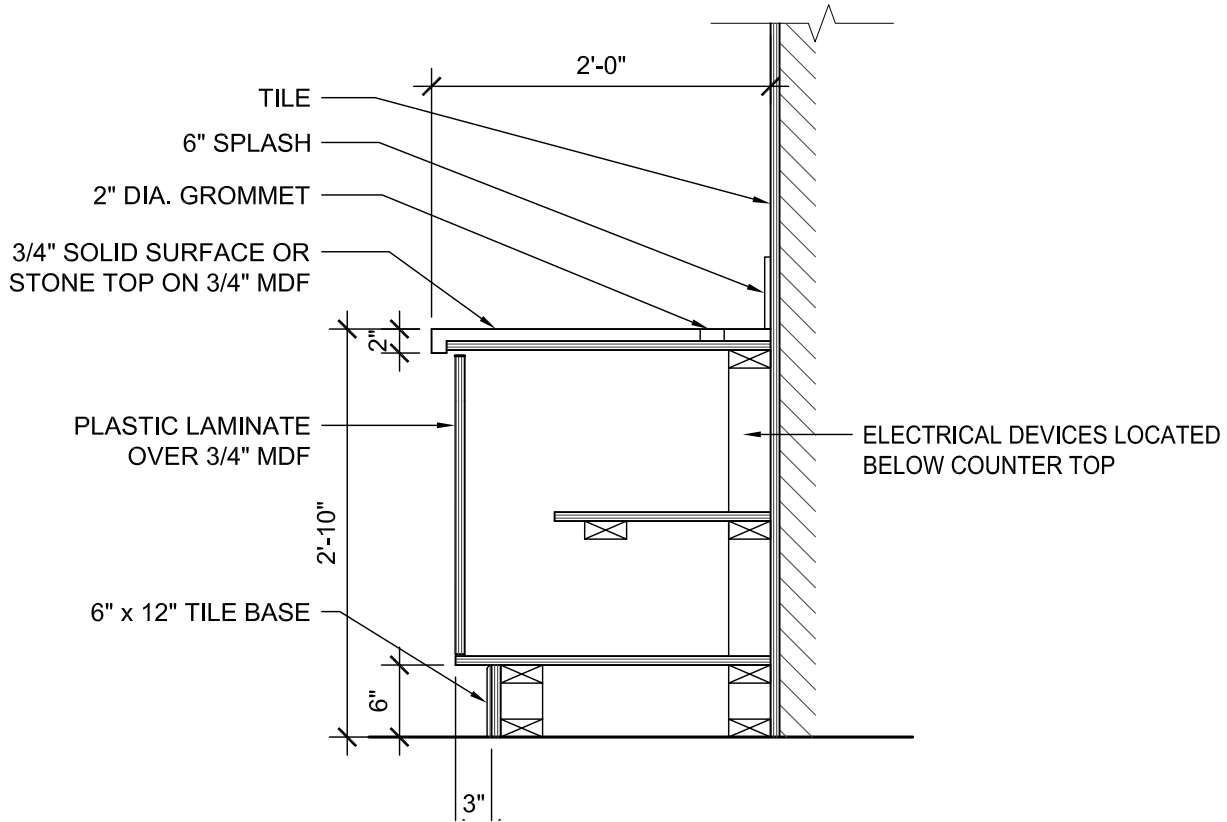


1 DECORATIVE BASE @ GUEST BATHROOM

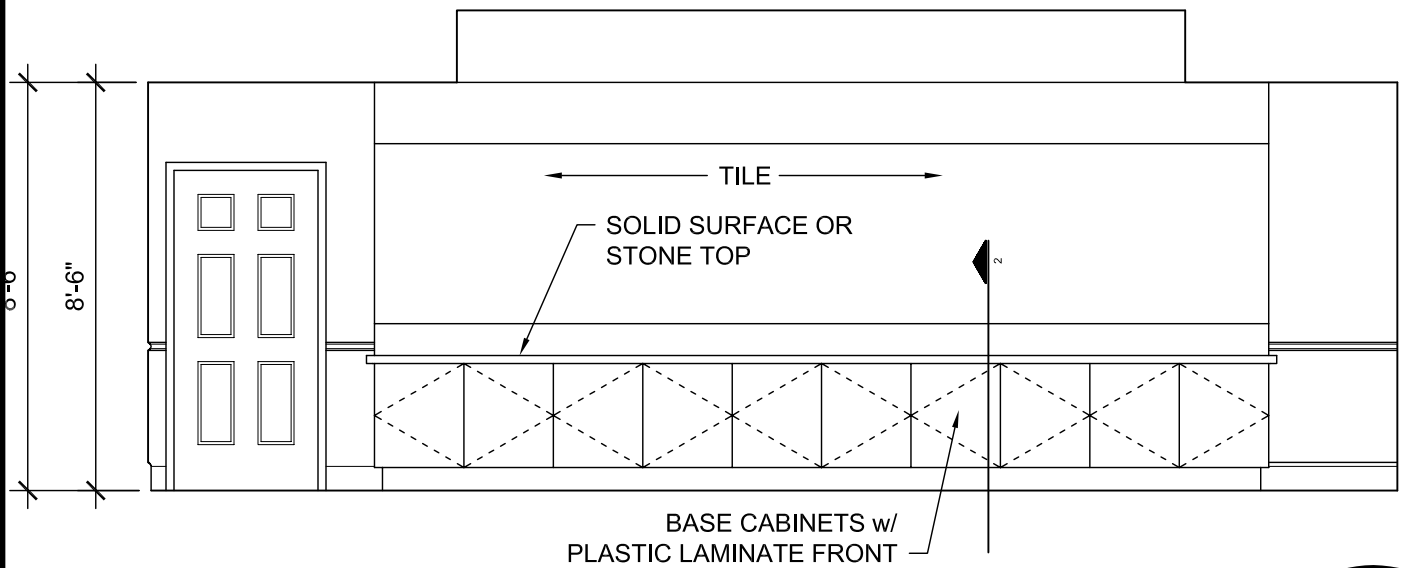


OCTOBER 2008

GUESTROOM BATH FLOORING



2 BREAKFAST BUFFET SECTION

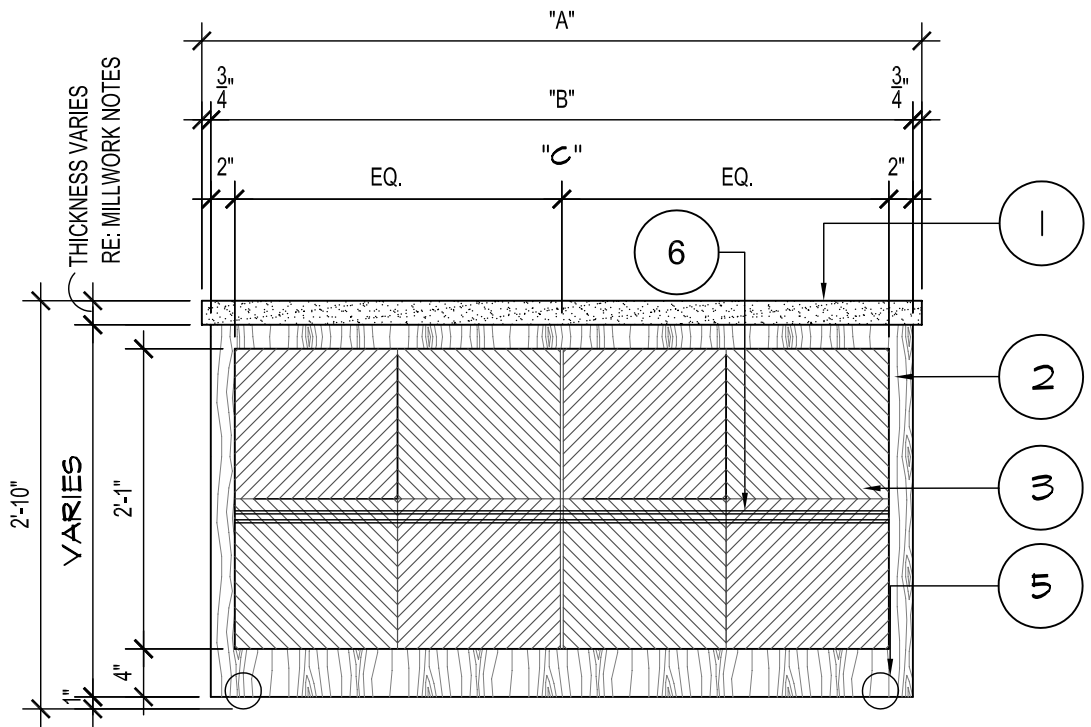


1 BREAKFAST BUFFET DESK ELEVATION

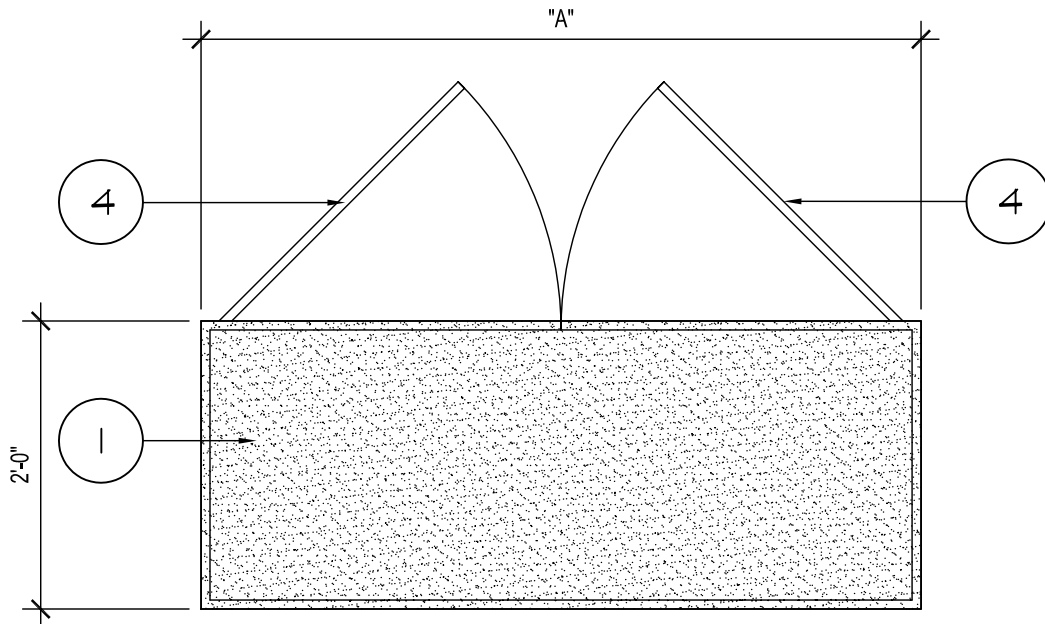
OCTOBER 2008



BREAKFAST AREA BUFFET



2 BREAKFAST CART FRONT ELEVATION

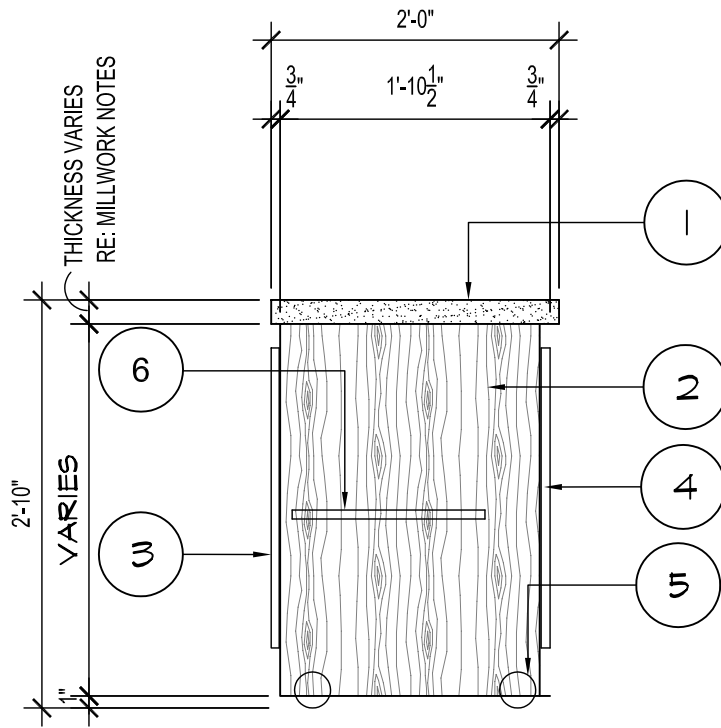


1 BREAKFAST CART PLAN

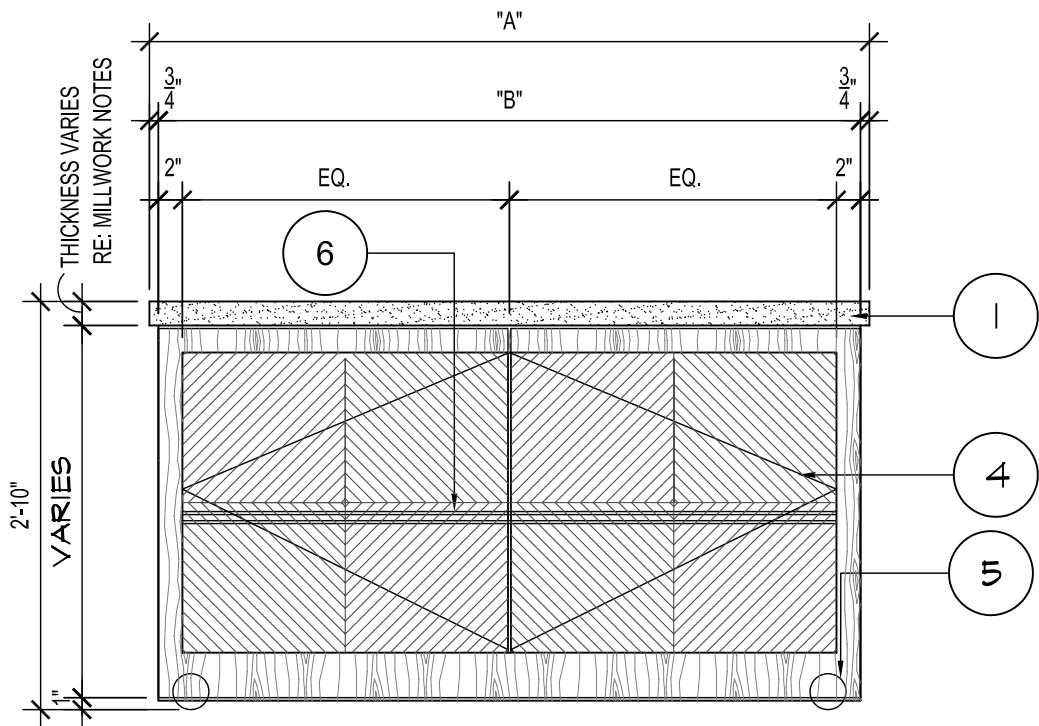
OCTOBER 2008



BREAKFAST CART



2 BREAKFAST CART SIDE ELEVATION



1 BREAKFAST REAR ELEVATION

OCTOBER 2008



BREAKFAST CART

KEY NOTES

1. COUNTERTOPS TO BE AS NOTED IN MILLWORK SPEC NOTE 6.
2. CABINET FACE AND SIDE PANELS. $\frac{3}{4}$ " PLAM CLAD MDF PLYWOOD. EXPOSED FACES TO HAVE PLAM VENEER PATTERNS IN VERTICAL DIRECTION. RE: PLAM SPECS AT MILLWORK SPEC. NOTE 5.
3. RAISED FACE PANELS - $\frac{3}{4}$ " PLAM FACED MDF PLYWOOD. EXPOSED FACES TO BE PLAM WITH VENEER PATTERN ROTATED 45°, BOOK MATCHED IN 4 QUADRANTS, AS SHOWN. $\frac{1}{4}$ " REVEAL JOINT BETWEEN PANELS.
4. FLUSH OVERLAY PANEL DOORS WITH SELF CLOSING, CONCEALED "EUROPEAN" STYLE HINGES. $\frac{3}{4}$ " PLAM FACED MDF PLYWOOD. EXPOSED FACES TO BE PLAM WITH VENEER PATTERN ROTATED 45°, BOOK MATCHED IN 4 QUADRANTS, AS SHOWN. $\frac{1}{4}$ " REVEAL JOINT BETWEEN DOORS. CONCEALED INTERIOR FACES TO BE MELAMINE VENEER.
5. CASTERS (4-PLACES-MIN.). 3"Ø CASTER WHEELS MOUNTED TO CABINET SUB-FRAME. CASTERS SHALL BE DURABLE, HARD SYNTHETIC, MAINTENANCE FREE WITH SEALED BEARINGS AND LOCKABLE 360° SWIVEL.
6. ADJUSTABLE SHELF WITH MULTIPLE HOLE PIN MOUNTING (MIN. 5mm DIAMETER PINS). HOLES SHALL BE AT 1½" o.c. VERTICALLY.

SIZE	"A"	"B"	"C"
24"x42"	42"	40½"	36½"
24"x48"	48"	46½"	42½"
24"x60"	60"	58½"	54½"
24"x72"	72"	70½"	66½"

MILLWORK SPECIFICATION

1. **CABINET SHALL BE CONSTRUCTED TO MEET "AWI" PREMIUM GRADE STANDARDS.**
2. **PLYWOOD SHALL BE $\frac{3}{4}$ " MEDIUM DENSITY FIBERBOARD CORE (MDF) WITH PLAM CLADDING AS NOTED ON ALL EXPOSED FACES AND MELAMINE VENEERS ON INTERIOR CONCEALED FACES. EDGES SHALL BE BANDED WITH PLAM TO MATCH FACE PATTERNS.**
3. **STYLE SHALL BE "FLUSH OVERLAY".**
4. **ALL FASTENING SHALL BE FULLY CONCEALED.**
5. **CABINET FACE, PANELS AND DOOR PLAM TYPES AS FOLLOWS:**
 - **VIBRANT SCHEME:** 'PLAM-VF': WILSONART, 7928-38 CASTLE OAK
 - **UNIQUE SCHEME:** 'PLAM-UF': WILSONART, 7817-60 OREGON OAK
 - **FRESH SCHEME:** 'PLAM-FF': WILSONART, 7925-38 MONTICELLO MAPLE
6. **COUNTERTOP TYPES TO BE AS FOLLOWS:**
 - **VIBRANT SCHEME:**
 - **AT INNS & SUITES: 'STONE-VC'** WITH 1½" THICK SQUARE EASED-EDGES. 'STONE-VC': DAL TILE, 'GOLDEN LEAF' G293-POLISHED.
 - **AT INNS: 'PLAM-VC'**=FORMICA, EBONY #9012, ARTISAN FINISH- WITH WOOD MOLDING EDGING STAINED TO MATCH 'PLAM-VC'.
 - **UNIQUE SCHEME:**
 - **AT INNS & SUITES: 'SOLID SURFACE-UC'** WITH 2" THICK SQUARE EASED-EDGES. 'SOLID SURFACE-UC'= WILSONART, GIBRALTER #1530 TM BEIGE TEMPEST.
 - **AT INNS - 'PLAM-UC'** WITH STAINED WOOD MOLDING EDGING (STAINED TO MATCH FINISH OF HARTCO - 5000 PRE-FINISHED FLOORING - COLOR: GRAY). 'PLAM-UC'= WILSONART, 4814-60 TUNGSTEN EV.
 - **FRESH SCHEME:**
 - **AT INNS & SUITES: 'STONE-FC'** WITH 2" THICK SQUARE EASED-EDGES. 'STONE-F'= UBATUBA - POLISHED.
 - **AT INNS: 'PLAM-FC'** WITH STAINED WOOD MOLDING EDGING (STAINED TO MATCH PLAM-FF) - 'PLAM-FC': FORMICA, 909-58 BLACK-MATTE FINISH.

OCTOBER 2008



BREAKFAST CART

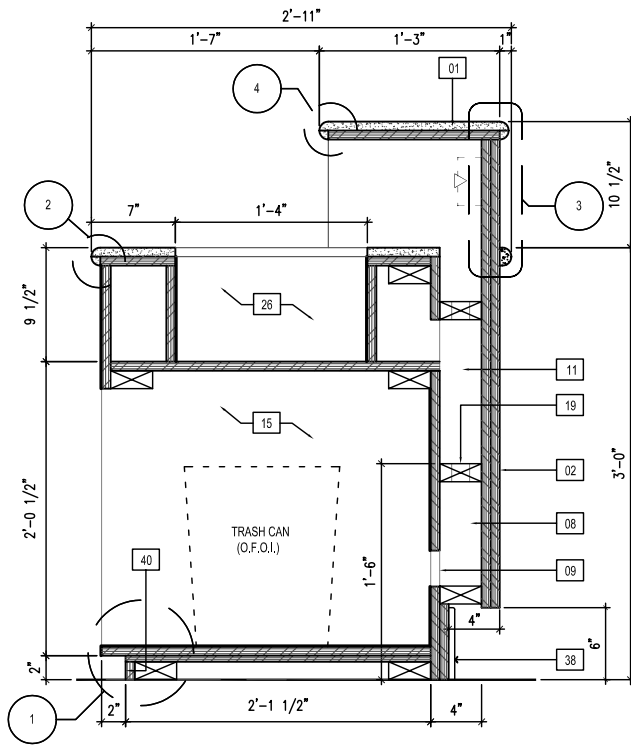
REGISTRATION DESK CONSTRUCTION NOTE LEGEND

01	GRANITE COUNTERTOP	29	SLIDE OUT SHELF WITH PLASTIC LAMINATE FINISH.
02	PLASTIC LAMINATE PL-D	30	COMPUTER CABINET WITH SLIDE-OUT SHELF. DOORS TO HAVE PERFORATED METAL SCREEN FOR VENTILATION.
03	GRANITE TRIM	31	MONITOR FOR SECURITY CAMERA.
04	OPEN CABINET WITH TRASH STORAGE BELOW.	32	INTERCOM DESK.
05	"TACC-II" UNIT - OWNER FURNISHED. CONFIRM SIZE W/ OWNER PRIOR TO MILLWORK FABRICATION.	33	PAINT-ON KNOCKDOWN, TYPICAL.
06	PLASTIC LAMINATE CABINETRY. PL-2: EXPOSED MILLWORK MILLWORK CABINET SURFACES.	34	PLASTIC LAMINATE CLAD PLYWOOD DIVIDERS
07	S.S. DROP EDGE (1 1/2").	35	H.C. ACCESSIBLE COUNTER TO BE BUILD PER CODES.
08	OPEN ELECTRICAL RACEWAY.	36	TELEPHONE OUTLET, TYPICAL.
09	3" X 8" OPENING FOR ACCESS TO WIREWAY	37	SLIDE OUT SHELF FOR POSTING TRAY. 19" X 17" WIDE. FACE TO BE FLUSH WITH DRAWER FACE BELOW.
10	ADJUSTABLE SHELF WITH LIP AT BACK EDGE.	38	WOOD BASE, TYPICAL.
11	OPEN COMMUNICATIONS WIREWAY.	39	CABINET WITH SLOTS AS SHOWN.
12	PLUGMOLD WITH OUTLETS.	40	3/4" SUBSTRATE-TOE KICK.
13	EACH PANEL (PLAM) CONSISTS OF FOUR PIECES PLACED AT 45 DEGREE ANGLES.	41	TESA UNIT - OWNER FURNISHED.
14	HARMONICA AND DATA PORTS INSTALLED BELOW PRINTER.	42	CREDIT CARD IMPRINTER - OWNER FURNISHED.
15	INTERIOR PANELS (MELAMINE COMPONENT PANELS) PL-3; ALL INTERIOR PANELS AND DRAWER INTERIORS TO BE M.C.P.	43	RESERVATIONS TELEPHONE OWNER FURNISHED.
16	ISOLATED GROUND DEDICATED CIRCUIT OUTLET.	44	COMPUTER PRINTER - OWNER FURNISHED ON RECESSED COUNTERTOP WITH FRONT ACCESS.
17	FILE DRAWERS TYPICAL.	45	FLAT SCREEN MONITOR ON COUNTERTOP WITH KEYBOARD OWNER FURNISHED.
18	WIRE MANAGEMENT TROUGH.	46	PLASTIC LAMINATE FINISH, TYPICAL.
19	1 1/2" DIAMETER HOLE WITH GROMMET.	47	TELEPHONE CONSOLE - OWNER FURNISHED
20	LINE OF KEYBOARD UNIT PULL-OUT.	48	ARTWORK U-LOB-531-ART, TYPICAL.
21	GUEST SAFETY DEPOSIT BOX (O.F.C.I.).	49	CABINET WITH ADJUSTABLE SHELF WITH LIP AT BACK EDGE.
22	PERFORATED METAL SCREEN. McNICHOLS, STAINLESS STEEL, 18 HOLES P.S.I. 50% O/A, 3/16" DIAM. AT 1/4" STAGGERED CENTERS	50	3/4" PLYWOOD, TYPICAL.
23	CASH DRAWER - OWNER FURNISHED; MMF INDUSTRIES MODEL #R6T225-1060D-01. (17 3/4"W X 3 3/4"H X 15 3/4"D) CONTRACTOR TO INSTALL AND ATTACH TO MILLWORK PRIOR TO FINAL FABRICATION. VERIFY SIZE/MODEL# BEFORE FABRICATION W/ OWNER'S REP.	51	1/2" PLYWOOD, TYPICAL.
24	1/4" CLEAR ACRYLIC DIVIDERS W/ EXPOSED EDGES POLISHED.	52	1X2 WOOD TRIM.
25	OPEN CABINETS TYPICAL WITH ADJUSTABLE SHELVES.		
26	FOLIO BUCKET - RECESSED IN COUNTER TOP WITH A CLEAR OPENING OF 16" X16"X 9 1/2" DEEP - OWNER FURNISHED.		
27	SLIDE-OUT SHELF WITH LIP AT BACK EDGE. ACCURIDE PULL-OUT SHELF RUNNER, MODEL # 322.		
28	RECESSED PAPER STORAGE BEHIND PRINTER.		

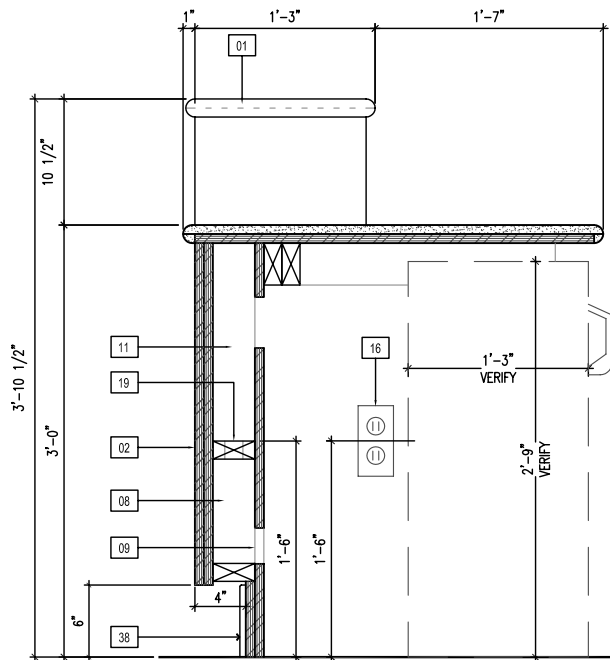
OCTOBER 2008



REGISTRATION FRONT DESK



2 REGISTRATION DESK SECTION

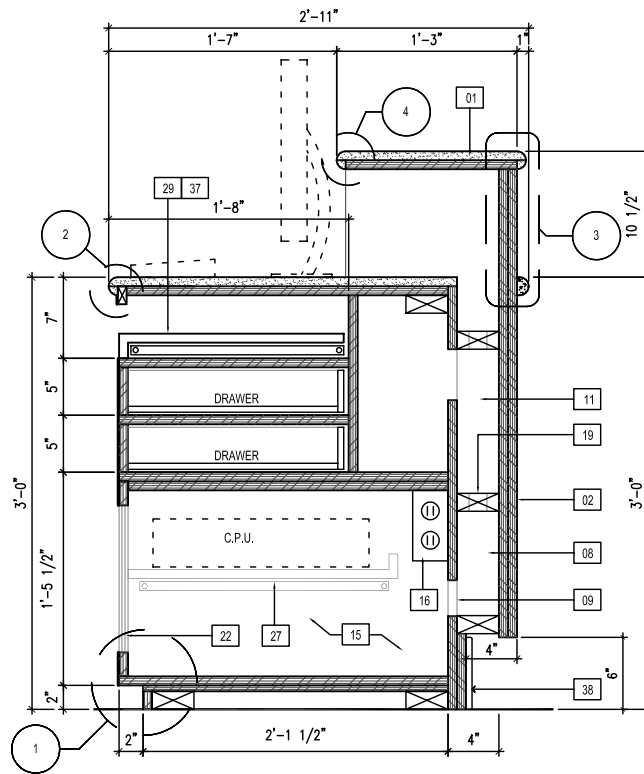


1 REGISTRATION DESK SECTION

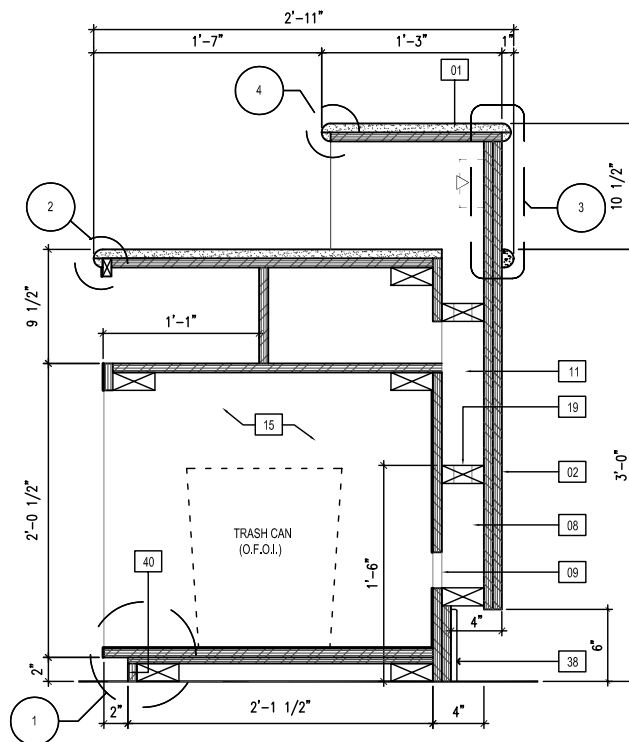


OCTOBER 2008

REGISTRATION DESK SECTIONS



4 REGISTRATION DESK SECTION

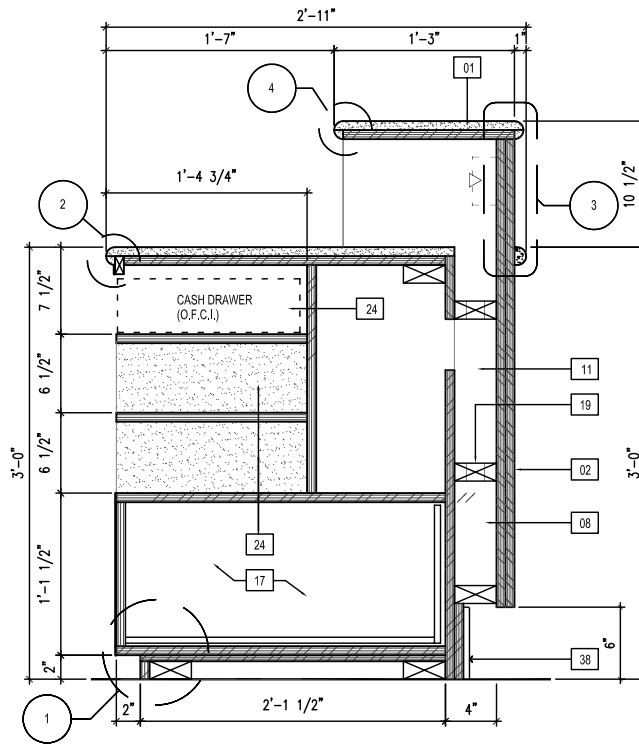


3 REGISTRATION DESK SECTION

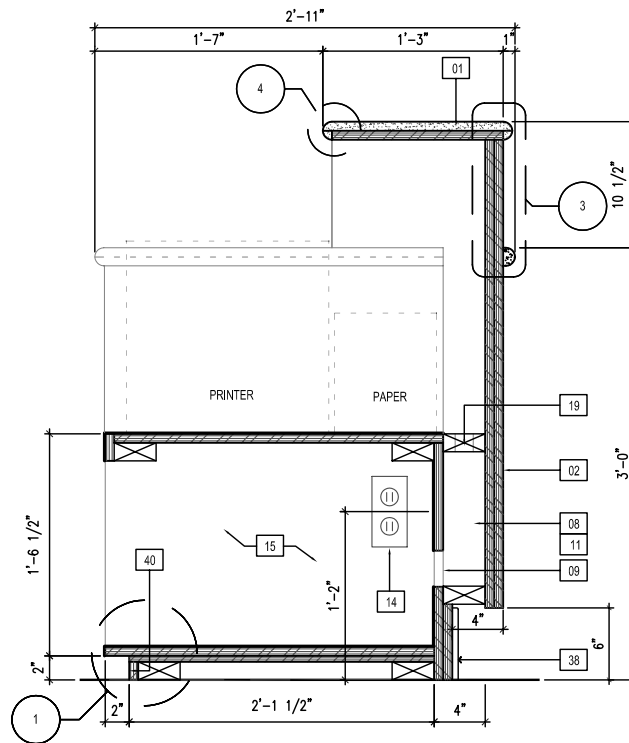


OCTOBER 2008

REGISTRATION DESK SECTIONS



6 REGISTRATION DESK SECTION

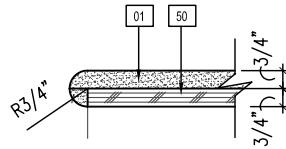


5 REGISTRATION DESK SECTION

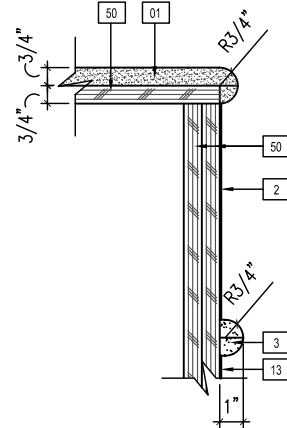


OCTOBER 2008

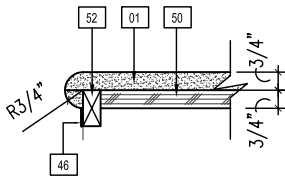
REGISTRATION DESK SECTIONS



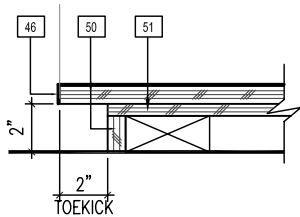
4 REGISTRATION DESK DETAIL



3 REGISTRATION DESK DETAIL



2 REGISTRATION DESK DETAIL

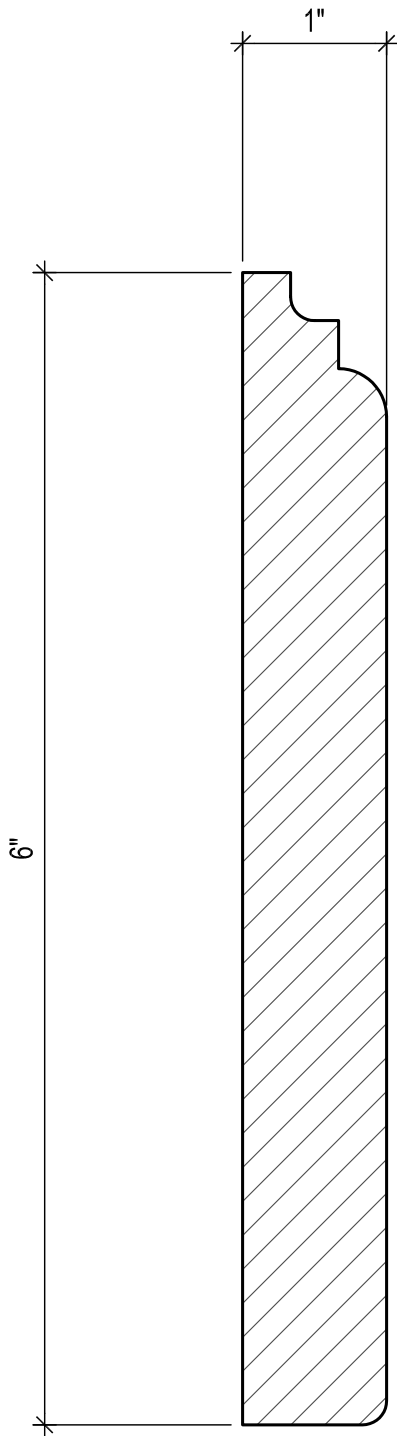


1 REGISTRATION DESK DETAIL

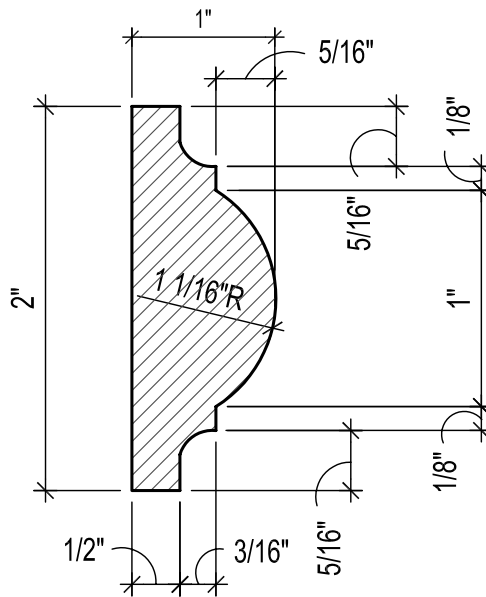


OCTOBER 2008

REGISTRATION DESK DETAILS



1 WOOD BASE DETAIL

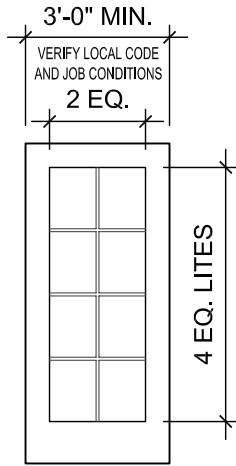


2 CHAIR RAIL DETAIL

OCTOBER 2008



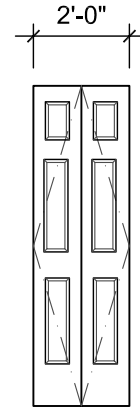
WOOD BASE AND CHAIR RAIL



(D)

**STEEL W/GLAZED INSERT T.D.L.
FIRE RATED GLAZING
(WOOD GRAIN WITH NO MULLIONS
IF EXTERIOR DOOR)**

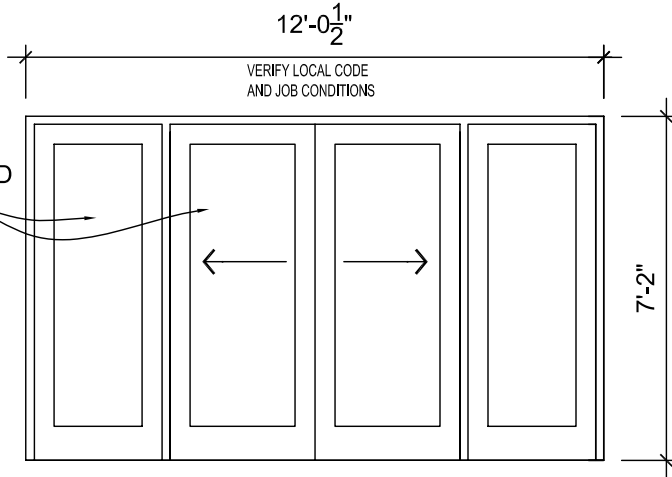
LOCATION: FROM CORRIDOR TO
BUSINESS CENTER AND EXERCISE ROOM
AND FROM LOBBY TO LUGGAGE ROOM
BETWEEN ROOMS IN TWO-ROOM SUITE
(PAIR OF DOORS AT MEETING ROOM)



(S)

**HOLLOW CORE
6 PANEL COLONIST**

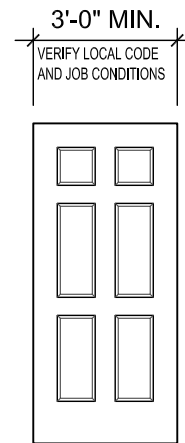
LOCATION: FROM GUEST ROOM
TO CLOSETS, AND FROM
MEETING ROOM TO CLOSET



(A)

**AUTOMATIC SLIDING
ALUMINUM ENTRANCE DOOR
WITH FIXED SIDE LITE**

LOCATION: ENTRY



(B)

STEEL (6 PANEL)

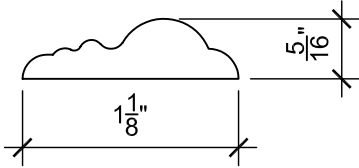
LOCATION: FROM CORRIDOR TO GUEST ROOMS,
STORAGE ROOMS, LINEN ROOMS, REGISTRATION/
WORK ROOM, SALES OFFICE, LAUNDRY,
MEN'S AND WOMEN'S TOILETS, ELECTRICAL
ROOMS, FROM BREAKFAST TO PANTRY

1 DOOR TYPES

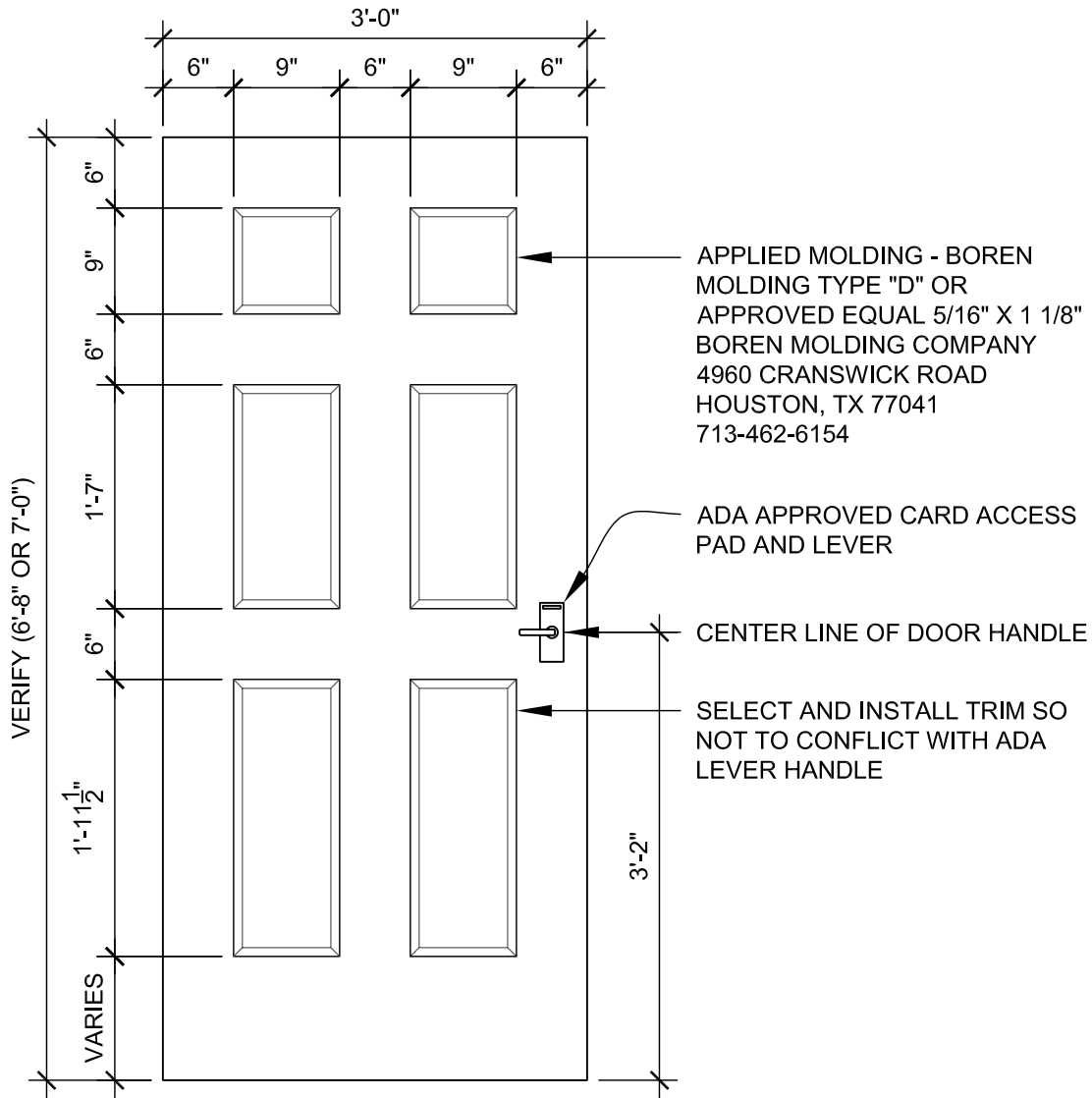
OCTOBER 2008



TYPICAL DOOR TYPES



2 APPLIED MOLDING PROFILE

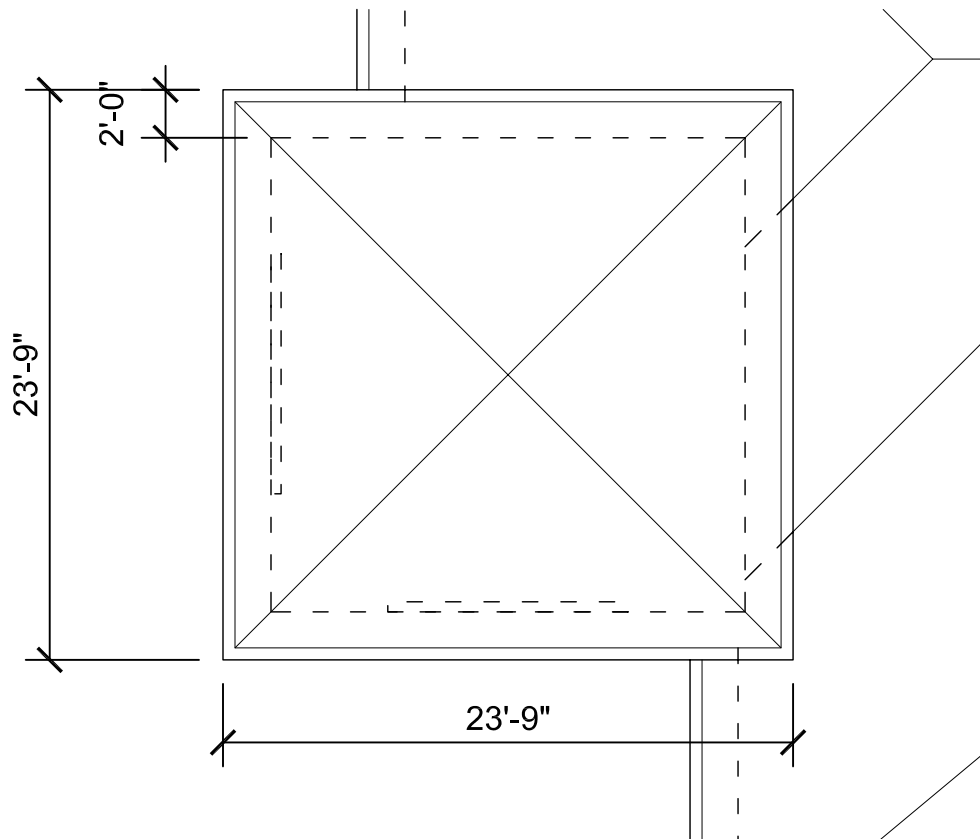


1 PANEL DOOR APPLIED MOLDING LAYOUT

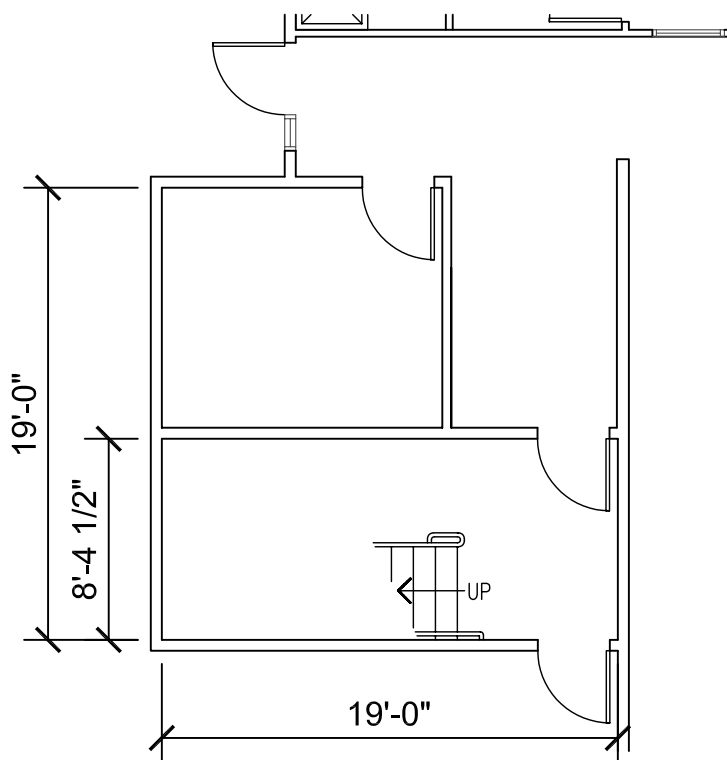
OCTOBER 2008



PANEL DOOR



2 TRADITIONAL TOWER ROOF PLAN

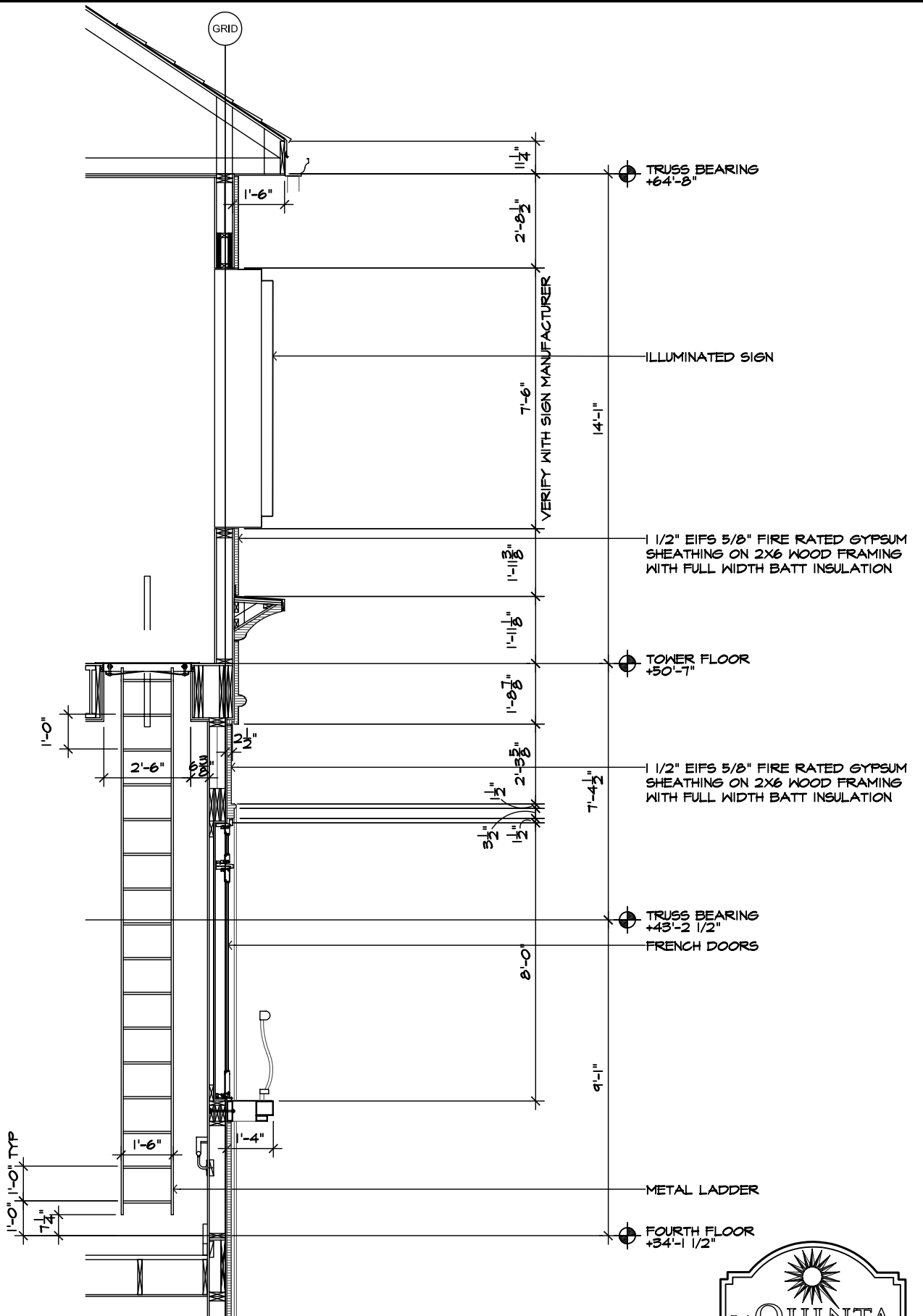


1 TRADITIONAL TOWER FIRST FLOOR PLAN

OCTOBER 2008



TRADITIONAL TOWER PLANS



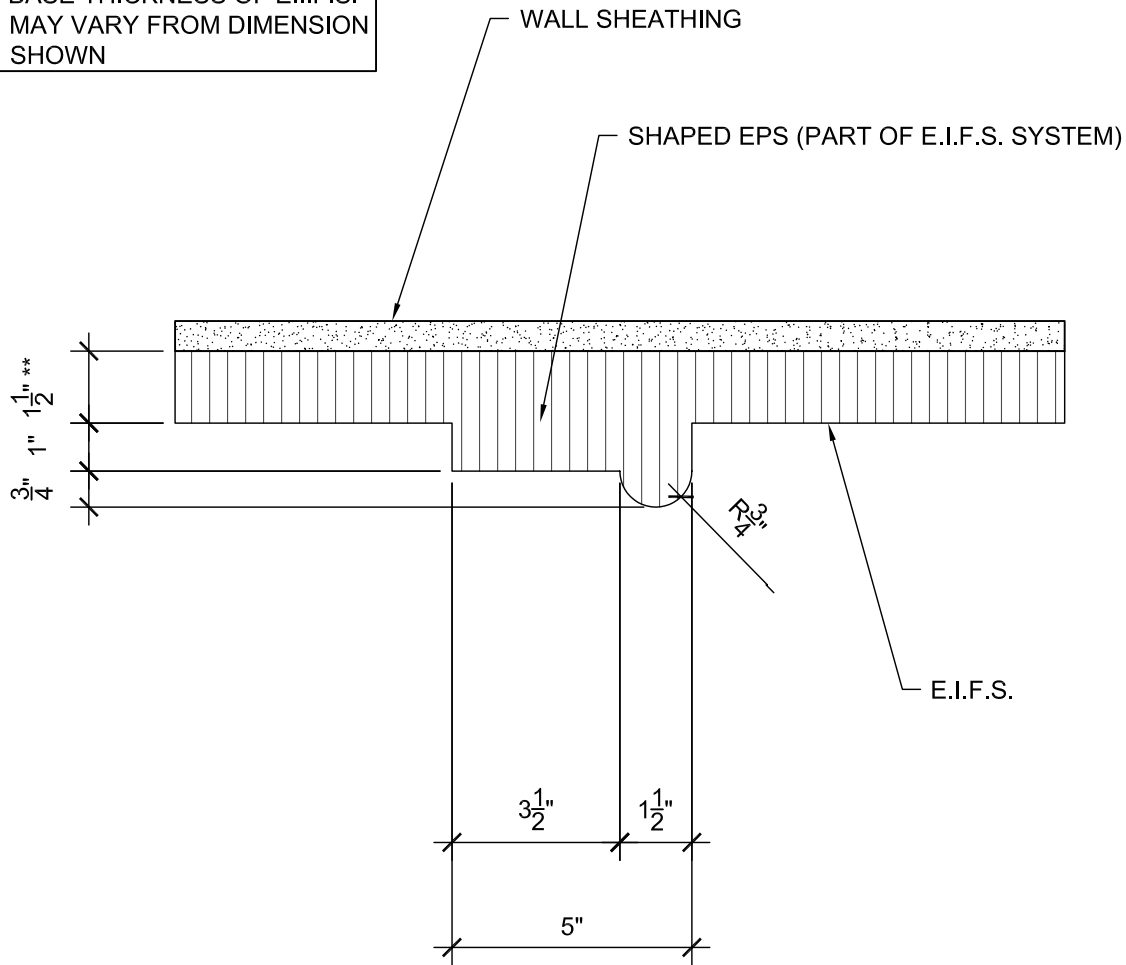
2 SECTION @ TOWER

OCTOBER 2008



TRADITIONAL TOWER SECTION

** BASE THICKNESS OF E.I.F.S. MAY VARY FROM DIMENSION SHOWN

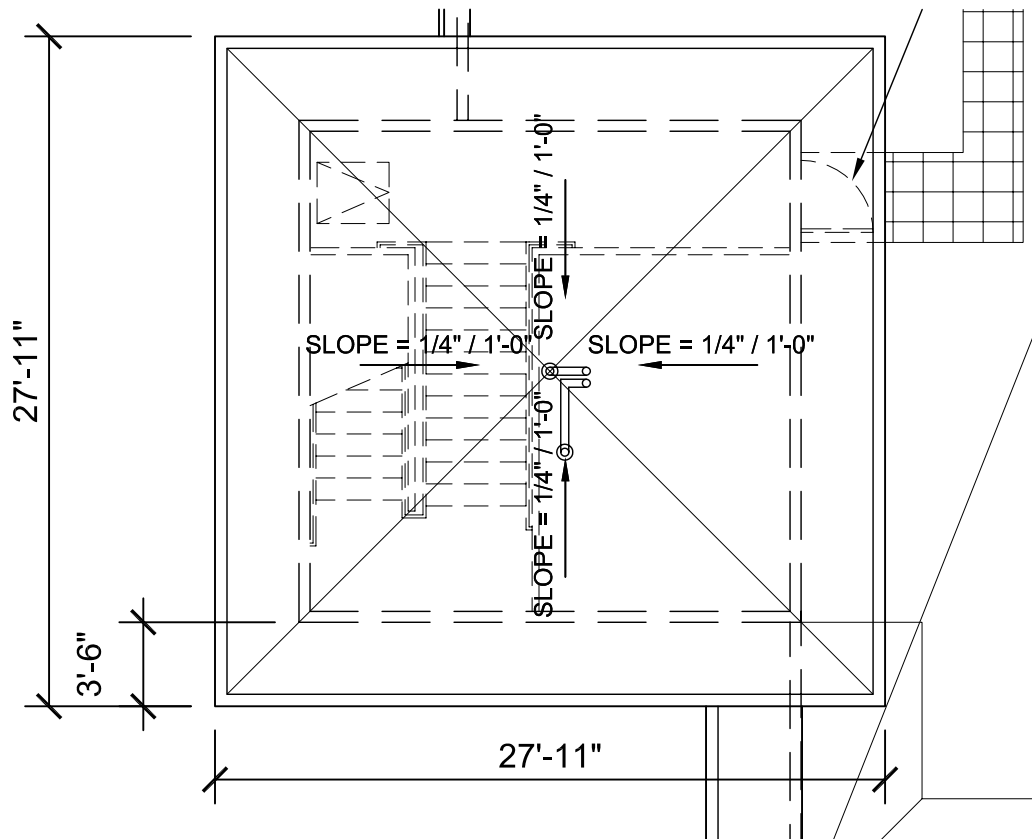


3 MOLDING SECTION

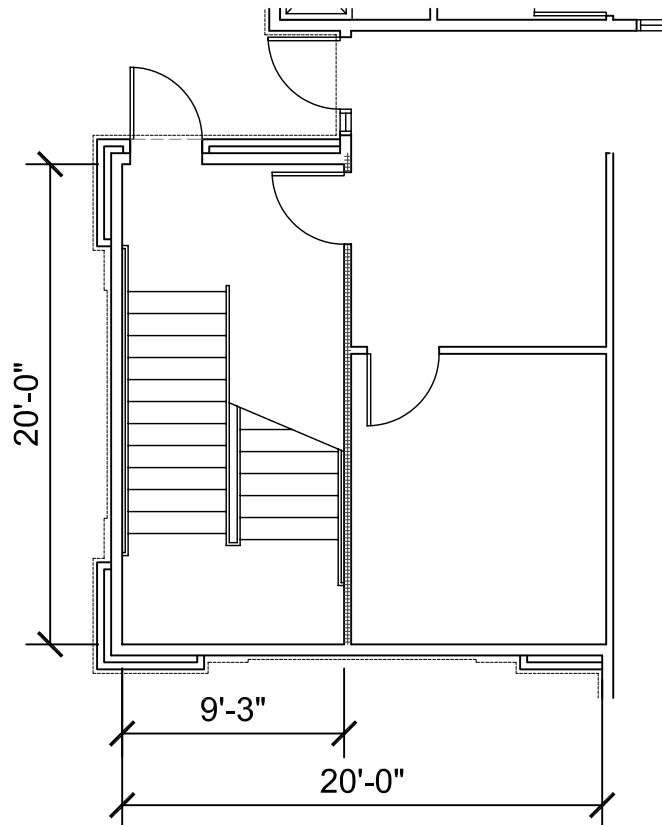


OCTOBER 2008

TRADITIONAL TOWER ELEVATION



2 URBAN TOWER ROOF PLAN

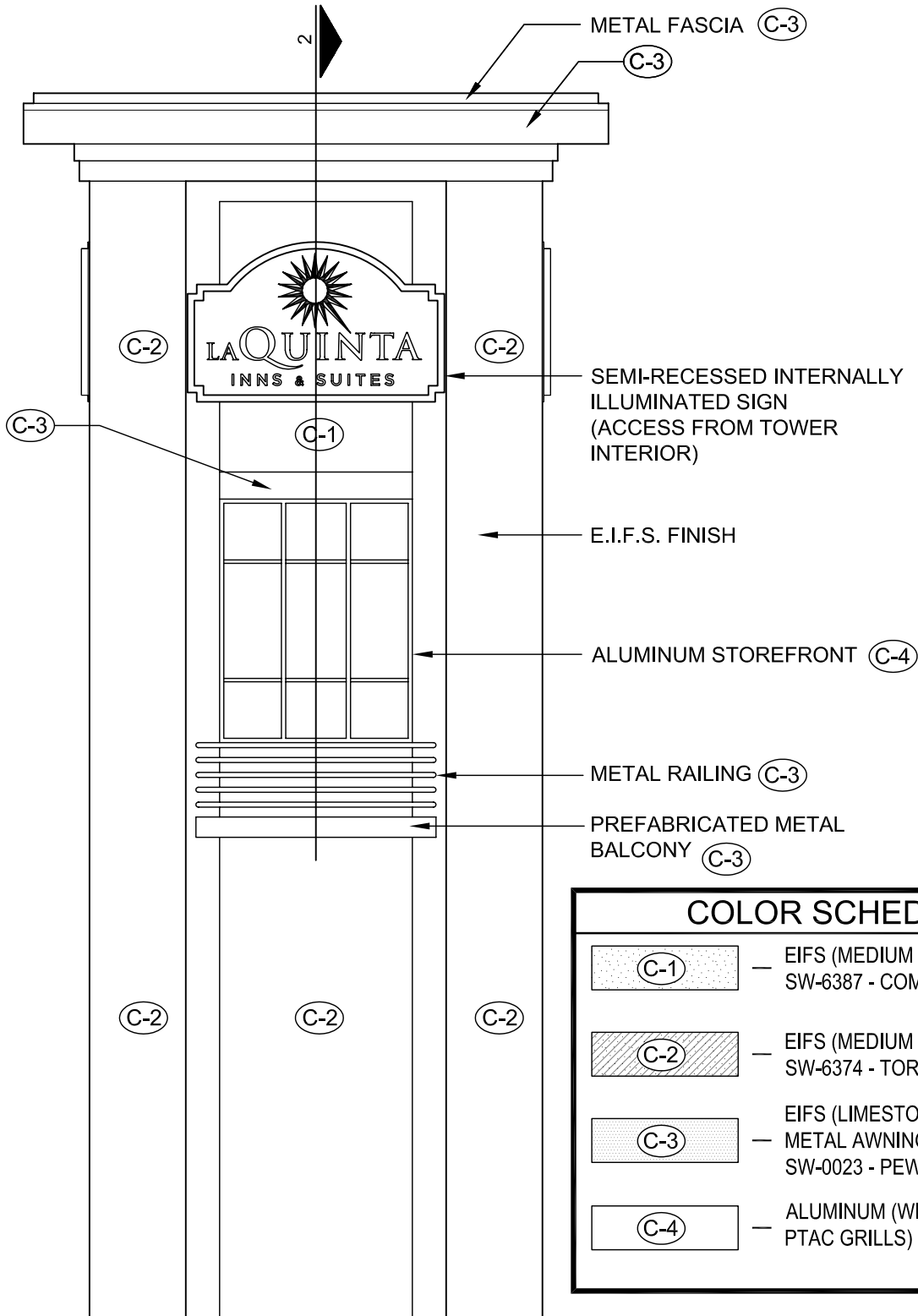


1 URBAN TOWER FIRST FLOOR PLAN

OCTOBER 2008



URBAN TOWER PLANS



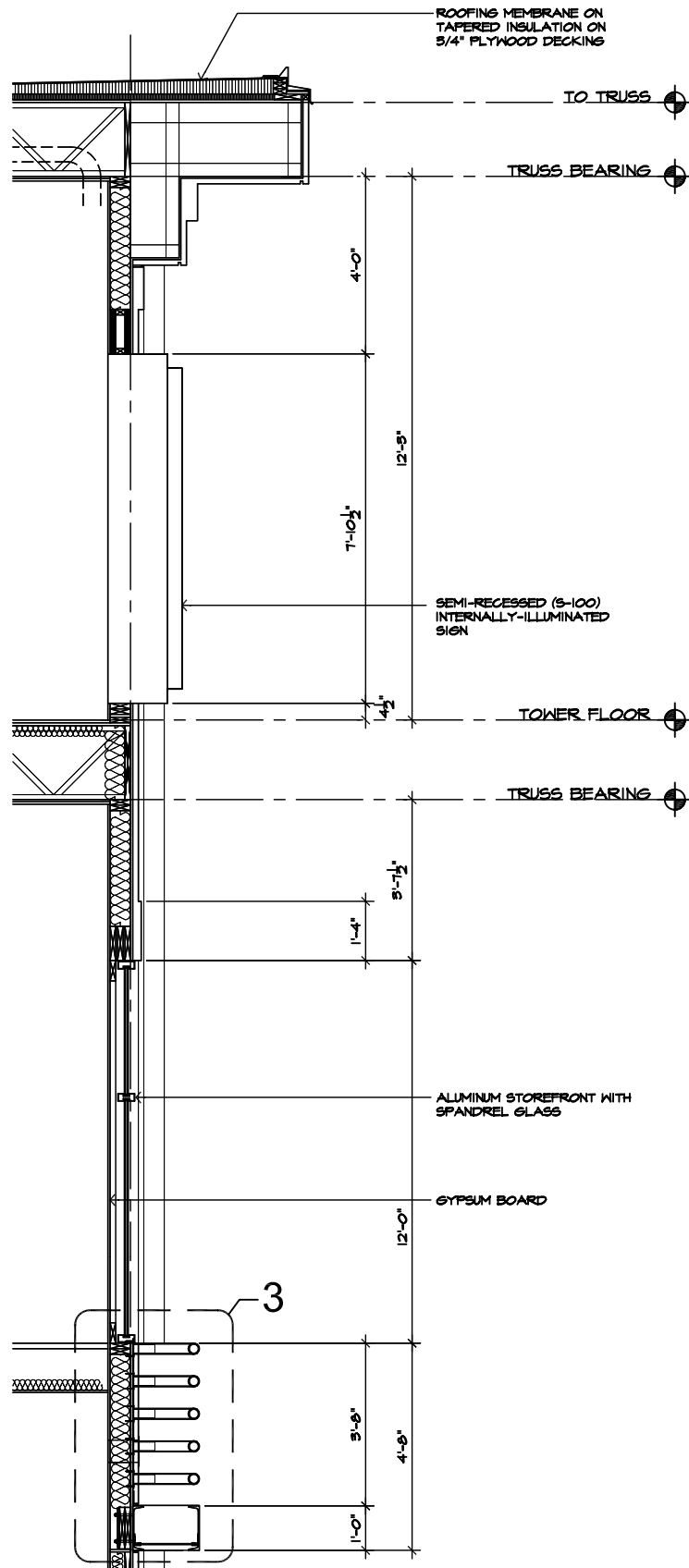
COLOR SCHEDULE	
	— EIFS (MEDIUM TEXTURE) SW-6387 - COMPATIBLE CREAM
	— EIFS (MEDIUM TEXTURE) SW-6374 - TORCHLIGHT
	— EIFS (LIMESTONE TEXTURE - PAINTED) — METAL AWNINGS, AND PREFAB. BALCONY SW-0023 - PEWTER TANKARD SEMI-GLOSS
	— ALUMINUM (WINDOWS, STOREFRONT, & PTAC GRILLS) - WHITE

1 TYPICAL TOWER ELEVATION



OCTOBER 2008

URBAN TOWER ELEVATION

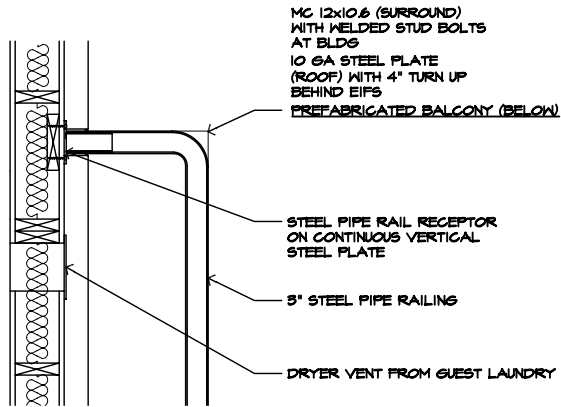


OCTOBER 2008

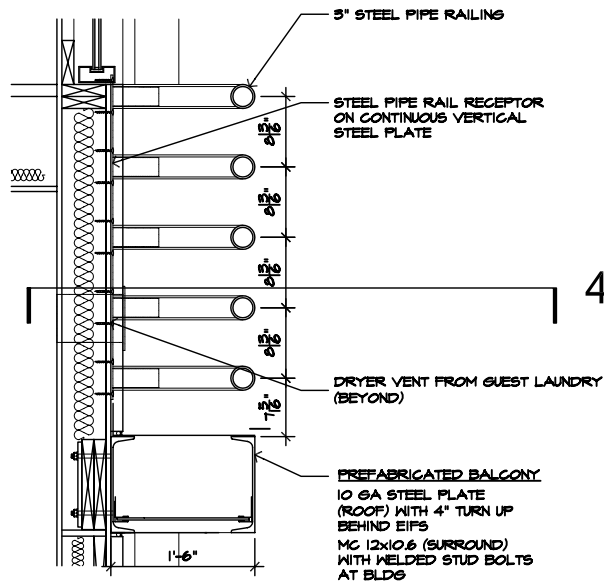
2 TOWER SECTION



URBAN TOWER SECTION



4 TOWER BALCONY PLAN DETAIL



3 TOWER BALCONY SECTION DETAIL



OCTOBER 2008

URBAN TOWER DETAILS