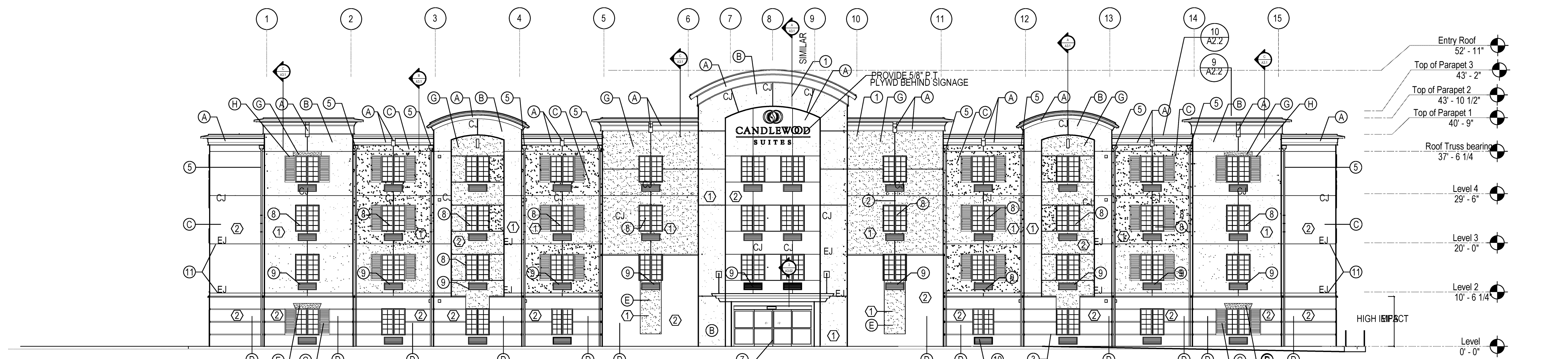


NOTE: REFER TO BUILDING ELEVATIONS FOR WINDOWS TO RECEIVE LINTELS, SILLS AND/OR

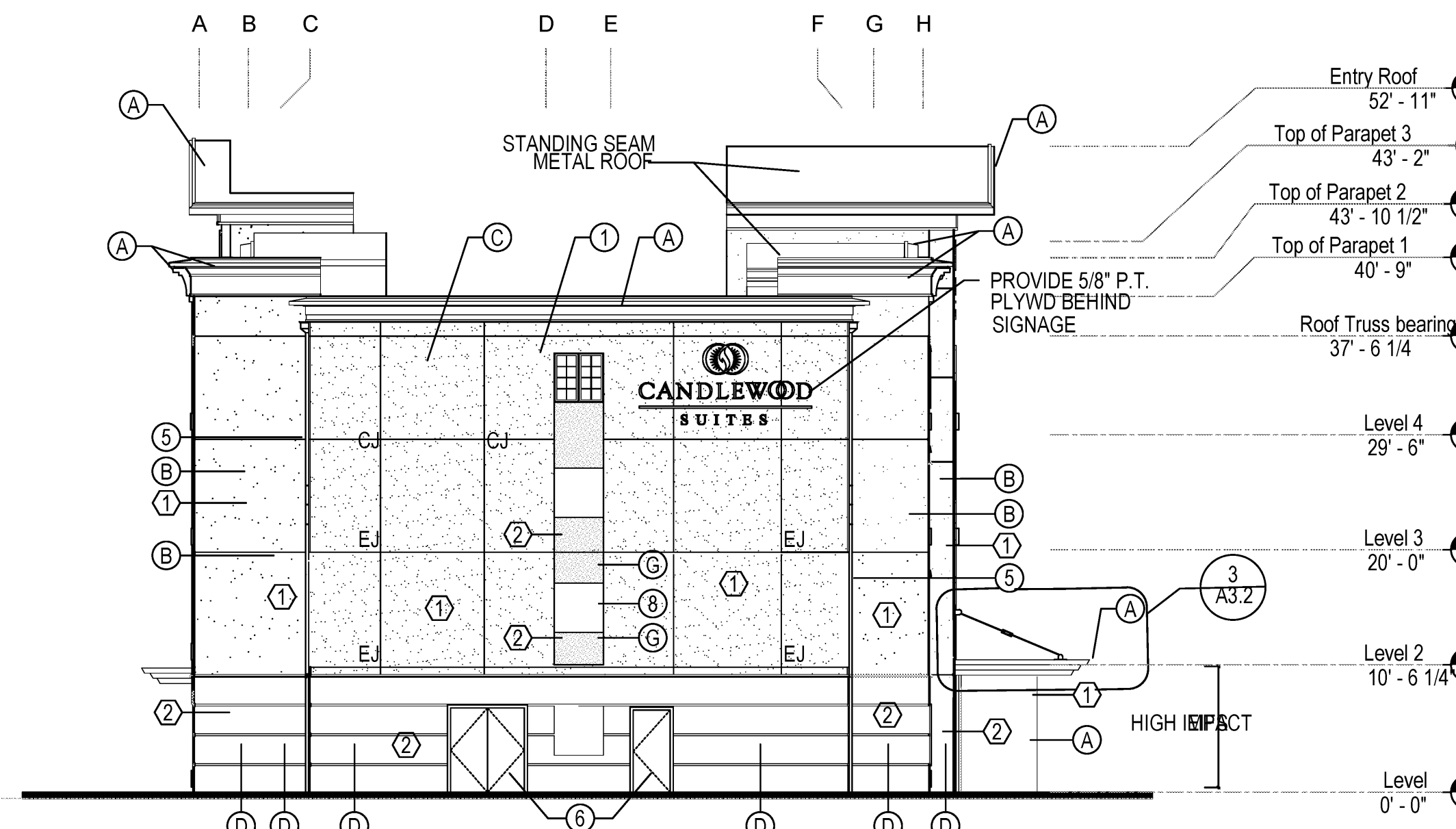
**TYPICAL WINDOW ELEVATIONS**  
1/2" = 1'-0"

**ELEVATION MATERIAL NOTES**

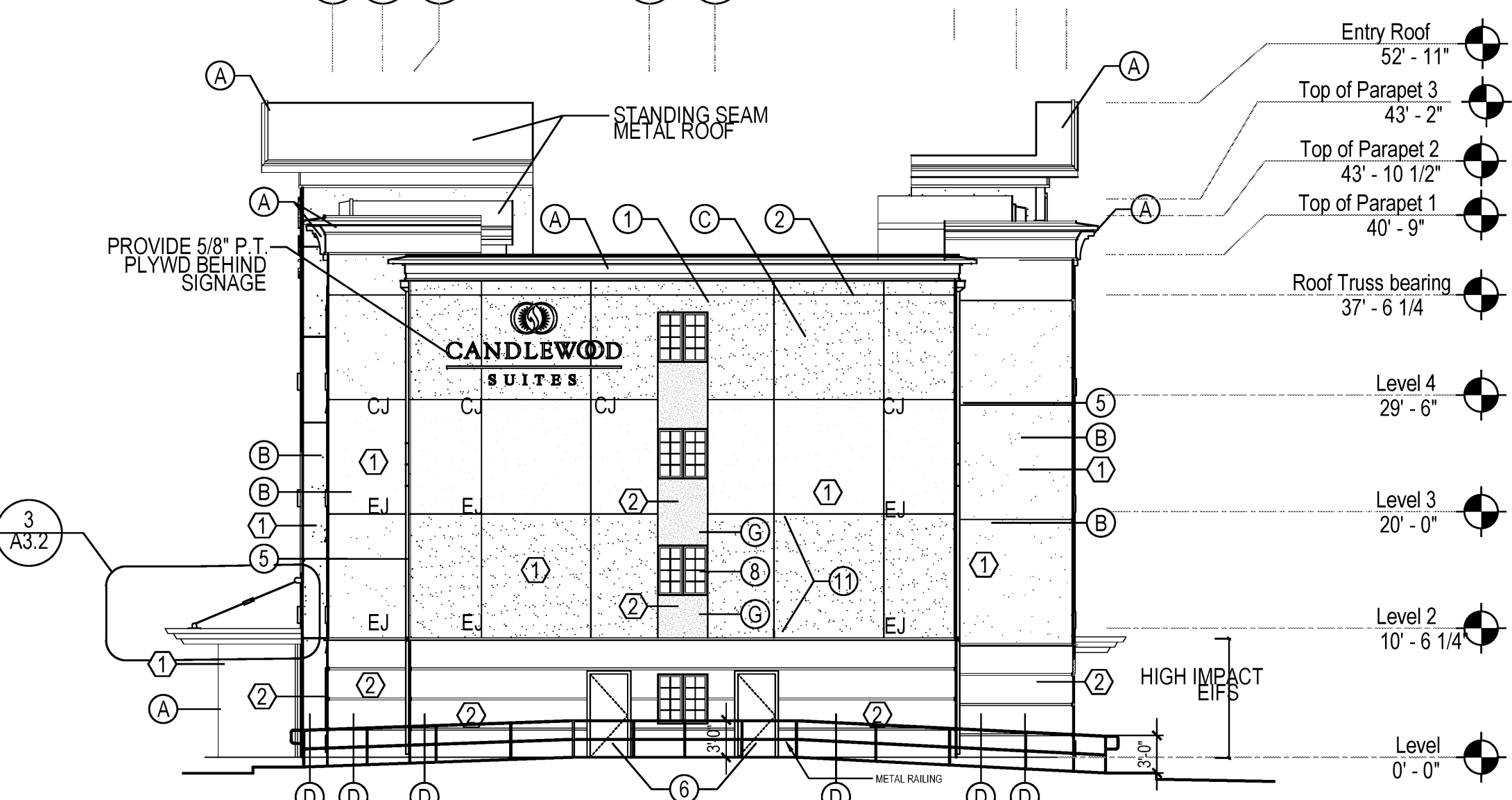
- 1 - WALLS - (E.I.F.S.)
  - 2 - EXTERIOR INSULATION FINISH SYSTEM
  - 3 - CONTROL JOINT INDICATED AS 'CJ' ON DRAWINGS
  - 4 - 2" HIGH x 1 1/2" DEEP RUSTICATION JOINT
  - 5 - NOT USED
  - 6 - PREFINISHED ALUMINUM COLLECTOR HEAD / GUTTERS & DOWNPOUT (BLACK, UNLESS OTHERWISE NOTED)
  - 7 - HOLLOW METAL DOORS
  - 8 - GLASS/ALUMINUM DOORS
  - 9 - 5'-0" x 4'-0" WINDOW
  - 10 - THRU-WALL HVAC UNIT - SEE MECH. - COLOR TO MATCH ADJACENT EIFS COLOR
  - 11 - MECH. LOUVERS - ALSO REF. STRUCT. DWGS. FOR HEADER SIZE AND LOCATION. FRONT LOUVER TO MATCH ADJACENT SURFACE
  - 12 - EXPANSION JOINT IN EIFS (INDICATED AS 'EJ' ON DRAWINGS)
  - 13 - SHEATHING WITH SEALANT & BACKER ROD. REFER DTLS. ANZ.2, SAG.2 & BRG.2
  - 14 - EXTERIOR LIGHTS - REFER TO ELECTRICAL
  - 15 - NON-FUNCTIONAL DECORATIVE LOUVER TO MATCH THRU-WALL HVAC LOUVER
- E.I.F.S. COLOR**  
MATCH EIFS COLOR TO THE FOLLOWING BENJAMIN MOORE COLORS
- |                      |            |
|----------------------|------------|
| 1 - WHITE HERON      | OC-87      |
| 2 - WHITE SAND       | OC-10      |
| 3 - PROVIDENCE OLIVE | HC-98      |
| 4 - LOG CABIN        | BM-2163-10 |
| 5 - VALLEY FORGE TAN | AC-55      |
| 6 - ANCHOR GRAY      | 2128-30    |
- E.I.F.S. THICKNESS**
- 1 - 2" THICK EIFS
  - 2 - 1 1/2" THICK EIFS
- NOTES:**
- COLOR OF FASCIA AND SOFFIT TO MATCH EIFS COLOR 'X'
  - CONDUCTOR HEADS SHALL BE SEAMLESS & PREFINISHED TO MATCH ADJOINING BUILDING SURFACE
  - ALL SHUTTERS COLOR TO MATCH BENJAMIN MOORE COLOR: 2128-30
  - EXTERIOR FINISH ALTERNATE: REPLACE EIFS BASE (C) WITH BRICK
  - BRACKET COLOR TO MATCH BENJAMIN MOORE COLOR: WHITE HERON OC-87



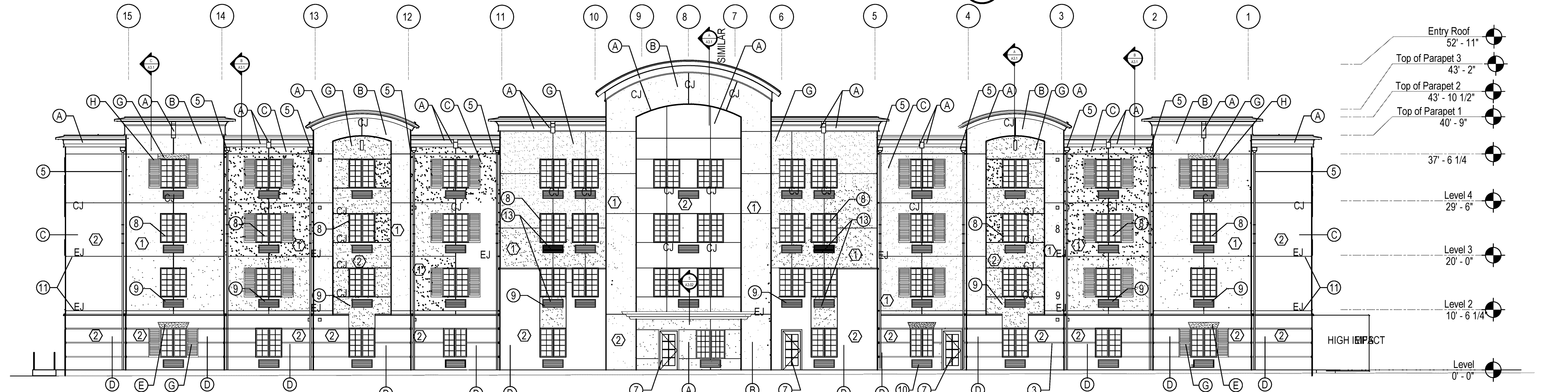
**A FRONT ELEVATION**  
SCALE: 3/32" = 1'-0"



**B LEFT ELEVATION**  
SCALE: 3/32" = 1'-0"



**C RIGHT ELEVATION**  
SCALE: 3/32" = 1'-0"

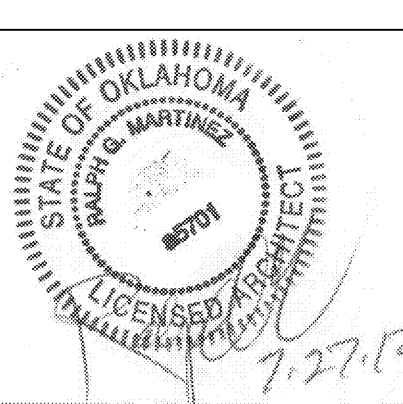


**D REAR ELEVATION**  
SCALE: 3/32" = 1'-0"

CDLW-16140  
WOODWARD,  
OKLAHOMA

PROJECT MANAGER  
RK Patel Design &  
Planning, LLC  
Project Architect  
RGM Architect

CANDELWOOD SUITES BY IHG  
NORTH EAST CORNER OF  
34th ST. and OKLAHOMA AVE.  
WOODWARD, OKLAHOMA



Revisions:


Drawn By:  
Checked By:  
Issue Date:  
Project No: 2012-06

SHEET INFORMATION  
**EXTERIOR ELEVATIONS**  
Sheet No:  
**A2.1**