

THE MARK... ARCHITECTURAL FLOOR PLAN...

GENERAL NOTES

- ALL DIMENSIONS ARE FACE-OF-WALL TO FACE-OF-WALL UNLESS NOTED OTHERWISE.
- REFER TO PARTITION TYPES FOR PARTITION THICKNESS WHERE NOT SHOWN ON PLAN.
- ALL MANUFACTURED ARTICLES, MATERIALS, AND EQUIPMENT SHALL BE CONDITIONED, USED APPLIED, INSTALLED, CONNECTED, ERECTED, AND CLEANED IN ACCORDANCE WITH THE MANUFACTURERS WRITTEN SPECIFICATIONS OR INSTRUCTIONS.
- FOR ALL WOOD MEMBERS REQUIRED BY CODE TO BE FIRE RETARDANT TREATED, PROVIDE PRESSURE IMPREGNATION WITH FIRE RETARDANT CHEMICALS TO PROVIDE UL FRS FIRE HAZARD CLASSIFICATION. ALL WOOD SHALL BE IDENTIFIED WITH A UL LABEL CERTIFYING THIS CLASSIFICATION AND FM DIAMOND.
- APPROVED FIRE EXTINGUISHERS SHALL BE FURNISHED, LOCATED, AND INSTALLED BY THE GENERAL CONTRACTOR, AS REQUIRED BY THE GOVERNING BODY. COORDINATE EXACT LOCATION WITH THE ARCHITECT.
- ALL FIRE EXTINGUISHERS SHALL BE FIVE POUND "ABC" RATED FIRE EXTINGUISHER(S) AND/OR CABINET(S) WHERE SHOWN ON THESE PLANS.
- ALL PENETRATIONS OF FIRE RESISTIVE FLOORS OR SHAFT WALLS SHALL BE PROTECTED BY MATERIALS AND INSTALLATION DETAILS THAT CONFORM TO UL STANDARDS FOR THROUGH PENETRATIONS FIRESTOP SYSTEMS. SEAL AROUND ALL PENETRATIONS (DUCTS, PIPES, CONDUITS, ETC.) AT FIRE-RATED ASSEMBLIES. SEAL SHALL NOT DIMINISH RATING OF ASSEMBLY. AT CONCRETE, OR MASONRY, SEAL OFF OPENINGS WITH CONCRETE GROUT. AT PLASTER OR DRYWALL, DAM UP GAPS AND FILL WITH UL APPROVED SEALANT OR PUTTY PER MANUFACTURERS RECOMMENDATIONS.
- WRAP AROUND ALL ARCHITECTURAL, MECHANICAL, OR ELECTRICAL BOXES, RECESSED/PENETRATED INTO ANY FIRE-RATED WALLS WITH 5/8" TYPE "X" GYPSUM BOARD UNLESS WALL IS OF CONCRETE CONSTRUCTION.
- SEAL AROUND ALL PENETRATIONS (DUCTS, PIPES, CONDUITS, ETC.) AT NEW AND EXISTING FIRE-RATED ASSEMBLIES. SEAL SHALL NOT DIMINISH RATING OF ASSEMBLY, CONCRETE, OR MASONRY. SEAL OFF OPENINGS WITH CONCRETE GROUT. AT PLASTER OR DRYWALL, DAM UP GAPS AND FILL WITH UL APPROVED SEALANT OR PUTTY PER MANUFACTURERS RECOMMENDATIONS.

DAMMON
 ENGINEERING, INC.
 LOUISIANA & MISSISSIPPI

Chief Engineer: Brian Misch, PE
 554 Old Spanish Trail
 Slidell, LA 70468
 www.dammonengineering.com
 info@dammonengineering.com
 PH: 985.649.5832 F: 985.641.9590

REVISIONS	DATE

#	DESCRIPTION
1	

STAY SUITES
 100 MAIN STREET
 LOT #1 LA HWY 27
 HACKBERRY, LA 70645
 JOB No: 22851 DATE: APRIL 2016
 DRAWN BY: JTL CHECKED BY: JMS

SHEET TITLE:
 ARCHITECTURAL FLOOR PLANS
 DRAWING NUMBER:
A101
 SHEET No: 17 of 52

- - - - - INDICATES A 1 HOUR RATED WALL ASSEMBLY

FLOOR-CEILING SYSTEMS, WOOD-FRAMED

GA FILE NO. RC 2602 1 HOUR FIRE

BASE LAYER 5/8" TYPE X GYPSUM WALLBOARD APPLIED AT RIGHT ANGLES TO WOOD ROOF TRUSSES 24" O.C. WITH 1-1/4" TYPE W OR S DRYWALL SCREWS 24" O.C.
FACE LAYER 5/8" TYPE X GYPSUM WALLBOARD OR GYPSUM VENEER BASE APPLIED AT RIGHT ANGLES TO TRUSSES WITH 1-7/8" TYPE W OR S DRYWALL SCREWS 12" O.C. AT JOINTS AND INTERMEDIATE TRUSSES AND 1-1/2" TYPE G DRYWALL SCREWS 12" O.C. PLACED 2" BACK ON EITHER SIDE OF END JOINTS. JOINTS OFFSET 24" FROM BASE LAYER JOINTS. WOOD TRUSSES SUPPORTING 1/2" WOOD STRUCTURAL PANELS APPLIED AT RIGHT ANGLES TO TRUSSES WITH 8d NAILS. APPROPRIATE ROOF COVERING. CEILING PROVIDES ONE HOUR FIRE RESISTANCE PROTECTION FOR TRUSSES.

APPROX. CEILING WEIGHT: 5 PSF
 FIRE TEST: FM FC 172, 2-25-72; ITS, 6-6-96

BEARING WALL RATING 1 HR. FINISH RATING-23 MIN.

DESIGN NO. U333 1 HOUR FIRE

- WOOD STUDS: NOM. 2 BY 4 IN., SPACED 16 IN. O.C. EFFECTIVELY CROSS BRACED.
- GYPSUM BOARD: 5/8 IN. THICK, 4 FT. WIDE, APPLIED EITHER VERTICALLY OR HORIZONTALLY. SCREW ATTACHED TO STUDS AND PLATES WITH 1 1/4 IN. LONG TYPE W STEEL SCREWS, SPACED 12 IN. O.C. AMERICAN GYPSUM CO. TYPES AG-C, AG-X, G-PS AMERICA, INC. - PRO ROC TYPE C, CANADIAN GYPSUM CORP. - SUB. OF GEORGIA PACIFIC CORP. - TYPE 5, G-P GYPSUM CORP., SUB. OF GEORGIA PACIFIC CORP. - TYPE 5, LAFARGE NORTH AMERICA, INC. - TYPES LGFC-C, LGFC-GA, NATIONAL GYPSUM CO. - TYPES FC, FSW-C, FSW-G, PABCO GYPSUM, DIV. OF PACIFIC COAST BUILDING PROD., INC. - TYPE C OR PG-C, STANDARD GYPSUM, LLC - TYPE SG-C, TEMPLE-INLAND FOREST PRODUCTS CORP. - TYPE TG-C, UNITED STATES GYPSUM CO. - TYPES C, IP-X2, IPC-AR, USG MEXICO S A DE C V - TYPES C, IP-X2, IPC-AR.
- BATTS AND BLANKETS (OPTIONAL): MINERAL WOOL INSULATION, PARTIALLY OR COMPLETELY FILLING STUD CAVITY. THERMAFIBER LLC - TYPE 5A/B.
- SPRAY APPLIED CELLULOSE INSULATION MATERIAL. THE FIBER IS APPLIED WITH WATER TO COMPLETELY FILL THE ENCLOSED CAVITY IN ACCORDANCE WITH THE APPLICATION INSTRUCTIONS SUPPLIED WITH THE PRODUCT. NOMINAL DRY DENSITY OF 3.0 LB/FT³.
- U. S. GREENFIBER LLC - COCOON STABILIZED CELLULOSE INSULATION.
- AS AN ALTERNATE TO BATTS AND BLANKETS (ITEM 3) AND ITEM 3A - SPRAY APPLIED CELLULOSE INSULATION MATERIAL. THE FIBER IS APPLIED WITH WATER TO INTERIOR SURFACES IN ACCORDANCE WITH THE APPLICATION INSTRUCTIONS SUPPLIED WITH THE PRODUCT. APPLIED TO COMPLETELY FILL THE ENCLOSED CAVITY. MINIMUM DRY DENSITY OF 4.3 POUNDS PER CUBIC FT.
- MINIWOOD CO., INC. - CELLULOSE INSULATION.
- JOINTS AND NAILHEADS: WALLBOARD JOINTS COVERED WITH PAPER TAPE AND JOINT COMPOUND.

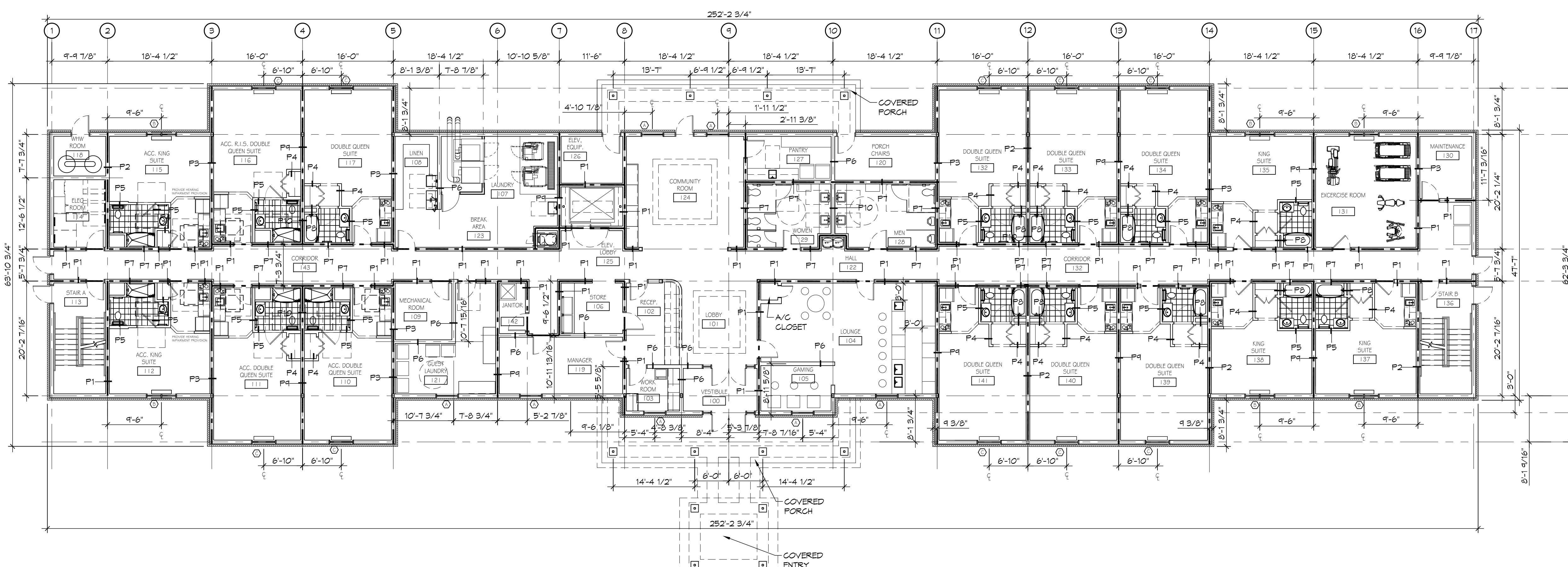
*BEARING THE UL CLASSIFICATION MARK

FLOOR-CEILING SYSTEMS, WOOD-FRAMED

GA FILE NO. FC 5513 1 HOUR FIRE

BASE LAYER 2" TYPE X GYPSUM WALLBOARD APPLIED AT RIGHT ANGLES TO MINIMUM 9 1/2" DEEP WOOD JOISTS, WITH MINIMUM 1/4" DEEP X 1 1/2" WIDE FLANGES AND MINIMUM 3/8" WEBS, 24" O.C. WITH 1-5/8" TYPE W OR S DRYWALL SCREWS 12" O.C. AT INTERMEDIATE JOISTS, 8" O.C. AT END JOINTS AND 1 1/2" TYPE G DRYWALL SCREWS 8" O.C. PLACED 6" BACK ON EITHER SIDE OF END JOINTS. JOINTS OFFSET 24" FROM BASE LAYER JOINTS. WOOD JOISTS SUPPORTING 1/2" PLYWOOD WITH LONG EDGES 1/4" APPLIED AT RIGHT ANGLES TO JOISTS WITH 8d COMMON NAILS. 1 1/2" LIGHTWEIGHT CONCRETE POURED OVER PLYWOOD.

APPROX. CEILING WEIGHT: 5 PSF
 FIRE TEST: FM J1, 2C9Q7 AC 9-29-76
 FM DESIGN FC-260



ARCHITECTURAL FLOOR PLAN - LEVEL 1
 SCALE: 3/32" = 1'-0"

NOTE: TOTAL GUESTROOMS = 62
 1ST FLOOR = 12
 2ND FLOOR = 25
 3RD FLOOR = 25

12 GUESTROOMS