

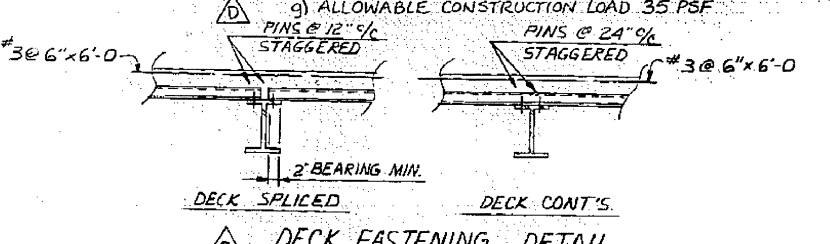
SECTION A-A
16'-0" (E59-1 ~ E59-4 & E57-1 ~ E57-2)

CONV'S	BELT SIZE	DIM. FOR DUAL CONV. GALLERY							
		A	B	C	D	E	F	G	H
BC-5A & BC-6E	4B	18'-4"	1'-2"	7'	16'-0"	1'-1"	1'-5"	3'-11 1/2"	2'-7"
BC-4A & BC-1B	4B	21'-6"	1'-2"	8'	14'-0"	1'-5"	1'-5"	3'-6"	2'-0"

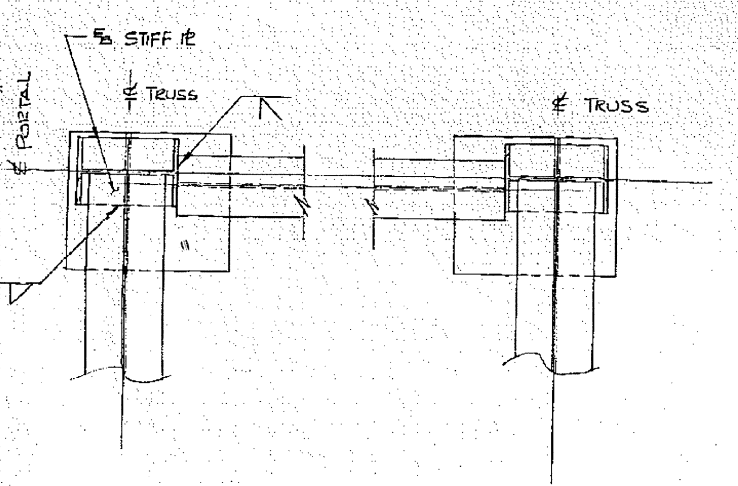
NOTE C:
DO NOT PLACE REIN. BARS WITHIN
"A" EITHER SIDE OF EXP. BOLT.

NOTE B: ROOFING & SIDING
1/2" HI-RIB 22 GA. STEELITE W/2"22
LINER PANEL & INSULATION

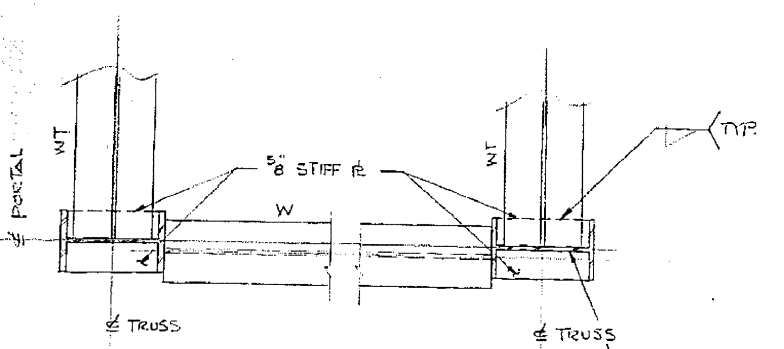
NOTE A: CONCRETE FLOOR SLAB
1) S_c = 400 PSI @ 28 DAYS
2) MAC-COR. TYPE 2, 22 GA. D4 T-WIRE @ 6" (DESIGN C)
3) 3" @ 6" 16'-0" LG. TOP OVER
ALL INTERIOR BENTS
4) SHORE SINGLE SPANS
5) FOR ADDITIONAL CONCRETE INFORMATION
REFER TO CUSTOMER'S SPECIFICATIONS
17B-18B-18
6) DECK FASTENERS - MILTI ESD 16 PBT DECKING PIN.
7) ALLOWABLE CONSTRUCTION LOAD 35 PSF



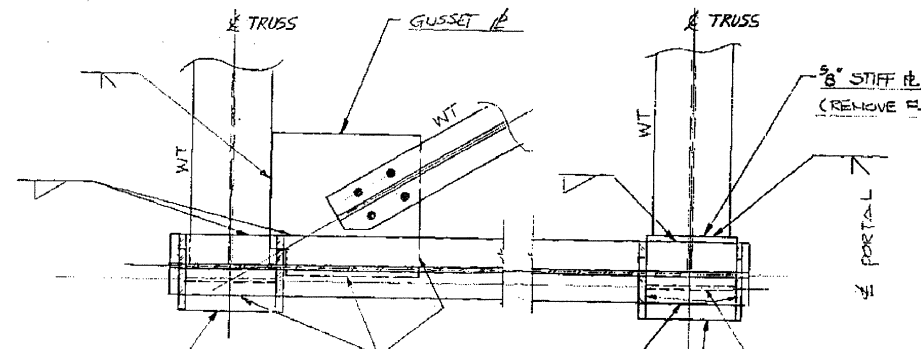
DECK FASTENING DETAIL



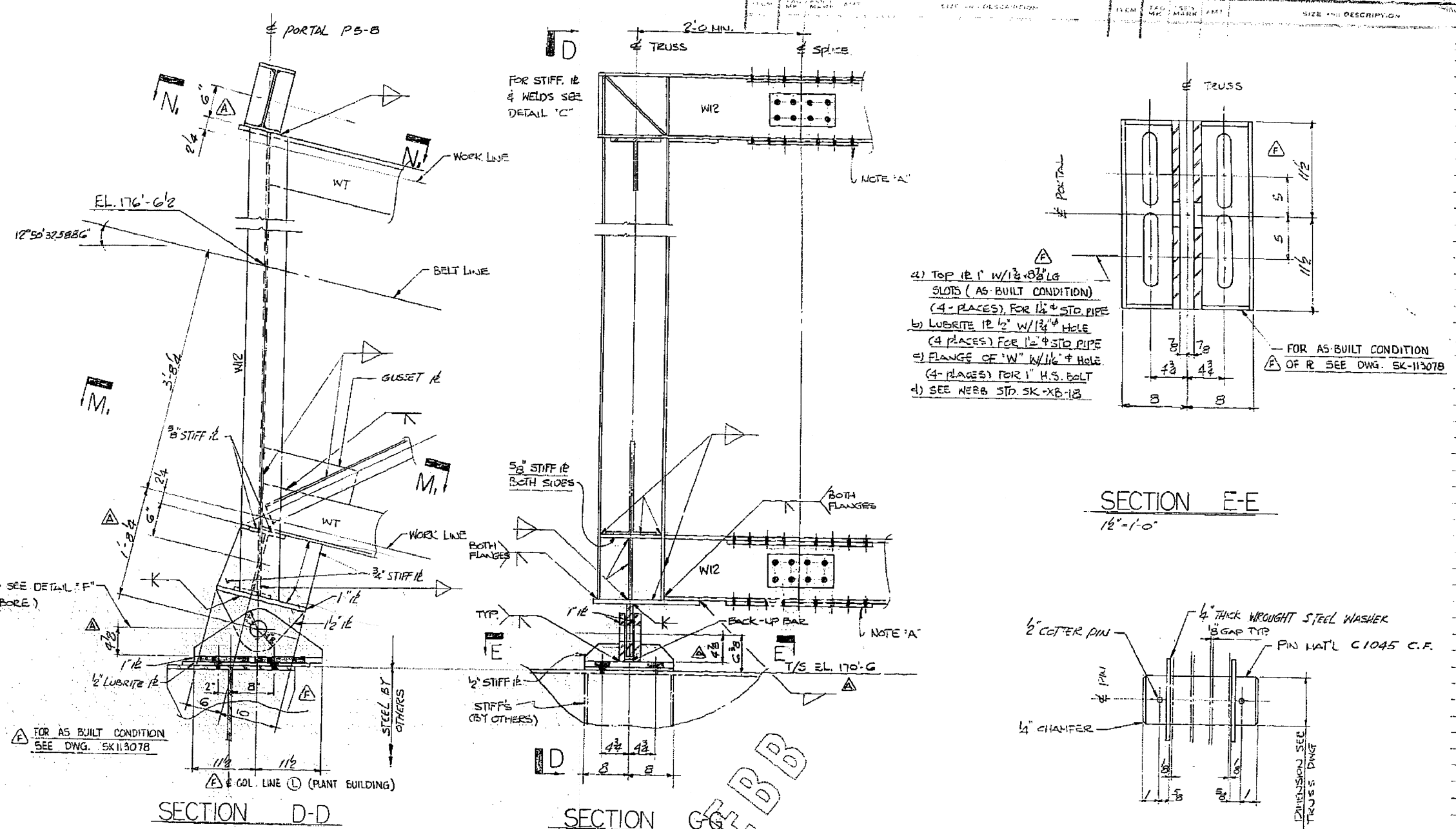
SECTION M-M
BOTTOM CHORD AT PORTAL



SECTION M-M
BOTTOM CHORD AT PORTAL

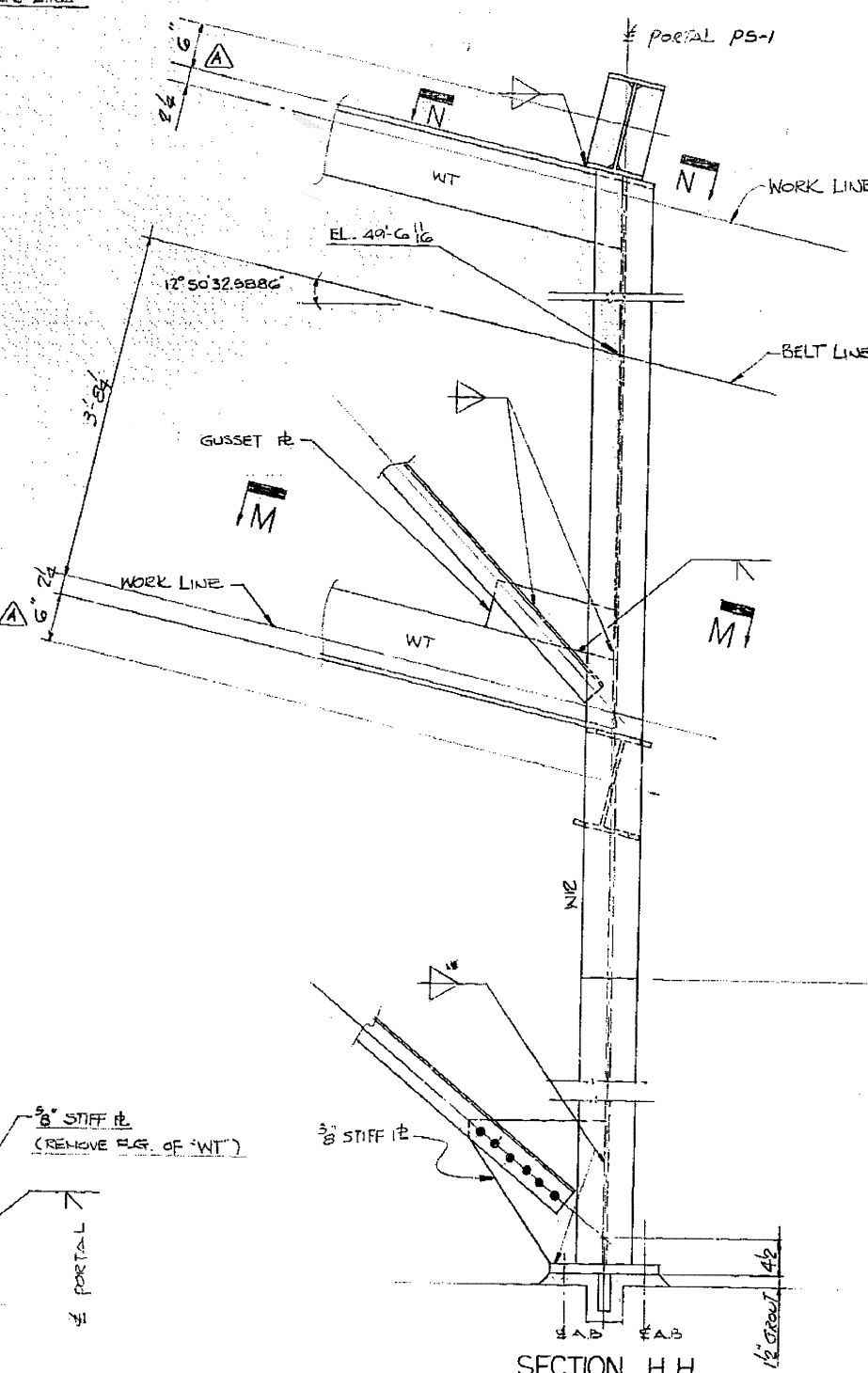


SECTION N-N
TOP CHORD AT PORTAL

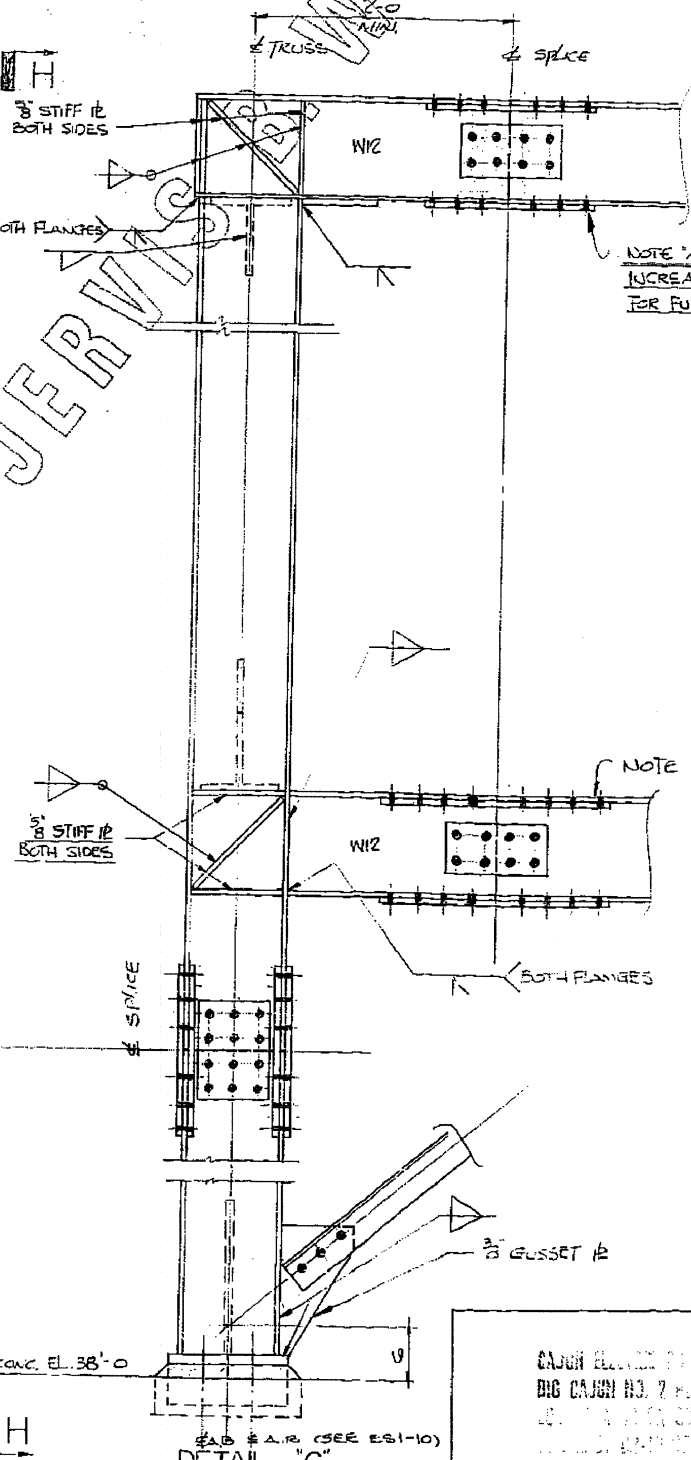


SECTION D-D

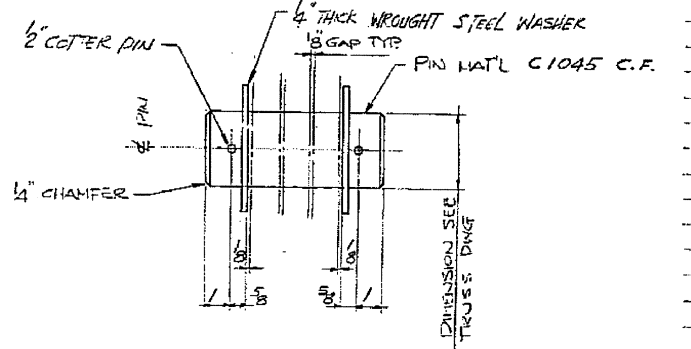
SECTION E-E
16'-0"



SECTION H-H



DETAIL C



DETAIL F
3'-1-0"

WORK THIS DRAWING WITH:
E51-6 ANCHOR BOLT AND FOUNDATION PLAN
FOR CONV. BEAMS BC-5A & BC-5B
E59-1 TRUSS T5-1 TO T5-2 FOR CONV. BEAMS BC-5A & BC-5B
E59-2 TRUSS T5-3 TO T5-4 FOR CONV. BEAMS BC-5A & BC-5B
E59-3 TRUSS T5-5 TO T5-6 FOR CONV. BEAMS BC-5A & BC-5B
E59-4 TRUSS T5-7 FOR CONV. BEAMS BC-5A & BC-5B
E59-5 BELTS B2 THROUGH-7 FOR CONV. BEAMS BC-5A & BC-5B
E59-6 PLANT TRANSFER TOWER ENTRY DETAILS
CONV. BEAMS BC-5A & BC-5B
E59-8 TYPICAL GALLERY CONNECTIONS FOR
CONV. BEAMS BC-5A & BC-5B
SK 113078 FIELD FIX OR HEAD END OF CONV. BEAM BC-5A & BC-5B

Checked for Design - 10/12/77 by SGL
Checked for Detail - 10/12/77 by SGL
10/12/77 SGL
10/12/77 SGL

BULK SYSTEMS
JERVIS B. WEBB CO.
DETROIT MICH 48244

CAJON ELECTRIC CO.
BIG CAJON RD. 7
BIG CAJON RD. 2
BIG CAJON RD. 3
BIG CAJON RD. 4
BIG CAJON RD. 5
BIG CAJON RD. 6
BIG CAJON RD. 7
BIG CAJON RD. 8
BIG CAJON RD. 9
BIG CAJON RD. 10
BIG CAJON RD. 11
BIG CAJON RD. 12
BIG CAJON RD. 13
BIG CAJON RD. 14
BIG CAJON RD. 15
BIG CAJON RD. 16
BIG CAJON RD. 17
BIG CAJON RD. 18
BIG CAJON RD. 19
BIG CAJON RD. 20

ENGINEER: W. MENSCH
IN CHARGE: W. MENSCH

NOTICE

1/10 (LUN) A.B. 8-31-77
B-34936-E
ES9-6F