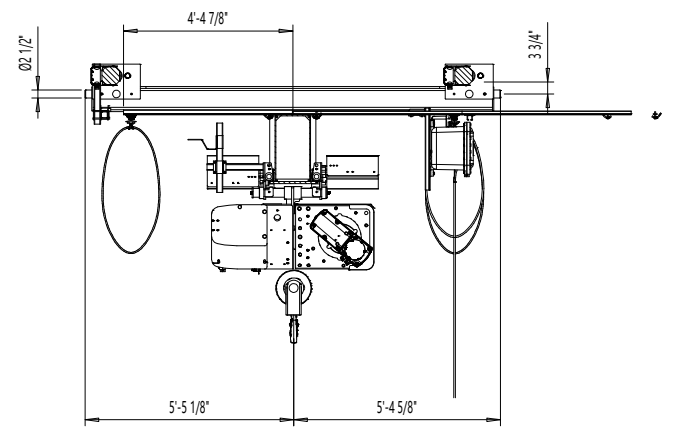
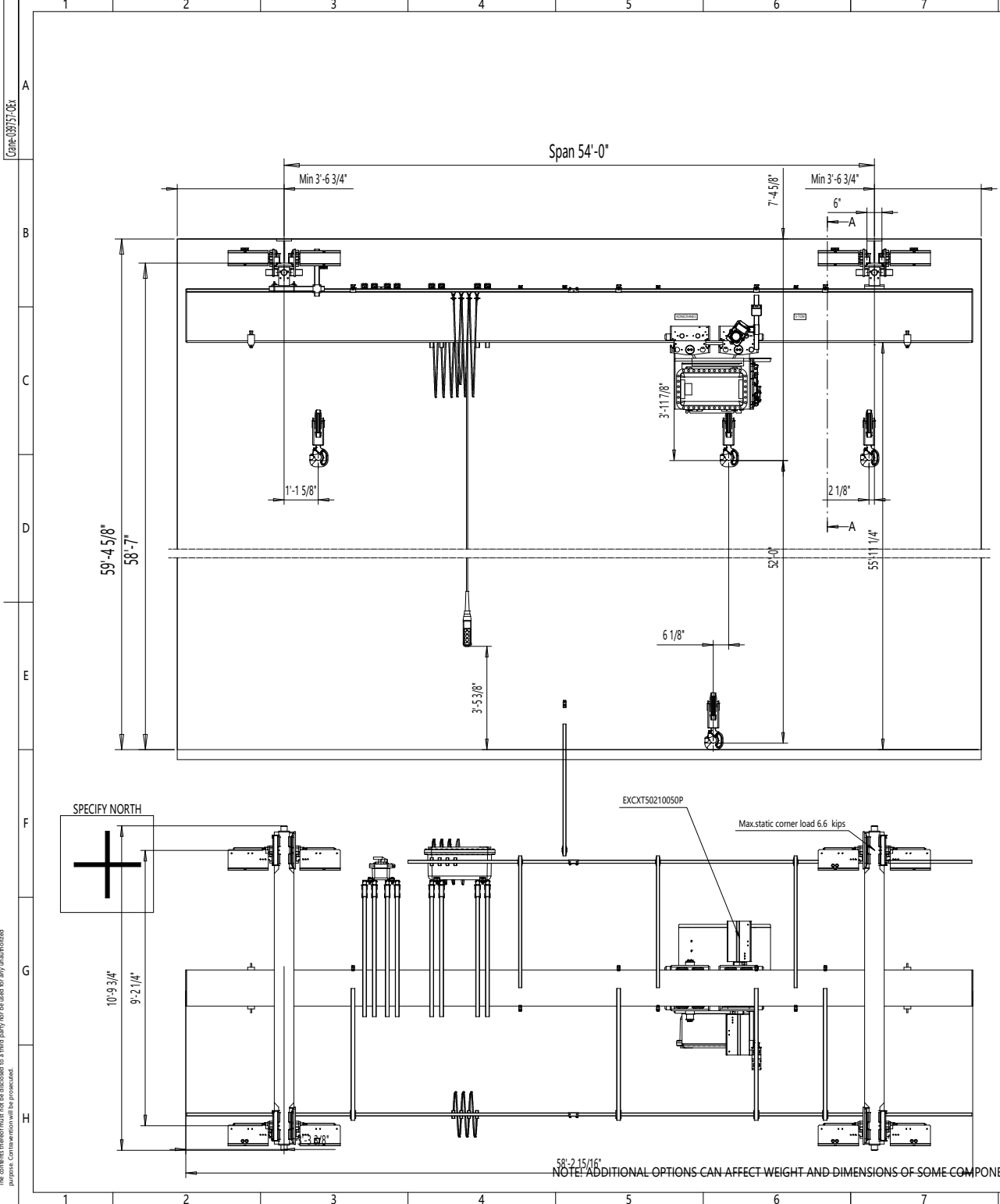


REV	CHANGE DESCRIPTION	ECN	DATE	REVISED BY	APPROVED BY
-----	--------------------	-----	------	------------	-------------



View A-A

PRELIMINARY



Marking :  
 Class I, Division 2, Groups B, C and D, T3 (Class I, Zone 2, IIB + H2, T3)  
 Ambient temperature : 14°...104° F

TECHNICAL DATA

Span	: 54'-0"
Load	: 5-TON
Lifting height	: 52'-0"
Hoisting speed	: 30.0/5.0 ft/min 2-speed
Traversing speed	: 80/20 ft/min 2-speed pole change
Travelling speed	: 100/25 ft/min 2-speed pole change
Weight of trolley	: 1810 lbs
Weight of bridge	: 7940 lbs
Crane classification	: CMAA Class C
Power supply	: 440 / 115 V; 60 Hz

SURFACE TREATMENT OF CRANE

Bridge color	: RAL1028
Paint	: ENA/127 μm
Access to crane and certain maintenance items is via man lift	
Outdoor Use crane	
Pendant controlled crane: movable	

ACCEPTED BY:

COMPANY:	Pos	Amount	Description	Specification		
		KSA/PGS		Chd	Appd	Ref drawing
		04/18	Date	CXTU EX 5-TON x 19.7ft Hol:52.01ft		
		Markman Support	Dept			
DATE:	5/21/16		KONECRANES			
	NOTE: ADDITIONAL OPTIONS CAN AFFECT WEIGHT AND DIMENSIONS OF SOME COMPONENTS.		Crane-039757-OEx			

This document is the absolute property of Konecranes, Inc. This document must not be copied, reproduced, or disseminated in any form without the written permission of Konecranes, Inc. or its parent company KONECORP. The contents hereof must not be disclosed to a third party nor be used for any unauthorized purposes. Contact your Konecranes representative for more information.