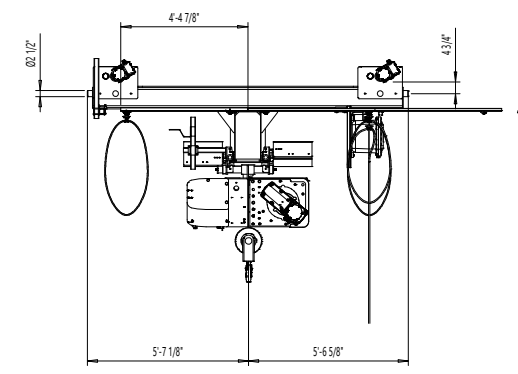
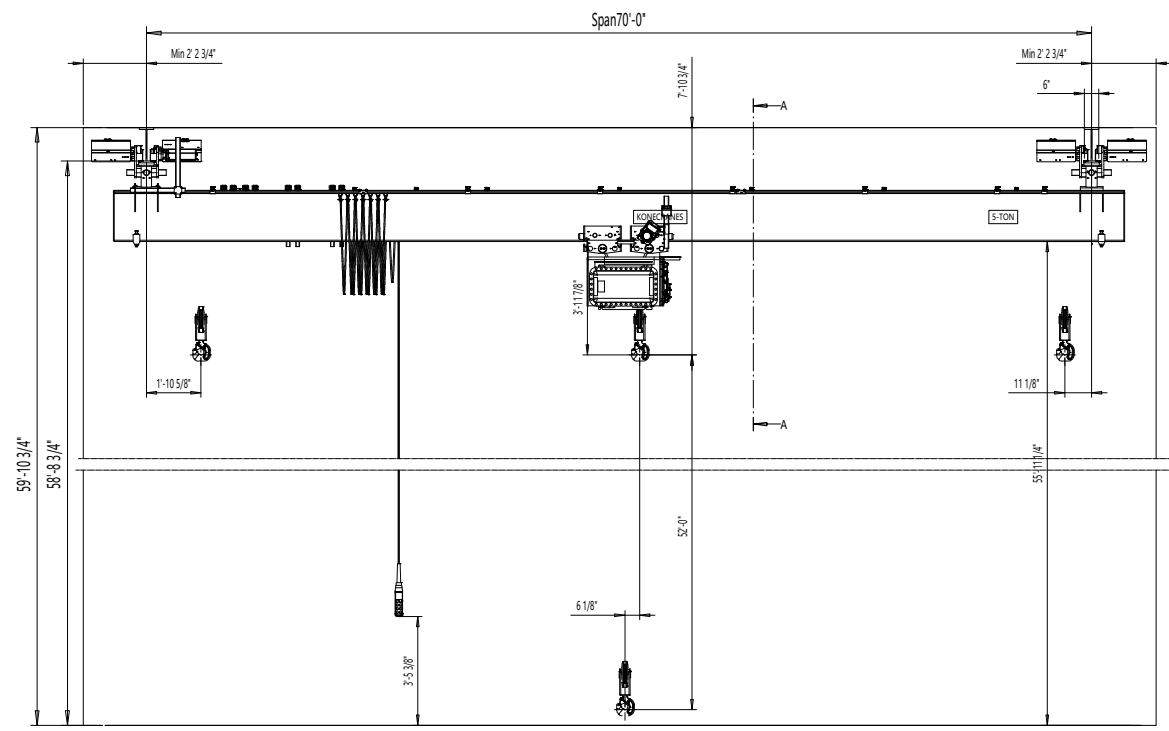


REV	CHANGE DESCRIPTION	ECN	DATE	REVISED BY	APPROVED BY
-----	--------------------	-----	------	------------	-------------

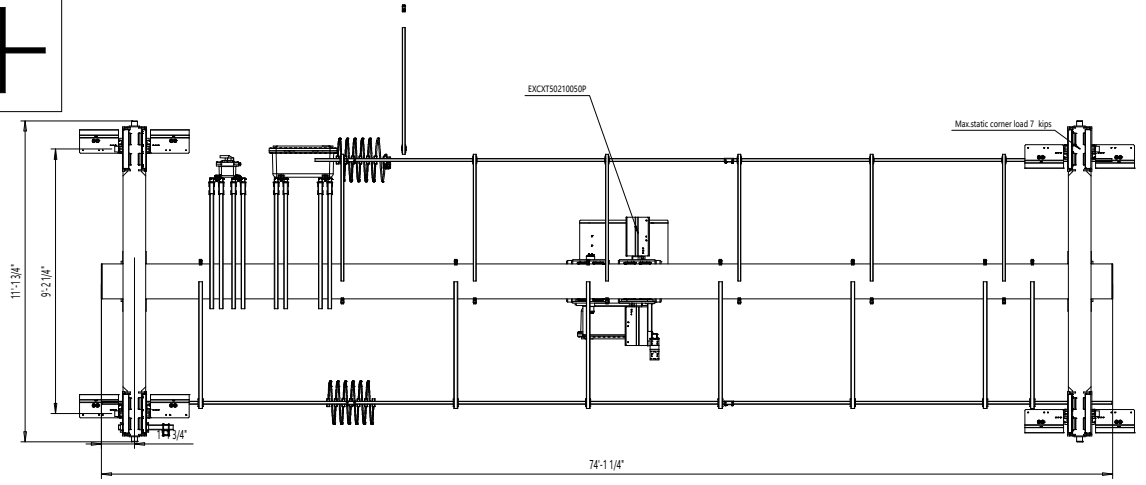
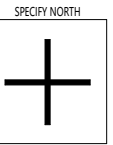


View A-A

PRELIMINARY



Marking :
 Class 1, Division 2, Groups B, C and D, T3 (Class 1, Zone 2, IIB + H2, T3)
 Ambient temperature : 14°...104° F



TECHNICAL DATA

Span	: 70'-0"
Load	: 5-TON
Lifting height	: 52'-0"
Hoisting speed	: 30.0/5.0 ft/min 2-speed
Traversing speed	: 80/20 ft/min 2-speed pole change
Travelling speed	: 100/25 ft/min 2-speed pole change
Weight of trolley	: 1810 lbs
Weight of bridge	: 12566 lbs
Crane classification	: CMAA Class C
Power supply	: 440 / 115 V; 60 Hz

SURFACE TREATMENT OF CRANE

Bridge color	: RAL1028
Paint	: ENA/127 μm
Access to crane and certain maintenance items is via man lift	
Outdoor Use crane	
Pendant controlled crane: movable	

ACCEPTED BY:

COMPANY:	Desig:	CXTU EX 5-TON x 32.8ft HoI:52.01ft	1:40
	Date:		
	Markman Support:		
	Dept:		
DATE:	KONECRANES		Crane-039756-OEx

NOTE! ADDITIONAL OPTIONS CAN AFFECT WEIGHT AND DIMENSIONS OF SOME COMPONENTS.

This document is the intellectual property of Konecranes, Inc. This document must not be copied, reproduced, or disseminated in any form without the written permission of Konecranes, Inc. or its parent company, KONECORPORATION. Konecranes, Inc. reserves the right to change the design of the crane without notice. All dimensions are in feet and inches.