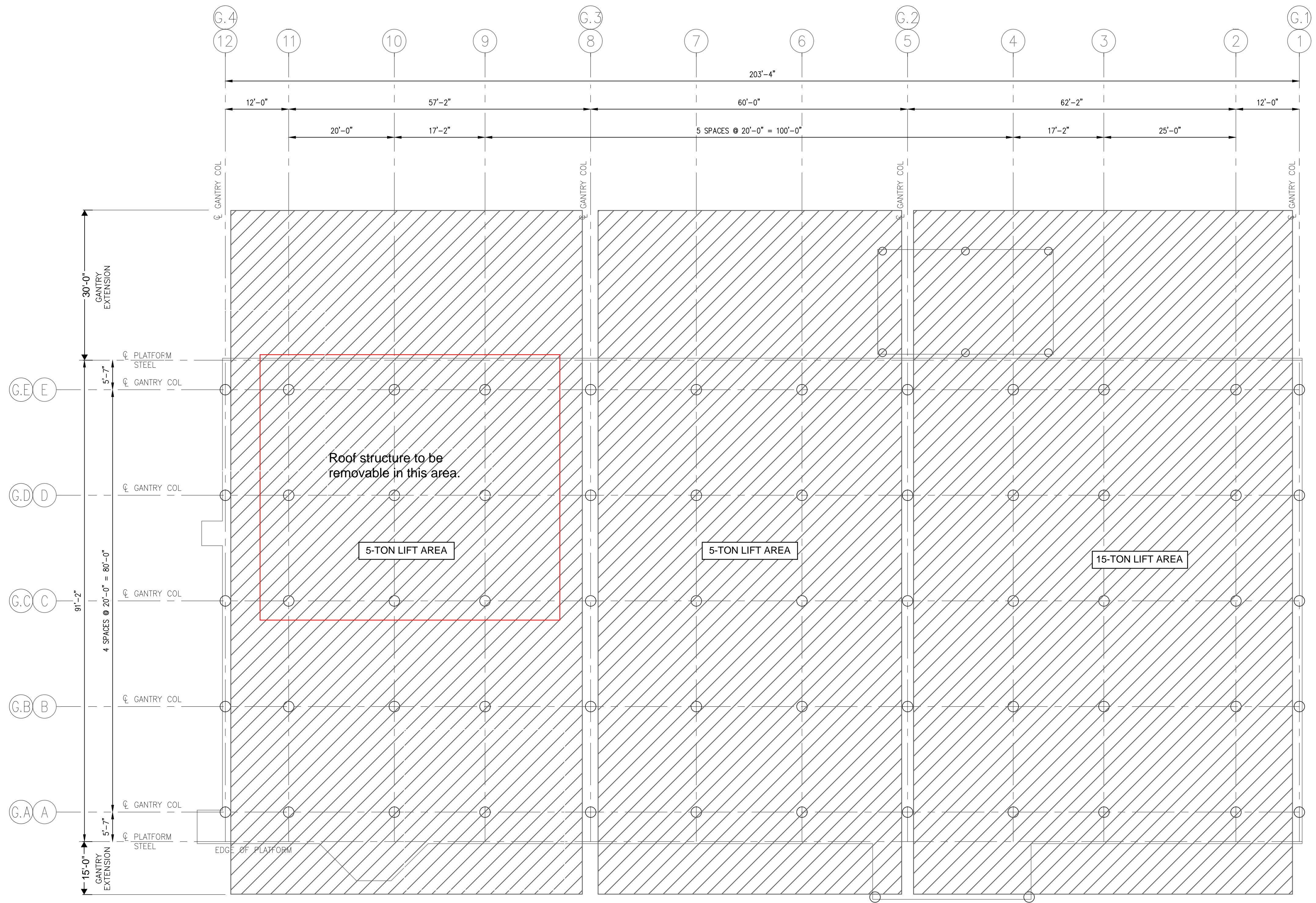




WATER SIDE



LAND SIDE

PROPOSED GANTRY LAYOUT
SCALE: NTS

PRELIMINARY
FOR COORDINATION PURPOSES ONLY
PROFESSIONAL ENGINEER: JASON BURGE
LA LICENSE NO.: 0038149
FIRM: AUDUBON COMPANIES
FIRM LIC. NO.: 5005

										AMBERJACK/MARS OFFSHORE CRUDE										STRUCTURAL									
										FOURCHON JUNCTION										PROPOSED GANTRY LAYOUT									
										<small>THIS DOCUMENT IS CONFIDENTIAL AND IT SHALL NOT BE REPRODUCED OR REDISTRIBUTED WITHOUT PRIOR PERMISSION. NEITHER THE OPERATOR NOR THE OWNER MAKE ANY WARRANTY AS TO THE CORRECTNESS OR COMPLETENESS OF THE INFORMATION CONTAINED ON THIS DRAWING, AND THE USER ASSUMES ALL RISK OF LOSS TO PERSONS AND PROPERTY AS A RESULT OF RELIANCE THEREON.</small>										FOURCHON JUNCTION RAISED FACILITY									
REV NO.	DATE	DESCRIPTION OF REVISION	ES. NO.	BY	ELEC ENGR	MECH ENGR	APP	A	REV NO.	DATE	DESCRIPTION OF REVISION	ES. NO.	BY	NG	ELEC ENGR	MECH ENGR	APP	DATE	09/08/23	DRAWN	NMG	SPLC-GOM-AJ-SK028	REV.	A					