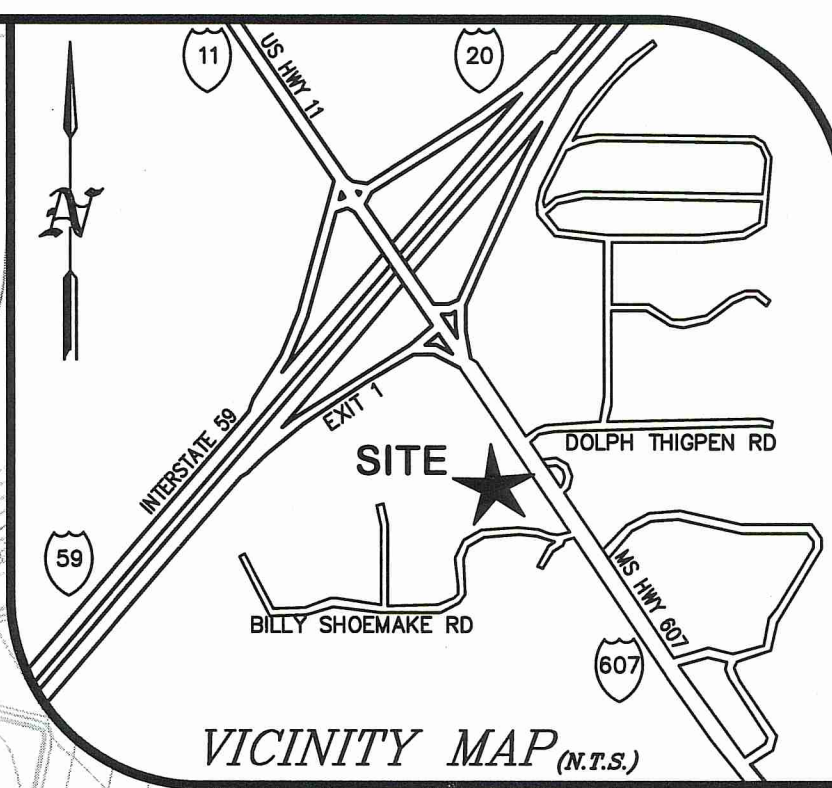
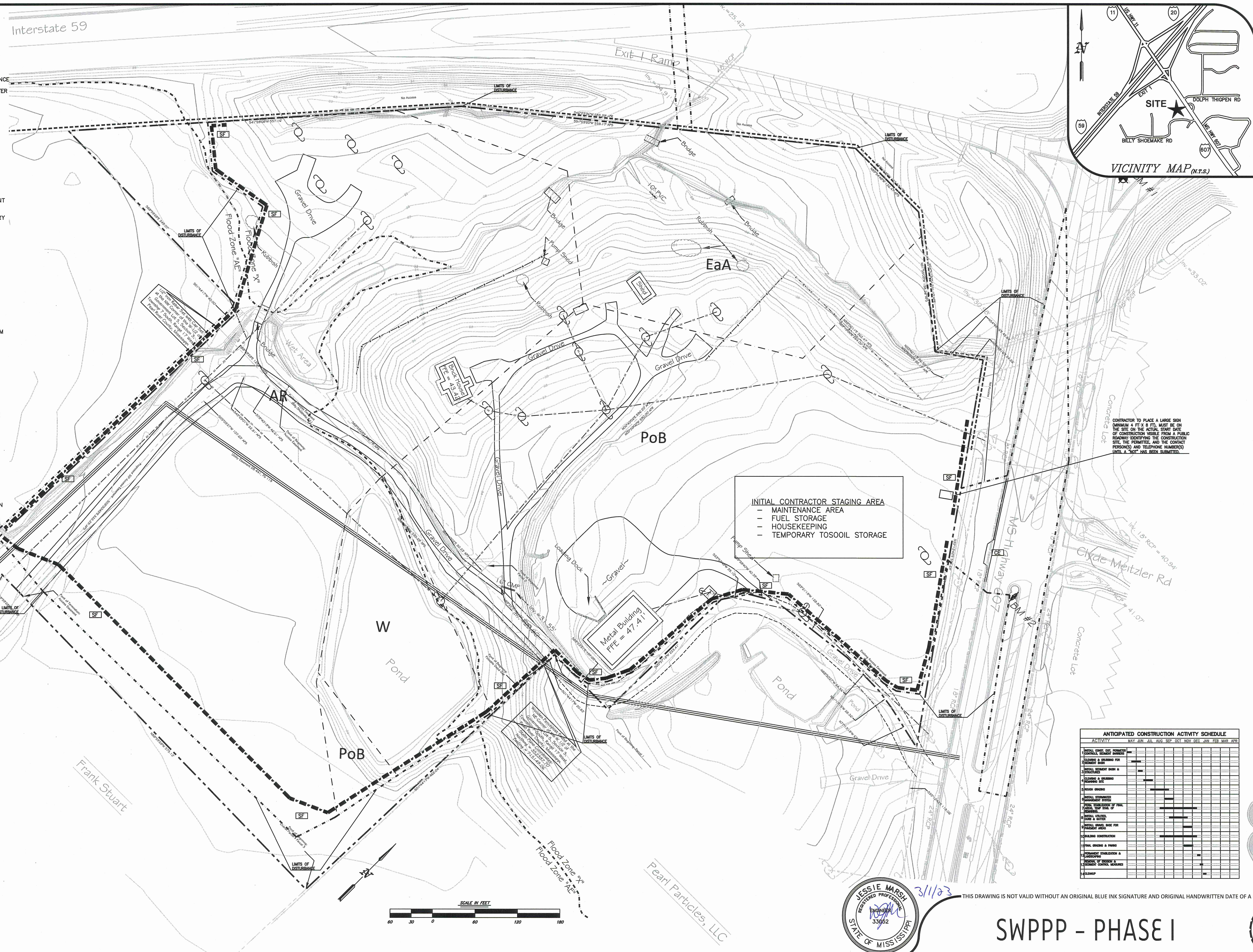


**LEGEND FOR PROPOSED IMPROVEMENTS**

- PROPERTY LINE / R.O.W.
- PROPOSED BUILDING
- PROPOSED TYPE III SILT FENCE
- PROPOSED CURB AND GUTTER
- LIMITS OF DISTURBANCE
- PROPOSED INLET
- PROPOSED CURB INLET
- PROPOSED STORM SEWER
- INLET PROTECTION
- STORM DRAIN OUTLET PROTECTION
- STABILIZATION - SOD
- STABILIZATION - PERMANENT VEGETATION
- STABILIZATION - TEMPORARY VEGETATION
- FAIRCLOTH SKIMMER
- SEDIMENT BASIN
- CONSTRUCTION ENTRANCE
- ROCK CHECK DAM
- AR** ARKABUTLA-ROSEBLOOM ASSOCIATION
- EaA** ESCAMBIA FINE SANDY LOAM
- PoB** POARCH LOAM

- EXISTING LEGEND**
- SUBJECT PROPERTY BOUNDARY LINE
  - ADJACENT BOUNDARY LINES
  - OLD WIRE FENCE
  - "40" LINES
  - LIMITS OF EASEMENT
  - BURIED FIBER OPTIC LINE
  - OVERHEAD UTILITY LINES
  - MAJOR CONTOUR
  - MINOR CONTOUR
  - DRAINAGE PIPE
  - SIGNIFICANT DRAINAGE FLOWLINE
  - APPROXIMATE FLOOD ZONE LOCATION
  - NO HIGHWAY ACCESS
  - PAINT STRIPE
  - 
  - IRON PIN FOUND
  - FENCE CORNER FOUND
  - UTILITY POLE
  - AS PER SURVEY
  - AS PER RECORD
  - RIGHT-OF-WAY
  - CONTOUR ELEVATION
  - REINFORCED CONCRETE PIPE
  - CORRUGATED METAL PIPE
  - ROAD SIGN POST

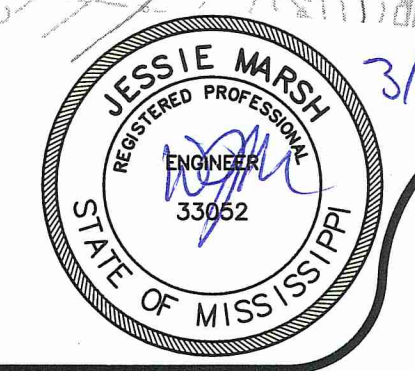
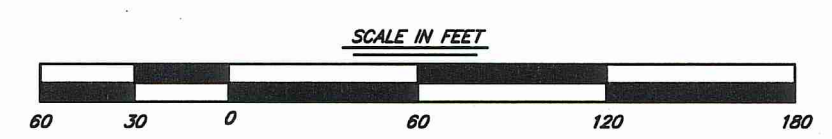


CONTRACTOR TO PLACE A LARGE SIGN (MINIMUM 4 FT X 9 FT) MUST BE ON THE SITE ON THE ACTUAL START DATE OF CONSTRUCTION VISIBLE FROM A PUBLIC ROADWAY IDENTIFYING THE CONSTRUCTION SITE, THE PERMITTEE, AND THE CONTACT PERSON(S) AND TELEPHONE NUMBER(S) UNTIL A "NOT" HAS BEEN SUBMITTED.

**INITIAL CONTRACTOR STAGING AREA**  
 - MAINTENANCE AREA  
 - FUEL STORAGE  
 - HOUSEKEEPING  
 - TEMPORARY TOSOIL STORAGE

**ANTICIPATED CONSTRUCTION ACTIVITY SCHEDULE**

ACTIVITY	MAY	JUN	JUL	AUG	SEP	OCT	NOV	DEC	JAN	FEB	MAR	APR
1. METAL CONCRETE FOUNDATION												
2. GENERAL GRADING												
3. STORM DRAIN												
4. STABILIZATION												
5. CONSTRUCTION ENTRANCE												
6. STABILIZATION												
7. STABILIZATION												
8. STABILIZATION												
9. STABILIZATION												
10. STABILIZATION												
11. STABILIZATION												
12. STABILIZATION												
13. STABILIZATION												
14. STABILIZATION												
15. STABILIZATION												
16. STABILIZATION												
17. STABILIZATION												
18. STABILIZATION												
19. STABILIZATION												
20. STABILIZATION												



THIS DRAWING IS NOT VALID WITHOUT AN ORIGINAL BLUE INK SIGNATURE AND ORIGINAL HANDWRITTEN DATE OF A LICENSED PROFESSIONAL ENGINEER.

**SWPPP - PHASE I**

**C4.1**

RC 200325  
 File: 200325.rvt  
 Drawn: DMT  
 Date: 03-01-2023

**RESOURCECONSULTING**  
 CIVIL ENGINEERING  
 6700 Jefferson Highway - Resource Suite 4A  
 Baton Rouge, Louisiana 70806  
 ResourceConsulting@hotmail.com  
 Tel: (225) 761-9909, Fax (225) 766-6672

**LOVE'S TRAVEL STOP**  
 INTERSTATE 59 EXIT 1 @ MS HIGHWAY 607  
 PEARL RIVER COUNTY, MISSISSIPPI



K:\200325 - Pearl River County MS Love's 1-59 @ MS Hwy 607 SWPPP Design\200325.rvt design.dwg, C4.1 SWPPP PHASE I, 3/1/2023 4:35:40 PM, Jessie, Resource Consulting, LLC copyright.

