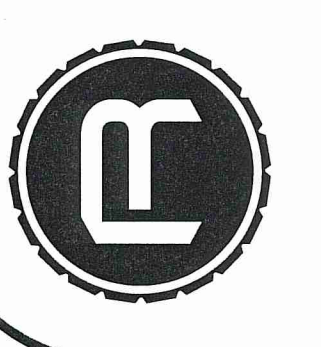
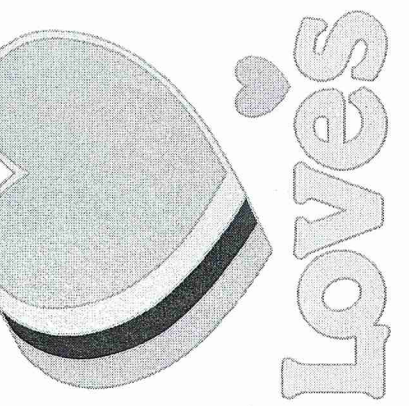




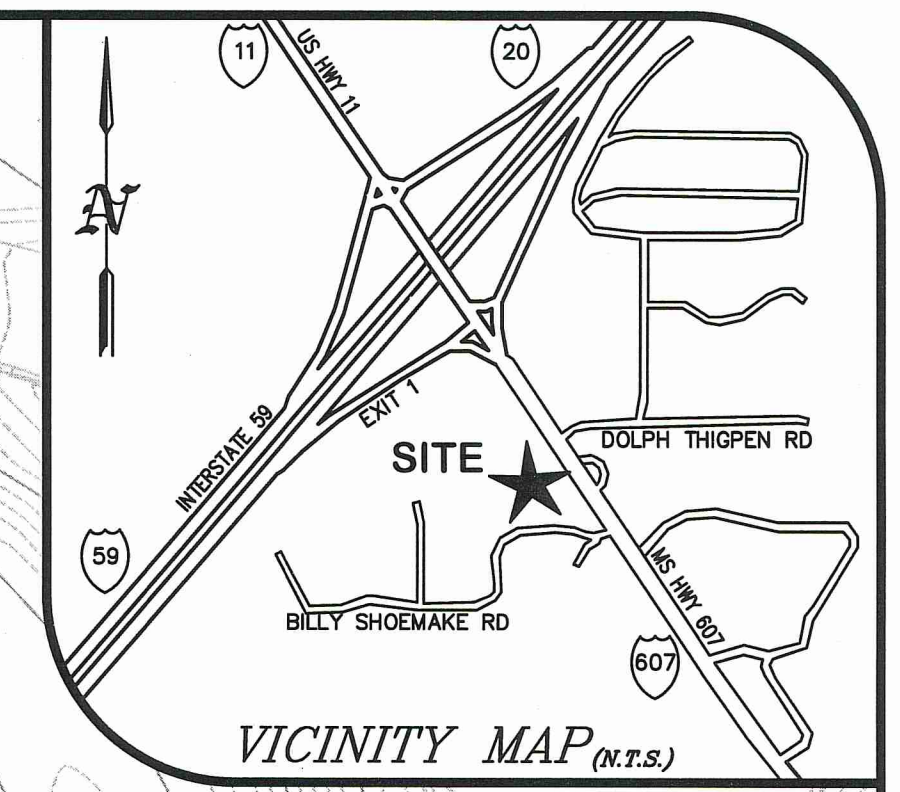
RESOURCECONSULTING
CIVIL ENGINEERING
6700 Jefferson Highway - Resource Suite 4A
Baton Rouge, Louisiana 70806
Resourceconsulting@hotmail.com
Tel: (225) 761-9909, Fax (225) 766-6672



LOVE'S TRAVEL STOP
INTERSTATE 59 EXIT 1 @ MS HIGHWAY 607
PEARL RIVER COUNTY, MISSISSIPPI



C7.0

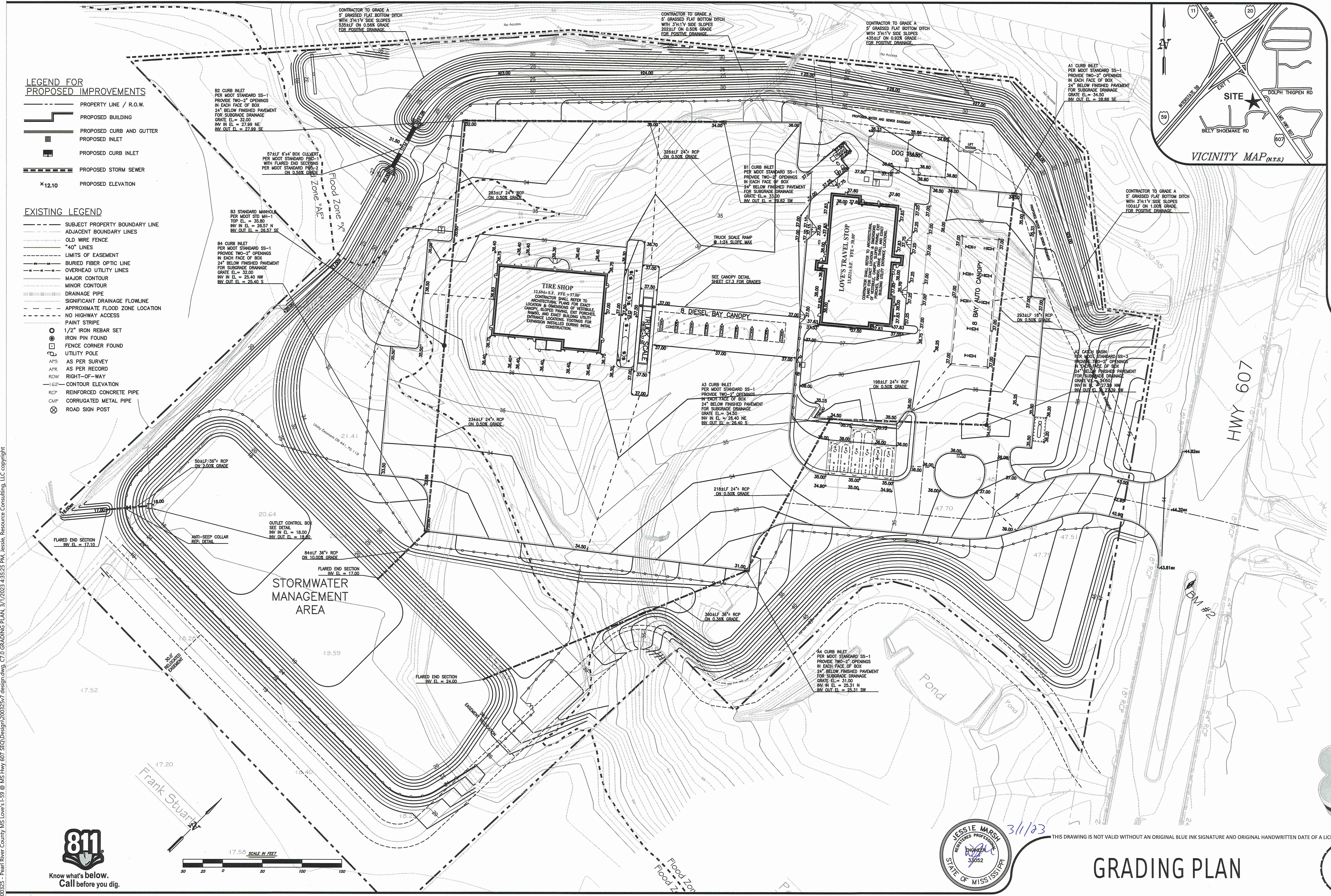


LEGEND FOR PROPOSED IMPROVEMENTS

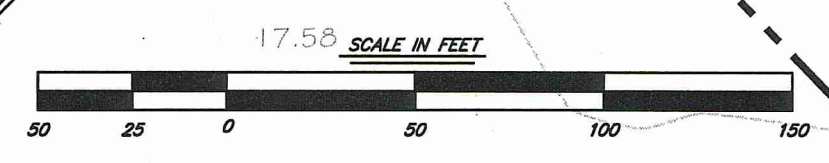
- PROPERTY LINE / R.O.W.
- PROPOSED BUILDING
- PROPOSED CURB AND GUTTER
- PROPOSED INLET
- PROPOSED CURB INLET
- PROPOSED STORM SEWER
- *12.10 PROPOSED ELEVATION

EXISTING LEGEND

- SUBJECT PROPERTY BOUNDARY LINE
- ADJACENT BOUNDARY LINES
- OLD WIRE FENCE
- "40" LINES
- LIMITS OF EASEMENT
- BURIED FIBER OPTIC LINE
- OVERHEAD UTILITY LINES
- MAJOR CONTOUR
- MINOR CONTOUR
- DRAINAGE PIPE
- SIGNIFICANT DRAINAGE FLOWLINE
- APPROXIMATE FLOOD ZONE LOCATION
- NO HIGHWAY ACCESS
- PAINT STRIPE
-
- IRON PIN FOUND
- FENCE CORNER FOUND
- UTILITY POLE
- AS PER SURVEY
- AS PER RECORD
- RIGHT-OF-WAY
- CONTOUR ELEVATION
- RCP REINFORCED CONCRETE PIPE
- CMP CORRUGATED METAL PIPE
- ROAD SIGN POST



K:\200325 - Pearl River County MS Love's L-59 @ MS Hwy 607 SEQ\Design\200325v7 design.dwg, C7.0 GRADING PLAN, 3/17/2023 4:52:25 PM, Jessie, Resource Consulting, LLC copyright.



THIS DRAWING IS NOT VALID WITHOUT AN ORIGINAL BLUE INK SIGNATURE AND ORIGINAL HANDWRITTEN DATE OF A LICENSED PROFESSIONAL ENGINEER.

GRADING PLAN