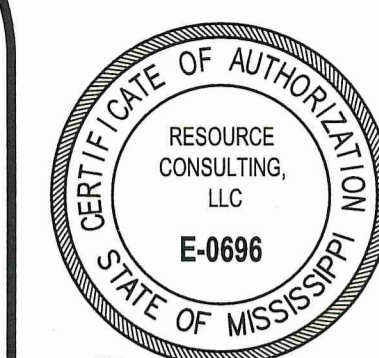


NICHOLSON WATER AND SEWER ASSOCIATION UTILITY EXTENSIONS AND LIFT STATION PEARL RIVER COUNTY, MS

SHEET INDEX:

- U1.0 COVER SHEET
- U1.1 UTILITY EXTENSION OVERVIEW
- U1.2 NOTES
- U1.3 GENERAL DETAILS
- U2.1 WATER MAIN EXTENSION
- U2.2 WATER MAIN EXTENSION
- U2.3 WATER MAIN EXTENSION
- U2.4 WATER MAIN EXTENSION
- U2.5 WATER MAIN EXTENSION
- U2.6 WATER MAIN DETAILS
- U3.1 LIFT STATION SITE PLAN
- U3.2 LIFT STATION DETAILS
- U3.3 LIFT STATION DETAILS
- U3.4 LIFT STATION DETAILS
- U3.5 LIFT STATION DETAILS
- U4.1 FORCE MAIN EXTENSION
- U4.2 FORCE MAIN EXTENSION
- U4.3 FORCE MAIN EXTENSION
- U4.4 FORCE MAIN EXTENSION
- U4.5 FORCE MAIN EXTENSION
- U4.6 FORCE MAIN EXTENSION
- U4.7 FORCE MAIN EXTENSION
- U4.8 FORCE MAIN EXTENSION
- U4.9 FORCE MAIN EXTENSION
- U4.10 FORCE MAIN EXTENSION
- U4.11 FORCE MAIN EXTENSION
- U4.12 FORCE MAIN EXTENSION
- U4.13 FORCE MAIN EXTENSION
- U5.1 PUBLIC SEWER EXTENSION



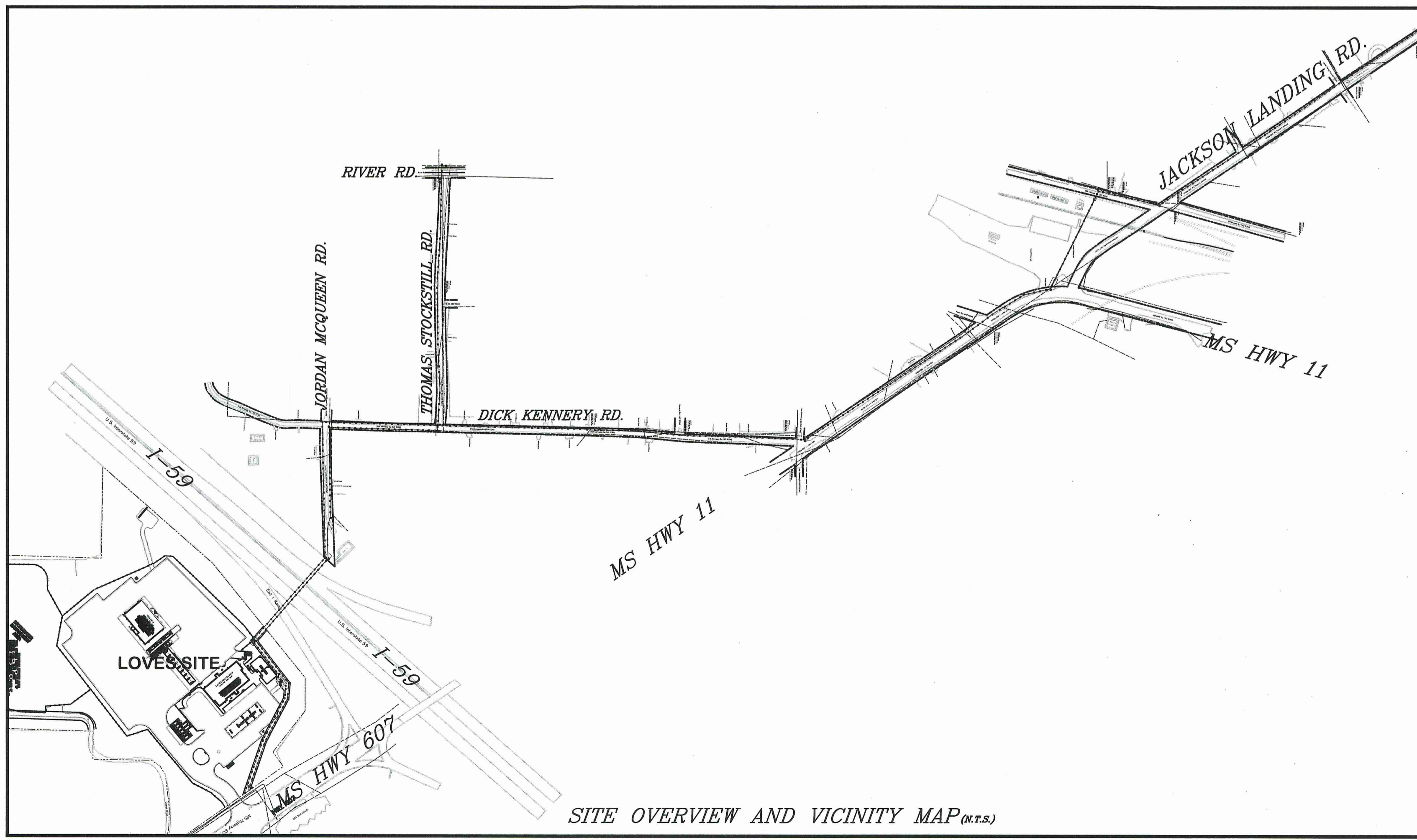
RESOURCE CONSULTING
CIVIL ENGINEERING
6700 Jefferson Highway - Resource Suite 4A
Baton Rouge, Louisiana 70806
ResourceConsulting@hotmail.com
Tel: (225) 761-9909, Fax: (225) 766-6672



J. Marsh 3/1/23

approval stamp

REVISION TRACKING TABLE		
REV.	DATE	REASON



**NICHOLSON WATER AND
SEWER ASSOCIATION**
INTERSTATE 59 EXIT 1 @ MS HWY 607
PEARL RIVER COUNTY, MISSISSIPPI

NOTES:
1. THE SITWORK FOR THIS PROJECT SHALL MEET OR EXCEED THE SITWORK SPECIFICATIONS.
2. ALL NECESSARY INSPECTIONS AND/OR CERTIFICATIONS REQUIRED BY CODES AND/OR UTILITY SERVICE COMPANIES SHALL BE PERFORMED PRIOR TO ANNOUNCED BUILDING POSSESSION AND THE FINAL CONNECTION OF SERVICES.