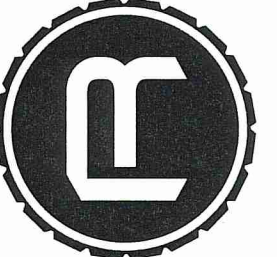
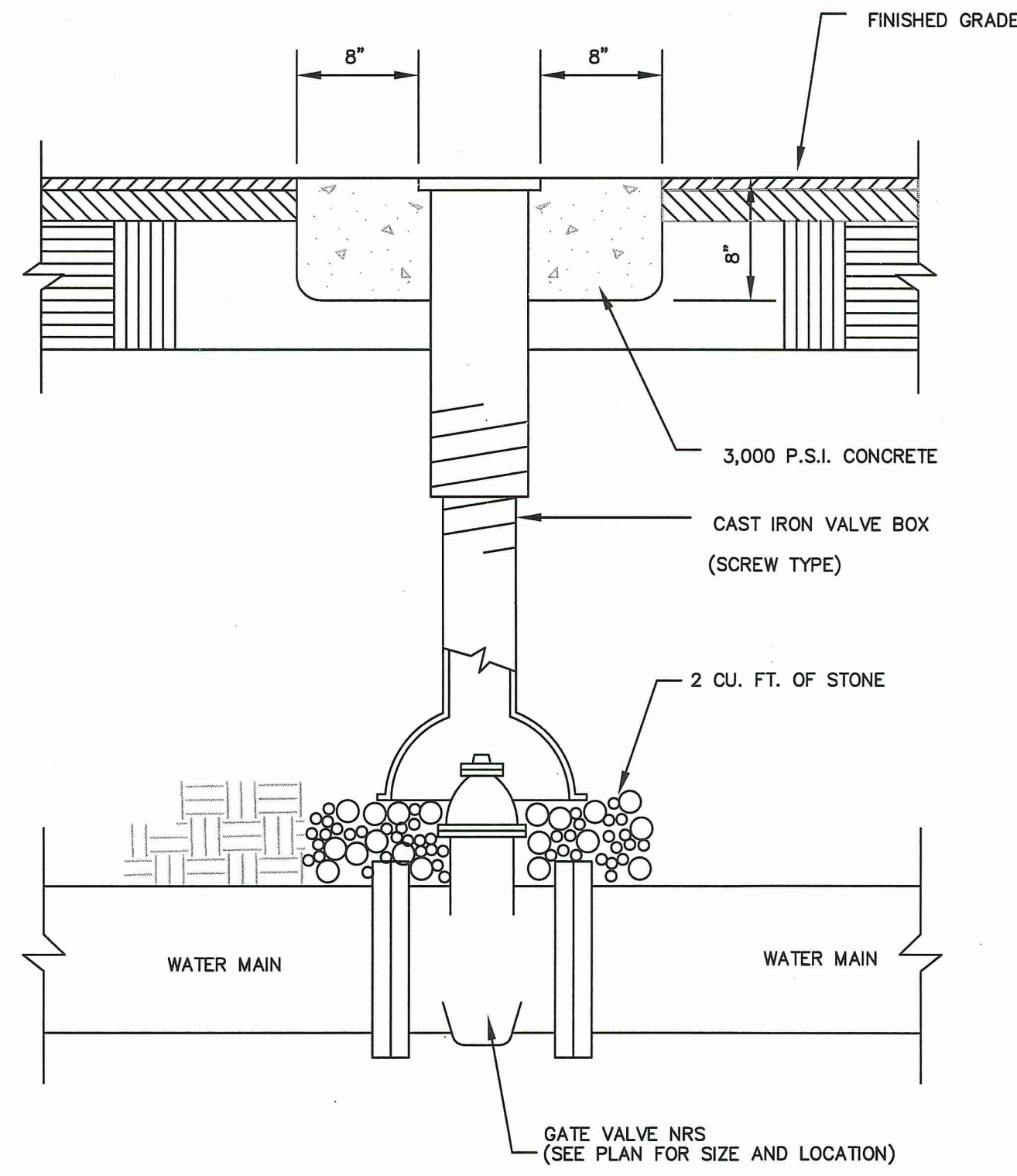




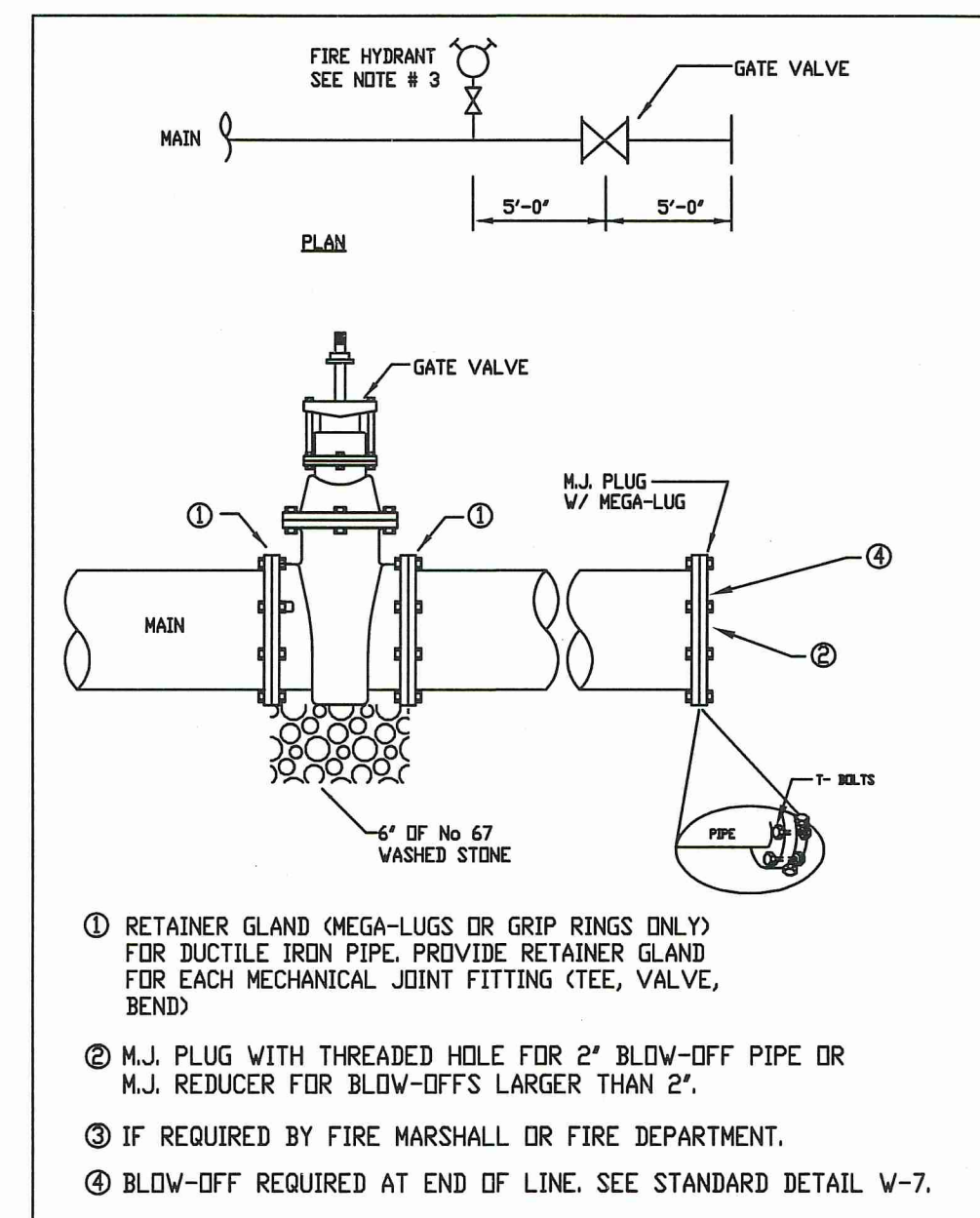
**RESOURCE CONSULTING**  
 CIVIL ENGINEERING  
 6700 Jefferson Highway - Resource Suite 4A  
 Baton Rouge, Louisiana 70806  
 ResourceConsulting@hotmail.com  
 Tel: (225) 761-9909, Fax: (225) 766-6672



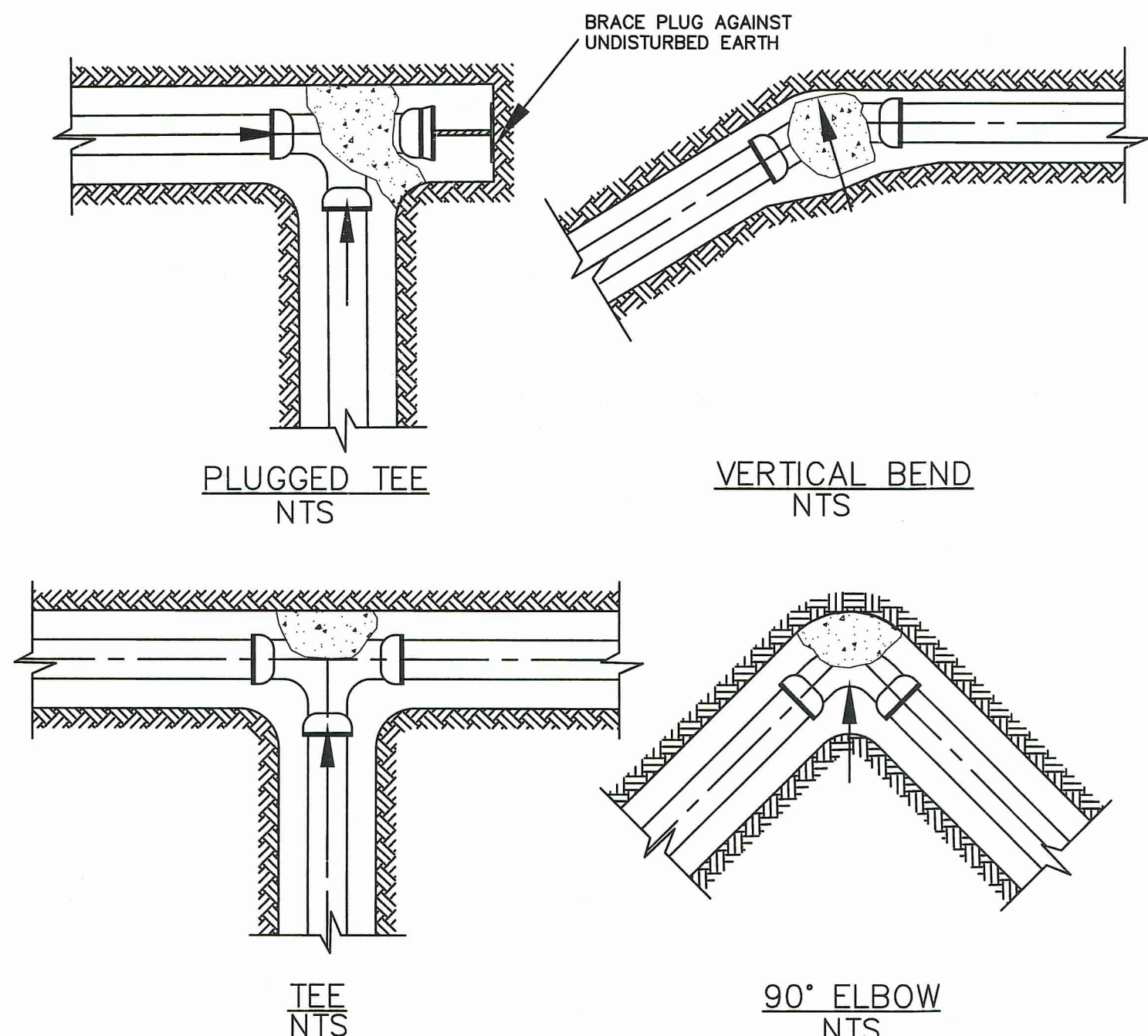
**NICHOLSON WATER AND SEWER ASSOCIATION**  
 INTERSTATE 59 EXIT 1 @ MS HWY 607  
 PEARL RIVER COUNTY, MISSISSIPPI



**VALVE BOX SETTING**  
 N.T.S.



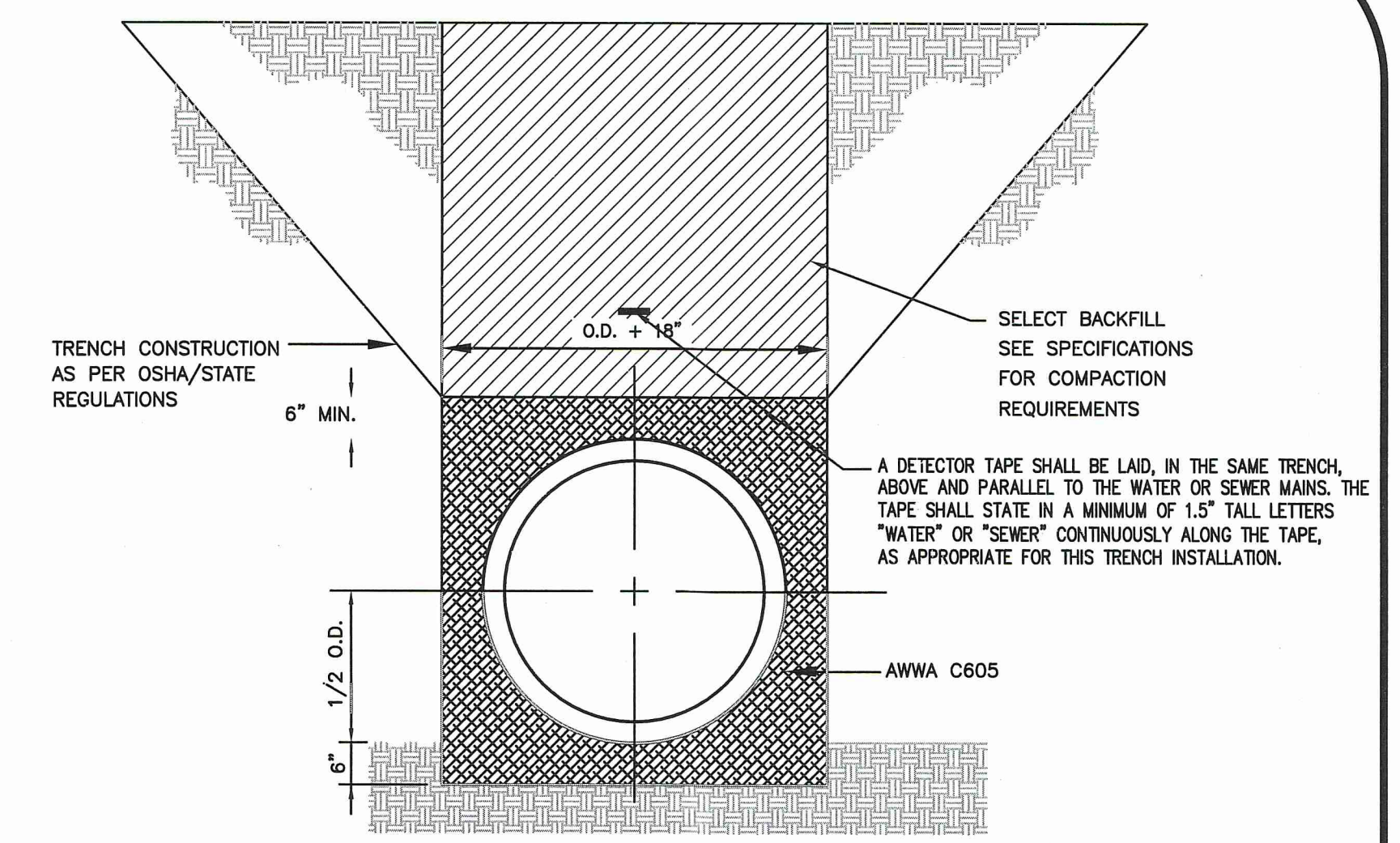
**WATER SYSTEMS**  
 NOT TO SCALE  
 STANDARD V-6



PROVIDE MINIMUM BEARING AREA IN S.F. AS FOLLOWS BASED ON 150 PSI TEST PRESSURE AND 2000 PSF SCH. BEARING (UNLESS OTHERWISE DETAILED)

PIPE SIZE	TEE DEADENDS	11 1/4\"/>			
4"	1.0	0.5	0.5	0.8	1.3
6"	2.2	0.5	0.8	1.5	3.0
8"	3.8	0.8	1.5	2.9	5.3
10"	6.0	1.2	2.3	4.5	8.4
12"	8.5	1.7	3.3	6.5	12.1
14"	11.5	2.3	4.5	8.9	16.4
16"	15.2	3.0	5.8	11.5	21.4

**THRUST BLOCK DETAIL**  
 N.T.S.



- NOTES:
1. BEDDING MATERIALS SHALL CONFORM TO AWWA C605 (MAXIMUM EMBEDMENT PARTICLE SIZE SHALL NOT EXCEED 3/4 INCH FOR ANGULAR ROCK OR 1.5 INCH FOR ROUNDED ROCK)
  2. HAUNCH MATERIALS SHALL BE CLASS I, II, OR III PER D-2321, TABLE 2.
  3. INITIAL BACKFILL MATERIALS SHALL BE CLASS I, II, OR III MATERIALS AS REQUIRED ABOVE, RESTRICTED AS PER ASTM D-2321, TABLE 2.
  4. MINIMUM TRENCH WIDTHS (AS REQUIRED BY ASTM D-2321), ARE AS FOLLOWS:

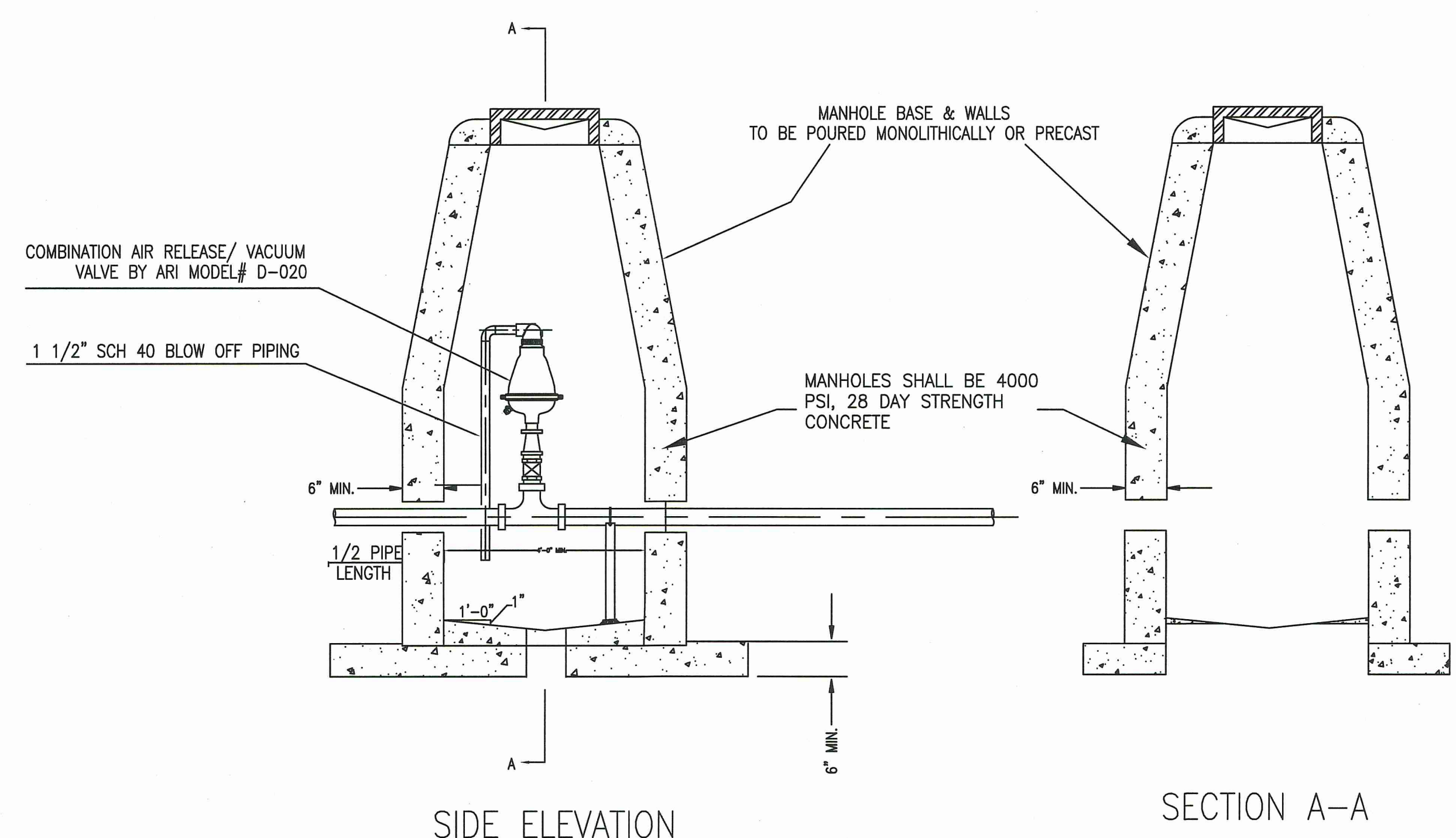
INSIDE DIAMETER	MIN. TRENCH
8"	25"
10"	27"
12"	30"
18"	34"
18"	38"
24"	46"
30"	55"
36"	63"
42"	72"
48"	80"

A LESSER TRENCH WIDTH WILL BE PERMITTED ONLY WHERE IT IS DETERMINED THE CONTRACTOR CAN UTILIZE EQUIPMENT CAPABLE OF MEETING THE REQUIRED INSTALLATION DENSITIES.

5. WHERE THE TRENCH BOTTOM IS UNSTABLE, CONTRACTOR SHALL EXCAVATE TO A DEPTH AS REQUIRED BY THE ENGINEER AND REPLACE AS AN ALTERNATE, TRENCH BOTTOM MAY BE STABILIZED USING A GEOTEXTILE.

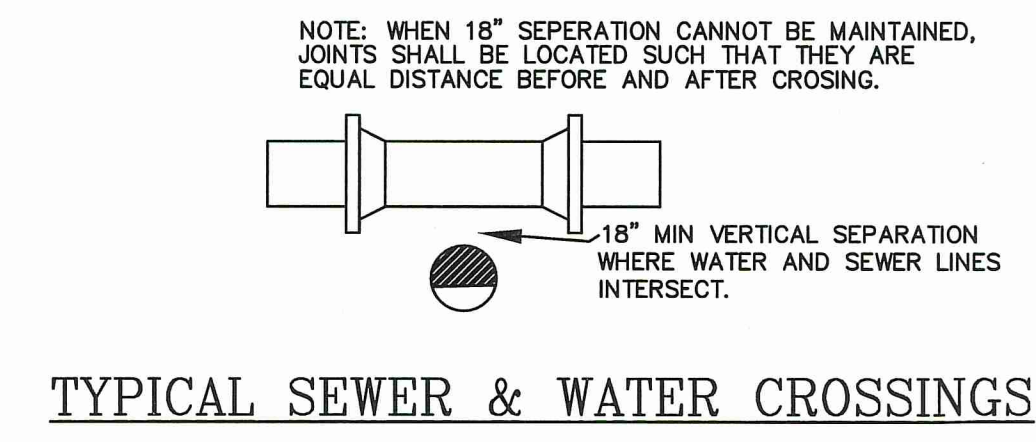
**TRENCH & BEDDING DETAIL**  
 N.T.S. (FOR WATER & SANITARY LINES ONLY)

**AIR RELEASE VALVE DETAIL**

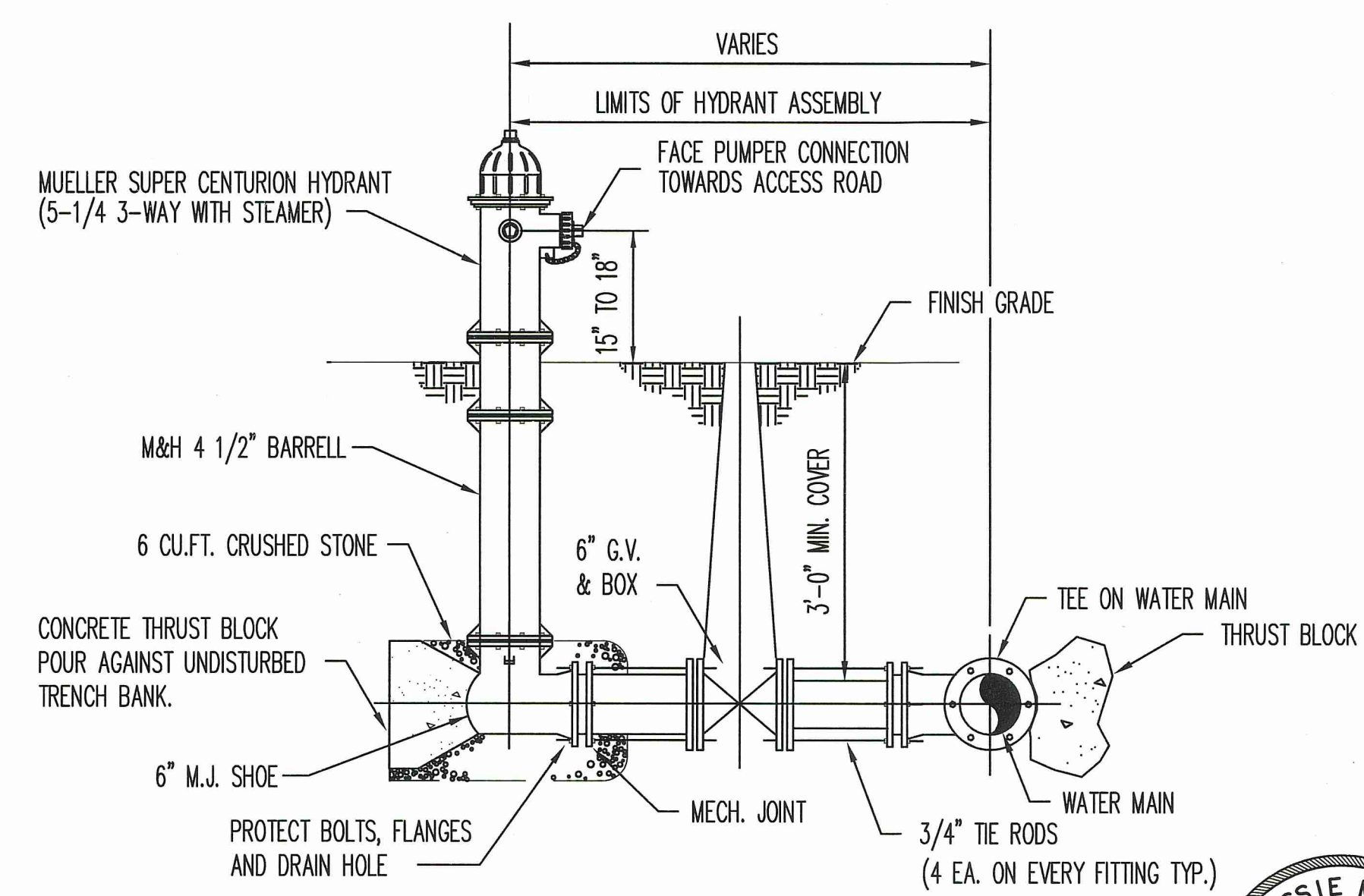


**SIDE ELEVATION**

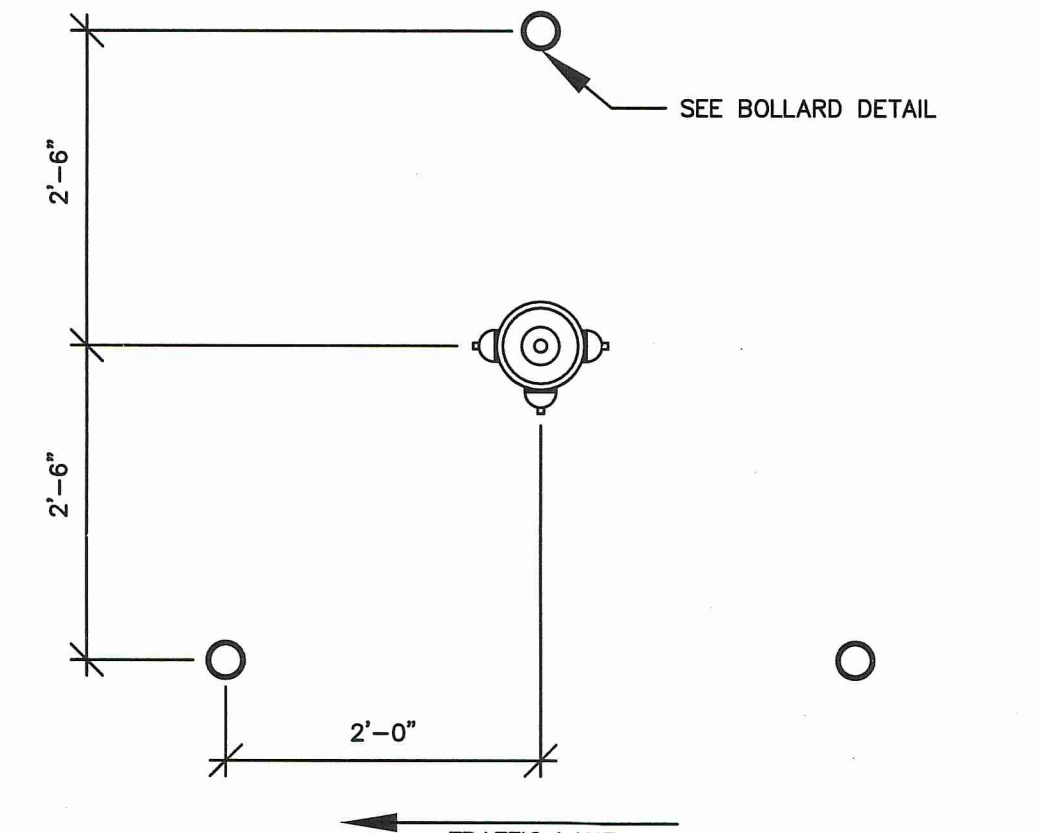
**SECTION A-A**



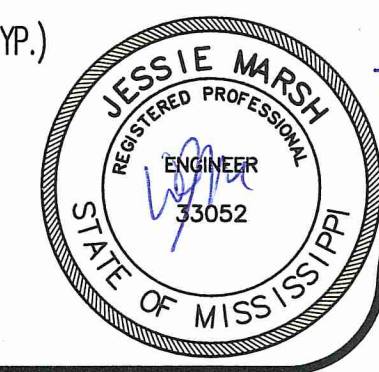
**TYPICAL SEWER & WATER CROSSINGS**



**TYPICAL HYDRANT ASSEMBLY**  
 NO SCALE



**FIRE HYDRANT BOLLARD DETAIL**  
 NO SCALE



THIS DRAWING IS NOT VALID WITHOUT AN ORIGINAL BLUE INK SIGNATURE AND ORIGINAL HANDWRITTEN DATE OF A LICENSED PROFESSIONAL ENGINEER.

**WATER MAIN DETAILS**



K:\200325 - Pearl River County MS Level 1-19 @ MS Hwy 607 SEC\Design\200325v7 Utility Extensions & Lift Station.dwg, U2.6 Water Main Details, 3/1/2023 10:54:03 AM, Jessie, Resource Consulting, LLC copyright.



Know what's below.  
 Call before you dig.