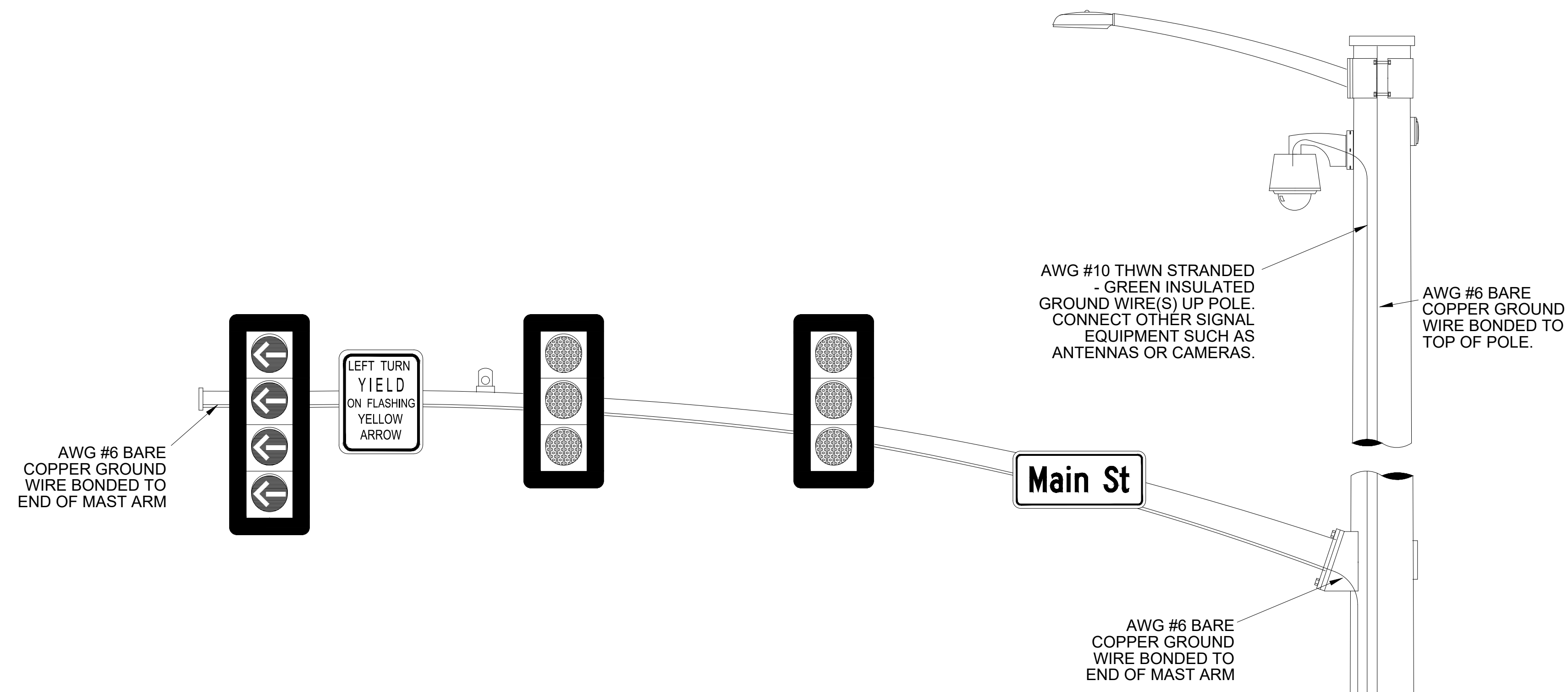
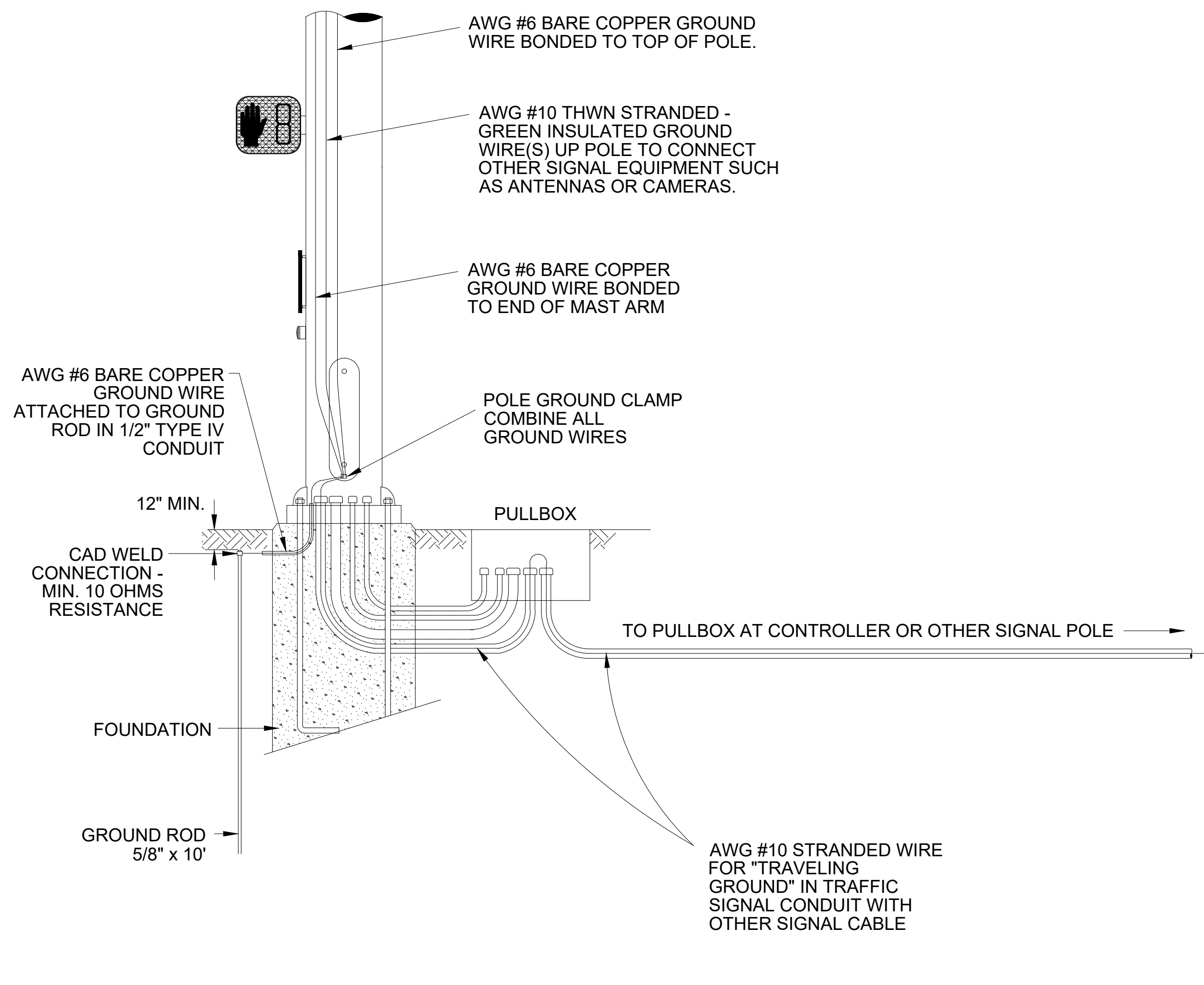


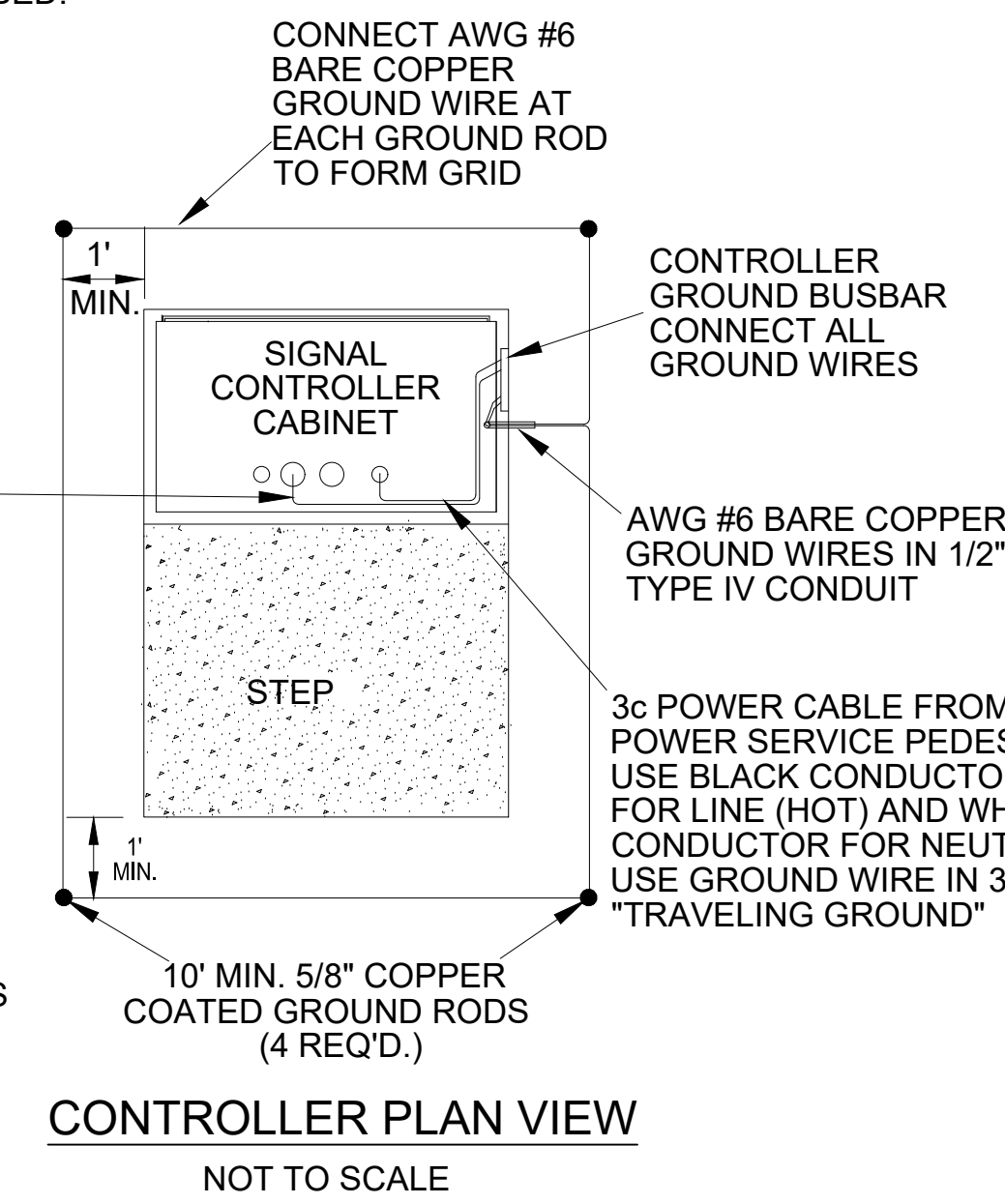
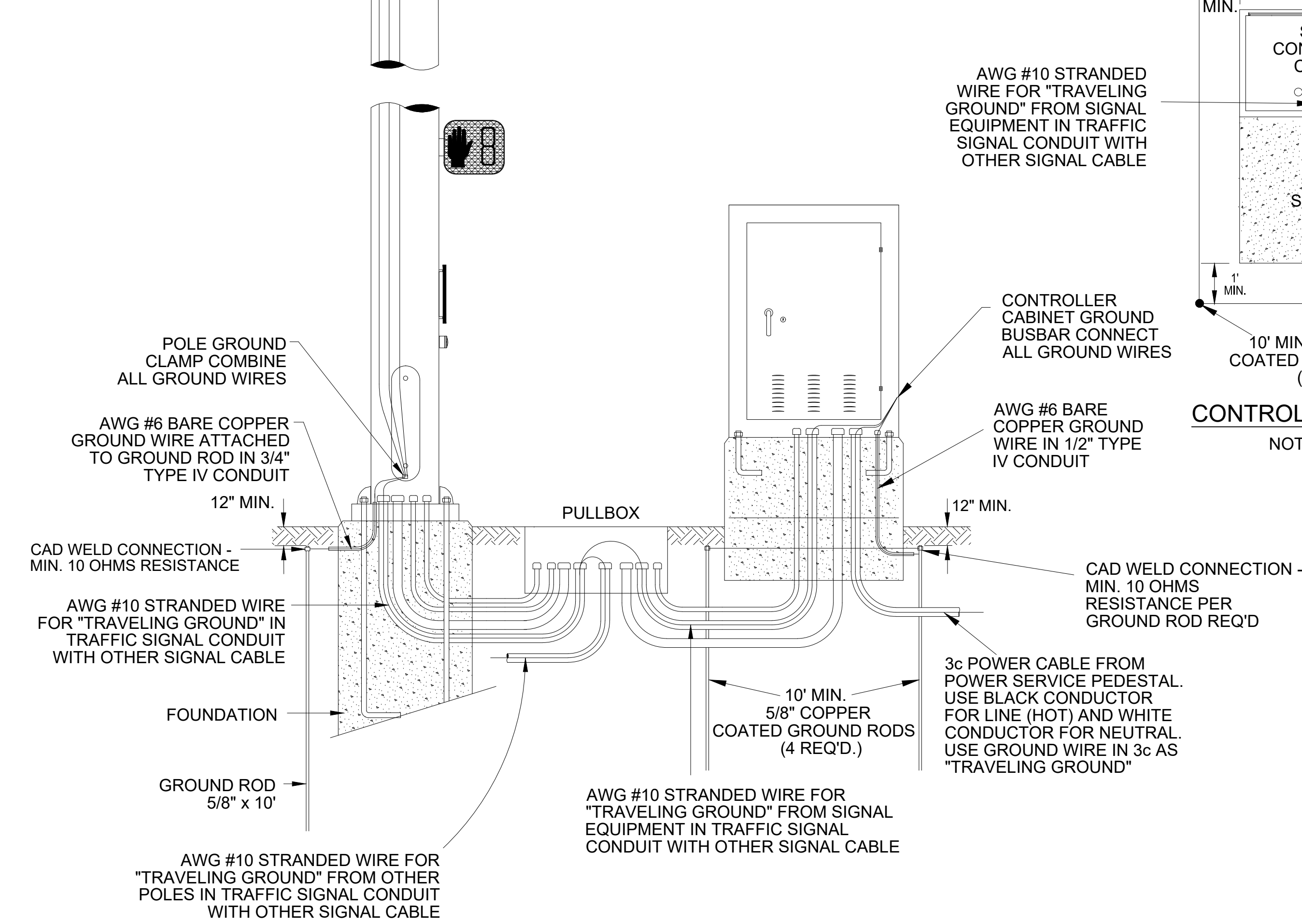
This document, together with the concepts and designs presented herein, as an instrument of service, is intended only for the specific purpose and client for which it was prepared. Reuse of and improper reliance on this document without written authorization and adaptation by Kimley-Horn and Associates, Inc. shall be without liability to Kimley-Horn and Associates, Inc.



- GROUNDING NOTES:**
- GROUND RODS USED SHALL BE COPPER CLAD, STEEL RODS OF THE DIAMETER AND LENGTH SHOWN ON THE PLANS. GROUND RODS SHALL CONFORM TO THE REQUIREMENTS OF UL-467. GROUNDING ROD COUPLERS SHALL BE UL APPROVED, MADE FROM BRONZE, STAINLESS STEEL OR COPPER CLAD WITH A SOLID CENTER PROVIDING 100 PERCENT CONDUCTIVITY.
 - SINGLE GROUND RODS SHALL BE DRIVEN VERTICALLY UNTIL THE TOP OF THE ROD IS AT LEAST 12 INCHES BELOW THE FINISHED GROUND.
 - SOLID CONDUCTOR COPPER WIRE, AWG # 6 SHALL BE USED FOR GROUNDING CONDUCTOR AND BONDING JUMPERS UNLESS OTHERWISE STATED IN THE PLANS. BARE SOLID CONDUCTOR COPPER WIRE SHALL MEET THE REQUIREMENTS OF ASTM B2.
 - AWG #10 THWN STRANDED - GREEN INSULATED WIRE SHALL BE USED FOR TRAVELING GROUND. THIS WIRE RUNS FROM POLE TO POLE BACK TO CONTROLLER CABINET TO TIE ALL EQUIPMENT TOGETHER. IT IS INSTALLED IN THE SAME CONDUIT AS THE OTHER SIGNAL CABLES.
 - THE GROUNDING CONDUCTOR SHALL BE CONTINUOUS AND SHALL BE CONNECTED TO A COMMON GROUND SYSTEM BETWEEN ALL SUPPORTING POLES AND STRUCTURES, TO EACH TRANSFORMER, AND TO EACH GROUNDING CONDUCTOR IN A MULTI-CONDUCTOR CABLE ASSEMBLY. ADDITIONAL GROUNDING RODS ELECTRODES (UP TO FOUR (4) RODS) SHALL BE INSTALLED TO OBTAIN A MAXIMUM VALUE OF FIVE (5) OHMS TO GROUND.
 - BOLTED GROUNDING CONNECTIONS OF SOLDER-LESS TYPE MADE OF THE HIGH STRENGTH ELECTRICAL BRONZE WITH SILICON BRONZE CLAMPING BOLTS AND HARDWARE MAY BE USED; DESIGNED SUCH THAT, BOLTS, NUTS, LOCK WASHERS AND SIMILAR HARDWARE THAT MIGHT NICK OR OTHERWISE DAMAGE THE GROUND WIRE WILL NOT DIRECTLY CONTACT THE GROUND WIRE. GROUNDING SPLICES SHALL NOT BE INSULATED.
 - EXOTHERMIC WELDED GROUND CONNECTIONS SHALL BE USE WHERE SPECIFIED.
 - ALL SIGNAL EQUIPMENT AND CABLE SHALL BE PROTECTED WITH AN INLINE SURGE SUPPRESSOR IF RECOMMENDED BY THE MANUFACTURER OR A PANEL MOUNTED SURGE SUPPRESSOR AS RECOMMENDED BY THE MANUFACTURER OR APPROVED EQUAL, INSTALLED AND GROUNDED PER MANUFACTURER'S RECOMMENDATIONS.
 - ALL GROUNDING EQUIPMENT AND WIRE SHALL BE COST ABSORBED.



GROUNDING DETAIL
NOT TO SCALE



CONTROLLER PLAN VIEW
NOT TO SCALE

NO.	REVISIONS	DATE	BY

Kimley»Horn
420 N 20TH ST, SHIPT TOWER STE 2200, BIRMINGHAM, AL 35203
PHONE: 205-558-5831
WWW.KIMLEY-HORN.COM



KHA PROJECT	142362033
DATE	2/2022
SCALE	AS SHOWN
DESIGNED BY	BST
DRAWN BY	BST
CHECKED BY	CBB

**TRAFFIC SIGNAL
GROUNDING DETAILS**

LOVE'S TRAVEL STOP
TRAFFIC SIGNAL DESIGN
PREPARED FOR
MDOT