

This document, together with the concepts and designs presented herein, is intended only for the specific purpose and client for which it was prepared. Reuse of and improper reliance on this document without written authorization and adaptation by Kimley-Horn and Associates, Inc. shall be without liability to Kimley-Horn and Associates, Inc.

DIMENSION CHART

LANE WIDTH	"A"	"B"	"C"
10'	2.5'	2.5'	5'
11'	2.5'	3'	6'
12'	3'	3'	6'
14'	3'	4'	8'

MINIMUM LOOP SEPARATION WHEN NO LANE LINES ARE PRESENT IS 3'

WIRE CHART

LOOP	TURNS (# OF WIRES)
6' x 6'	3
6' x <20'	3
6' x >20'	2
6' x 50' QUAD	2-4-2

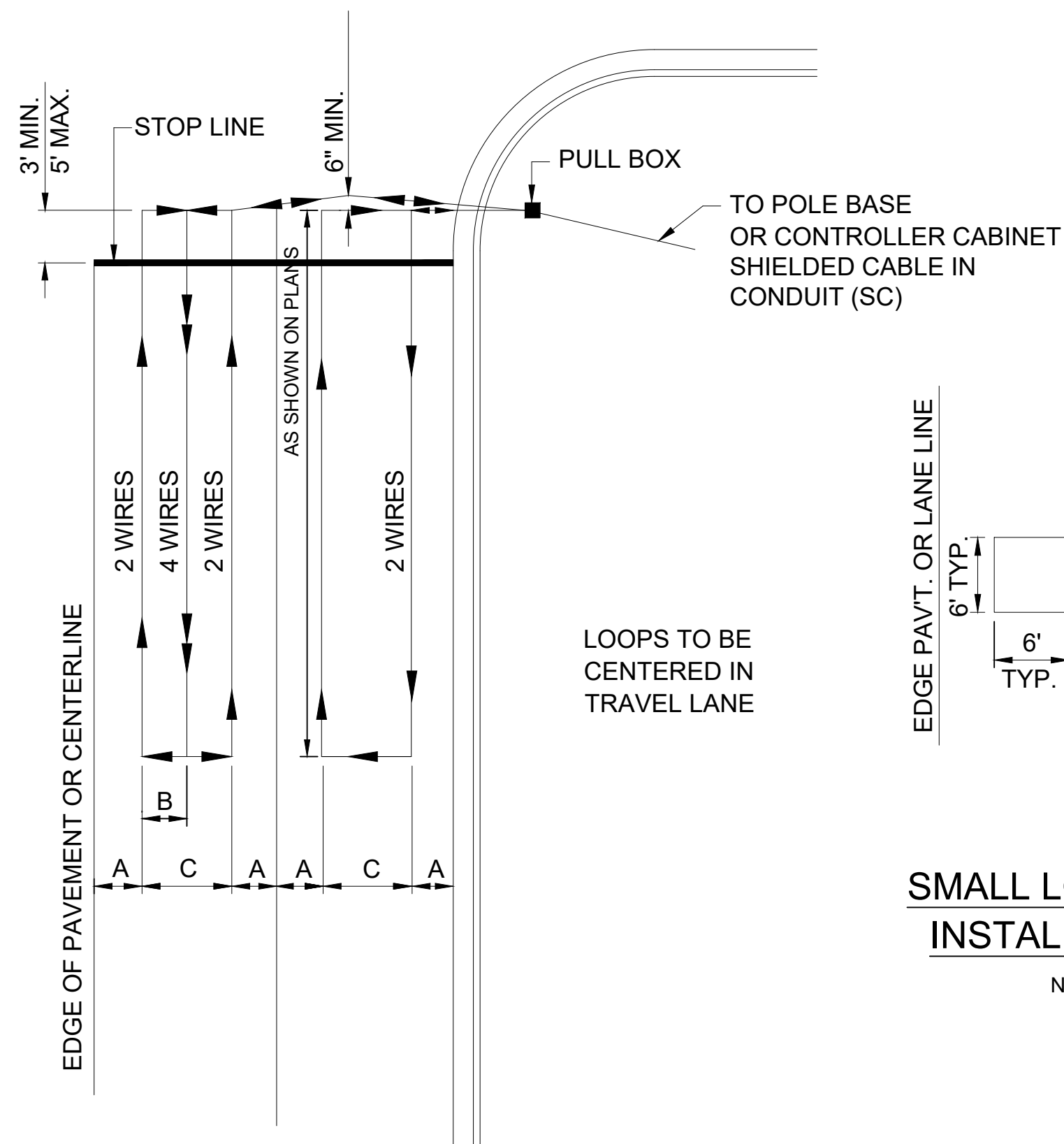
PAY QUANTITY CHART

LOOP	LINEAR FEET
6' x 6'	24
6' x 50' BOX	112
6' x 50' QUAD	162

PLUS HOMERUN (SEE NOTE 1.)

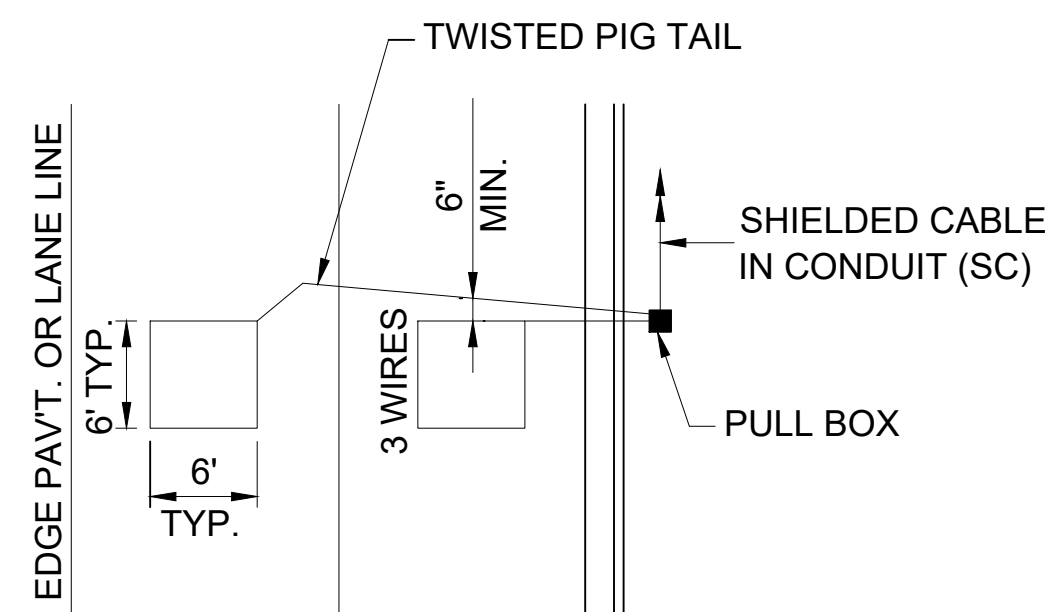
LARGE LOOP DETECTOR INSTALLATION DETAIL

NOT TO SCALE



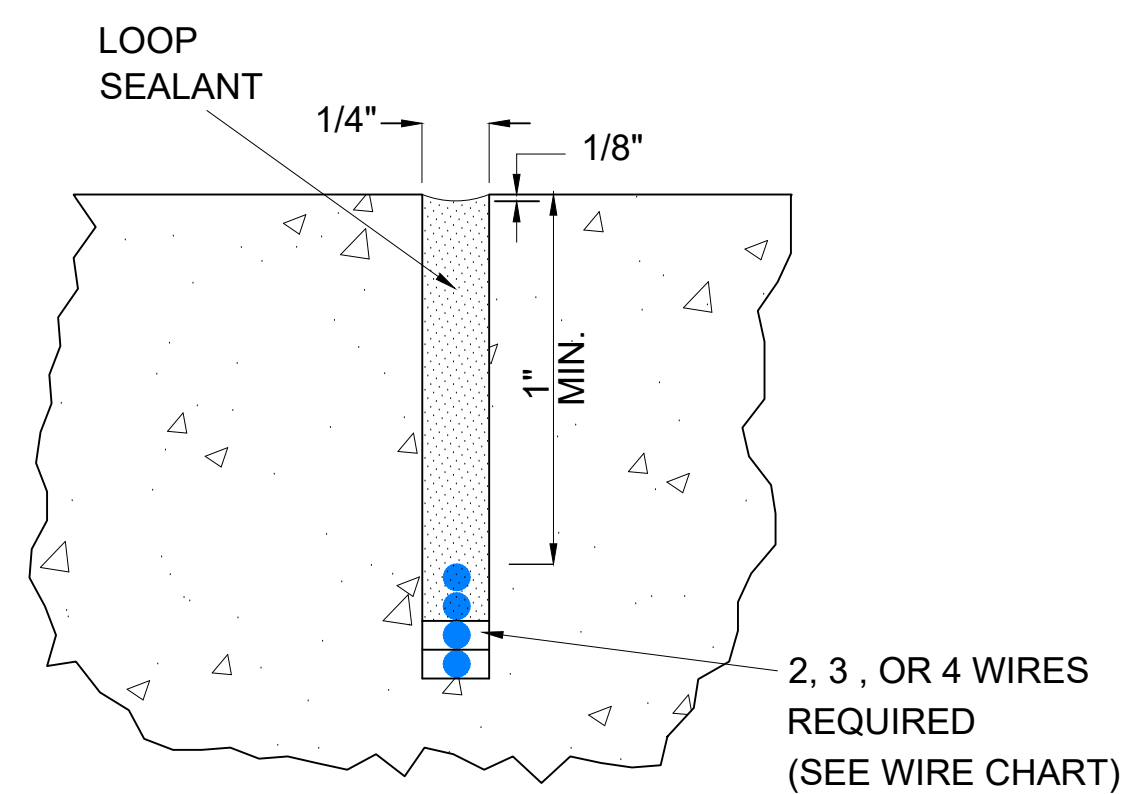
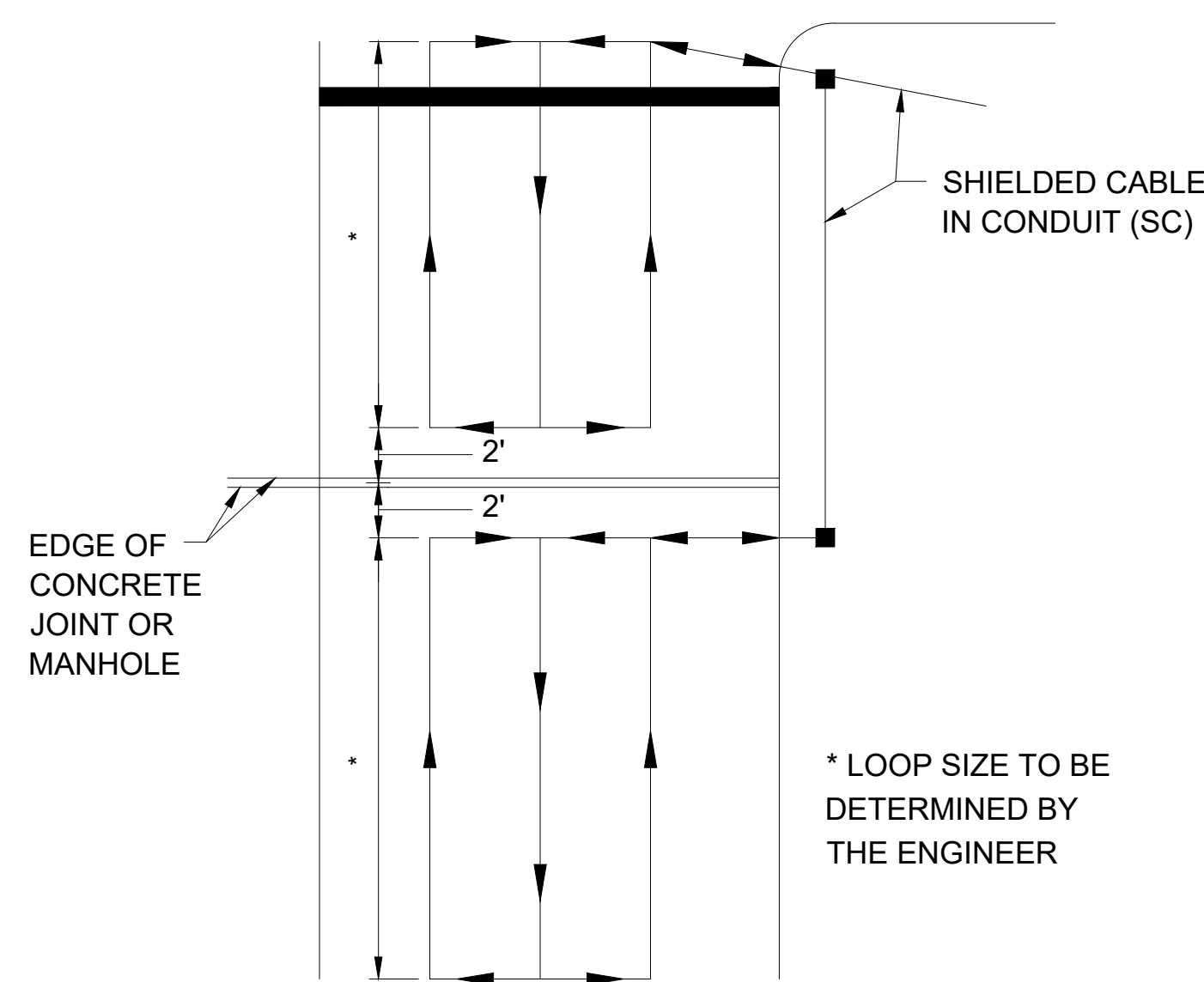
SMALL LOOP DETECTOR INSTALLATION DETAIL

NOT TO SCALE

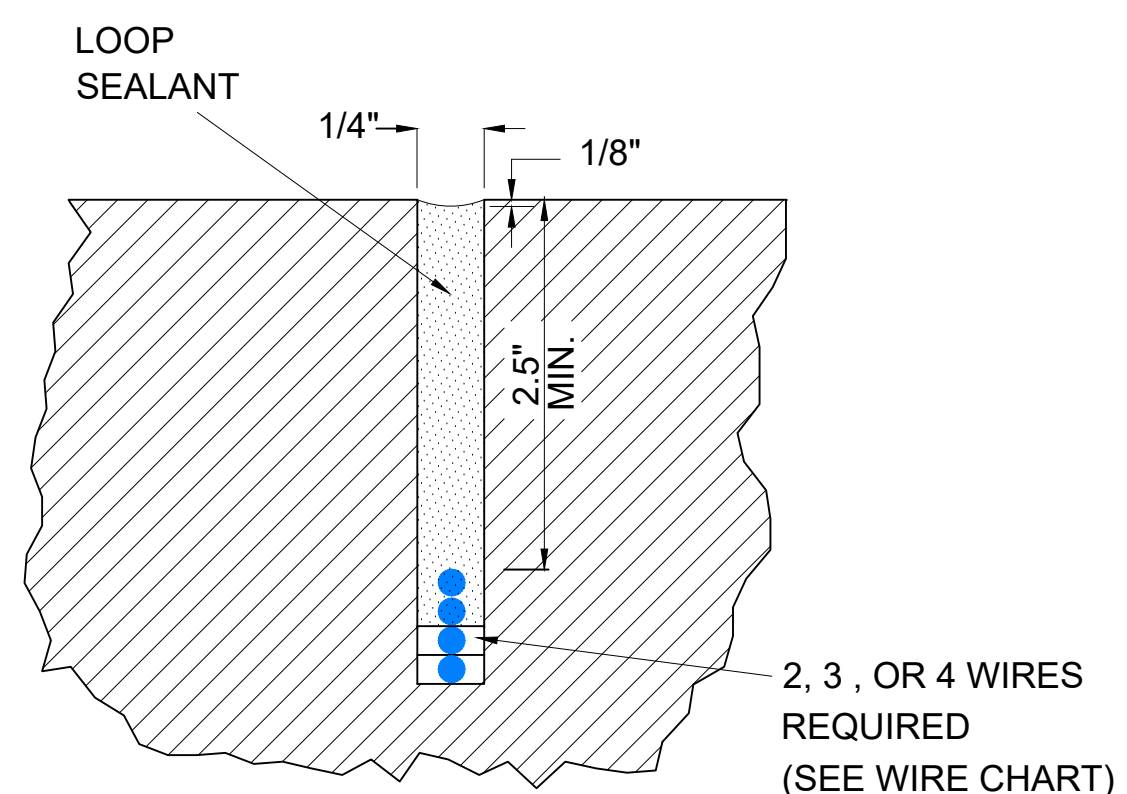


TYPICAL DETAIL OF LOOP DETECTOR WHERE TRANSVERSE CONCRETE JOINTS, MANHOLES, ETC. ARE ENCOUNTERED

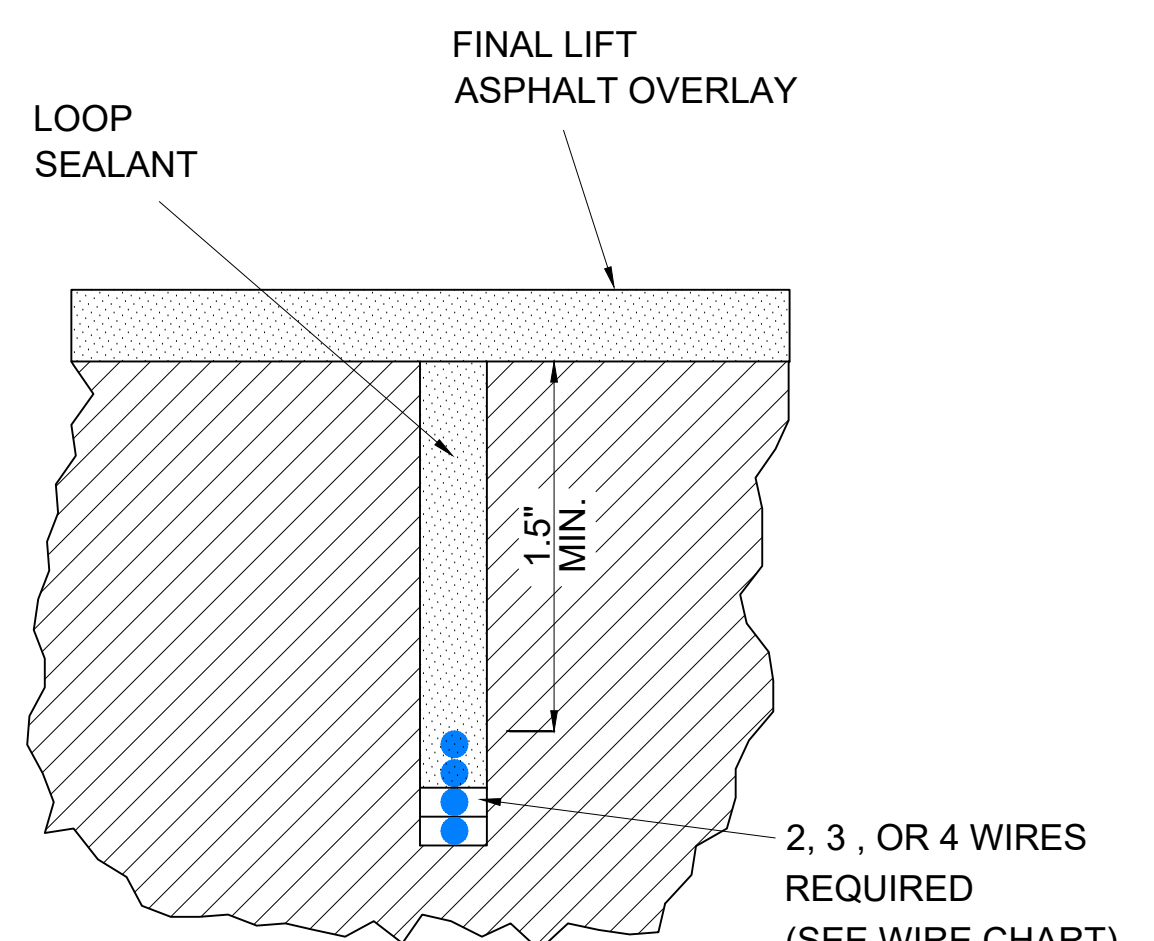
NOT TO SCALE



CONCRETE



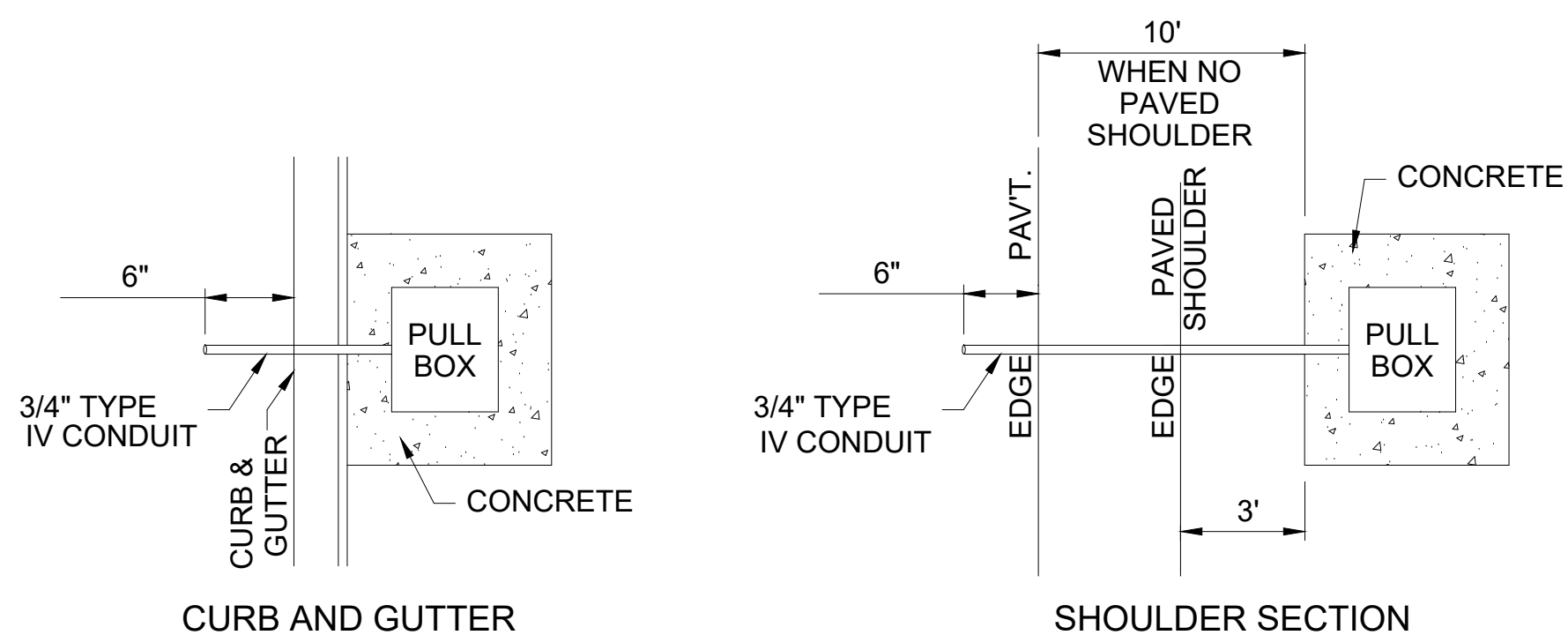
IN PLACE ASPHALT



ASPHALT (NEW CONSTRUCTION)

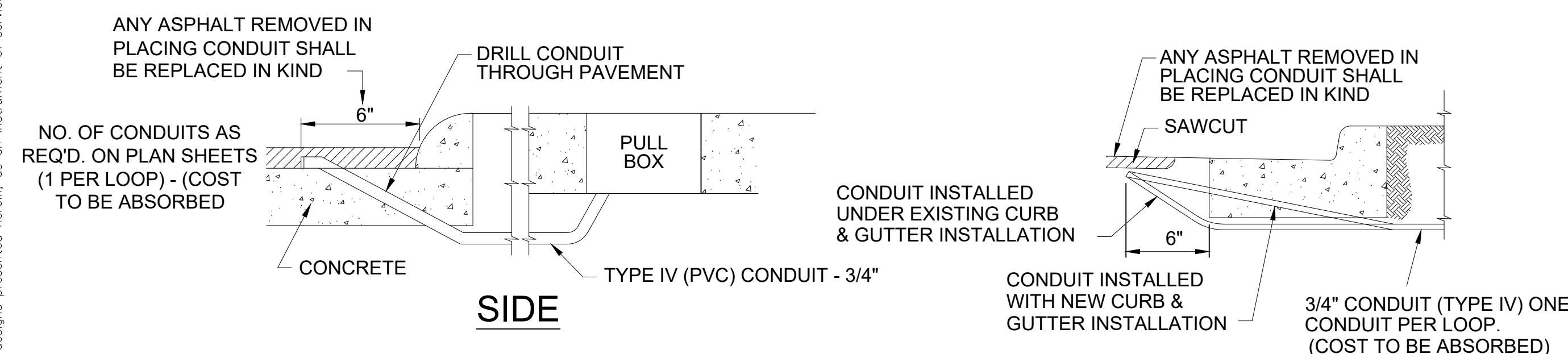
NOTES:

1. VEHICLE LOOP ASSEMBLY WILL BE MEASURED BY THE LINEAR FOOT COMPUTED HORIZONTALLY, REGARDLESS OF NUMBER OF TURNS, IN WHICH THE LOOP WIRE IS INSTALLED AND WILL INCLUDE THE LOOP LEAD-IN TO THE PULL BOX. SHIELDED CABLE WILL BE MEASURED BY THE LINEAR FOOT, MEASURED HORIZONTALLY ALONG THE CONDUIT OR MESSENGER CABLE AND VERTICALLY ALONG THE POLE.
2. FOR NEW CONSTRUCTION OR OVERLAY, VEHICLE LOOP ASSEMBLIES SHALL BE INSTALLED IN THE TOP LAYER OF BINDER OR EXISTING SURFACE BEFORE THE FINAL SURFACE COURSE IS APPLIED.
3. NO LOOPS ARE TO BE INSTALLED THROUGH, OVER, OR UNDER TRANSVERSE CONCRETE JOINTS IN CONCRETE PAVEMENT, AND NO MANHOLES, INLETS, ETC. MAY BE LOCATED WITHIN A LOOP. IF ANY OF THE ABOVE ARE ENCOUNTERED THE LOCATION OF THE LOOP MAY BE VARIED SLIGHTLY AS DIRECTED BY THE ENGINEER. IF THE ABOVE ITEMS ARE UNAVOIDABLE, SMALLER LOOPS AS SHOWN BELOW MAY BE USED. SMALLER LOOPS USED TO REPLACE ONE LARGE LOOP MAY BE CONNECTED IN SERIES TO ONE CHANNEL.



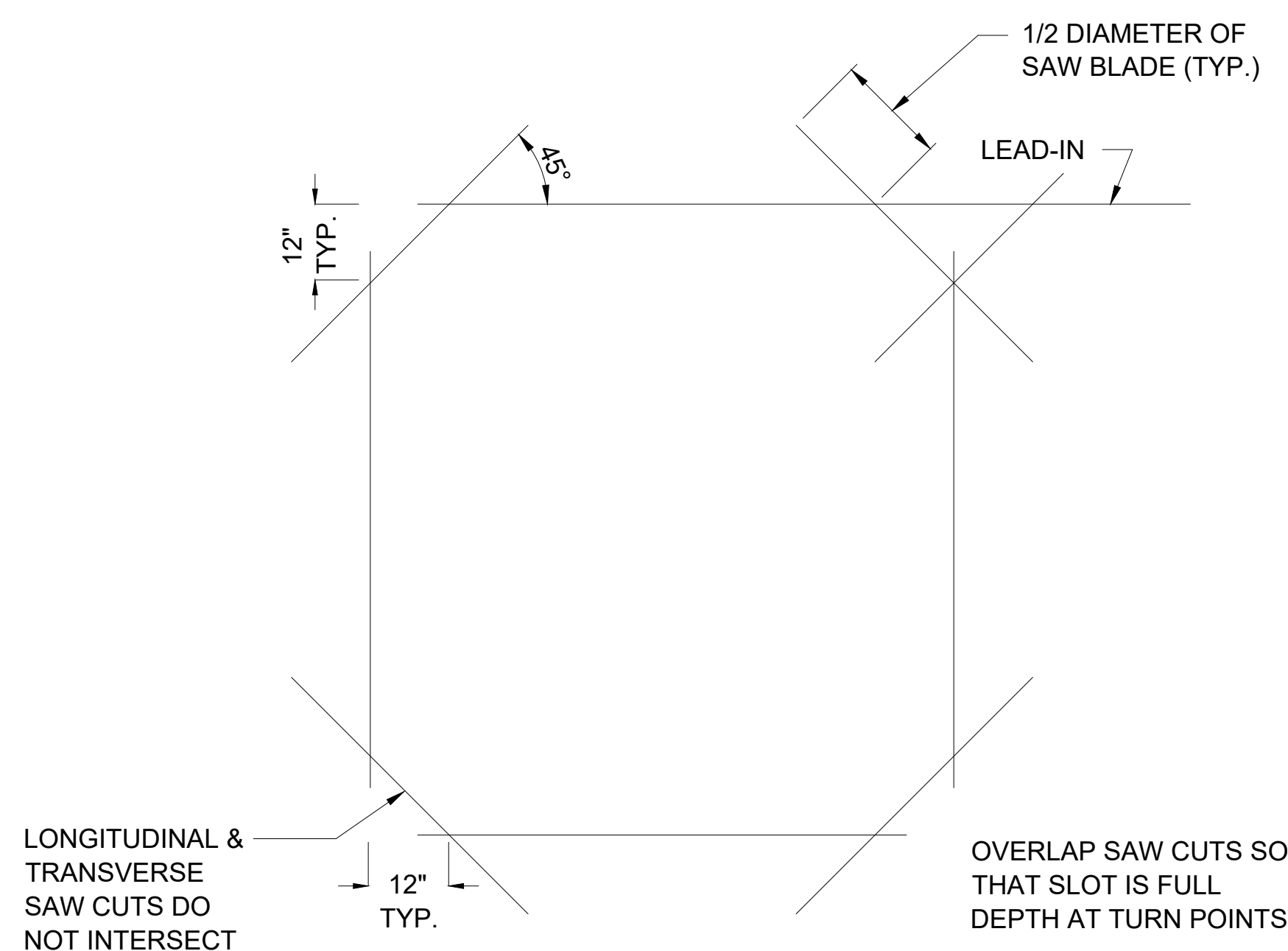
LOOP PULL BOX LOCATION DETAIL

NOT TO SCALE



HOMERUN CONDUIT INSTALLATION DETAIL

NOT TO SCALE

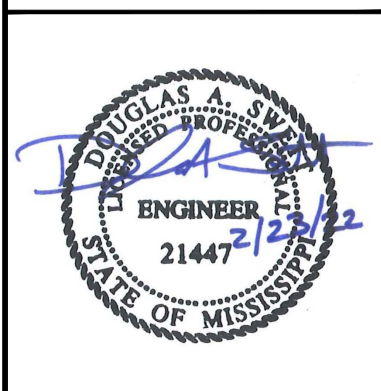


LOOP SLOT CONSTRUCTION DETAIL

NOT TO SCALE

NO.	REVISIONS	DATE	BY

Kimley»Horn
 420 N 20TH ST, SHIPT TOWER STE 2200, BIRMINGHAM, AL 35203
 PHONE: 205-558-5831
 WWW.KIMLEY-HORN.COM



KHA PROJECT	142362033
DATE	2/2022
SCALE	AS SHOWN
DESIGNED BY	BST
DRAWN BY	BST
CHECKED BY	CBB

LOOP DETECTOR DETAILS

LOVE'S TRAVEL STOP
 TRAFFIC SIGNAL DESIGN
 PREPARED FOR
MDOT

