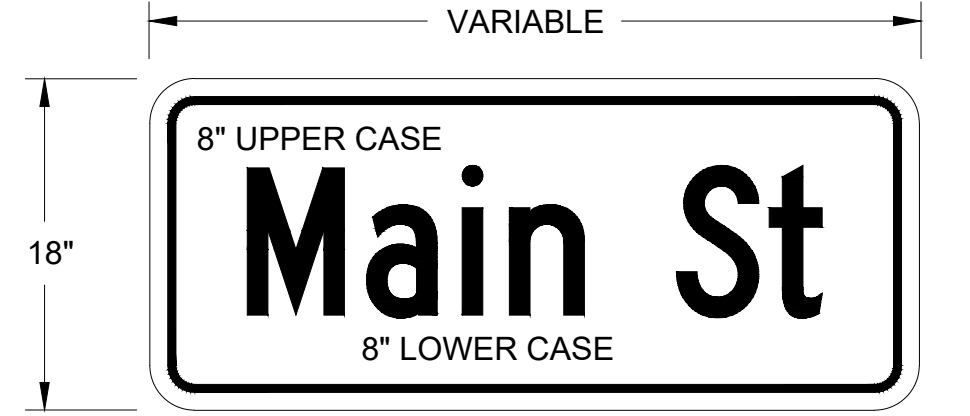


This document, together with the concepts and designs presented herein, as an instrument of service, is intended only for the specific purpose and client for which it was prepared. Reuse of and improper reliance on this document without written authorization and adaptation by Kimley-Horn and Associates, Inc. shall be without liability to Kimley-Horn and Associates, Inc.



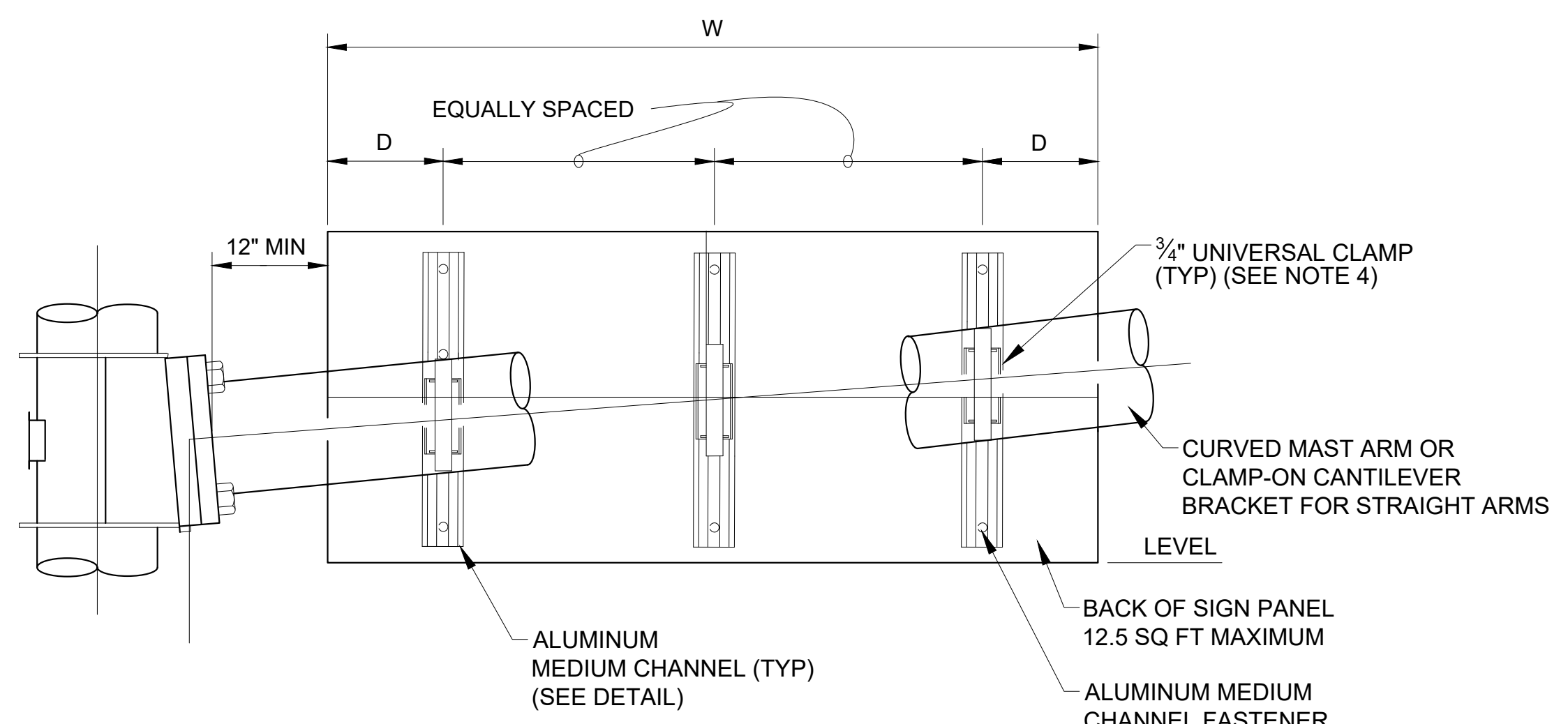
SINGLE LINE STREET NAME SIGN DETAIL
(TYPICAL)

8" UPPER CASE & LOWER CASE LETTERS; SERIES "C"
THICKNESS = 0.1"
WHITE LETTERS AND BORDER ON GREEN TYPE XI PRISMATIC RETROREFLECTIVE SHEETING
DIRECTLY APPLIED RETROREFLECTIVE SHEETING ONLY. DIGITALLY PRINTING WILL NOT BE ALLOWED.



DOUBLE LINE STREET NAME SIGN DETAIL
(TYPICAL)

8" UPPER CASE & LOWER CASE LETTERS; SERIES "C"
THICKNESS = 0.1"
WHITE LETTERS AND BORDER ON GREEN TYPE XI PRISMATIC RETROREFLECTIVE SHEETING
DIRECTLY APPLIED RETROREFLECTIVE SHEETING ONLY. DIGITALLY PRINTING WILL NOT BE ALLOWED.
ROADWAY TO LEFT ON TOP, ROADWAY TO RIGHT ON BOTTOM
JUSTIFY TEXT AND ARROW LEFT AND RIGHT ON SIGN

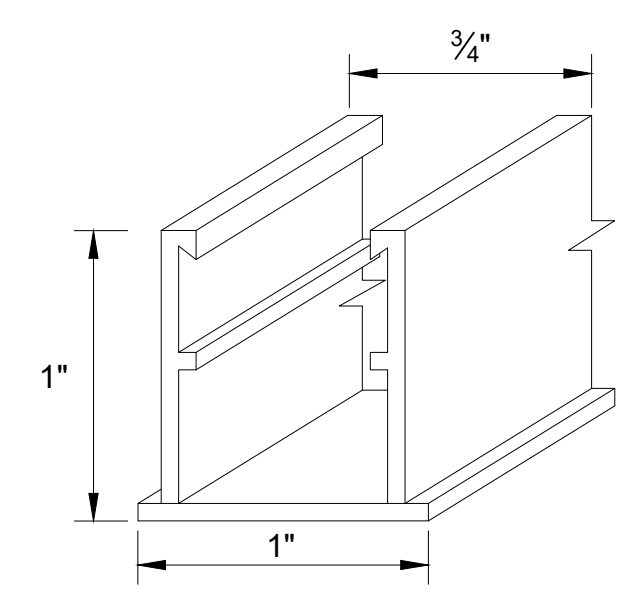


OPTION A MAST ARM SIGN MOUNT

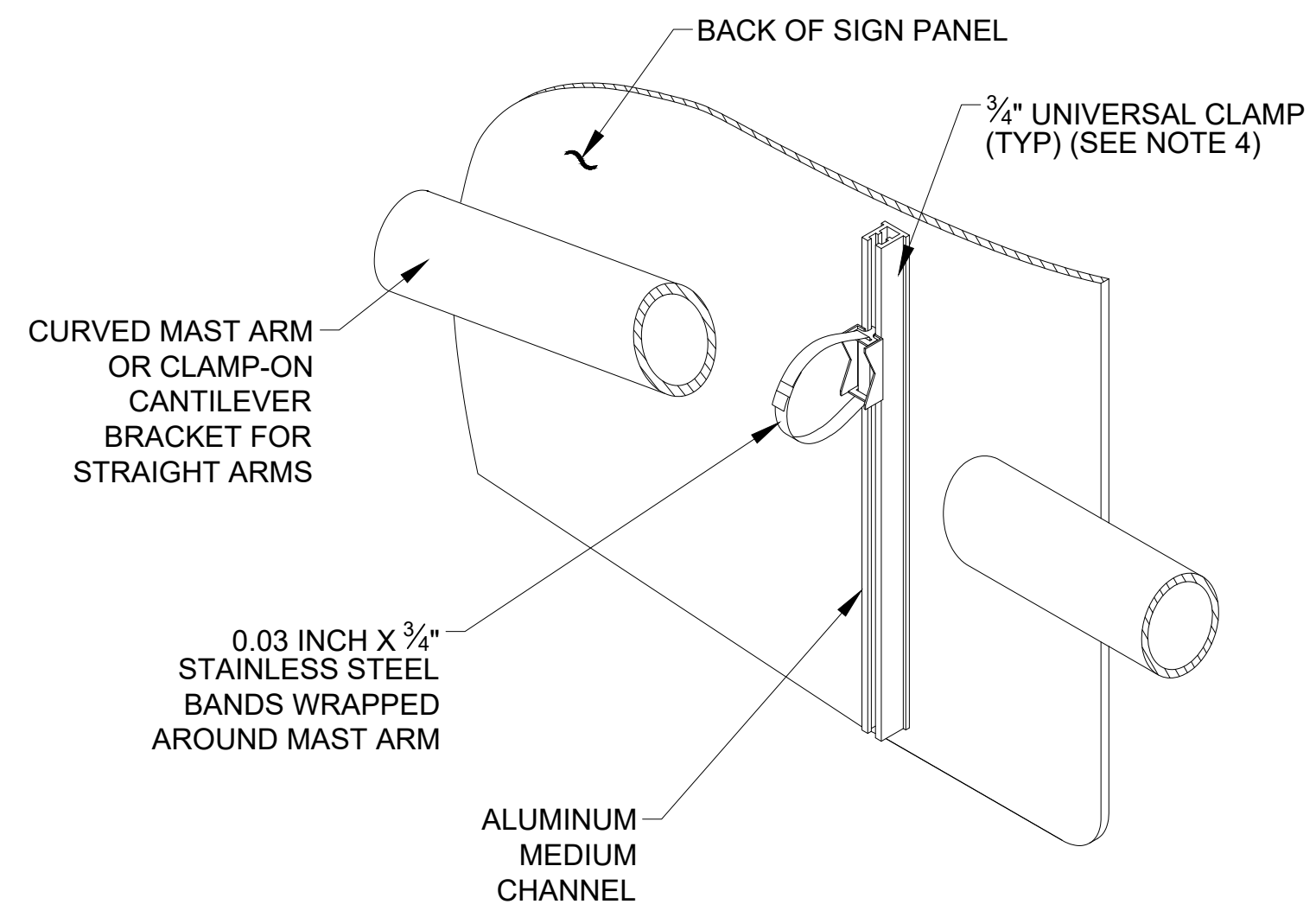
(SEE TABLE 1)
(SEE NOTE 4)

TABLE 1
DIMENSIONS OF OPTION A

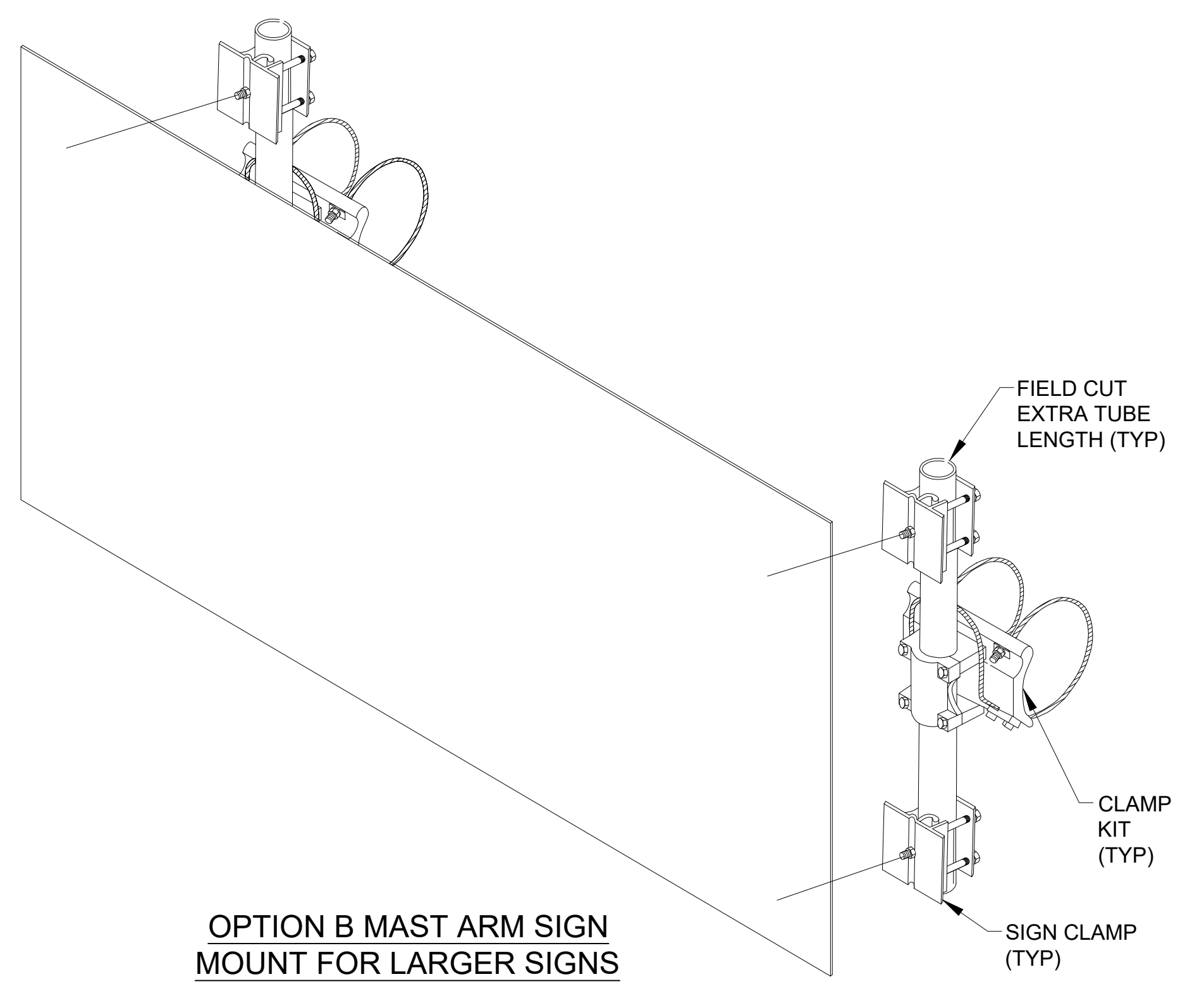
WIDTH OF SIGN (W, INCH)	D (INCH)	NUMBER OF MEDIUM CHANNELS
W ≤ 48	W/4	2
48 < W ≤ 96	12	3



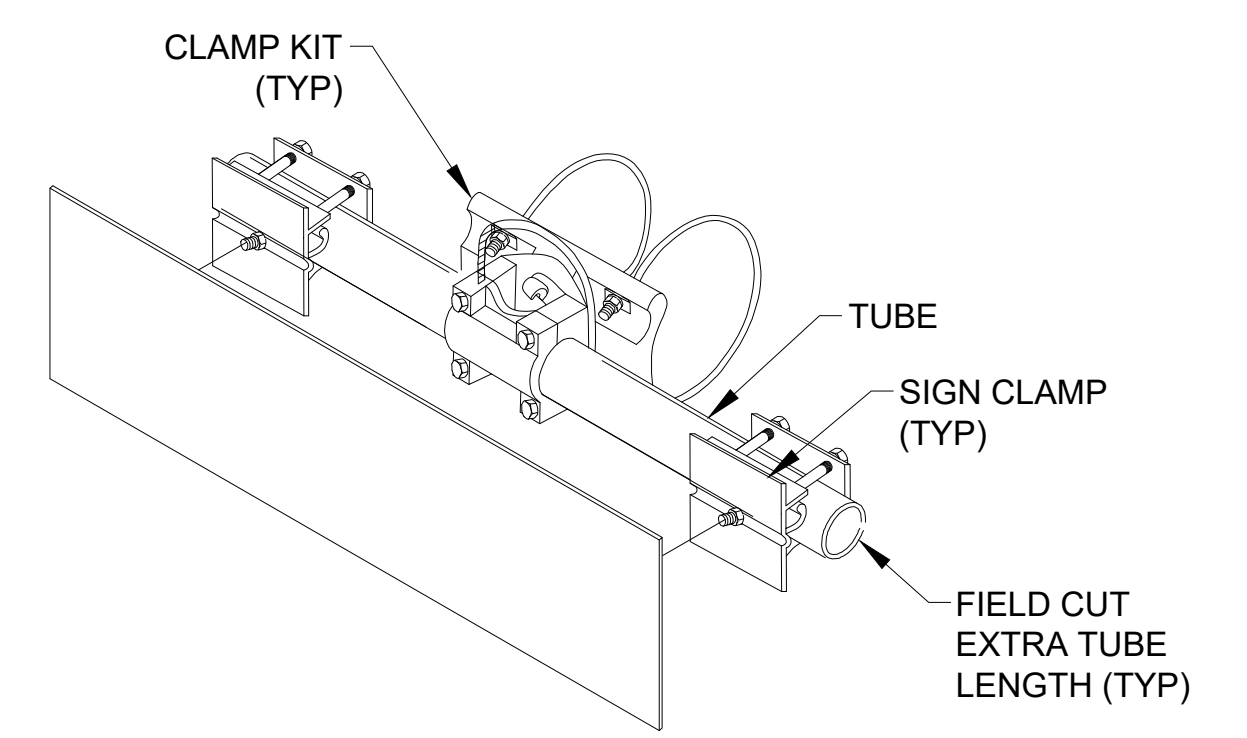
ALUMINUM MEDIUM CHANNEL DETAIL



OPTION A INSTALLATION DETAIL



OPTION B MAST ARM SIGN MOUNT FOR LARGER SIGNS



OPTION B MAST ARM SIGN MOUNT FOR SMALL SIGNS

- GENERAL NOTES:**
- SEE TSD-3 FOR ADDITIONAL MAST ARM INFORMATION.
 - ALL MATERIALS FOR TRAFFIC AND STREET NAME SIGNS SHALL BE NEW AND MEET THE REQUIREMENTS OF SECTION 721 OF THE STANDARD SPECIFICATIONS.
 - PROVIDE MINIMUM 17 FT CLEARANCE FROM THE BOTTOM OF THE SIGN OR SIGN MOUNTING ASSEMBLY TO THE HIGHEST POINT ON THE ROADWAY SURFACE UNDER THE SIGN.
 - ADJUST UNIVERSAL CLAMP LOCATION TO LEVEL SIGN. OPTION B SHALL BE USED WHEN CURVED SECTION OF MAST ARM WILL NOT ALLOW FOR LEVEL INSTALLATION.
 - TRAFFIC SIGN AND STREET NAME SIGN WILL BE MEASURED BY THE SQUARE FOOT, WHICH MEASUREMENT BEING INCLUSIVE OF ALUMINUM SIGN BLANK, APPLIED REFLECTIVE SHEETING, MOUNTING BRACKETS AND BANDING MATERIALS AND BEGIN INCLUSIVE OF ALL MATERIALS, WORK AND SERVICES NECESSARY FOR A PROPERLY CONSTRUCTED SIGN.
 - ATTACH THE ALUMINUM MEDIUM CHANNEL TO SIGN PANEL WITH STAINLESS STEEL BOLTS, TAPPING SCREWS OR POP RIVETS AS SPECIFIED. USE ADHESIVE ONLY WHEN SHOP APPLIED. NO FIELD ADHESIVE IS ALLOWED.

NO.	REVISIONS	DATE	BY

Kimley»Horn
420 N 20TH ST, SHIPT TOWER STE 2200, BIRMINGHAM, AL 35203
PHONE: 205-558-5831
WWW.KIMLEY-HORN.COM



KHA PROJECT	142362033	DATE	2/2022	SCALE	AS SHOWN	DESIGNED BY	BST	DRAWN BY	BST	CHECKED BY	CBB
-------------	-----------	------	--------	-------	----------	-------------	-----	----------	-----	------------	-----

STREET SIGN DETAILS

LOVE'S TRAVEL STOP
TRAFFIC SIGNAL DESIGN
PREPARED FOR
MDOT

PICAYUNE MS

