

GENERAL NOTES

1. REFER TO INTERIOR FINISH LEGEND FOR FINISHES.
2. REFER TO EQUIPMENT SCHEDULES FOR EQUIPMENT.
3. DO NOT PAINT BEHIND LAMINATE

STIPULATION FOR REUSE
THE DRAWINGS ARE PREPARED FOR
USE ON A SPECIFIC SITE AT
CONTINGUOUSLY WITH ITS ISSUE
DATE. ANY REUSE OF THESE
DRAWINGS FOR USE ON A DIFFERENT
PROJECT SITE OR AT A LATER TIME
WITHOUT THE WRITTEN CONSENT OF
HARRISON FRENCH & ASSOCIATES,
PLLC IS PROHIBITED. ANY REUSE
WITHOUT THE WRITTEN CONSENT OF
HARRISON FRENCH & ASSOCIATES,
PLLC IS PROHIBITED AND MAY BE
CONSIDERED AS A VIOLATION OF
THE LAW.

Loves
STORE NUMBER: 860
I-59, EXIT 1
NICHOLSON, MS 39466
JOB NUMBER: 03-23-30009

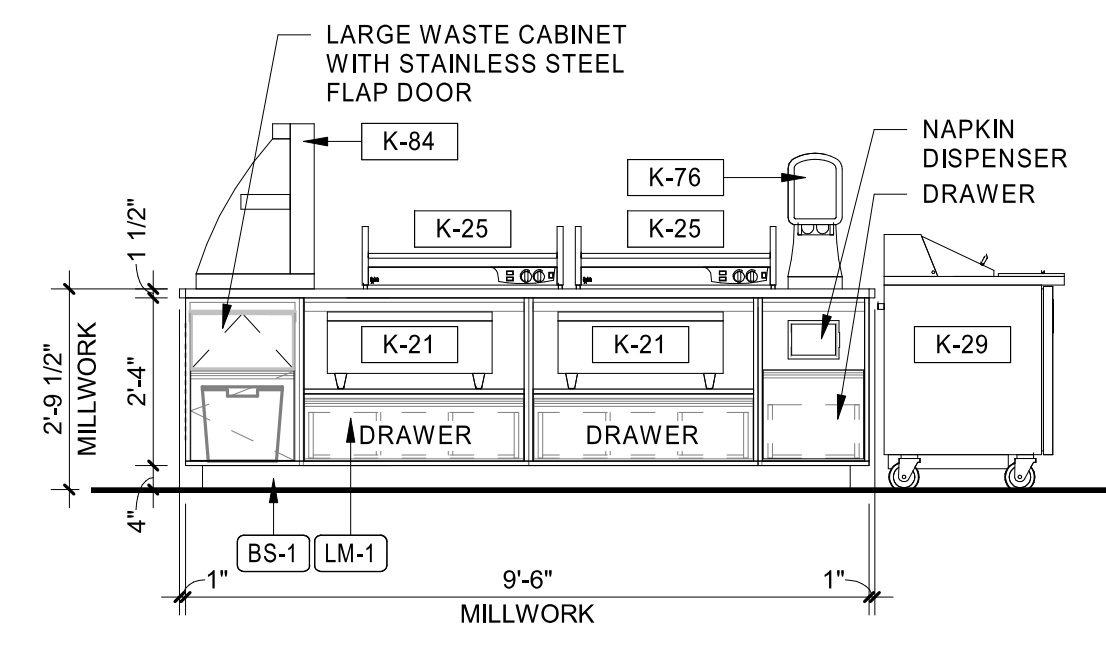
ISSUE BLOCK

CHECKED BY: MAP
DRAWN BY: ASE
DOCUMENT DATE: 02/06/23
PROTO: T1-180
PROTO CYCLE: Q4 - 2022

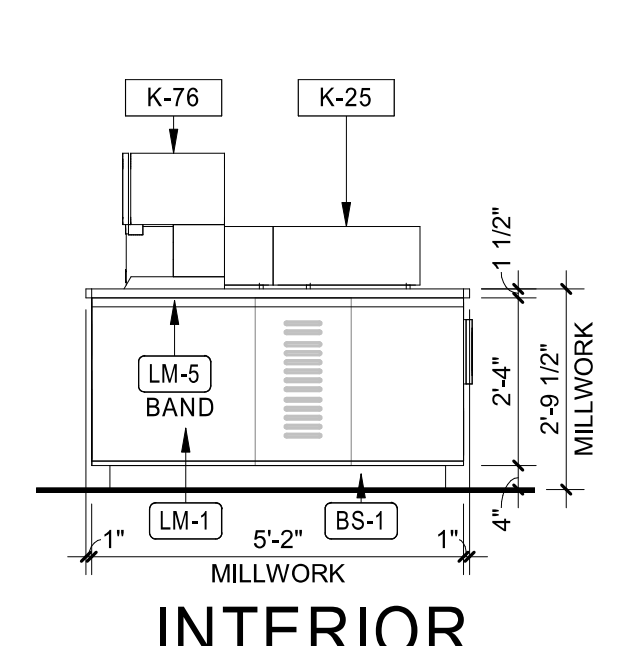
REGISTERED ARCHITECT
BOGUE L. EBBRECHT
4925
Bogue Louis Ebbrecht
1533 99-9999

INTERIOR ELEVATIONS

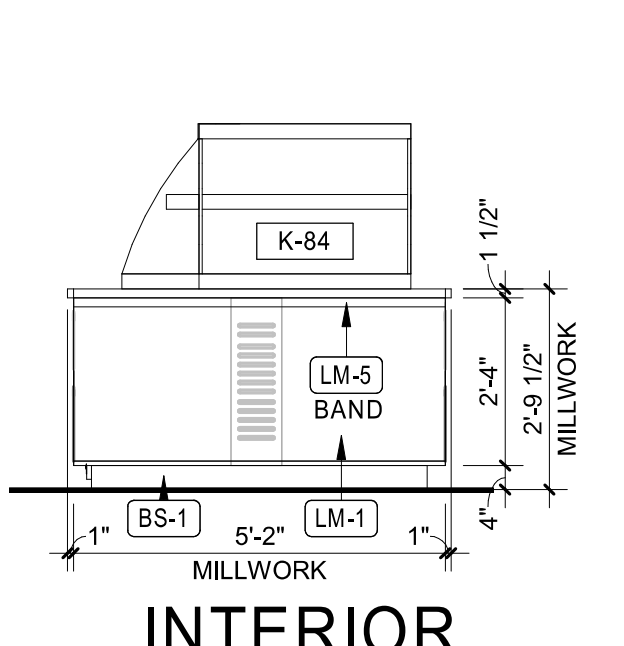
SHEET: **A416**



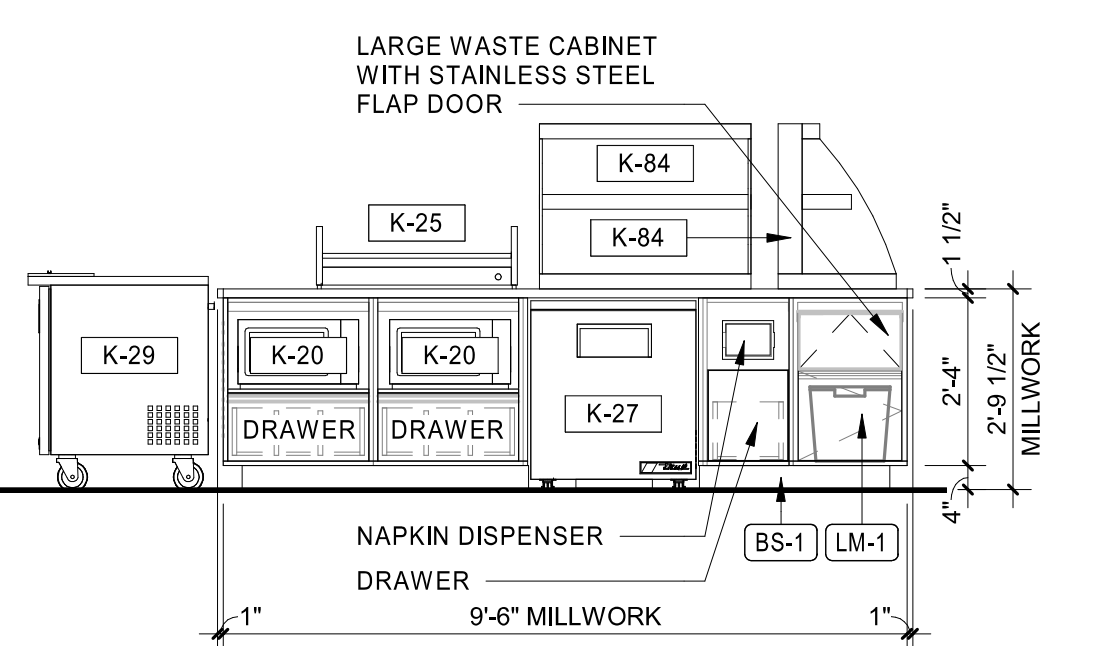
13 INTERIOR ELEVATION
3/8" = 1'-0"



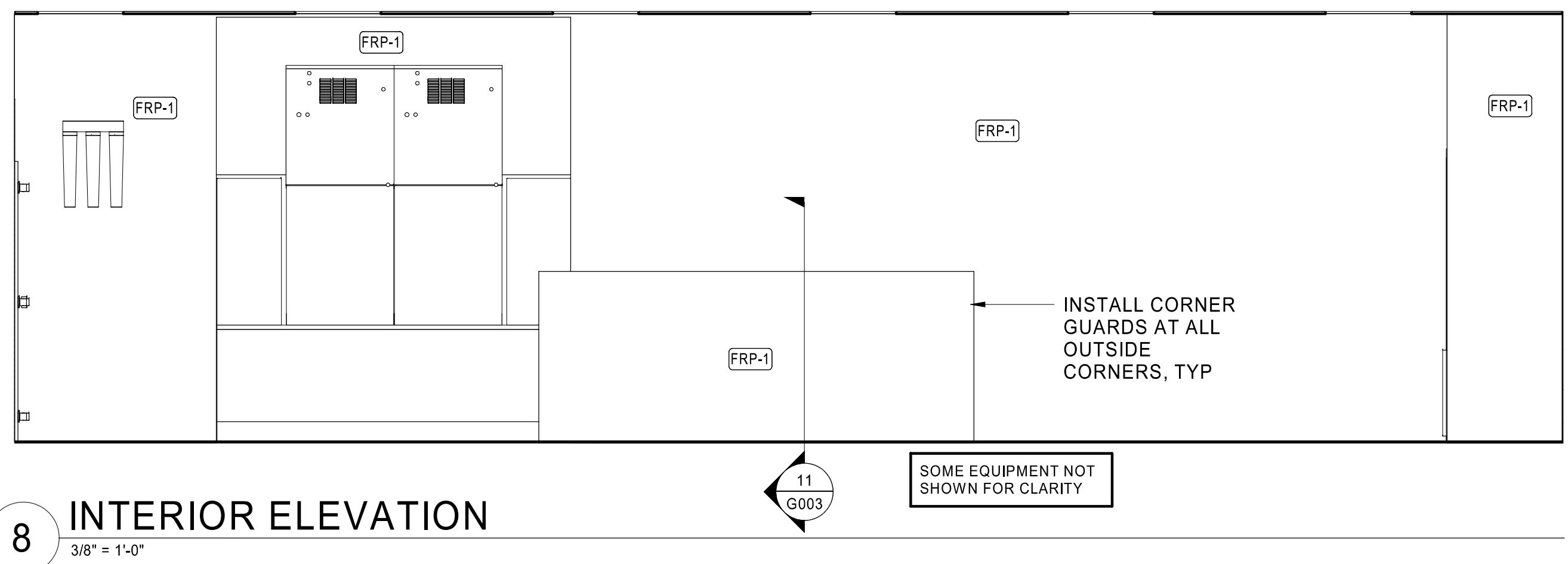
14 INTERIOR ELEVATION
3/8" = 1'-0"



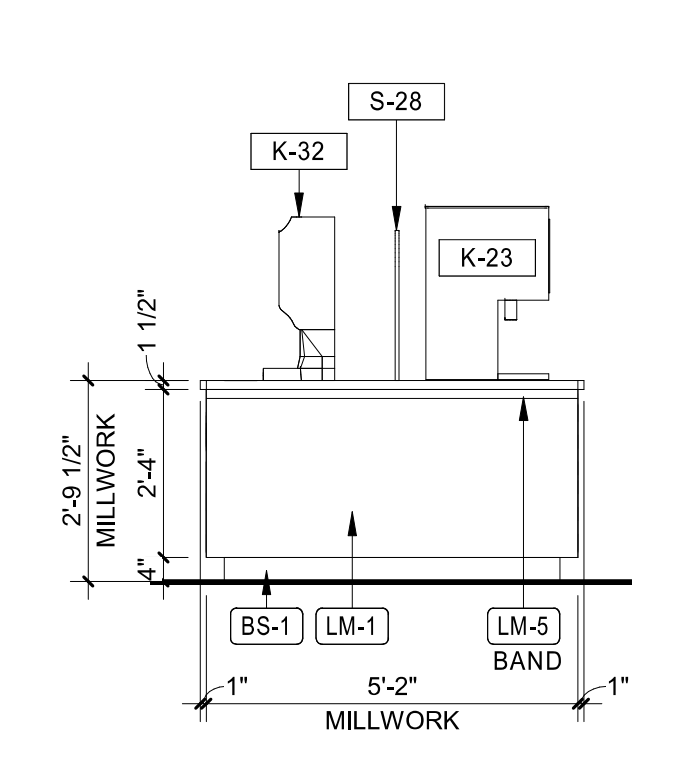
15 INTERIOR ELEVATION
3/8" = 1'-0"



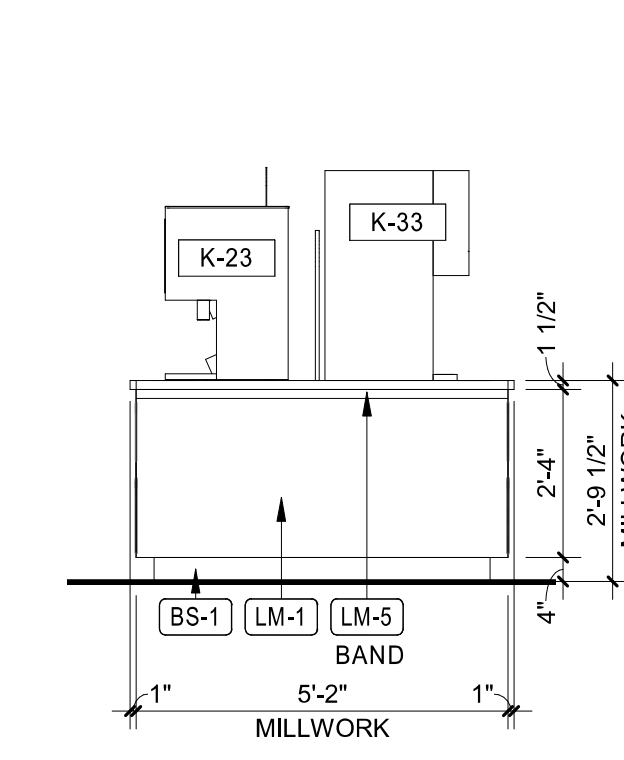
16 INTERIOR ELEVATION
3/8" = 1'-0"



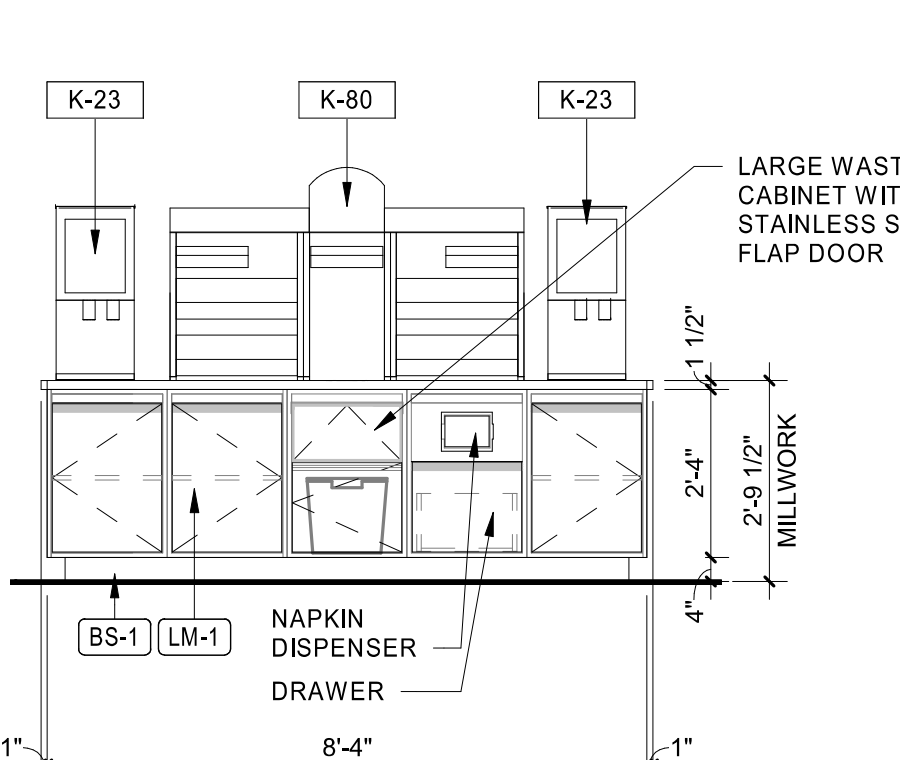
8 INTERIOR ELEVATION
3/8" = 1'-0"



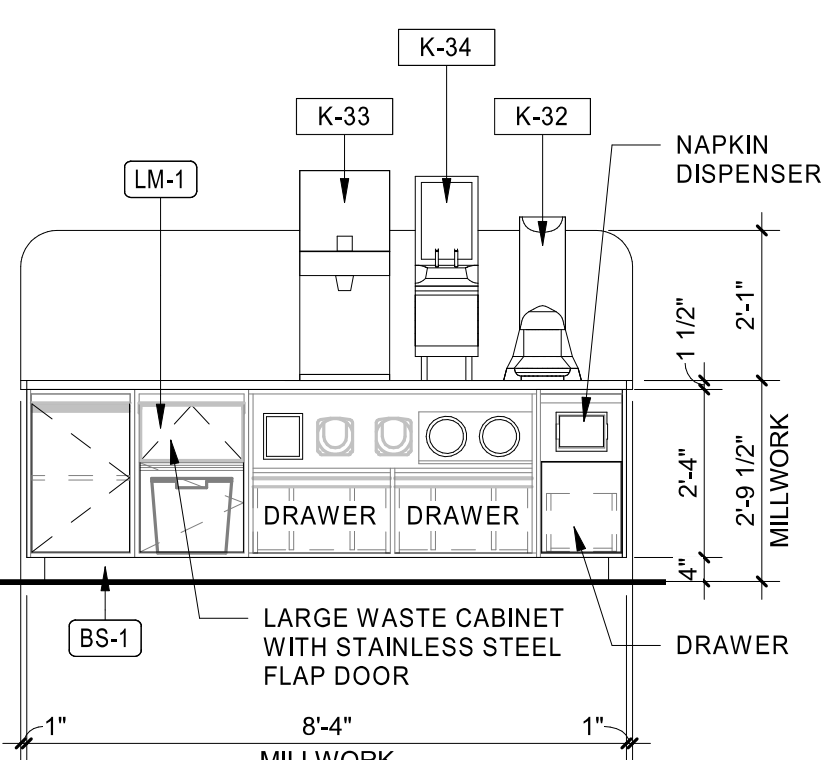
9 INTERIOR ELEVATION
3/8" = 1'-0"



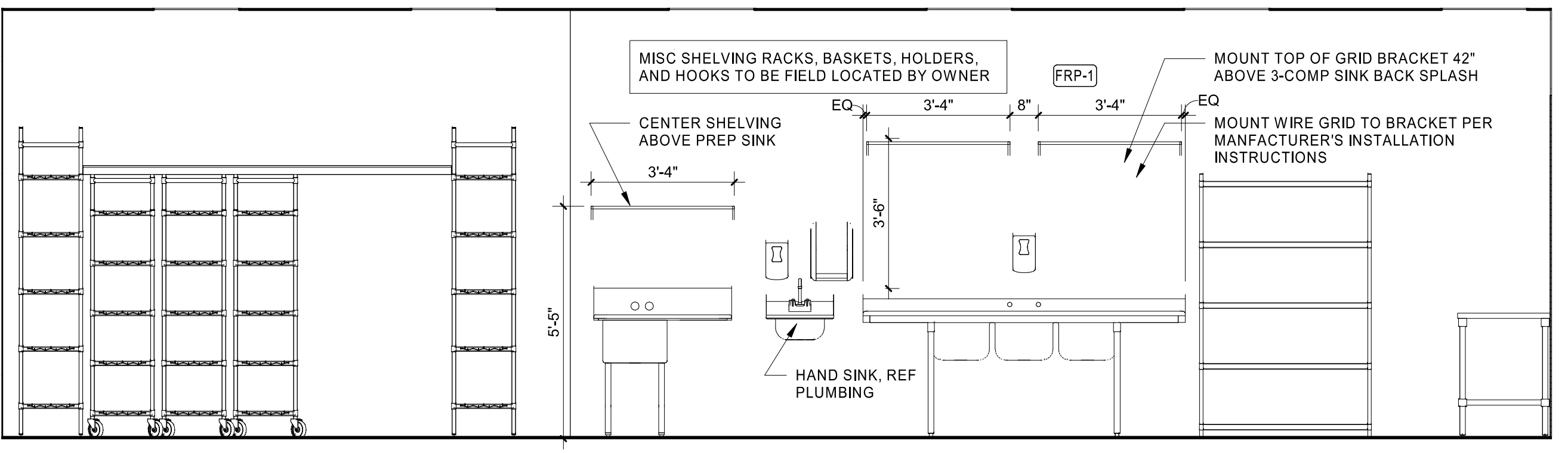
10 INTERIOR ELEVATION
3/8" = 1'-0"



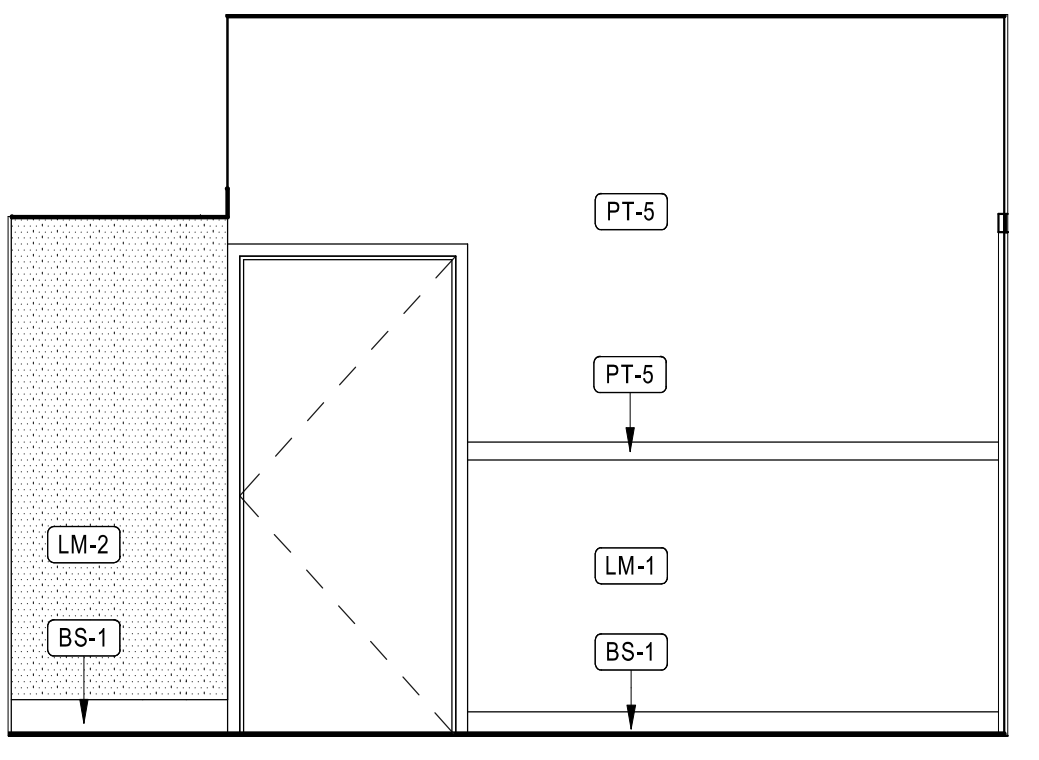
11 INTERIOR ELEVATION
3/8" = 1'-0"



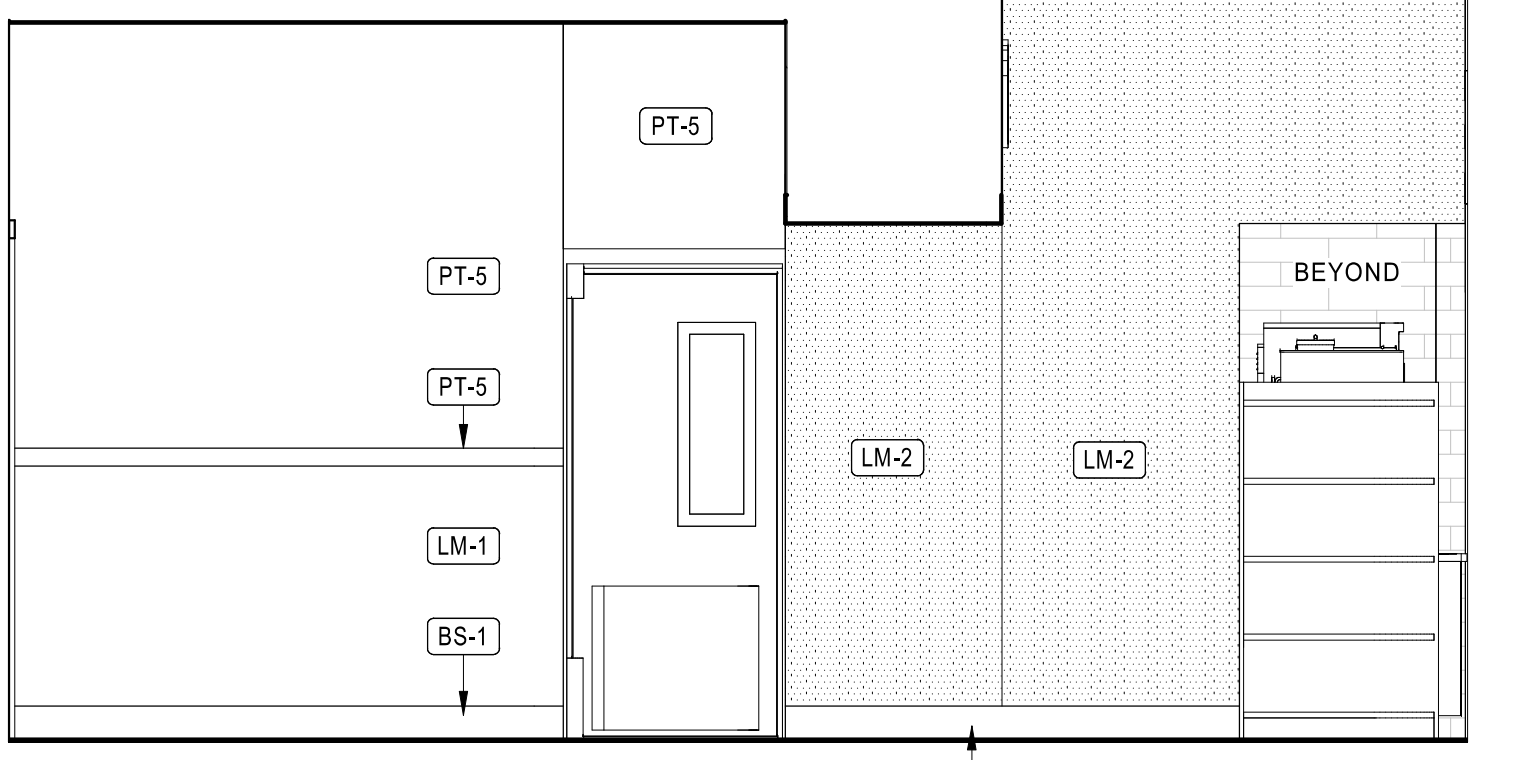
12 INTERIOR ELEVATION
3/8" = 1'-0"



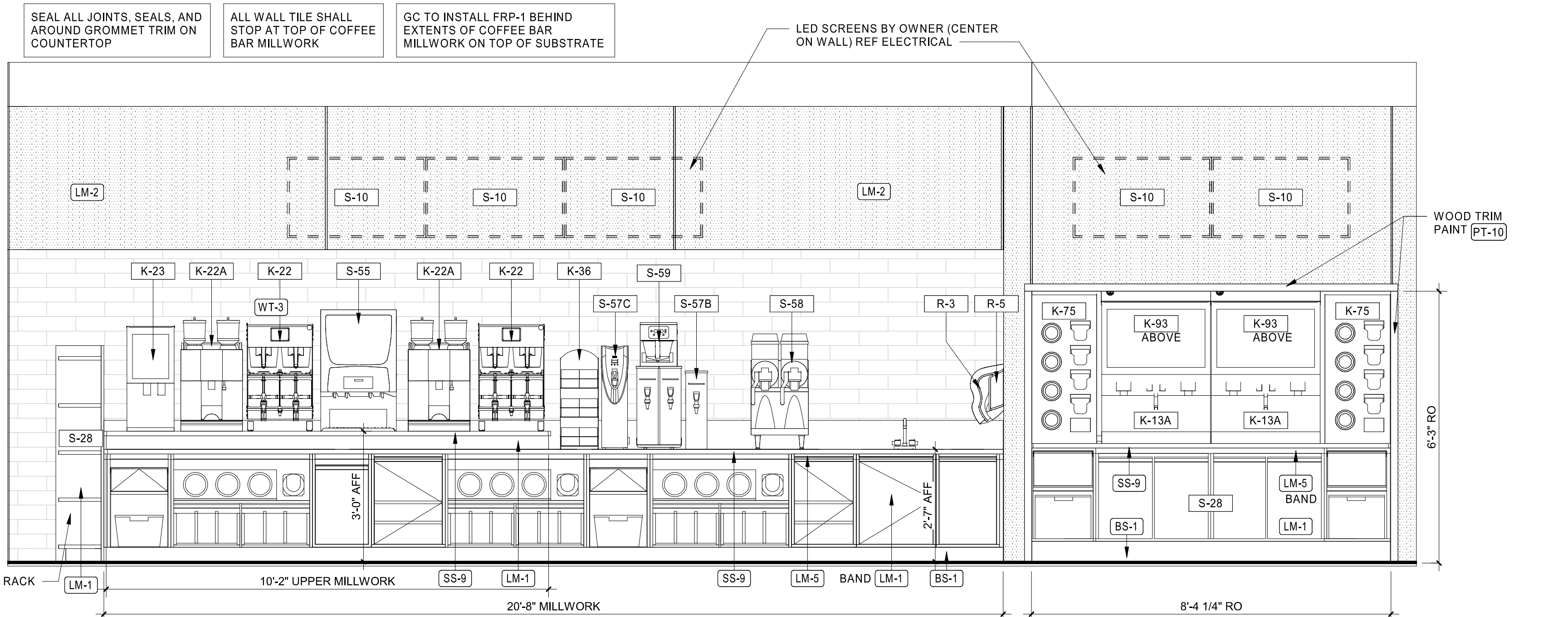
5 INTERIOR ELEVATION
3/8" = 1'-0"



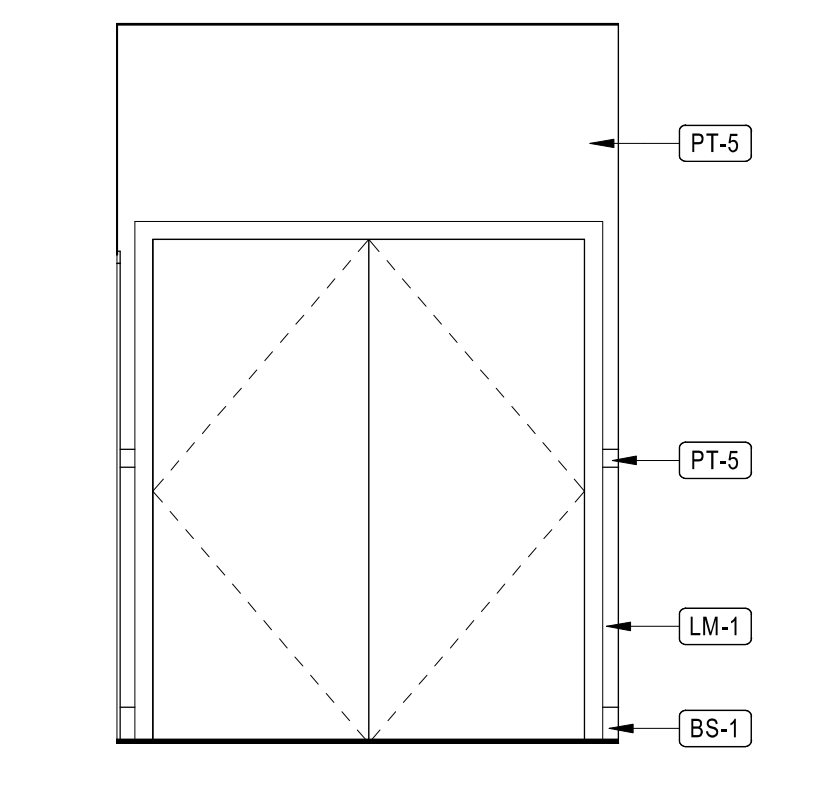
6 INTERIOR ELEVATION
3/8" = 1'-0"



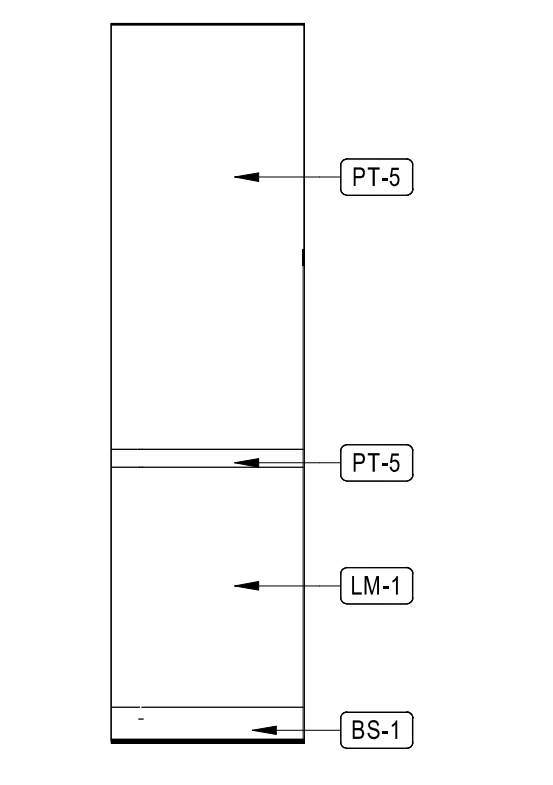
7 INTERIOR ELEVATION
3/8" = 1'-0"



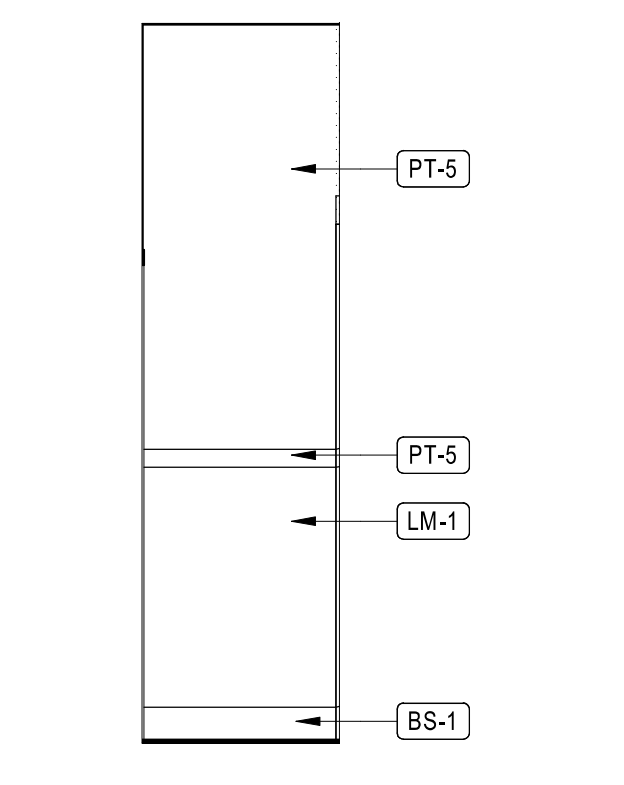
1 INTERIOR WALL FINISH ELEVATION AT PREP KITCHEN
1/2" = 1'-0"



2 INTERIOR ELEVATION
3/8" = 1'-0"



3 INTERIOR ELEVATION
3/8" = 1'-0"



4 INTERIOR ELEVATION
3/8" = 1'-0"

02/06/23 9:56:52 AM
C:\Users\mfrancis\project\Documents\2023\Bent\Physio\Drawings\Nicholson_MS_39466\01_HFA_Millwork\Interior\INT