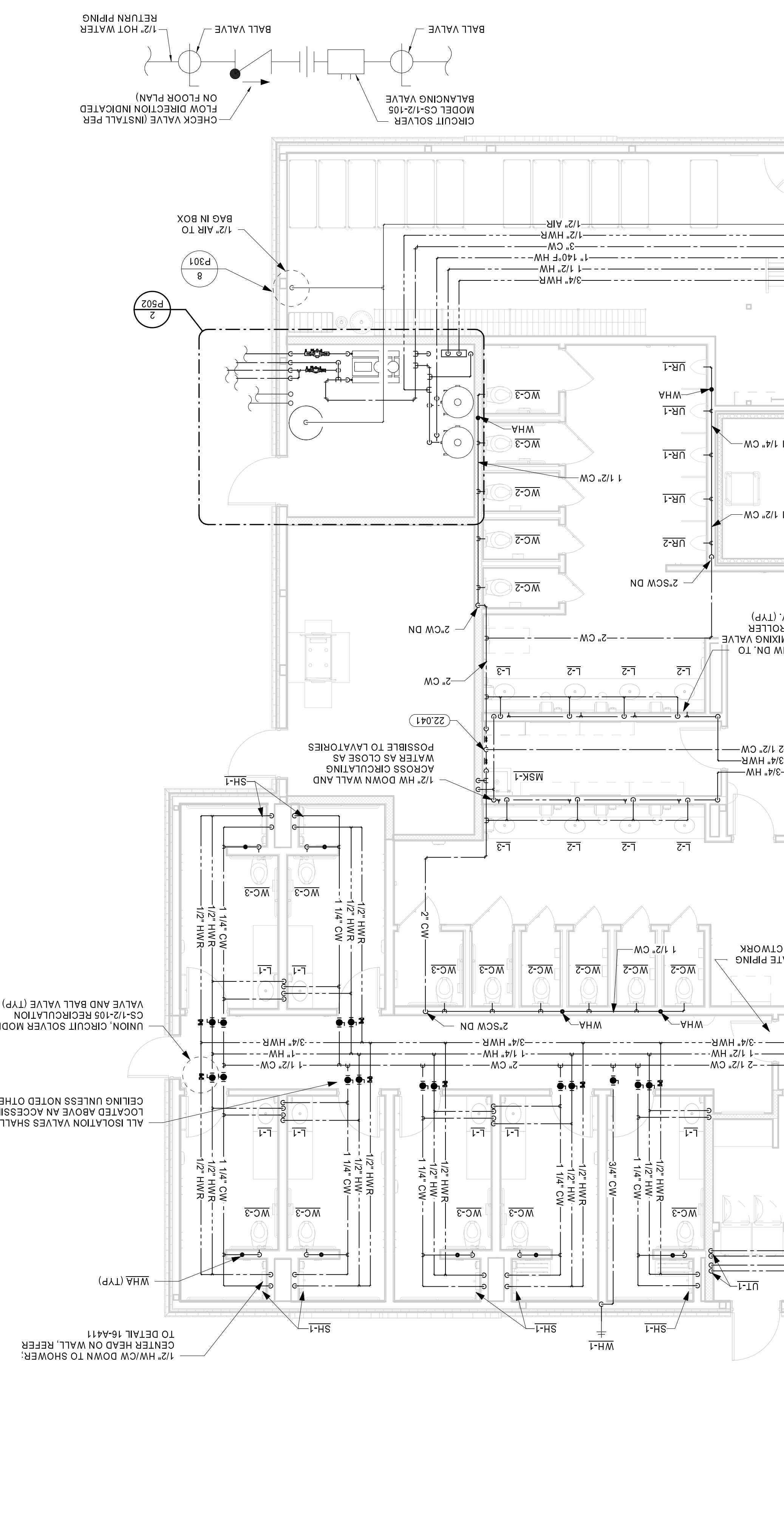


1 WATER PLAN  
 3/16" = 1'-0"

2 HOT WATER BALANCING VALVE DETAIL  
 NTS



**KEYNOTES**

22.027	3/8" FCW TO DCP PRO (K-13A) WITH ISOLATION VALVE AND BACKFLOW PREVENTER EQUAL TO WATTS SD-2 (DUAL CHECK)
22.028	1/2" FCW TO TOENMAKER (K-85) WITH ISOLATION VALVE AND BACKFLOW PREVENTER EQUAL TO WATTS SD-2 (DUAL CHECK)
22.036	LIMITED AREA FIRE PROTECTION FOR THE LAUNDRY ROOM TO BE DESIGNED IN ACCORDANCE WITH NFPA 13. INSULATING UNION, 1-1/2" RPZ BACKFLOW PREVENTER WITH GASKET ALKES WATER PRESSURE
22.041	ROUTING MAIN CW SUPPLY TO EACH PUBLIC RESTROOM TO MASTER SHUT OFF VALVES TO STOPS AT ENTRANCE TO ROOM. ROUTE BFP DRAIN LINE TO AHJ APPROVED RECEPTACLE. SIGNAGE, PLUMBING CONTRACTOR WORK
22.041	RESPECTIVE RESTROOM, LABEL EACH VALVE PER RESTROOM SUPPLIER.
22.055	1/2" SCW & HW TO MIXING VALVE EQUAL TO UNDER SINK - NO SUBSTITUTION.
22.057	1/2" FCW TO EACH OF (2) BEAN TO CUP COFFEE MAKERS (K-22A), (2) COFFEE BREWERS (K-22), BREWERS (S-57), (1) HOT WATER DISPENSER (S-57), (1) HOT WATER DISPENSER (S-59), (1) TEA DISPENSER (S-59), (1) TEA DISPENSER (S-59), (1) TEA DISPENSER (S-59), (1) TEA DISPENSER (S-59)
22.063	3/4" FCW DN, IN 2" CHASE AND ROUTE TO COFFEE BAR EQUIPMENT. REQUIREMENTS: REFER TO GENERAL NOTE 11 ADDITIONAL FROM THE VENT PORT TO DRAIN BELOW. ROUND-IN 12" A.F.F. EXTEND THE DRAIN LINE TO WATTS SD-3 AND AN ISOLATION VALVE (S-57C) WITH BACKFLOW PREVENTER EQUAL TO WATTS SD-3 (DUAL CHECK)

**GENERAL NOTES**

1. ALL PLUMBING WORK SHALL BE PERFORMED IN STRICT ACCORDANCE WITH THE LATEST EDITION OF THE PREVALENT STATE MECHANICAL PLUMBING AND BUILDING CODES AS WELL AS ALL REGULATIONS THAT MAY APPLY. IN CASE OF A CONFLICT BETWEEN THE CONTRACT DOCUMENTS AND A GOVERNING CODE OR ORDINANCE THE MORE STRINGENT STANDARD SHALL APPLY.
2. NO PIPING SHALL RUN EXPOSED IN FINISHED AREAS.
3. DOMESTIC WATER SERVICE PIPE 2" AND SMALLER ABOVE SHALL BE TYPE L-7 HARD DRAWN ASTM B88 SLS SLAB SHALL BE TYPE L-7 AND LARGER ABOVE TO UPONOR AQUAPEX.
4. DOMESTIC WATER PIPING IN THE MECHANICAL AREAS SHALL BE TYPE L-7 HARD DRAWN ASTM B88 COPPER TUBE.
5. ALL HORIZONTAL RUNS OF PE-X TUBING SHALL BE SUPPORTED BY PE-X GALVANIZED SUPPORT CHANNELS.
6. ALL PE-X STUB-OUTS SHALL BE MADE WITH COPPER STUB-OUTS HAVING A 90° TRANSMISSION FROM THE PE-X TUBING TO COPPER CONTRACTOR SUPPORT STUB-OUTS.
7. PLUMBING CONTRACTOR TO ASSEMBLY AND INSTALL PERMANENT SPRAY ASSEMBLY AND CEILING SPRAY (ITEM PROVIDED BY EQUIPMENT SUPPLIER).
8. INSULATE ALL WATER PIPING EXCEPT EXPOSED TO FIXTURES WITH 1" FIBERGLASS INSULATION BARRIER ON CLOSED CELL FLEXIBLE INSULATION EQUAL TO ARMAFLEX II.
9. RUN-OUT SIZES TO INDIVIDUAL PLUMBING FIXTURES TO BE EQUAL TO ROUGH-IN NOTED UNLESS NOTED OTHERWISE.
10. PLUMBING/PIPING IS SHOWN SCHEMATICALLY FOR FIELD MODIFICATIONS TO ROUTING MAY BE REQUIRED.
11. CONTRACTOR TO FURNISH AND INSTALL 3/8" FLEXIBLE S.S. BRANDED WATER SUPPLY LINE FOR FINAL CONNECTION TO EQUIPMENT. FLEXIBLE SUPPLY LINE SHALL ALLOW 1/2" FLEXIBLE MOVEMENT OF EQUIPMENT.
12. GAS PIPING SHALL BE SCHEDULE 40 BLACK STEEL PIPE WITH MALLEABLE IRON FITTINGS OR WELDED. VALVES AND OTHER EQUIPMENT SHALL HAVE SCREWED JOINTS OR WELDED.
13. TEST ALL LOW PRESSURE GAS PIPING FOR A PERIOD OF NOT LESS THAN TWO HOURS AT A PRESSURE OF NOT LESS THAN 60 PSIG. USING SOAP AND WATER OR SIMILAR MATERIALS AT ALL JOINTS WHEN LEAK TESTING. ALL EQUIPMENT MUST BE ISOLATED FROM THE GAS PIPING SYSTEM.
14. ALL WATER SUPPLY LINES, VENT STACK LINES, SANITARY LINES, AND OTHER EXPOSED PLUMBING LINES SHALL BE COMPLETELY SEALED AT ALL PENETRATIONS. THEN COVERED WITH A CHROME ESCUTCHEON PLATE SEALED TO WALL WITH SILICONE SEALANT.
15. REFER TO SPECIFICATIONS FOR DRAINAGE AND VENT PRESSURE TESTING PROCEDURES.
16. LOW-C-C-STORE COMPRESSED AIR PIPING SHALL BE ASTM A53 SCHEDULE 40 BLACK STEEL WITH MALLEABLE IRON FITTINGS AND TRADED JOINTS. TYPE L-7 HARD DRAWN ASTM B88 COPPER TUBE MAY BE USED IN LIEU OF BLACK STEEL.

**PLUMBING LEGEND**

FW	FILTERED WATER
HW	HOT WATER
CW	COLD WATER

**CHECKED BY:** JKR  
**DRAWN BY:** PRC  
**DOCUMENT DATE:** 2/7/2023  
**TIER:** 1180  
**PROTO CYCLE:** 04 - 2022

**ISSUE BLOCK**

1	ADD 1	02/16/23
---	-------	----------

**STIPULATION FOR REUSE**

THIS DOCUMENT IS THE PROPERTY OF HARRISON FRENCH & ASSOCIATES, LTD. IT IS TO BE USED ONLY FOR THE PROJECT AND SITE SPECIFICALLY IDENTIFIED HEREIN. IT IS NOT TO BE REPRODUCED, COPIED, OR TRANSMITTED IN ANY FORM OR BY ANY MEANS, ELECTRONIC OR MECHANICAL, INCLUDING PHOTOCOPYING, RECORDING, OR BY ANY INFORMATION STORAGE AND RETRIEVAL SYSTEM, WITHOUT THE WRITTEN PERMISSION OF HARRISON FRENCH & ASSOCIATES, LTD. THE USER OF THIS DOCUMENT SHALL BE RESPONSIBLE FOR OBTAINING ALL NECESSARY PERMITS AND APPROVALS FROM THE APPROPRIATE AUTHORITIES. HARRISON FRENCH & ASSOCIATES, LTD. SHALL NOT BE LIABLE FOR ANY DAMAGES, INCLUDING CONSEQUENTIAL DAMAGES, ARISING FROM THE USE OF THIS DOCUMENT.

**GENERAL NOTES**

1. ALL PLUMBING WORK SHALL BE PERFORMED IN STRICT ACCORDANCE WITH THE LATEST EDITION OF THE PREVALENT STATE MECHANICAL PLUMBING AND BUILDING CODES AS WELL AS ALL REGULATIONS THAT MAY APPLY. IN CASE OF A CONFLICT BETWEEN THE CONTRACT DOCUMENTS AND A GOVERNING CODE OR ORDINANCE THE MORE STRINGENT STANDARD SHALL APPLY.

2. NO PIPING SHALL RUN EXPOSED IN FINISHED AREAS.

3. DOMESTIC WATER SERVICE PIPE 2" AND SMALLER ABOVE SHALL BE TYPE L-7 HARD DRAWN ASTM B88 SLS SLAB SHALL BE TYPE L-7 AND LARGER ABOVE TO UPONOR AQUAPEX.

4. DOMESTIC WATER PIPING IN THE MECHANICAL AREAS SHALL BE TYPE L-7 HARD DRAWN ASTM B88 COPPER TUBE.

5. ALL HORIZONTAL RUNS OF PE-X TUBING SHALL BE SUPPORTED BY PE-X GALVANIZED SUPPORT CHANNELS.

6. ALL PE-X STUB-OUTS SHALL BE MADE WITH COPPER STUB-OUTS HAVING A 90° TRANSMISSION FROM THE PE-X TUBING TO COPPER CONTRACTOR SUPPORT STUB-OUTS.

7. PLUMBING CONTRACTOR TO ASSEMBLY AND INSTALL PERMANENT SPRAY ASSEMBLY AND CEILING SPRAY (ITEM PROVIDED BY EQUIPMENT SUPPLIER).

8. INSULATE ALL WATER PIPING EXCEPT EXPOSED TO FIXTURES WITH 1" FIBERGLASS INSULATION BARRIER ON CLOSED CELL FLEXIBLE INSULATION EQUAL TO ARMAFLEX II.

9. RUN-OUT SIZES TO INDIVIDUAL PLUMBING FIXTURES TO BE EQUAL TO ROUGH-IN NOTED UNLESS NOTED OTHERWISE.

10. PLUMBING/PIPING IS SHOWN SCHEMATICALLY FOR FIELD MODIFICATIONS TO ROUTING MAY BE REQUIRED.

11. CONTRACTOR TO FURNISH AND INSTALL 3/8" FLEXIBLE S.S. BRANDED WATER SUPPLY LINE FOR FINAL CONNECTION TO EQUIPMENT. FLEXIBLE SUPPLY LINE SHALL ALLOW 1/2" FLEXIBLE MOVEMENT OF EQUIPMENT.

12. GAS PIPING SHALL BE SCHEDULE 40 BLACK STEEL PIPE WITH MALLEABLE IRON FITTINGS OR WELDED. VALVES AND OTHER EQUIPMENT SHALL HAVE SCREWED JOINTS OR WELDED.

13. TEST ALL LOW PRESSURE GAS PIPING FOR A PERIOD OF NOT LESS THAN TWO HOURS AT A PRESSURE OF NOT LESS THAN 60 PSIG. USING SOAP AND WATER OR SIMILAR MATERIALS AT ALL JOINTS WHEN LEAK TESTING. ALL EQUIPMENT MUST BE ISOLATED FROM THE GAS PIPING SYSTEM.

14. ALL WATER SUPPLY LINES, VENT STACK LINES, SANITARY LINES, AND OTHER EXPOSED PLUMBING LINES SHALL BE COMPLETELY SEALED AT ALL PENETRATIONS. THEN COVERED WITH A CHROME ESCUTCHEON PLATE SEALED TO WALL WITH SILICONE SEALANT.

15. REFER TO SPECIFICATIONS FOR DRAINAGE AND VENT PRESSURE TESTING PROCEDURES.

16. LOW-C-C-STORE COMPRESSED AIR PIPING SHALL BE ASTM A53 SCHEDULE 40 BLACK STEEL WITH MALLEABLE IRON FITTINGS AND TRADED JOINTS. TYPE L-7 HARD DRAWN ASTM B88 COPPER TUBE MAY BE USED IN LIEU OF BLACK STEEL.



**CHECKED BY:** JKR  
**DRAWN BY:** PRC  
**DOCUMENT DATE:** 2/7/2023  
**TIER:** 1180  
**PROTO CYCLE:** 04 - 2022

**ISSUE BLOCK**

1	ADD 1	02/16/23
---	-------	----------

**Love's**  
 STORE NUMBER: 860  
 159' EXIT 1  
 NICHOLSON, MS 39466  
 JOB NUMBER: 03-23-2009

**HARRISON FRENCH & ASSOCIATES, LTD.**  
 1705 S. Whalon Blvd., Suite 3  
 Knoxville, Tennessee 37712  
 419.273.7780  
 www.hfa-ac.com

**STIPULATION FOR REUSE**

THIS DOCUMENT IS THE PROPERTY OF HARRISON FRENCH & ASSOCIATES, LTD. IT IS TO BE USED ONLY FOR THE PROJECT AND SITE SPECIFICALLY IDENTIFIED HEREIN. IT IS NOT TO BE REPRODUCED, COPIED, OR TRANSMITTED IN ANY FORM OR BY ANY MEANS, ELECTRONIC OR MECHANICAL, INCLUDING PHOTOCOPYING, RECORDING, OR BY ANY INFORMATION STORAGE AND RETRIEVAL SYSTEM, WITHOUT THE WRITTEN PERMISSION OF HARRISON FRENCH & ASSOCIATES, LTD. THE USER OF THIS DOCUMENT SHALL BE RESPONSIBLE FOR OBTAINING ALL NECESSARY PERMITS AND APPROVALS FROM THE APPROPRIATE AUTHORITIES. HARRISON FRENCH & ASSOCIATES, LTD. SHALL NOT BE LIABLE FOR ANY DAMAGES, INCLUDING CONSEQUENTIAL DAMAGES, ARISING FROM THE USE OF THIS DOCUMENT.

**GENERAL NOTES**

1. ALL PLUMBING WORK SHALL BE PERFORMED IN STRICT ACCORDANCE WITH THE LATEST EDITION OF THE PREVALENT STATE MECHANICAL PLUMBING AND BUILDING CODES AS WELL AS ALL REGULATIONS THAT MAY APPLY. IN CASE OF A CONFLICT BETWEEN THE CONTRACT DOCUMENTS AND A GOVERNING CODE OR ORDINANCE THE MORE STRINGENT STANDARD SHALL APPLY.

2. NO PIPING SHALL RUN EXPOSED IN FINISHED AREAS.

3. DOMESTIC WATER SERVICE PIPE 2" AND SMALLER ABOVE SHALL BE TYPE L-7 HARD DRAWN ASTM B88 SLS SLAB SHALL BE TYPE L-7 AND LARGER ABOVE TO UPONOR AQUAPEX.

4. DOMESTIC WATER PIPING IN THE MECHANICAL AREAS SHALL BE TYPE L-7 HARD DRAWN ASTM B88 COPPER TUBE.

5. ALL HORIZONTAL RUNS OF PE-X TUBING SHALL BE SUPPORTED BY PE-X GALVANIZED SUPPORT CHANNELS.

6. ALL PE-X STUB-OUTS SHALL BE MADE WITH COPPER STUB-OUTS HAVING A 90° TRANSMISSION FROM THE PE-X TUBING TO COPPER CONTRACTOR SUPPORT STUB-OUTS.

7. PLUMBING CONTRACTOR TO ASSEMBLY AND INSTALL PERMANENT SPRAY ASSEMBLY AND CEILING SPRAY (ITEM PROVIDED BY EQUIPMENT SUPPLIER).

8. INSULATE ALL WATER PIPING EXCEPT EXPOSED TO FIXTURES WITH 1" FIBERGLASS INSULATION BARRIER ON CLOSED CELL FLEXIBLE INSULATION EQUAL TO ARMAFLEX II.

9. RUN-OUT SIZES TO INDIVIDUAL PLUMBING FIXTURES TO BE EQUAL TO ROUGH-IN NOTED UNLESS NOTED OTHERWISE.

10. PLUMBING/PIPING IS SHOWN SCHEMATICALLY FOR FIELD MODIFICATIONS TO ROUTING MAY BE REQUIRED.

11. CONTRACTOR TO FURNISH AND INSTALL 3/8" FLEXIBLE S.S. BRANDED WATER SUPPLY LINE FOR FINAL CONNECTION TO EQUIPMENT. FLEXIBLE SUPPLY LINE SHALL ALLOW 1/2" FLEXIBLE MOVEMENT OF EQUIPMENT.

12. GAS PIPING SHALL BE SCHEDULE 40 BLACK STEEL PIPE WITH MALLEABLE IRON FITTINGS OR WELDED. VALVES AND OTHER EQUIPMENT SHALL HAVE SCREWED JOINTS OR WELDED.

13. TEST ALL LOW PRESSURE GAS PIPING FOR A PERIOD OF NOT LESS THAN TWO HOURS AT A PRESSURE OF NOT LESS THAN 60 PSIG. USING SOAP AND WATER OR SIMILAR MATERIALS AT ALL JOINTS WHEN LEAK TESTING. ALL EQUIPMENT MUST BE ISOLATED FROM THE GAS PIPING SYSTEM.

14. ALL WATER SUPPLY LINES, VENT STACK LINES, SANITARY LINES, AND OTHER EXPOSED PLUMBING LINES SHALL BE COMPLETELY SEALED AT ALL PENETRATIONS. THEN COVERED WITH A CHROME ESCUTCHEON PLATE SEALED TO WALL WITH SILICONE SEALANT.

15. REFER TO SPECIFICATIONS FOR DRAINAGE AND VENT PRESSURE TESTING PROCEDURES.

16. LOW-C-C-STORE COMPRESSED AIR PIPING SHALL BE ASTM A53 SCHEDULE 40 BLACK STEEL WITH MALLEABLE IRON FITTINGS AND TRADED JOINTS. TYPE L-7 HARD DRAWN ASTM B88 COPPER TUBE MAY BE USED IN LIEU OF BLACK STEEL.