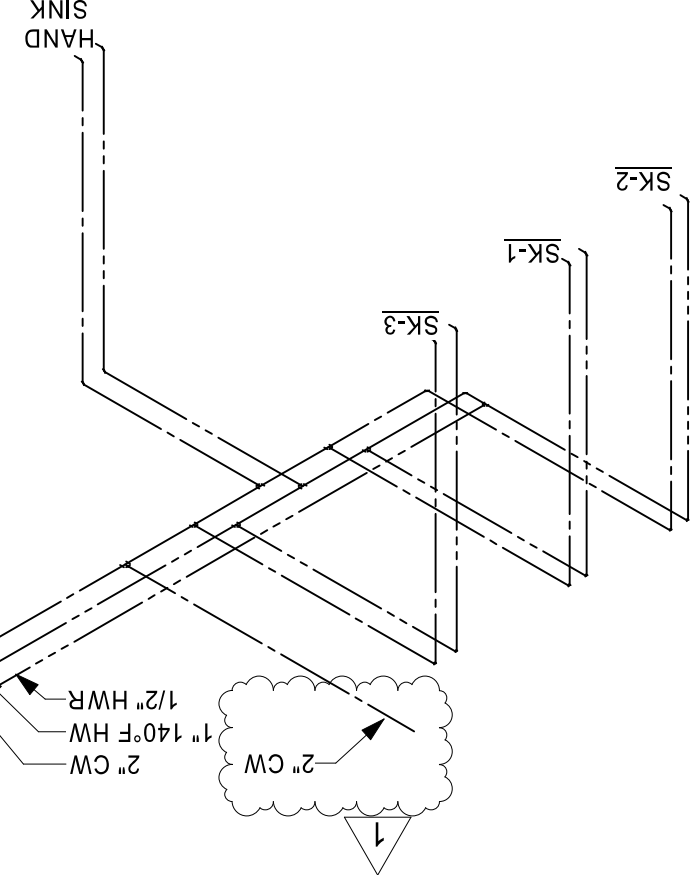
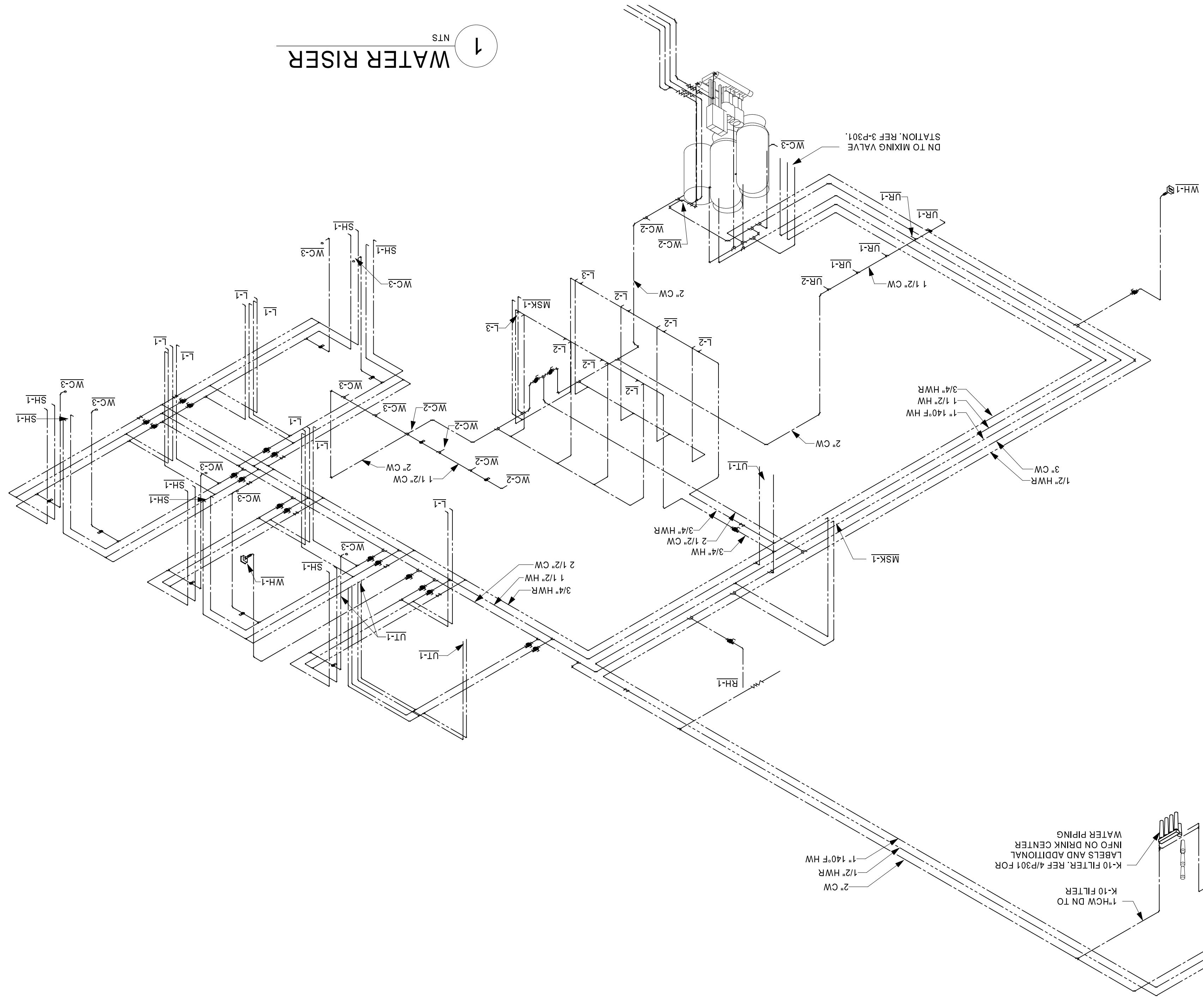


DOMESTIC WATER PIPING IN THE MECHANICAL ROOM SHALL BE COPPER - NO PEX ALLOWED.



**KEYNOTES**

22.022	BACKFLOW PREVENTER (REDUCED PRESSURE ZONE TYPE) INSTALL VALVE TO BE ACCESSIBLE FOR SERVICE ACCESS AND SECURE DRAIN LINE AGAINST WALL AND ROUTE TO FLOOR SINK VIA AIR GAP FITTING. 2" SIZE BFP FOR HOUSE PROTECTION, 1" SIZE BFP FOR FLEETLAND LINES. BACKFLOW PREVENTER ARE TO BE STACKED ON TOP OF ONE ANOTHER.
22.023	(2)" AIR LINES UNDERGROUND. REFER TO SITE PLAN P101 FOR CONTINUATION.
22.024	INSTALL SHUT OFF VALVE AND FLOW INDICATORS ON RISER. OWNER PROVIDED FOR CONTRACTOR INSTALLATION.
22.029	(2)" WATER LINES UNDERGROUND. REFER TO SITE PLAN P101 FOR CONTINUATION. ONE SERVES GASOLINE ISLANDS AND AIRWATER ISLAND). SERVES DIESEL ISLANDS. ONE SERVES FUTURE BOOSTER PUMP AND BLADDER TANK. VERIFY NECESSITY WITH CONSTRUCTION MANAGER.
22.064	WHEN DOMESTIC WATER BOOSTER PUMP IS INSTALLED ENSURE ALL DOMESTIC WATER LINES FEEDING EXTERIOR SOURCES (FUEL ISLANDS, TREE SHOP, ECT) ARE FEED THROUGH THE BOOSTER PUMP AND TAPPED FROM THE DISCHARGE SIDE OF THE PUMP.



CHECKED BY:	JKR
DRAWN BY:	PRC
DOCUMENT DATE:	2/7/2023
TIER:	180
PROTO CYCLE:	04 - 2022

ISSUE BLOCK	1 ADD 1	02/16/23
-------------	---------	----------

**Loves'**  
 STORE NUMBER: 860  
 1-59, EXIT 1  
 NICHOLSON, MS 39466  
 JOB NUMBER: 4323-3009  
 TIER 1 180

**STIPULATION FOR REUSE**  
 THIS DOCUMENT IS PREPARED FOR USE ON A SPECIFIC SITE AT THE LOCATION INDICATED. IT IS NOT TO BE REPRODUCED OR TRANSMITTED IN ANY FORM OR BY ANY MEANS, ELECTRONIC OR MECHANICAL, INCLUDING PHOTOCOPYING, RECORDING, OR BY ANY INFORMATION STORAGE AND RETRIEVAL SYSTEM, WITHOUT THE WRITTEN PERMISSION OF HARRISON FRENCH & ASSOCIATES, LTD.

HARRISON FRENCH & ASSOCIATES, LTD.  
 1479.273.780  
 1705 S. Walton Blvd., Suite 3  
 Phenixville, Arkansas 72712  
 www.hfa-ac.com