

STIPULATION FOR REUSE
 THESE DRAWINGS ARE PREPARED FOR
 USE ON A SPECIFIC SITE AT
 THE LOCATION AND DATE INDICATED.
 CONTRACTORS SHALL VERIFY THE EXISTENCE
 AND ACCURACY OF ALL INFORMATION
 SHOWN ON THESE DRAWINGS. NO
 PROJECT SITE VISIT AT A LATER TIME
 SHALL BE CONSIDERED AS A WAIVER OF
 LIABILITY OR ANOTHER PROJECT.
 THESE DRAWINGS ARE THE PROPERTY OF
 HARRISON FRENCH & ASSOCIATES, LTD.
 NO PART OF THESE DRAWINGS SHALL BE
 REPRODUCED OR TRANSMITTED IN ANY
 FORM OR BY ANY MEANS, ELECTRONIC
 OR MECHANICAL, INCLUDING PHOTOCOPYING,
 RECORDING, OR BY ANY INFORMATION
 STORAGE AND RETRIEVAL SYSTEM, WITHOUT
 THE WRITTEN PERMISSION OF HARRISON
 FRENCH & ASSOCIATES, LTD.

Loves
 STORE NUMBER: 860
 I-59, EXIT 1
 NICHOLSON, MS 39466
 JOB NUMBER: 03-23-30009
 TIER 1 180

ISSUE BLOCK

NO.	DATE	DESCRIPTION

CHECKED BY: CAR
 DRAWN BY: SED
 DOCUMENT DATE: 2/7/2023
 PROTO: TIER 1 180
 PROTO CYCLE: Q4 - 2022



2023.02.07 14:22:54-06'00"

POWER PLAN

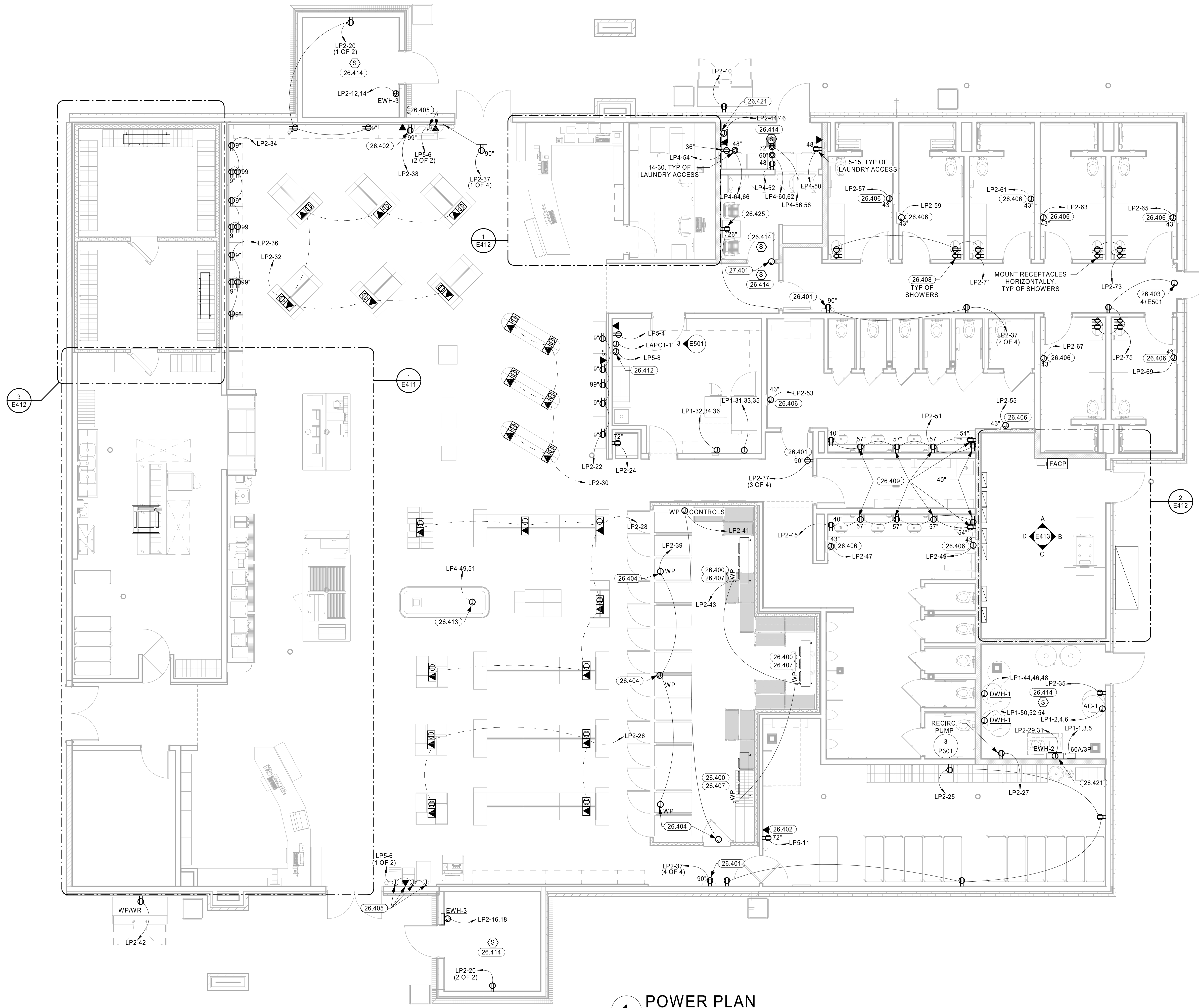
SHEET:
E401

GENERAL NOTES

- * = COORDINATE CONDUIT QUANTITY & SIZE WITH FUEL CONTRACTOR.
- RESPONSIBILITY OF E.C. AND FUEL CONTRACTOR: E.C. SHALL FURNISH AND INSTALL CONDUITS SHOWN FROM PANELS AND FUEL POWER CENTER (F-1) TO EXTERIOR OF BUILDING AS INDICATED. FUEL CONTRACTOR SHALL EXTEND ALL INGROUND CONDUITS AND TERMINATE FROM THAT POINT TO ALL ISLANDS. FUEL CONTRACTOR SHALL HOOK UP ALL ITEMS EXCEPT HORN AND INTERCOM, G.C. SHALL FURNISH ALL SEAL-OFFS, WIRE-WAYS, & BREAKERS INSIDE BUILDING INCLUDING FUEL SYSTEM ITEMS. G.C. SHALL HOOK UP ALL WIRING AT PANEL. COORDINATE FUEL SYSTEM ITEMS.
- BRANCH CIRCUITS ARE INDICATED AS ONE CIRCUIT HOME RUNS WITH INDIVIDUAL NEUTRALS. A MAXIMUM OF THREE CIRCUITS (MAXIMUM OF THREE PHASE CONDUCTORS) MAY BE GROUPED IN A SINGLE CONDUIT. WHERE MULTIPLE CIRCUITS ARE LOCATED IN THE SAME RACEWAY, JUNCTION BOX OR ENCLOSURE, NEUTRALS SHALL BE MARKED OR LABELED TO INDICATE WHICH CIRCUIT THEY ARE ASSOCIATED WITH. SEE SPECIFICATION SECTION "LOW VOLTAGE ELECTRICAL POWER CONDUCTORS AND CABLES" FOR ADDITIONAL INFORMATION.
- A GROUND CONDUCTOR SIZED PER N.E.C. ARTICLE 250 IS REQUIRED IN ALL CONDUITS.
- FOR CONNECTION REQUIREMENTS TO MECHANICAL UNITS, SEE MECHANICAL EQUIPMENT CONNECTION SCHEDULE.
- ALL PIPING, CONDUIT, AND OUTLET BOXES (ELECTRIC, TELEPHONE, COMPUTER, ETC.) IN THE RATED WALLS SHALL BE CONSTRUCTED OF NON-COMBUSTIBLE MATERIAL.
- OUTLET BOXES (ELECTRIC, TELEPHONE, COMPUTER, ETC.) SHALL BE LIMITED TO TWO OUTLET BOXES PER STUD SPACE. OUTLET BOXES ON OPPOSITE SIDES OF THE RATED WALLS SHALL BE SEPARATED BY A HORIZONTAL DISTANCE OF 24 INCHES.
- FIELD VERIFY THE EXACT LOCATION OF ALL FLOOR BOXES WITH ARCHITECT PRIOR TO ROUGH-IN.
- PROVIDE ALL ISOLATED GROUND CIRCUITS WITH INDIVIDUAL NEUTRAL CONDUCTORS AND EQUIPMENT GROUND CONDUCTORS.

KEYNOTES

- | | |
|--------|--|
| 26.400 | PROVIDE ALL INTERLOCKING BETWEEN EVAPORATOR AND CONDENSER FOR A COMPLETE AND OPERATIONAL SYSTEM AS REQUIRED. |
| 26.401 | RECEPTACLE FOR FLY TRAP. MOUNT AT HEIGHT INDICATED ON PLANS. |
| 26.402 | RECEPTACLE & DATA PORTS RECESSED IN WALL FOR MONITORS. USE AN ARLINGTON INDUSTRIES RECESSED DOUBLE GANG ELECTRICAL BOX (TVBS505) TO MOUNT STANDARD DUPLEX RECEPTACLE, DATA PORTS, AND WALL PLATE AT HEIGHT INDICATED. |
| 26.403 | JUNCTION BOX FOR DOOR ALARM ABOVE CEILING. VERIFY LOCATION WITH EQUIPMENT INSTALLER. REFER TO ALARM CONTACT INSTALLATION DETAIL FOR ADDITIONAL INFORMATION. |
| 26.404 | JUNCTION BOX FOR CONNECTION OF MERCHANTISER LIGHTS AND DOOR HEAT TRACE. BOX LOCATION SHALL NOT INTERFERE WITH DOOR OPERATION. FINAL CONNECTION TO MERCHANTISER'S LIGHTS/HEAT TRACE SHALL BE BY OTHERS. |
| 26.405 | SINGLE GANG BOX(ES) 9" AFF FOR A.T.M., LOTTO MACHINE, (AND/OR) COIN CLOUD POWER AND PHONE LINE. |
| 26.406 | HAND DRYER CONNECTION. COORDINATE EXACT LOCATION AND ELEVATION WITH ARCHITECTURAL DRAWINGS PRIOR TO ROUGH-IN. |
| 26.407 | EQUIPMENT DISCONNECT SWITCHES SHALL BE SUPPLIED AND PREWIRED FOR CONNECTION TO COOLER/FREEZER/STORAGE PACKAGE. ELECTRICAL CONTRACTOR SHALL MAKE ALL FINAL CONNECTIONS. E.C. SHALL COORDINATE CIRCUIT BREAKER WITH MANUFACTURER FOR PROPER FEEDER SIZING TO PANELBOARD. |
| 26.408 | AT EACH SHOWER ROOM, MOUNT ONE FEED-THRU TYPE OF GFCI RECEPTACLE AT 40" AFF. MOUNT ONE STANDARD RECEPTACLE AT 90" AFF CONNECTED TO PROTECTED LOAD SIDE OF GFCI RECEPTACLE AT 40". UPPER RECEPTACLE IS FOR WALL-MOUNTED RECIRCULATION FANS. |
| 26.409 | RECEPTACLE RECESSED IN WALL FOR PAPER TOWEL DISPENSER. USE AN ARLINGTON INDUSTRIES RECESSED ELECTRICAL BOX (DVFR1W) TO MOUNT STANDARD RECEPTACLE AND WALL PLATE AT HEIGHT INDICATED. BOX SHALL BE CENTERED ON PAPER TOWEL DISPENSER. REF ARCHITECTURAL FOR HORIZONTAL ROUGH-IN DIMENSIONS. |
| 26.412 | RECEPTACLE AND DATA BOX FOR FUEL MONITORING EQUIPMENT. REFERENCE FUEL MONITOR PANEL ELEVATION FOR MOUNTING HEIGHTS. |
| 26.413 | FLUSH FLOOR BOX FOR POWER TO ISLAND MERCHANTISER. PROVIDE WITH HINGED DOOR. SEE SPECIFICATIONS FOR MORE DETAIL. |
| 26.414 | INSTALL LOW VOLTAGE SINGLE STATION SMOKE DETECTORS IN CEILING. SMOKE DETECTORS TO BE POWERED FROM FIRE ALARM CONTROL PANEL. REFERENCE SPECIFICATIONS SECTION 284000 FOR MORE INFORMATION. |
| 26.421 | MOUNT FACTORY PROVIDED DISCONNECT FOR UNIT HEATER NEXT TO UNIT AT 8'-0" AFF. |
| 26.425 | USB RECEPTACLE. MOUNT AT HEIGHT INDICATED ON DRAWINGS. RECEPTACLES SHALL HAVE DUAL USB CHARGING PORTS (HUBBEL USB15X2). |
| 27.401 | CONNECT DOOR HOLDERS TO FIRE ALARM CONTROL PANEL. DOOR HOLDERS SHALL BE LISTED FOR 24V AND SUPPLIED WITH DOOR HARDWARE PACKAGE. |



1 POWER PLAN
 3/16" = 1'-0"

07/2023 1:46:30 PM
 C:\Users\jfrancis\Documents\2023 Revit Projects\Loves_Arch\0301_HFA_Summary\POWER PLAN.rvt
 4/26/2023 1:46:30 PM