

**LIGHTING NOTES**

- A. EMERGENCY BATTERY LIGHTING UNITS AND EXIT SIGNS SHALL BE CONNECTED TO THE UN-SWITCHED HOT LEG OF THE BRANCH CIRCUIT.
- B. FIXTURES SHOWN HATCHED ARE THE 'E' TYPE OF THE FIXTURE AND HAVE AN EMERGENCY BATTERY. CONNECT TO AN UN-SWITCHED HOT CONDUCTOR.
- C. EMERGENCY LIGHTING- WALL FIXTURE: 12" BELOW FINISHED CEILING OR +10'-0" IN AREAS OF EXPOSED STRUCTURE UNLESS NOTED OTHERWISE. REMOTE HEAD FIXTURE: HEADS CENTERED ABOVE DOOR OPENING +9'-0" UNLESS NOTED OTHERWISE.
- D. REFERENCE SHEET E611 FOR LIGHT FIXTURE SCHEDULE.

**KEYNOTES**

26.301	SPEAKERS BY OWNER.
26.303	MOUNT EMERGENCY BATTERY PACK INSIDE STORE IN ACCESSIBLE SPACE ABOVE CEILING. CONNECT UN-SWITCHED HOT LEG OF BRANCH CIRCUIT TO BATTERY PACK. CONNECT SWITCHED LEG OF BRANCH CIRCUIT ROUTED THROUGH CONTACTOR TO LIGHT FIXTURE.
26.350	ROUTE THROUGH LIGHTING CONTACTOR.
26.351	J-BOX ABOVE CEILING FOR CONNECTION TO BUILDING MOUNTED SIGN. VERIFY HEIGHT AND LOCATION WITH SIGNAGE VENDOR AND ARCHITECTURAL ELEVATIONS.
26.356	INSTALL ADDITIONAL LIGHT FIXTURE IN WALK-IN COOLER/FREEZER. CONNECT TO OTHER LIGHTING EQUIPMENT PROVIDED WITH COOLER. SEE ENLARGED POWER PLANS. PROVIDE SWITCH ONLY IF NOT PROVIDED WITH COOLER/FREEZER.
26.452	LIGHT FIXTURES FURNISHED WITH EXHAUST HOOD. EQUIPMENT MANUFACTURER SHALL BE RESPONSIBLE FOR PROVIDING SUFFICIENT ILLUMINATION TO COMPLY WITH LOCAL REQUIREMENTS. CONTRACTOR SHALL PROVIDE DEVICES AND RELATED CIRCUITRY FOR PROPER OPERATION PER MANUFACTURER'S RECOMMENDATIONS.

STIPULATION FOR REUSE  
THE DRAWINGS ARE PREPARED FOR USE ON A SPECIFIC SITE AT THE LOCATION AND DATE SPECIFICALLY NOTED THEREON. THESE DRAWINGS ARE NOT TO BE REUSED FOR ANY OTHER PROJECT WITHOUT THE WRITTEN PERMISSION OF HARRISON FRENCH & ASSOCIATES, LTD. ANY REUSE OF THESE DRAWINGS FOR ANY OTHER PROJECT WITHOUT THE WRITTEN PERMISSION OF HARRISON FRENCH & ASSOCIATES, LTD. IS STRICTLY PROHIBITED AND MAY BE CONSIDERED A VIOLATION OF THE LAW.

**Loves.**  
STORE NUMBER: 860  
I-59, EXIT 1  
NICHOLSON, MS 39466  
JOB NUMBER: 03-23-30009

ISSUE BLOCK

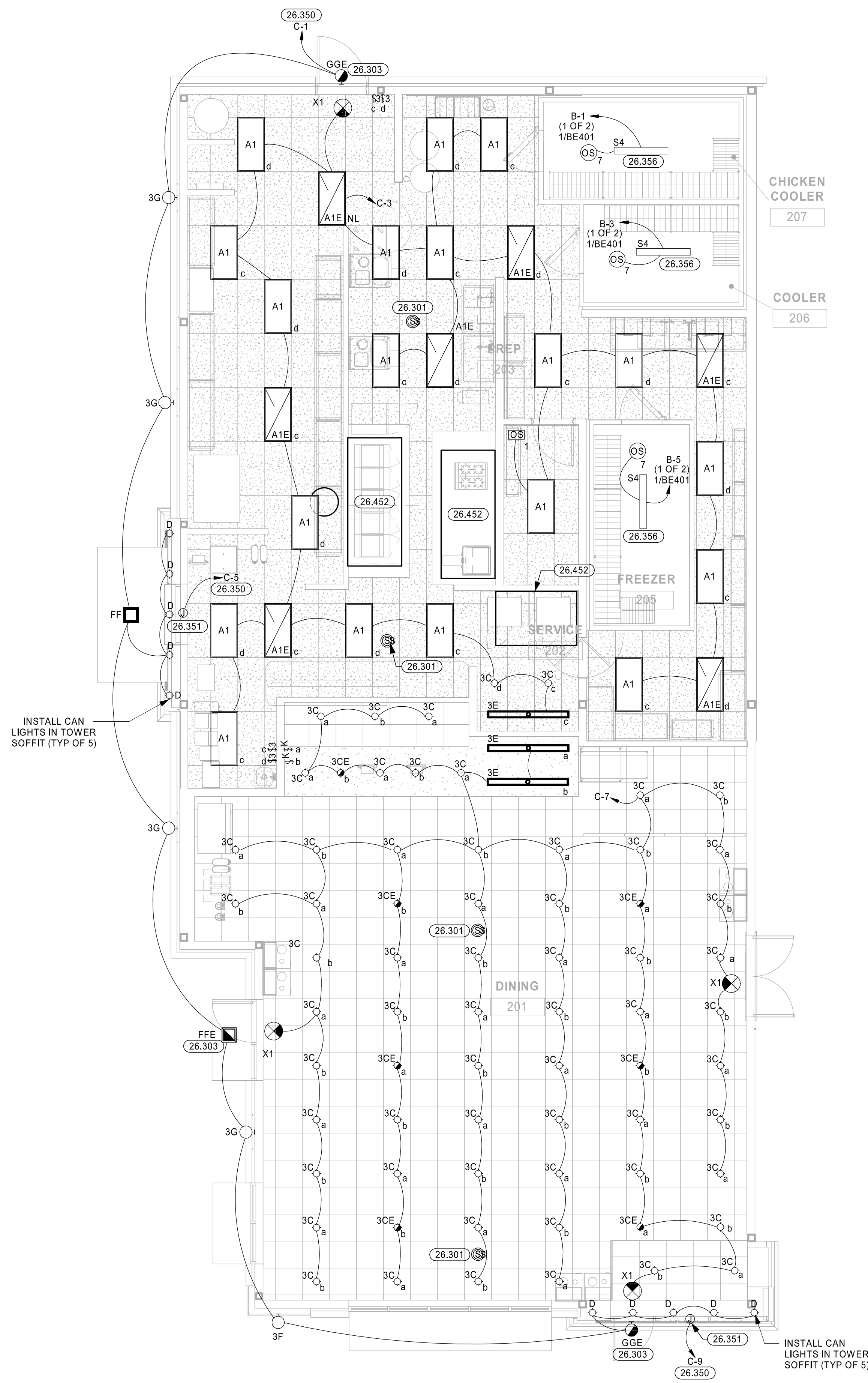

CHECKED BY: CAR  
DRAWN BY: SED  
DOCUMENT DATE: 2/7/2023  
PROTO: T1-90  
PROTO CYCLE: Q3 - 2022



2023.02.07 14:24:00-06'00'

**LIGHTING PLAN**

SHEET:  
**BGE301**



① LIGHTING PLAN  
3/16" = 1'-0"

07/2023 14:45:16 PM  
C:\Users\jcastaneda\Documents\2023\BGE301\BGE301.dwg  
4/8/2023 14:07:10 PM