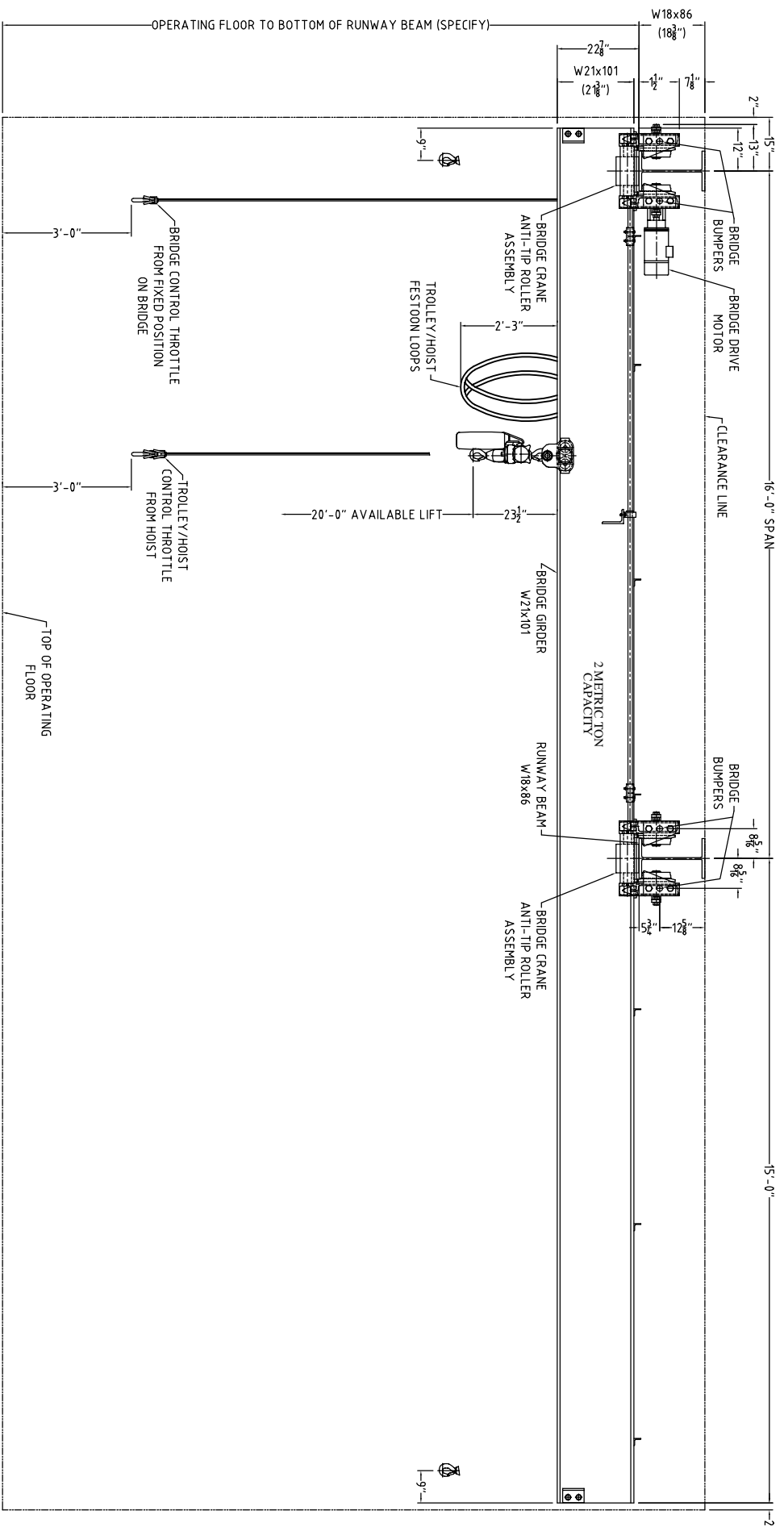


PLAN VIEW

CUSTOMER NOTE:
 1. IT IS HIGHLY RECOMMENDED THAT THE EXISTING W12 COLUMNS SHOULD BE STRENGTHENED AS THEY ARE ACTUALLY FACING THE WRONG DIRECTION TO ACCEPT THE IMPACT OF THE BRIDGE CRANE.
 2. AS A DESIGN NOTE & EASE OF ERECTING THE RUNWAY BEAMS THAT THE USE OF RUNWAY BEAM SEAT ANGLES BE USED UNDER THE RUNWAY BEAMS.

PRELIMINARY
 FOR PROPOSAL PURPOSES ONLY
 DO NOT FABRICATE.



FRONT ELEVATION

2 METRIC TON BRIDGE CRANE SPECIFICATION

CRANE SPAN	16'-0"
BRIDGE CAPACITY	2 METRIC TONS (4410#)
CLASS	CMAA CLASS "C" - HAZARDOUS ATMOSPHERE CRANE & HOIST EQUIPPED WITH MECHANICAL SPARK RESISTANT FEATURES
BRIDGE WGT.	5200#
TROLLEY/HOIST WGT.	140#
TOTAL WGT.	5340#
MAX. WHEEL LOAD	PER PAIR (NO IMPACT)
BRIDGE SPEED	7100#
TROLLEY SPEED	50 FPM VARIABLE
HOIST SPEED (LOADED)	46 FPM VARIABLE
HOIST SPEED (UNLOADED)	9 FPM VARIABLE
HOIST	JD NEUHAUS #PROFI-02T-LM
HOIST SUPPLY	90-110 PSIG
AIR CONSUMPTION	BRIDGE: 55 CFM TROLLEY: 22 CFM HOIST: 53 CFM
CONTROL	BRIDGE: PENDANT THROTTLE FIXED POSITION
CONTROL	TROLLEY/HOIST: PENDANT THROTTLE FROM HOIST
COATINGS	SAFETY YELLOW ENAMEL

DO NOT SCALE DRAWING
 ALL DIMENSIONS ARE IN INCHES
 THIRD ANGLE PROJECTION
 UNLESS NOTED OTHERWISE REMOVE ALL BURS AND SHARP CORNERS APPROX. 0.03 x 45° CHAMFER OR 0.03 RADII.
 UNLESS NOTED OTHERWISE TOLERANCES:
 FRACTIONS = ±1/16
 X.X = ±0.08
 X.XX = ±0.03
 X.XXX = ±0.006
 ANGLES = ±1/2°



DRAWING TITLE
 LAYOUT, PROPOSAL,
 CRANE, BRIDGE,
 2-TON, STOHLTHAVEN,

REV.	DCN NO.	DESCRIPTION	DRAWN	DATE	APPR.	DATE
P1	DCN-AB707	NEW DRAWING	ML	10/25/22	RMB	10/25/22

BY	DATE
ML	10/25/22
JW	10/25/22
RMB	10/25/22

SIZE	DRAWING NUMBER	REV.
D	SQ47215-B99-001	P1

SCALE: 1" = 1' SHEET 1 OF 1