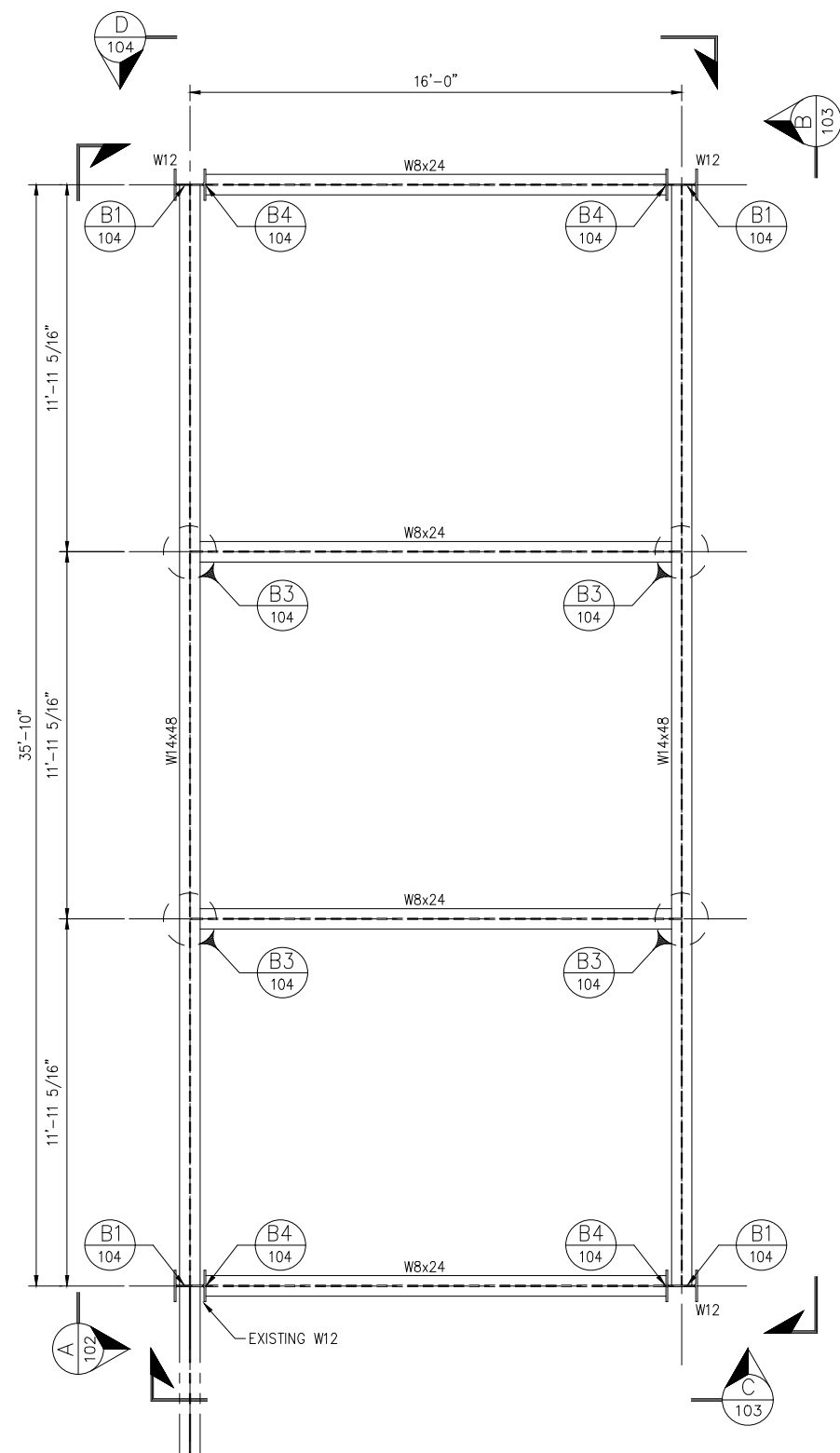


STRUCTURAL FRAMING PLAN EL. 100'-0" TO 118'-0"  
SCALE: 3/8"=1'-0"

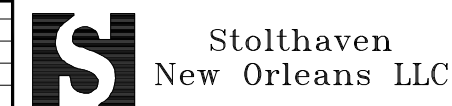


STRUCTURAL FRAMING PLAN EL. 118'-6" TO 125'-0"  
SCALE: 3/8"=1'-0"

REFERENCE DRAWINGS	
DRAWING NUMBER	DRAWING TITLE

GENERAL NOTES			

REVISIONS				
NO.	DATE	BY	DESCRIPTION	



THIS DRAWING IS THE PROPERTY OF STOLTHAVEN TERMINALS, A DIVISION OF STOLT-NIELSEN TRANSPORTATION GROUP INC. AND IS CONFIDENTIAL AND MUST NOT BE MADE PUBLIC OR COPIED WITHOUT PRIOR WRITTEN PERMISSION AND IS SUBJECT TO RETURN ON DEMAND. ALL RIGHTS OF INVENTION OR DESIGN ARE RESERVED.

"C" TANK BATTERY				
STRUCTURAL FRAMING PLAN				
DRAWN BY	K.J.L.	SCALE	5/4"=1'-0"	CAD NO.
CHK'D	KUD	DATE COMPLETED		DRAWING NO.
LAST UPDATE	03/03/01	APP'D		D-203-S-101
				REV
				A