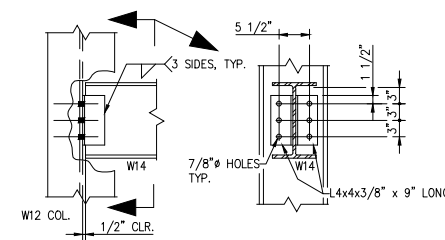
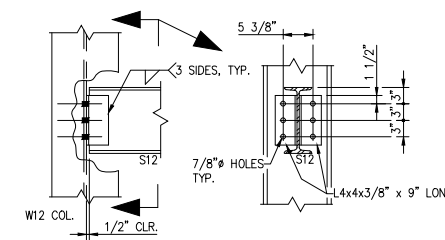


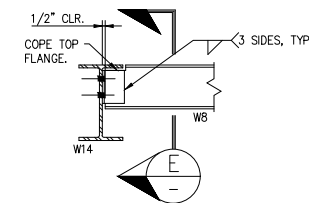
ELEVATION D
SCALE: 3/8" = 1'-0"
NOTE:
SEE DRAWING 104 FOR DETAILS



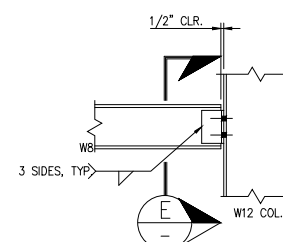
DETAIL B1
SCALE: 3/4" = 1'-0"



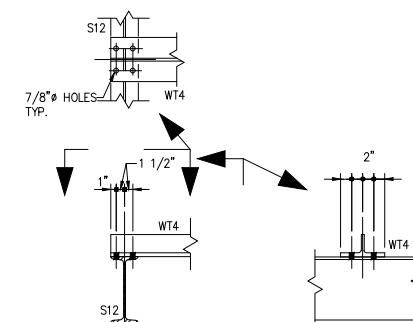
DETAIL B2
SCALE: 3/4" = 1'-0"



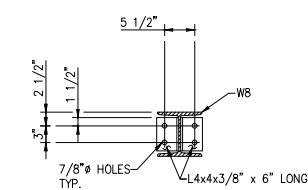
DETAIL B3
SCALE: 3/4" = 1'-0"



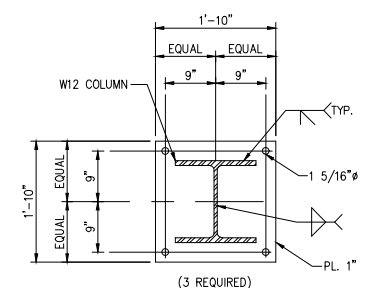
DETAIL B4
SCALE: 3/4" = 1'-0"



DETAIL B5
SCALE: 3/4" = 1'-0"



DETAIL E
SCALE: 3/4" = 1'-0"



BASE PLATE DETAIL
SCALE: NONE

REFERENCE DRAWINGS	
DRAWING NUMBER	DRAWING TITLE

GENERAL NOTES	

REVISIONS			
NO.	DATE	BY	DESCRIPTION



THIS DRAWING IS THE PROPERTY OF STOLTHAVEN TERMINALS, A DIVISION OF STOLT-NIELSEN TRANSPORTATION GROUP INC. AND IS CONFIDENTIAL AND MUST NOT BE MADE PUBLIC OR COPIED WITHOUT PRIOR WRITTEN PERMISSION AND IS SUBJECT TO RETURN ON DEMAND. ALL RIGHTS OF INVENTION OR DESIGN ARE RESERVED.

"C" TANK BATTERY			
STRUCTURAL FRAMING ELEVATIONS, SECTIONS AND DETAILS			
DESIGNED BY	K.J.L.	SCALE	3/4" = 1'-0"
DRAWN BY	KUD	DATE COMPLETED	03/03/01
APP'D		DRAWING NO.	D-203-S-104
REV			