

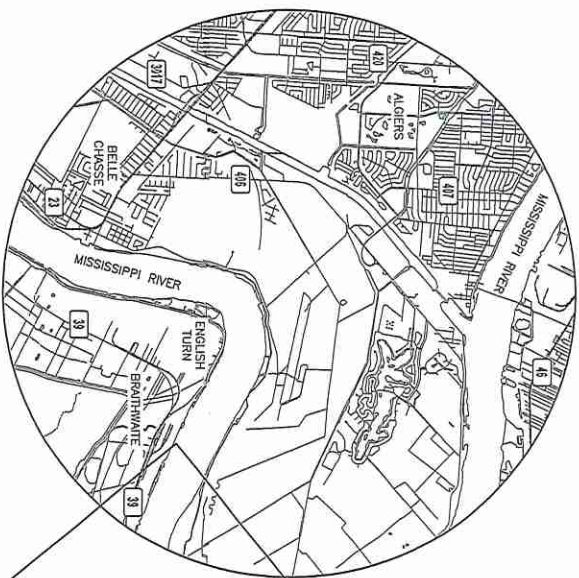
STATE MAP
SCALE: NTS

STOLTHAVEN - BRAITHWAITE TANK FARM C MANIFOLD IMPROVEMENTS

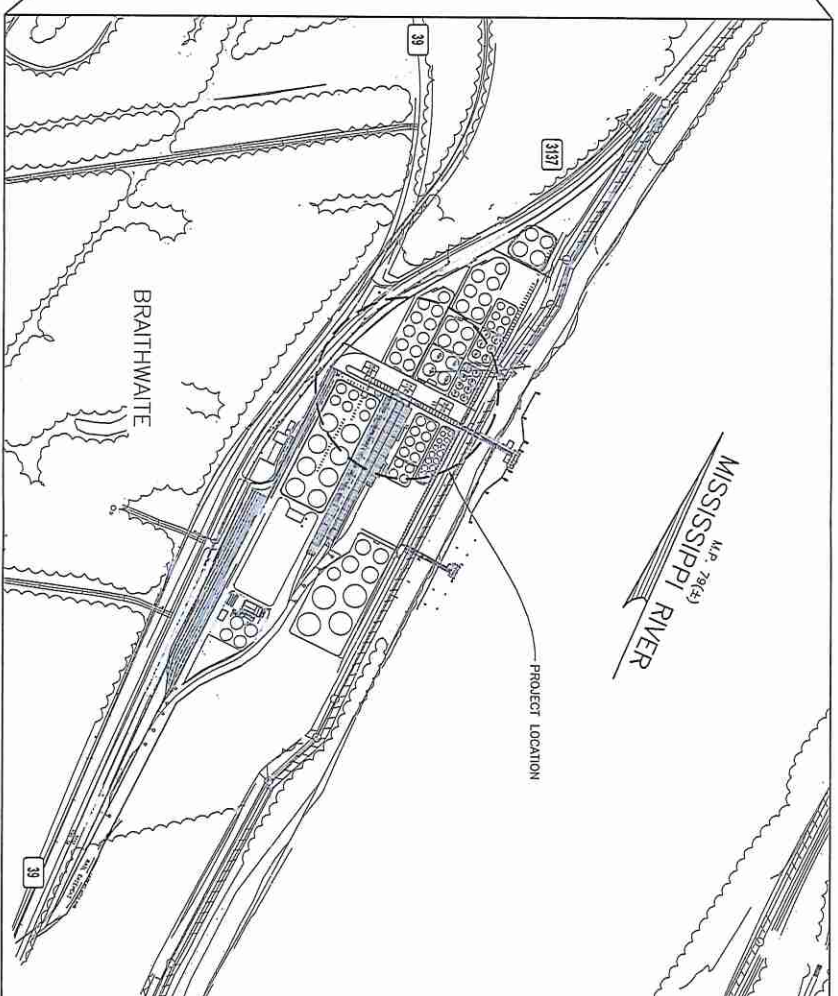
Stolthaven Project No. 2022-XXXX

IEC Project No. 22-024

47215
SI



VICINITY MAP
SCALE: 1" = 1 MILE



PROJECT LOCATION MAP
SCALE: 1" = 500'

DRAWING NUMBER	DRAWING TITLE
01.00	TITLE SHEET MAPS AND DRAWING INDEX
02.00	GENERAL NOTES AND LEGEND
03.00	OVERALL SITE PLAN
04.00	EXISTING SITE PHOTOS
STRUCTURAL	
S1.00	MANIFOLD C FRAMING ELEVATION
S1.01	MANIFOLD C FRAMING ELEVATION AND DETAILS
S1.02	FRAMING PLAN MODIFICATIONS AND DETAILS
REFERENCE	
D-203-S-101	C' TANK BATTERY STRUCTURAL FRAMING PLAN
D-203-S-102	C' TANK BATTERY STRUCTURAL FRAMING ELEVATION
D-203-S-103	C' TANK BATTERY STRUCTURAL FRAMING ELEVATIONS
D-203-S-104	STRUCTURAL FRAMING ELEVATION, SECTIONS, DETAILS

REV	DATE	DESCRIPTION	BY	APP
A	08/10/22	PRELIMINARY - FOR REVIEW		

<p>PRELIMINARY - FOR REVIEW ONLY</p> <p>08/10/2022</p> <p>THESE PLANS HAVE BEEN PREPARED UNDER THE SUPERVISION OF CINDY M. GALLO, P.E. (LA No. 43357) IN THE OFFICE OF INFINITY ENGINEERING CONSULTANTS, LLC.</p>	<p>STOLTHAVEN - BRAITHWAITE</p> <p>Engineering Consultants, LLC Civil/Structural/Electrical/Instrumentation Metairie, LA www.infinityec.com 504-884-6848</p>	<p>TANK FARM C MANIFOLD IMPROVEMENTS</p> <p>TITLE SHEET MAPS AND DRAWING INDEX</p>
---	--	--

SCALE	NOTED
PROJECT NO. 22-024	
RELEASE DATE -	
DESIGNED BY - B. BARBELEUX	
DRAWN BY - D. MURKIN	
CHECKED BY - C. GALLO	
APPROVED BY -	

DRAWING NO.	22-024-G1.00
REV	A

GENERAL NOTES:

1. THESE DRAWINGS REPRESENT THE MODIFICATION OF THE HOSE MANIFOLD STRUCTURE WITHIN TANK FARM C AT THE EXISTING STOLTHOVEN TERMINAL IN BRAITHTWAITE, LA. THE CONTRACTOR SHALL VERIFY THE EXISTING STRUCTURE AND PROVIDE THE NECESSARY REPAIRS AND MODIFICATIONS TO THE STRUCTURE TO SUPPORT THE INSTALLATION OF THE CRANE AND REQUIRED STEEL FRAMING IS INCLUDED IN THE SCOPE OF WORK. THE ITEMS INCLUDED HEREIN HAVE BEEN DESIGNED FOR THE FOLLOWING LOADS:

- A. DEAD LOADS:
 - FILETS
 - CABLE TRAYS 21.25 LBS/FT
- B. LIVE LOADS:
 - WARES, ASSUMED LINES ARE FULL WITH PRODUCTS OF SG NO GREATER THAN 1.25 5000 LBS
- C. WIND LOADS:
 - WIND (3-SECOND GUST) 137 MPH
 - WIND (10-MINUTE SUSTAINED) 108 MPH
 - RISK CATEGORY I
 - EXPOSURE CLASS D
- D. SEISMIC:
 - RISK CATEGORY I
 - SITE CLASS E
 - SEISMIC CATEGORY E
 - SEISMIC COEFFICIENT 0.094
 - SI (PERIOD=1.04) 0.051

4. DESIGN AND CONSTRUCTION SHALL COMPLY WITH THE PROJECT SPECIFICATIONS, THESE GENERAL NOTES, AND ALL APPLICABLE STATE AND LOCAL CODES.
5. THE STOLTHOVEN FACILITY SHALL REMAIN IN OPERATION DURING ALL CONSTRUCTION ACTIVITIES. IN NO EVENT SHALL CONSTRUCTION INHIBIT THE CONTINUING OPERATION OF TANK FARM C.
6. CONTRACTOR SHALL MAINTAIN STRICT CONTROL AT ALL TIMES TO PREVENT ANY FORM OF WATER POLLUTION, REMOVAL AND CLEANUP OF ANY SPILL SHALL BE IMMEDIATE AND AT CONTRACTOR'S EXPENSE. A SUPPLY OF ABSORBENT MATERIALS SHALL BE MAINTAINED ON-SITE BY THE CONTRACTOR AT ALL TIMES.
7. ANY DAMAGE, DISTURBANCE, OR OTHER IMPAIRMENT OF EXISTING FACILITIES SHALL BE PROMPTLY REPAIRED OR REPLACED BY THE CONTRACTOR AS APPROVED BY AND AT NO ADDITIONAL COST TO THE OWNER.
8. CONTRACTOR SHALL REMOVE CONSTRUCTION MATERIAL AND DEBRIS FROM THE SITE DURING AND AT THE COMPLETION OF WORK, OR AS DIRECTED BY OWNER.
9. SITE ACCESS AND LAYDOWN AREA SHALL BE AS DIRECTED BY THE OWNER.
10. THE CONTRACTOR IS RESPONSIBLE FOR SAFETY PRECAUTIONS, MEANS, METHODS, TECHNIQUES, SEQUENCES OR PROCEDURES REQUIRED FOR PERFORMANCE OF THE WORK, INCLUDING BUT NOT LIMITED TO SHORING, SCAFFOLDING, AND ANY ERECTION METHODS.
11. THE CONTRACTOR WILL BE RESPONSIBLE FOR ALL LAYOUT AND SURVEYING REQUIRED FOR THE CONSTRUCTION AS SHOWN ON THE DRAWINGS.
12. ALL EXISTING DIMENSIONS AND ELEVATIONS SHOWN ON THE STRUCTURAL DRAWINGS SHALL BE VERIFIED BY THE CONTRACTOR PRIOR TO FABRICATION AND CONTRACTOR SHALL NOTIFY OWNER OF ANY DISCREPANCIES.
13. SHOULD ANY OF THE DETAILED INSTRUCTIONS SHOWN ON THE PLANS CONFLICT WITH THE STRUCTURAL NOTES, THE SPECIFICATIONS, OR WITH EACH OTHER, THE STRICTEST PROVISION SHALL GOVERN. COORDINATE WITH ALL DRAWINGS FOR INFORMATION RELATED TO STRUCTURAL WORK.

STRUCTURAL NOTES:

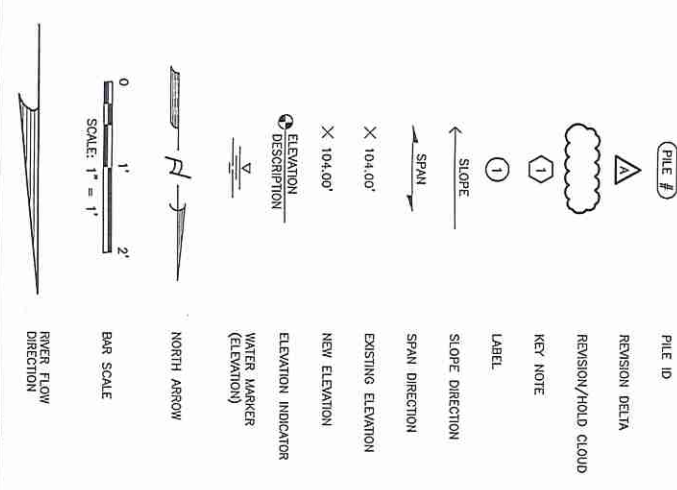
1. WHERE APPLICABLE, ALL DESIGN LOADS USED COMPLY WITH THE 2015 INTERNATIONAL BUILDING CODE AND ASCE 7-10, 2010.
2. FABRICATION AND ERECTION OF STRUCTURAL STEEL SHALL CONFORM TO THE AISC "CODE OF STANDARD PRACTICE FOR STEEL BUILDING AND BRIDGES", DATED APRIL 14, 2010.
 - A. STRUCTURAL STEEL, ANGLES, CHANNELS (UNS) ASTM A36 (MIN)
 - B. WIDE FLANGE BEAMS ASTM A992
 - C. HSS ASTM A500, GR. B
 - D. WELDING ELECTRODES E70XX SERIES
 - E. STEEL PLATE ASTM A572, 50KSI (MIN)
 - F. BOLTS, HOT DIP GALVANIZED (UNS) ASTM F1554 (4" MIN)
3. ALL NEW AND MODIFIED STEEL SHALL BE SURFACE BLASTED (NEAR WHITE) IN ACCORDANCE WITH THE LATEST SSPC SPECIFICATIONS AND COATED PER SPECIFICATIONS UNLESS NOTED OTHERWISE. AFTER ERECTION, CONTRACTOR SHALL TOUCH UP ALL FIELD WELDS AND DAMAGED COATING AREAS DUE TO HANDLING TO PROVIDE A FINISHED FULLY COATED PRODUCT.
4. MEMBERS SMALLER THAN W18 SHALL HAVE A MINIMUM OF (2) BOLTS PER LEG, FOR A TOTAL OF (4) BOLTS PER CONNECTION (MIN) AND BOLTS SHALL BE 3/4" MINIMUM. MEMBERS W18 AND LARGER SHALL HAVE A MINIMUM OF (3) BOLTS PER LEG, FOR A TOTAL OF (6) BOLTS PER CONNECTION (MIN) AND BOLTS SHALL BE 3/4" MINIMUM.
5. ALL STRUCTURES ARE DESIGNED TO BE SELF-SUPPORTING AND STABLE AFTER ERECTION IS FULLY COMPLETED. IT IS SOLELY THE CONTRACTOR'S RESPONSIBILITY TO DETERMINE ERECTION PROCEDURE AND SEQUENCE AND TO ENSURE THE SAFETY OF ALL STRUCTURES AND THEIR COMPONENT PARTS DURING ERECTION. THIS INCLUDES THE ADDITION OF WHATEVER SHORING, SHEETING, TEMPORARY BRACING, GUTS, OR THE DOWNS WHICH MIGHT BE NECESSARY. SUCH MATERIAL SHALL REMAIN THE CONTRACTOR'S PROPERTY AFTER THE COMPLETION OF THE PROJECT.

CRANE SPECIFICATION:

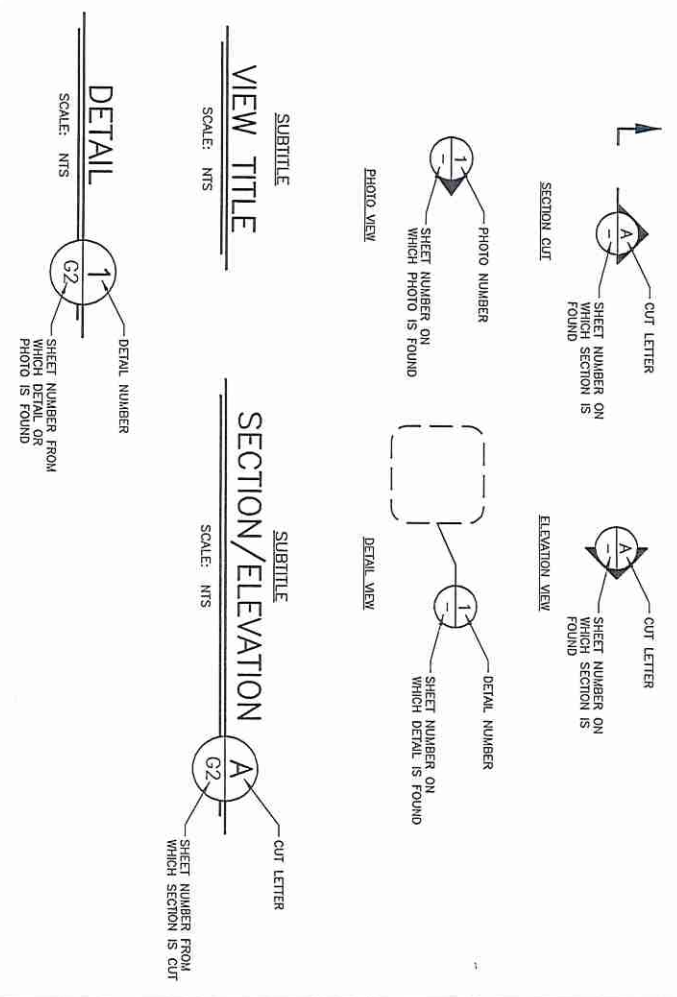
1. THE 2 TON PNEUMATIC CRANE SPECIFIED IN THESE DRAWINGS IS THE PRODUCT OF XXXXX. THE PURCHASE OF THESE ELEMENTS SHALL BE COORDINATED WITH:
 - NAME _____
 - TITLE _____
 - PHONE _____
 - EMAIL _____
2. SHOULD AN ALTERNATE CRANE SYSTEM BE PROPOSED, IT SHALL MEET THE FOLLOWING PERFORMANCE REQUIREMENTS:
 - A. CAPACITY: 2 TON
 - B. SPAN: 18'
 - C. LIFTING HEIGHT: 30'
 - D. CLASSIFICATION: CLASS 1, DIV 2

HOLD

PLAN LAYOUT SYMBOLS AND CALLOUTS



DETAIL, SECTION & ELEVATION CALLOUTS



REV	DATE	DESCRIPTION	BY	APP
A	08/10/22	PRELIMINARY - FOR REVIEW	PROJ/CAG	

PRELIMINARY - FOR REVIEW ONLY
08/10/2022

THESE PLANS HAVE BEEN PREPARED UNDER THE SUPERVISION OF CINDY M. GALLO, P.E. (LA No. 43357) IN THE OFFICE OF INFINITY ENGINEERING CONSULTANTS, LLC.

STOLTHOVEN - BRAITHTWAITE

Civil Structural Mechanical Electrical Instrumental Transportation
www.infinityec.com 504-906-0548

Stolthoven

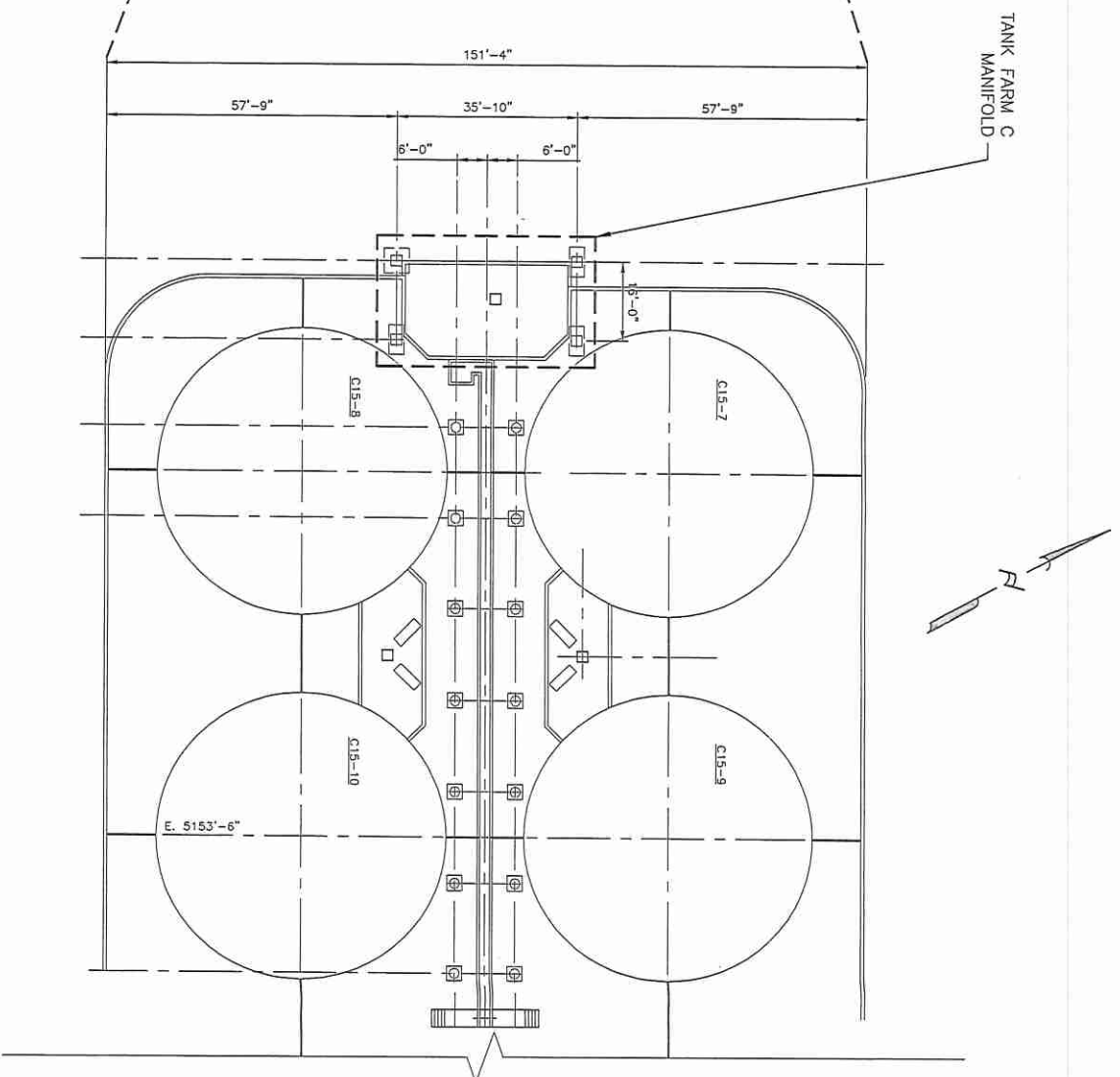
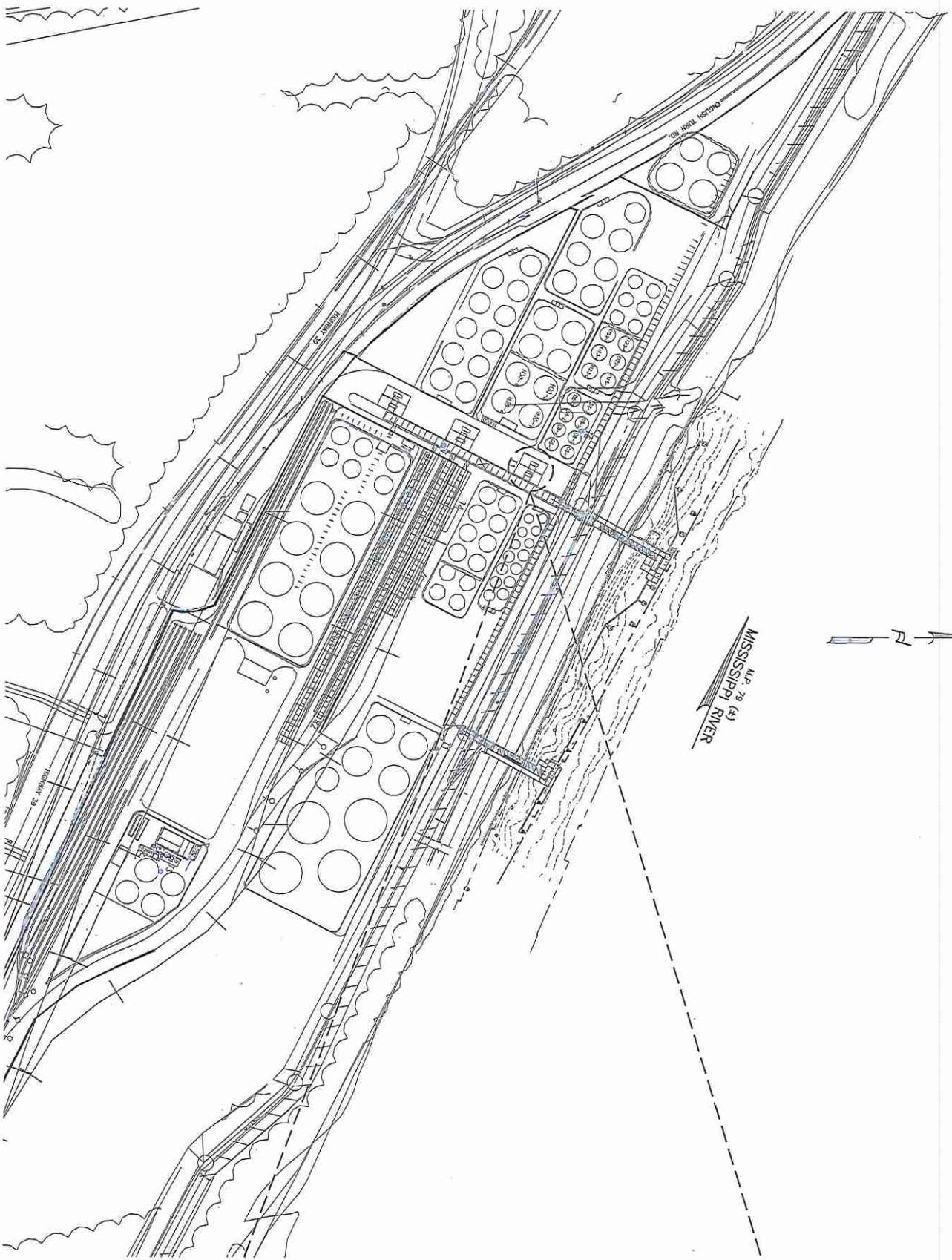
SCALE: NOTED
PROJECT NO: 22-024
RELEASE DATE: --
DESIGNED BY: B. BARRELEAUX
DRAWN BY: D. AMHSHI
CHECKED BY: C. GALLO
APPROVED BY: --

TANK FARM C MANIFOLD IMPROVEMENTS

GENERAL NOTES AND LEGEND

DRAWING NO: 22-024-G2.00

REV	DATE	DESCRIPTION
A		



REV	DATE	DESCRIPTION	BY	APP
A	08/10/22	PRELIMINARY - FOR REVIEW		

PRELIMINARY - FOR REVIEW ONLY
08/10/2022

THESE PLANS HAVE BEEN PREPARED UNDER THE SUPERVISION OF CINDY M. GALLO, P.E. (LA No. 43357) IN THE OFFICE OF INFINITY ENGINEERING CONSULTANTS, LLC.

STOLTHAVEN - BRAITHWAITE

Infinity
Engineering Consultants, LLC
Civil, Structural, Mechanical, Electrical, Instrumentation
Metairie, LA
www.infinityec.com
504.881.6548

Stolthaven

SCALE	NOTED
PROJECT NO. 22-024	
RELEASE DATE -	
DESIGNED BY B. BARBEREUX	
DRAWN BY D. JAMSHI	
CHECKED BY C. GALLO	
APPROVED BY -	

TANK FARM C MANIFOLD IMPROVEMENTS

OVERALL SITE PLAN

DRAWING NO. 22-024-G3.00

REV
A



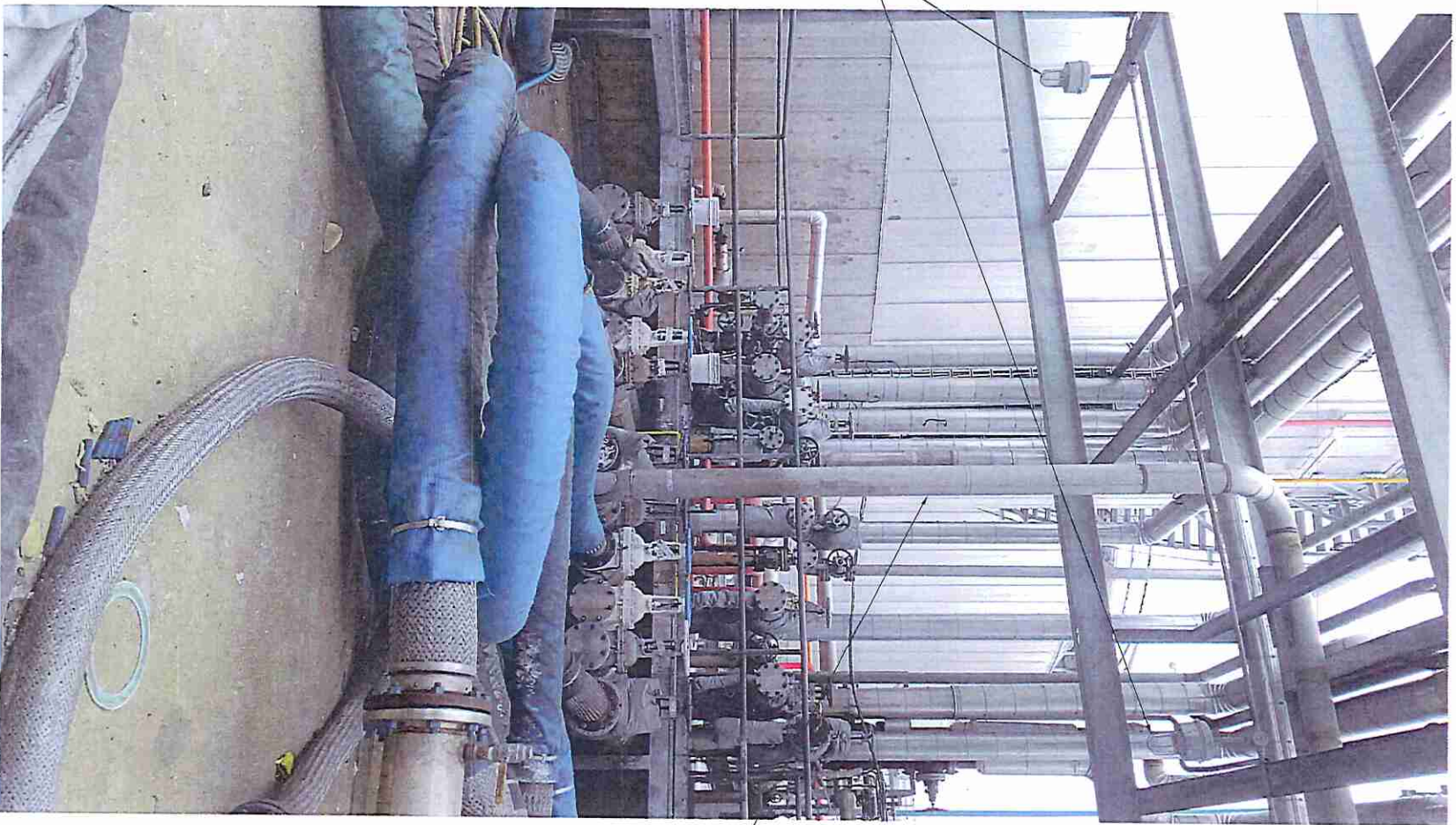
PHOTO 1 - TANK FARM C MANIFOLD AND PIPERACK

SCALE: NTS



PHOTO 2

SCALE: NTS



EXISTING LIGHTING
TO BE RELOCATED
(BY OWNER)

EXISTING LINE TO BE RELOCATED
(BY OWNER)

EXISTING LINE TO BE RELOCATED
(BY OWNER)

PHOTO 3

SCALE: NTS

REV	DATE	DESCRIPTION	BY	APP
A	08/10/22	PRELIMINARY - FOR REVIEW	TPOJANG	

**PRELIMINARY -
FOR REVIEW ONLY**
08/10/2022

THESE PLANS HAVE BEEN PREPARED UNDER THE SUPERVISION OF CINDY M. GALLO, P.E. (LA No. 43357) IN THE OFFICE OF INFINITY ENGINEERING CONSULTANTS, LLC.

STOLTHAVEN - BRAITHWAITE

Infinity
Engineering Consultants, LLC
One Bourbon Street, Suite 1000, Metairie, Louisiana 70002
www.infinityeng.com 504-884-8484

Stolthaven

SCALE	NOTED
PROJECT NO. 22-024	
RELEASE DATE -	
DESIGNED BY B. BARRELEAUX	
DRAWN BY D. BURSHI	
CHECKED BY C. GALLO	
APPROVED BY -	

TANK FARM C MANIFOLD IMPROVEMENTS

EXISTING SITE PHOTOS

DRAWING NO. 22-024-G4.00

REV
A

REV	DATE	DESCRIPTION	BY	APP
A	08/10/22	PRELIMINARY - FOR REVIEW	TP/DJG	

PRELIMINARY - FOR REVIEW ONLY
 08/10/2022

THESE PLANS HAVE BEEN PREPARED UNDER THE SUPERVISION OF CINDY M. GALLO, P.E. (LA NO 43357) IN THE OFFICE OF INFINITY ENGINEERING CONSULTANTS, LLC.

STOLLHAVEN - BRAITHWAITE



Infinity Engineering Consultants, LLC
 Civil/Structural/Mechanical/Electrical/Process Transportation
 Metairie, LA
 www.infinityec.com
 504-384-0848



Stollhaven

SCALE	NOTED
PROJECT NO. 22-024	
RELEASE DATE -	
DESIGNED BY B. BARBIEUX	
DRAWN BY D. MURSHI	
CHECKED BY C. GALLO	
APPROVED BY -	

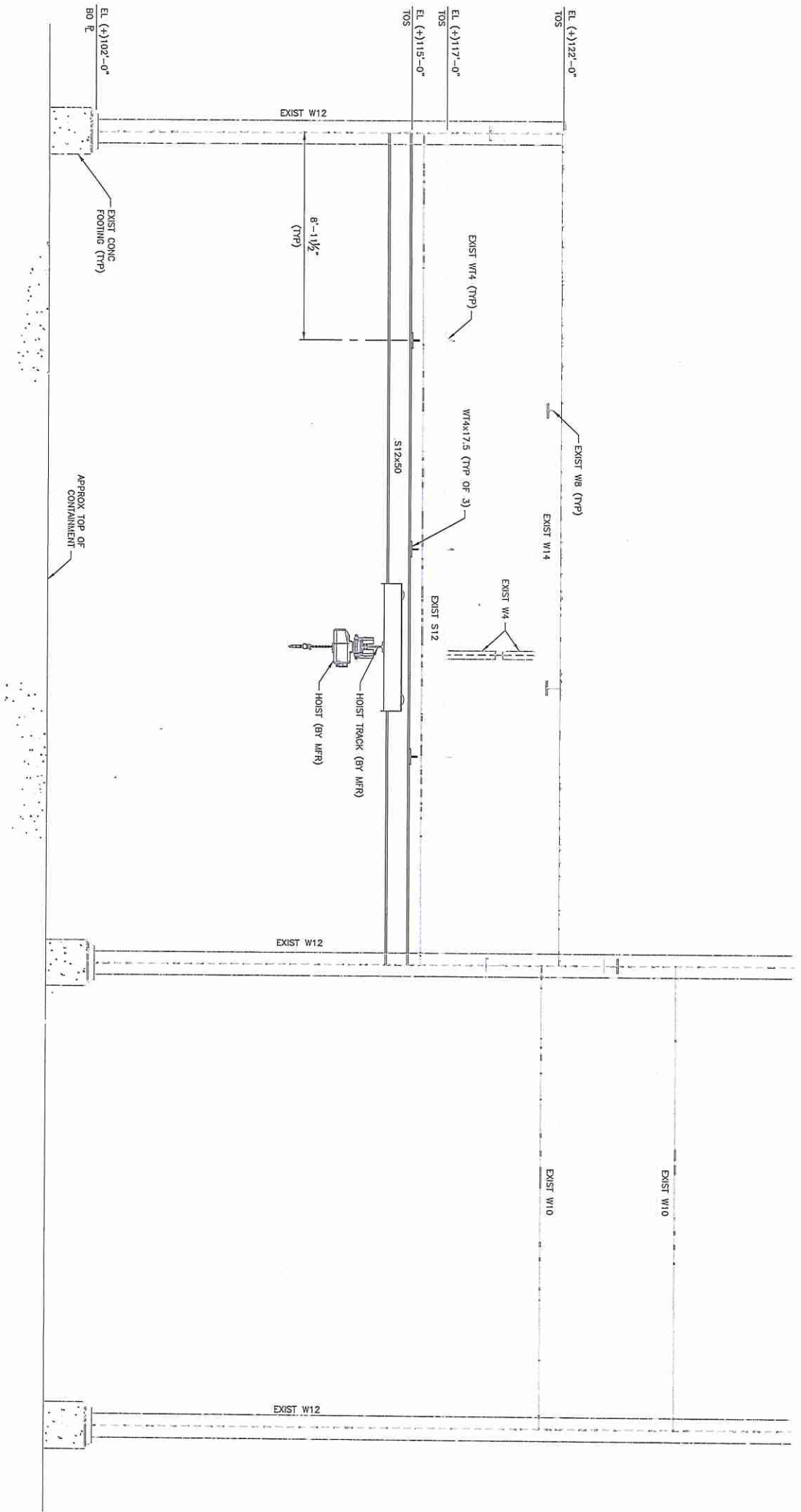
TANK FARM C MANIFOLD IMPROVEMENTS
 MANIFOLD C FRAMING ELEVATION

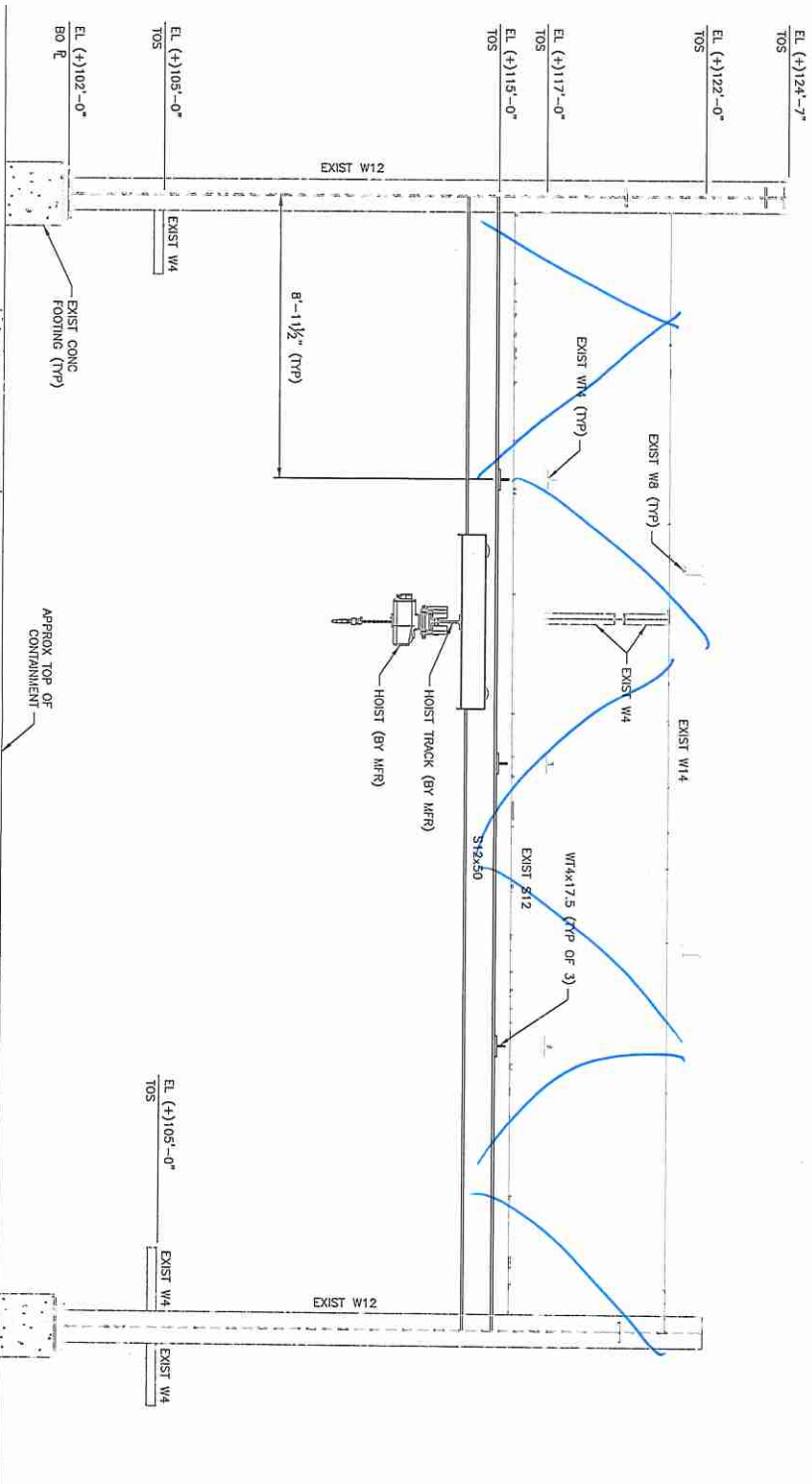
DRAWING NO. 22-024-S1.00

REV A

MANIFOLD C FRAMING ELEVATION
 A

SCALE: 3/8" = 1'-0"





MANIFOLD C FRAMING ELEVATION

SCALE: 3/8" = 1'-0"



REV	DATE	DESCRIPTION	BY	APP
A	08/10/22	PRELIMINARY - FOR REVIEW		

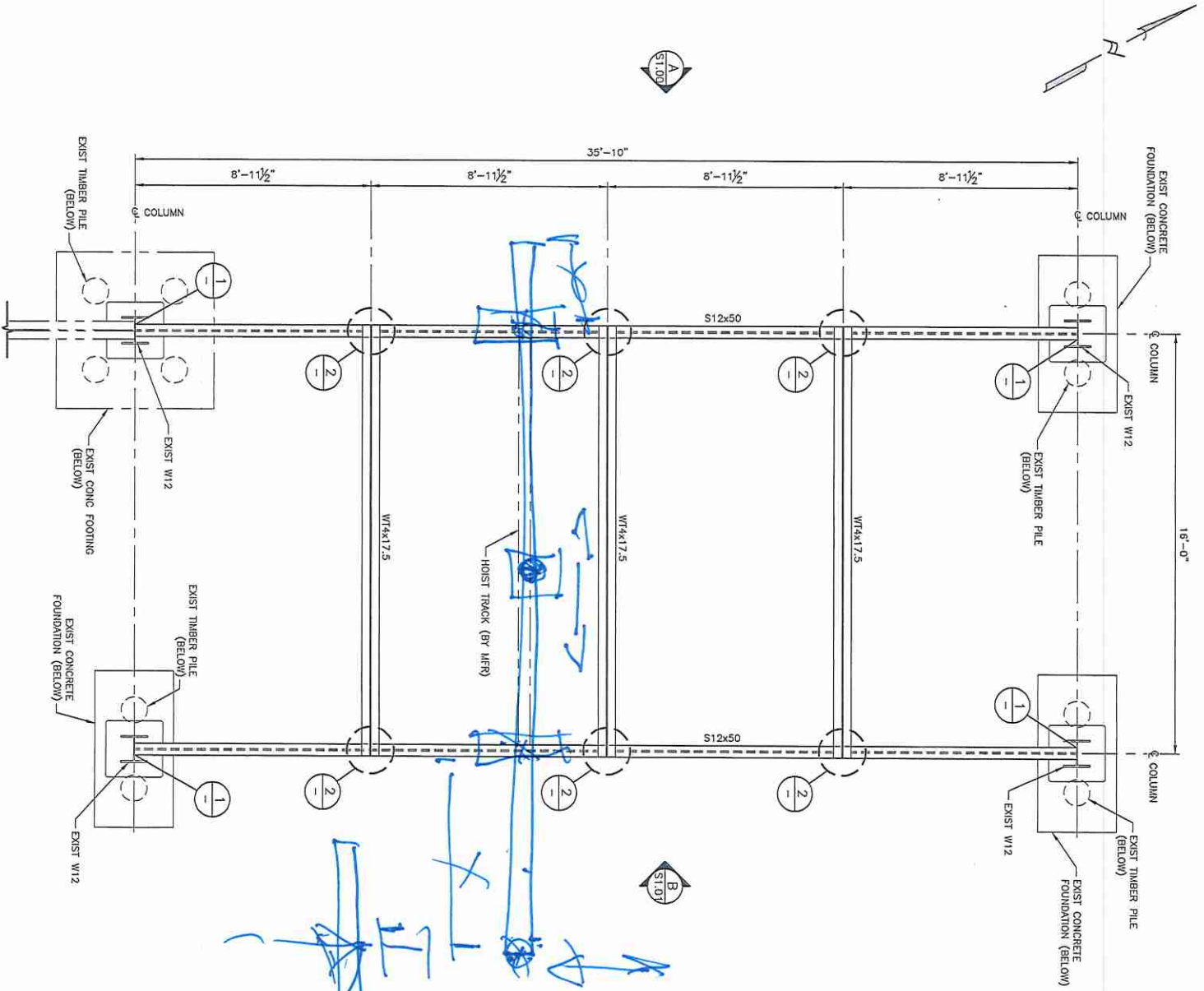
PRELIMINARY - FOR REVIEW ONLY
 08/10/2022
 THESE PLANS HAVE BEEN PREPARED UNDER THE SUPERVISION OF CINDY M. GALLO, P.E. (LA No. 43357) IN THE OFFICE OF INFINITY ENGINEERING CONSULTANTS, LLC.

STOLTHAVEN - BRAITHWAITE

SCALE	NOTED
PROJECT NO. 22-024	
RELEASE DATE -	
DESIGNED BY B. BARBILLEAUX	
DRAWN BY D. KUSHNI	
CHECKED BY C. GALLO	
APPROVED BY -	

TANK FARM C MANIFOLD IMPROVEMENTS
MANIFOLD C FRAMING ELEVATION

DRAWING NO. 22-024-S1.01



TOS EL. 115'-0"
FRAMING PLAN MODIFICATIONS
 SCALE: 3/8" = 1'-0"

**PRELIMINARY -
 FOR REVIEW ONLY**
 08/10/2022

THESE PLANS HAVE BEEN PREPARED UNDER THE SUPERVISION OF CINDY M. GALLO, P.E. (LA No. 43357) IN THE OFFICE OF INFINITY ENGINEERING CONSULTANTS, LLC.

REV.	DATE	DESCRIPTION	BY	APP.
A	08/10/22	PRELIMINARY - FOR REVIEW	TPO/CLG	

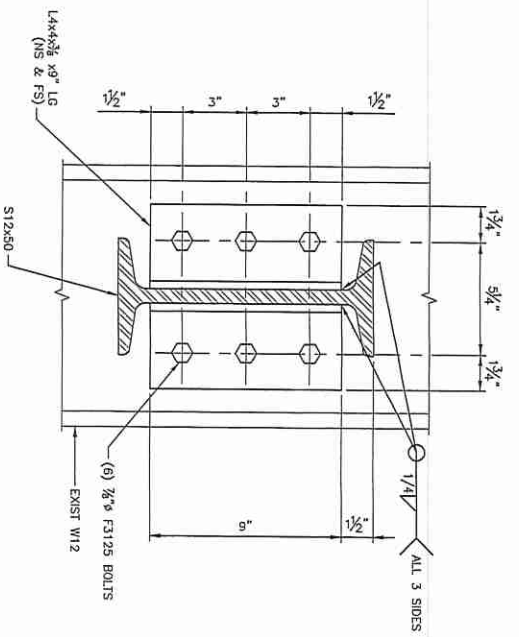
STOLTHAVEN - BRAITHWAITTE

Infinity
 Engineering Consultants, LLC
 501 Stouffville Industrial Blvd. Suite 100
 Stouffville, ON M9C 5R7
 www.infinityeng.com

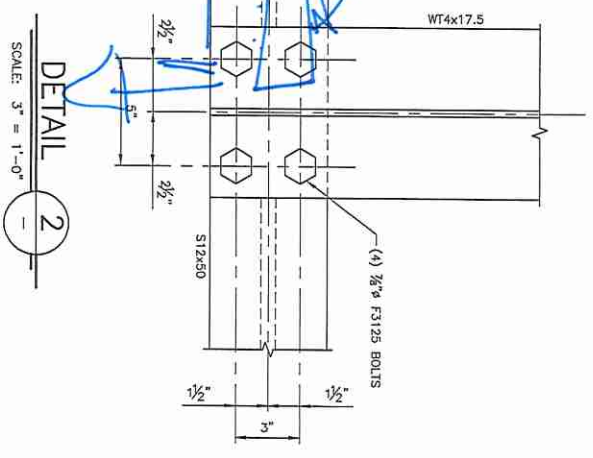
Stolthaven

SCALE	NOTED
PROJECT NO. 22-024	
RELEASE DATE -	
DESIGNED BY - R. BARBEREUX	
DRAWN BY - D. ALVINSI	
CHECKED BY - C. GALLO	
APPROVED BY -	

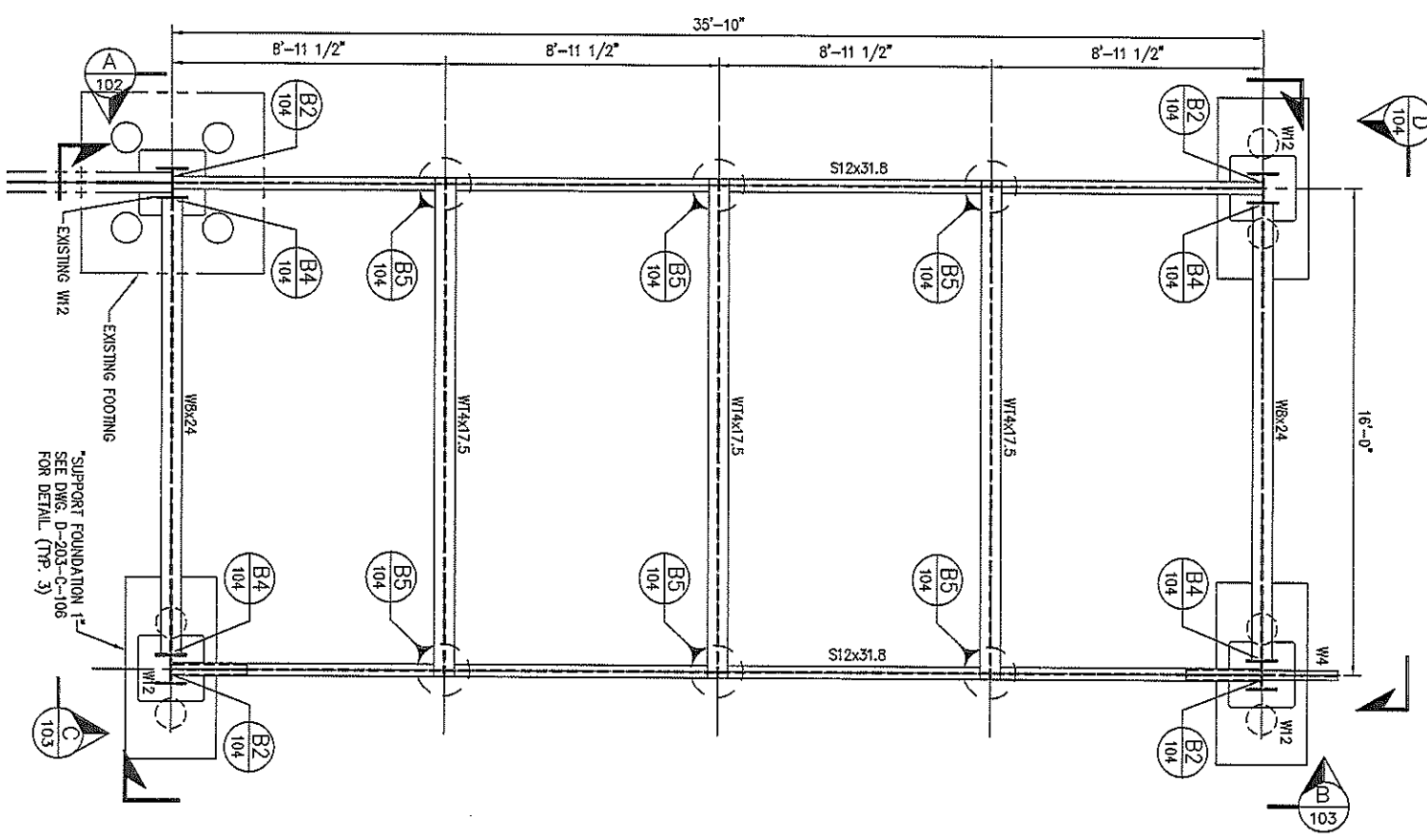
TANK FARM C MANIFOLD IMPROVEMENTS
FRAMING PLAN MODIFICATIONS AND DETAILS
 DRAWING NO. 22-024-S1.02



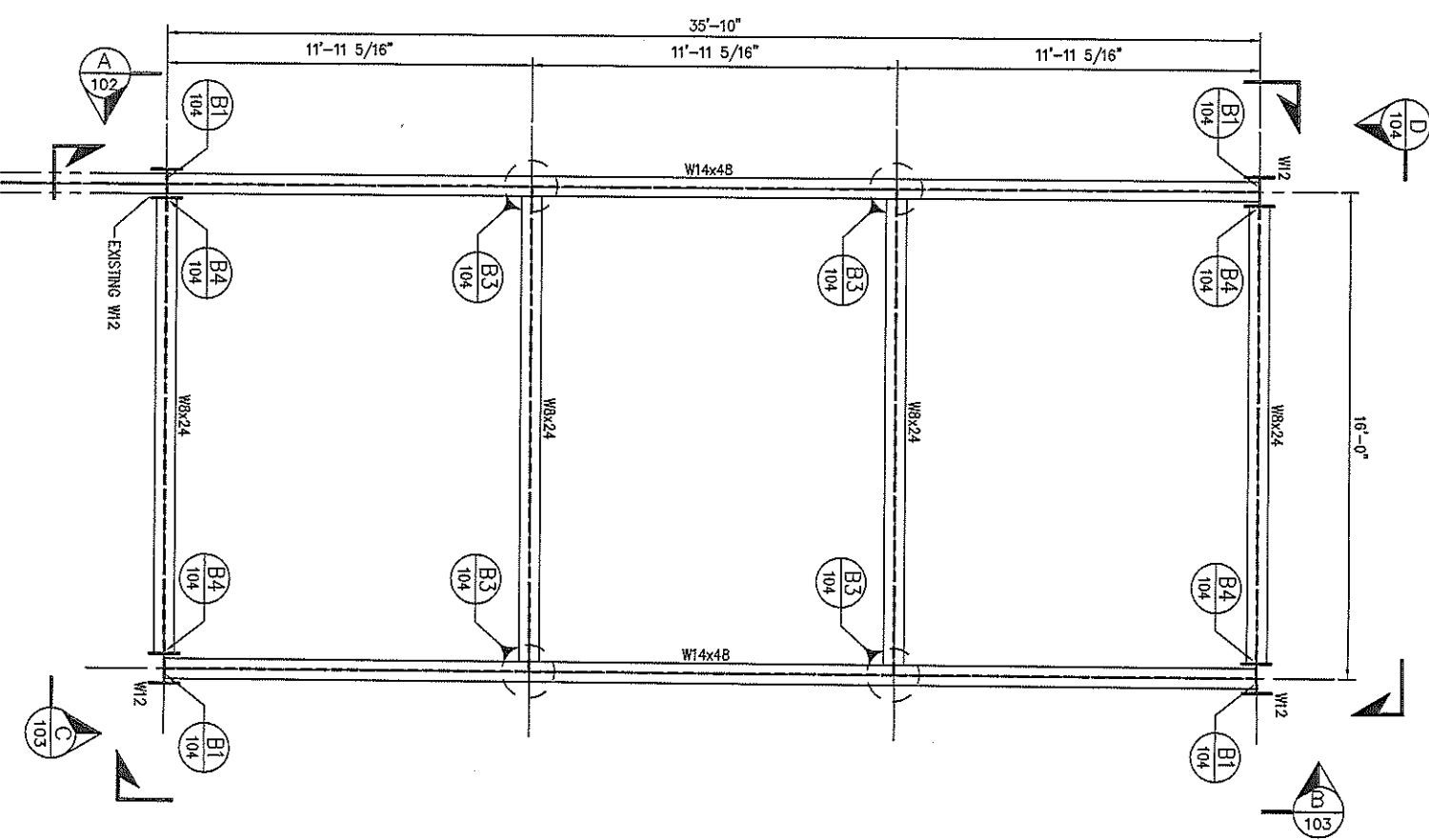
DETAIL 1
 SCALE: 3" = 1'-0"



DETAIL 2
 SCALE: 3" = 1'-0"



STRUCTURAL FRAMING PLAN EL. 100'-0" TO 118'-0"
SCALE: 3/8"=1'-0"



STRUCTURAL FRAMING PLAN EL. 118'-6" TO 125'-0"
SCALE: 3/8"=1'-0"

FOR REFERENCE ONLY

REFERENCE DRAWINGS

DATE	BY	DESCRIPTION

GENERAL NOTES

1. ALL DIMENSIONS ARE TO FACE UNLESS OTHERWISE NOTED.

2. VERIFY ALL FIELD DIMENSIONS AND SPACING OF MEMBERS.

3. VERIFY ALL CONNECTIONS AND WELDS.

4. VERIFY ALL MATERIALS AND FINISHES.

5. VERIFY ALL ELEVATIONS AND GRADES.

6. VERIFY ALL NOTES AND SPECIFICATIONS.

7. VERIFY ALL PERMITS AND APPROVALS.

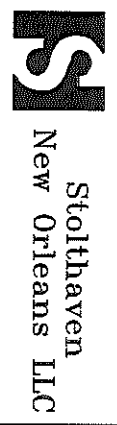
8. VERIFY ALL RECORDS AND AS-BUILT DRAWINGS.

9. VERIFY ALL CHANGES AND REVISIONS.

10. VERIFY ALL SAFETY AND PROTECTION MEASURES.

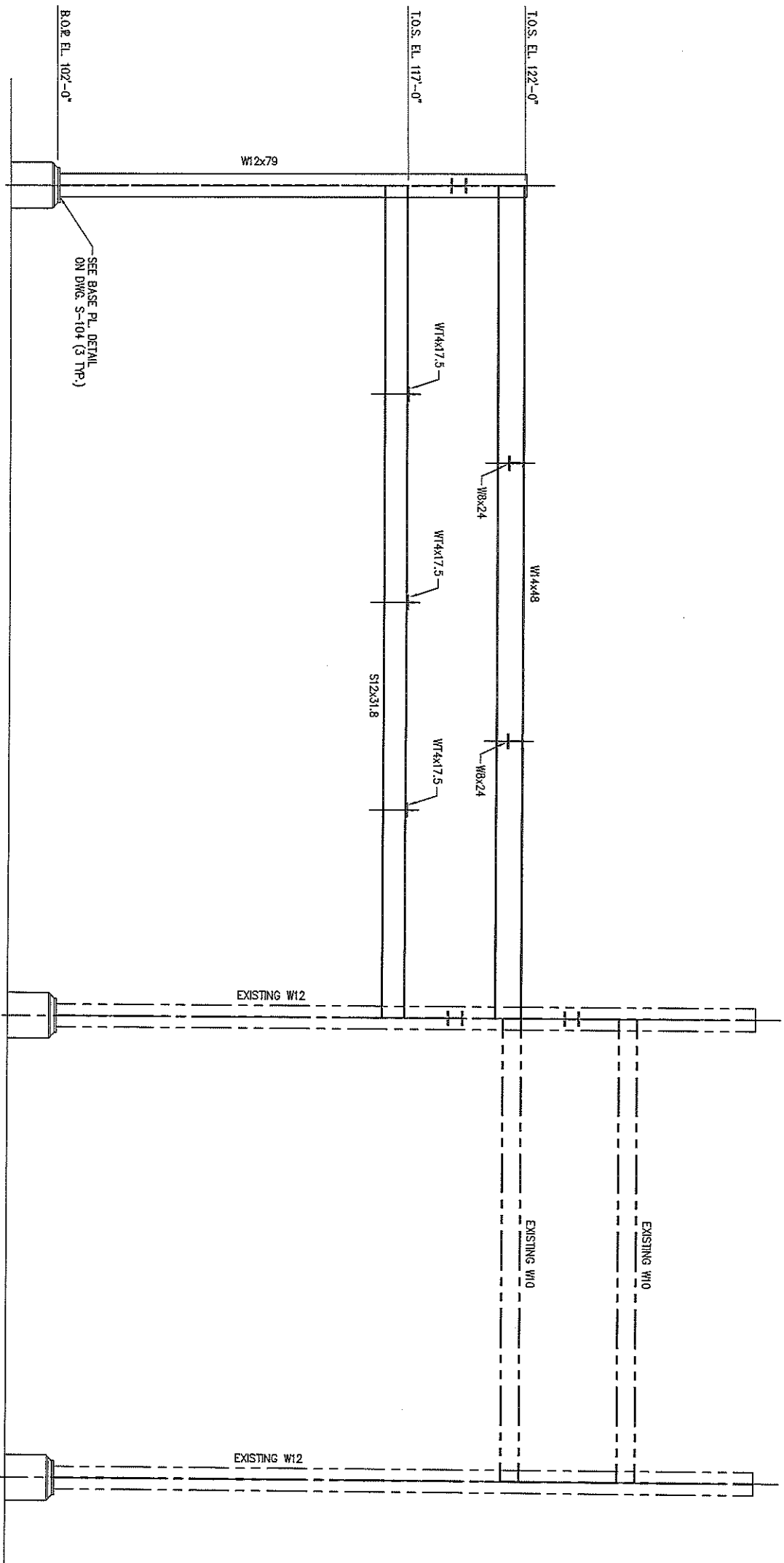
REVISIONS

NO.	DATE	BY	DESCRIPTION



THIS DRAWING IS THE PROPERTY OF STOLTHAVEN NEW ORLEANS LLC. IT IS TO BE USED ONLY FOR THE PROJECT AND SITE SPECIFICALLY IDENTIFIED HEREIN. IT IS NOT TO BE REPRODUCED, COPIED, OR TRANSMITTED IN ANY FORM OR BY ANY MEANS, WITHOUT THE WRITTEN PERMISSION OF STOLTHAVEN NEW ORLEANS LLC. ANY UNAUTHORIZED USE OR REPRODUCTION IS PROHIBITED AND SUBJECT TO LEGAL ACTION.

PROJECT	DATE	BY	CHKD BY	APP'D BY
"C" TANK BATTERY				
STRUCTURAL FRAMING				
PLAN				
DRAWN BY				
CHECKED BY				
DATE				
SCALE				
PROJECT NO.				
DATE				



ELEVATION
SCALE: 3/8"=1'-0" A
NOTE:
SEE DRAWING 104 FOR DETAILS

FOR REFERENCE ONLY

DATE	REVISION

REFERENCE DRAWINGS

GENERAL NOTES

NO.	DATE	BY	REVISIONS

NO.	DATE	BY	REVISIONS

Stolthaven
New Orleans LLC

THIS DRAWING IS THE PROPERTY OF STOLTHAVEN NEW ORLEANS LLC. IT IS TO BE USED ONLY FOR THE PROJECT AND SITE SPECIFIC TO WHICH IT WAS PREPARED. IT IS NOT TO BE REPRODUCED, COPIED, OR TRANSMITTED IN ANY FORM OR BY ANY MEANS, ELECTRONIC OR MECHANICAL, WITHOUT PRIOR WRITTEN PERMISSION FROM STOLTHAVEN NEW ORLEANS LLC. ALL RIGHTS OF INVENTION OR DESIGN ARE RESERVED.

PROJECT NO.		DATE		SCALE	
D-203-S-102					
DRAWN BY		CHECKED BY		DATE	
PROJECT NO.		DATE		SCALE	
D-203-S-102					
DRAWN BY		CHECKED BY		DATE	

1" C" TANK BATTERY
STRUCTURAL FRAMING
ELEVATION

