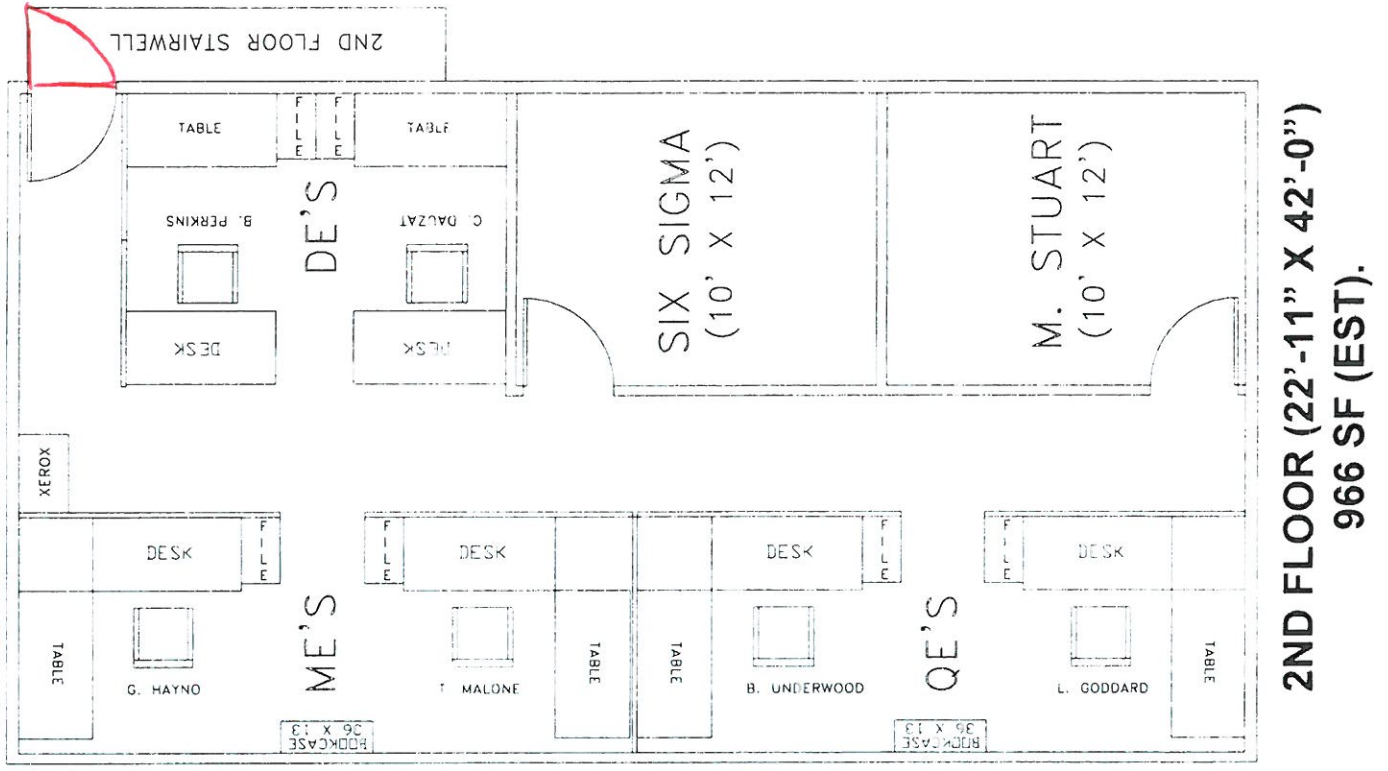
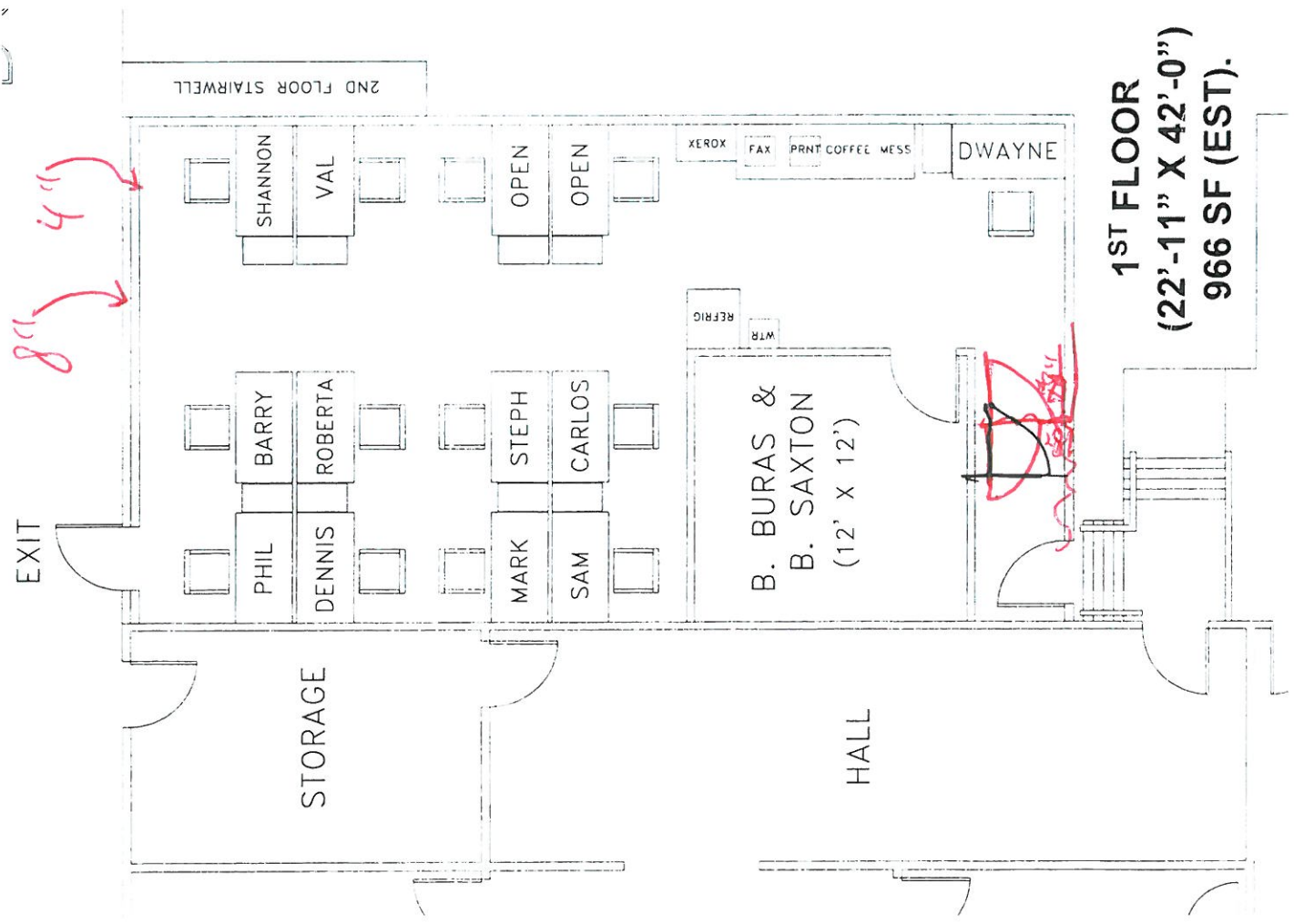
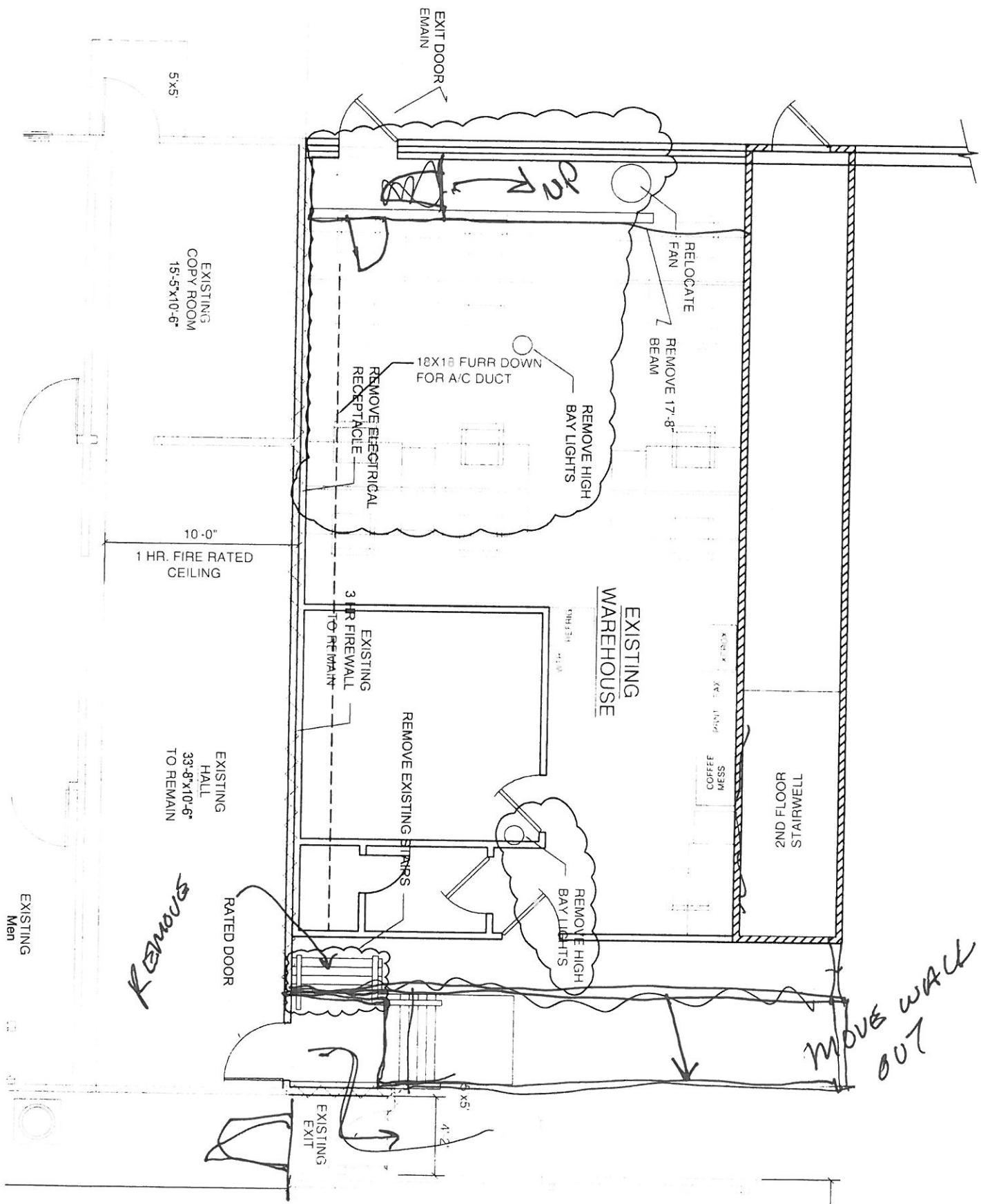


# FRONT ST. PROPOSED OFFICES





✓ REMOVE EXISTING HIGHWAY LIGHTS.

✓ 17' 8" BEAM IN THE WAY.

✓ EXISTING EXIT DOOR.

✓ NEED NEW WALL ALONG <sup>EXIST.</sup> FIREWALL.

✓ REMOVE EXISTING STAIRS

EXISTING PANEL

BP-1

FROM MDP-2#1

200 OF LINE

- 9' DROP CEILINGS
- No raised floor
- Sheetrock walls
- Move stairs
- Check w/ fire marshal re: exit door upstairs
- Hollow metal door frames
- Insulate walls
- Wood interior doors
- Metal exterior door

IDR 12  
OFFICE

WINDOW

WINDOW

PRODUCTION FLOOR

OTHER  
PROPOSED  
OFFICES

↙ FLOOR JOISTS FOR  
FUTURE CONNECTION  
OF OFFICES

