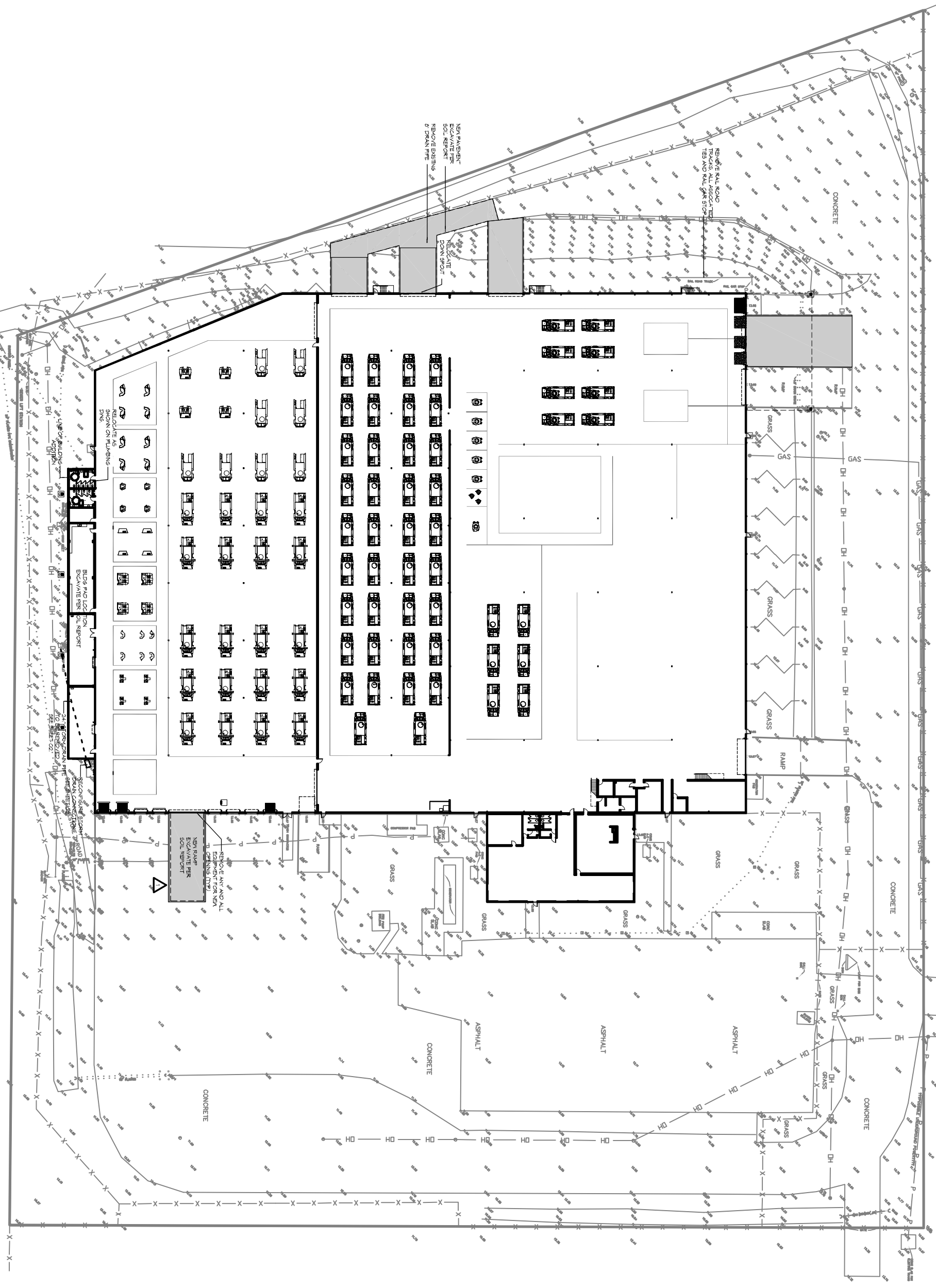


1 DEMOLITION SITE PLAN
SCALE: 1" = 30'-0"



SHEET NO. 5 OF 25
01
DRAWING NUMBER:

SHEET TITLE:
ADDITIONS AND RENOVATIONS:
TEXTRON
Marine & Land Systems
252 STONE ROAD
SLIDELL, LOUISIANA

JOB NO: 2177 DATE: 11.27.2015

DRAWN BY: CKD CHECKED BY: CKD

THE INFORMATION CONTAINED HEREIN IS THE PROPERTY OF DAMMON ENGINEERING, INC. AND IS TO BE USED ONLY FOR THE PROJECT AND SITE SPECIFICALLY IDENTIFIED HEREIN. IT IS NOT TO BE REPRODUCED, COPIED, OR TRANSMITTED IN ANY FORM OR BY ANY MEANS, ELECTRONIC OR MECHANICAL, INCLUDING PHOTOCOPYING, RECORDING, OR BY ANY INFORMATION STORAGE AND RETRIEVAL SYSTEM. WITHOUT THE WRITTEN PERMISSION OF DAMMON ENGINEERING, INC.

REVISIONS		DATE
#	DESCRIPTION	
1	APPENDIX No. 1	12-XX-13

DAMMON
ENGINEERING, INC.
Architects & Engineers

Chief Engineer: Brian Mistich, PE
Chief Architect: Kevin J. Kinchen, NCARB
154 Old Spanish Trail
Slidell, LA 70458

www.dammonengineering.com
dammoneng@bellsouth.net
PH: 985.649.5832
F: 985.641.5950