

**DAMMON**  
ENGINEERING, INC.

CHIEF ENGINEER  
EMMETT  
DAMMON, P.E.  
CHIEF ARCHITECT  
ROBERT  
WILTSE

554 OLD SPANISH TRAIL  
SUITE L, LA, 70456  
OFFICE: 985-649-5632  
FAX: 985-641-5950

WEBSITE:  
WWW.DAMMONENGINEERING.COM  
EMAIL:  
DAMMONENGB@BELL.SOUTH.NET

ARCHITECTURE  
ENGINEERING  
STUDIES  
PLANNING  
INVESTIGATION  
EXPERT WITNESS

NAVSEA SSC  
OFFICE AREA

TEXTRON MARINE  
& LAND SYSTEMS  
19401 CHEF MENTUDER HWY  
NEW ORLEANS, LA

REFLECTED  
CEILING  
PLAN

REV:

SCALE: AS NOTED

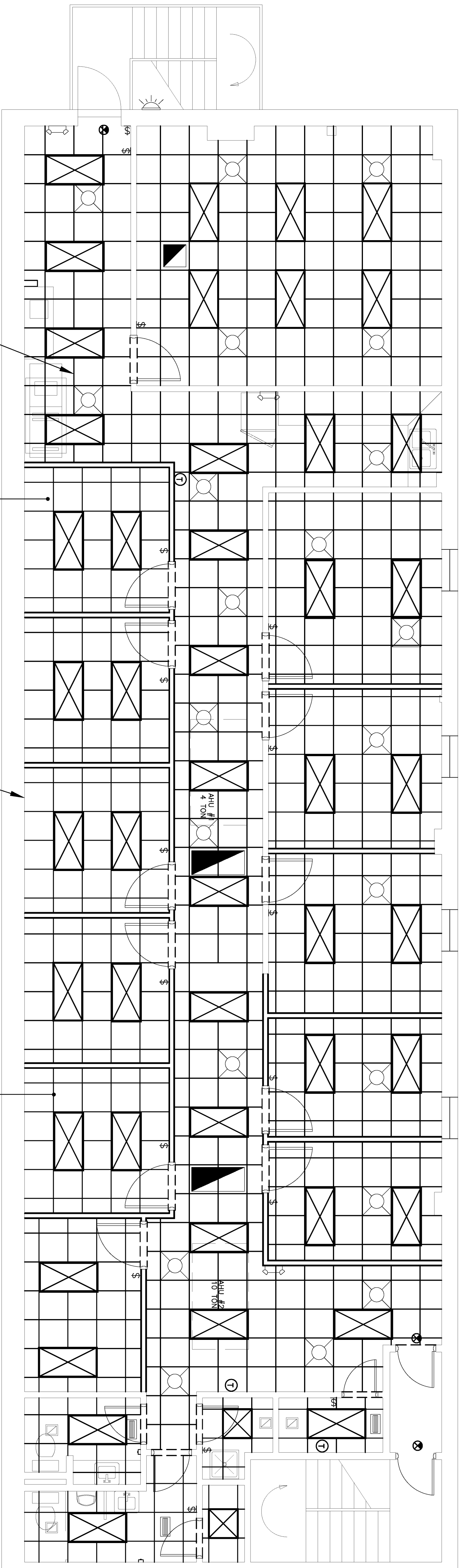
JOB#: 2120

DATE: 9/19/2011

SHEET 5

A-3

OF 8

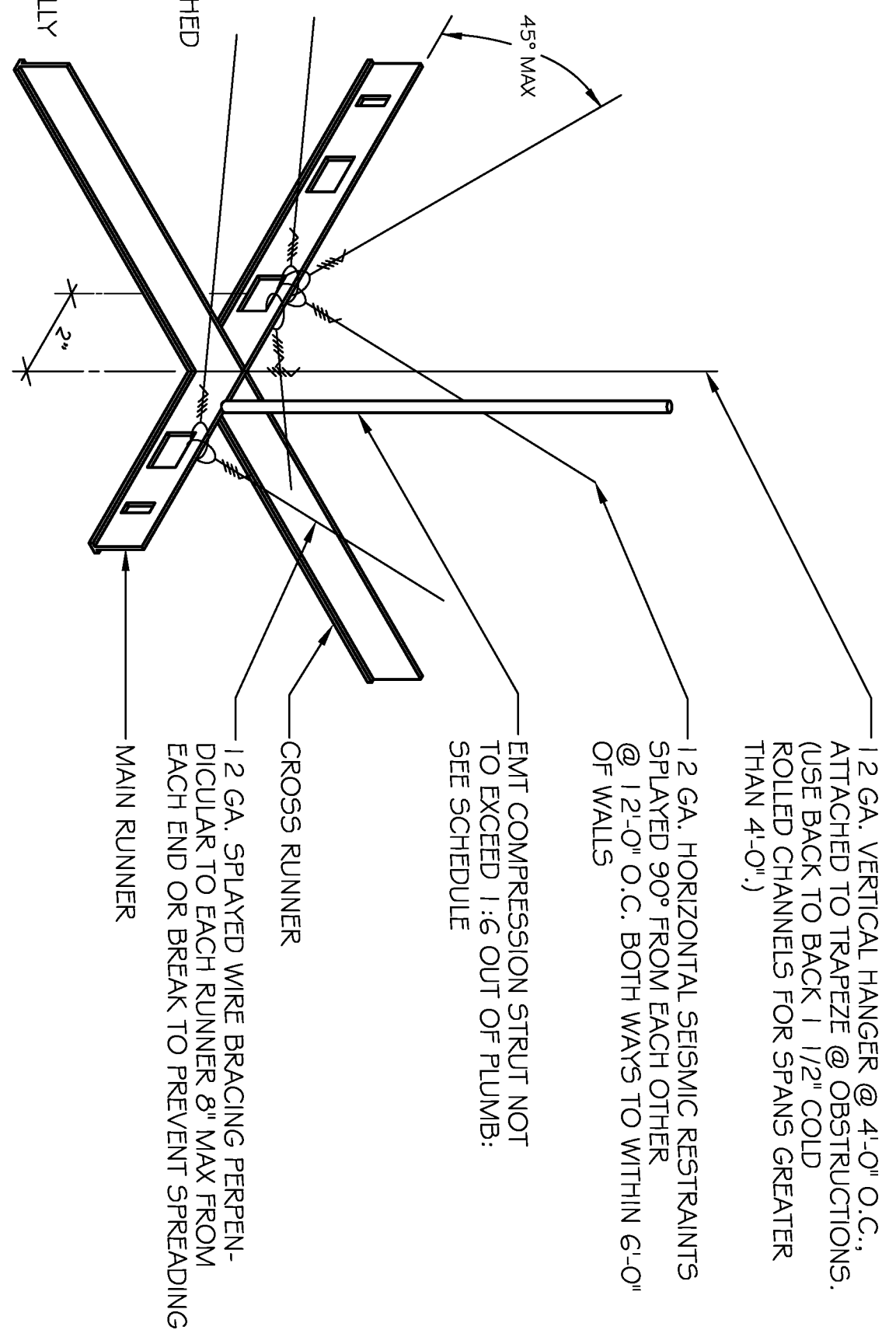


NEW ACOUSTICAL CEILING SYSTEM TO BE UFG  
OLYMPIA MICRO CLIMAPLUS, 2' x 2' x 5/8", ITEM  
NO. 4231 WITH THE DXT TBAR GRID SYSTEM  
WITH 6" HIGH-DENSITY UNFACED FIBERGLASS  
BATT INSULATION R-30, OR EQUAL.

FIRE RATED WALL. ANY PENETRATIONS  
TO THIS WALL MUST BE REPAIRED WITH  
FIRE RATED SHEETROCK AND CAULKED  
WITH FIRE RATED CAULK.

REFLECTED CEILING PLAN  
SCALE: 1/4" = 1'-0"

COMPRESSION STRUT SCHEDULE	DIAMETER
UP TO 4'-0"	3/4"Ø
5'-0"	1"Ø
6'-0"	1-1/2"Ø



- NOTES:
1. ALL HANGERS & SUPPORTS TO BE ATTACHED WITH 4 TURNS IN 1/2" (NYP.)
  2. SUPPORT EACH LIGHT FIXTURE INDEPENDENTLY OF CEILING GRID WITH 1-#12 WIRE AT TWO CORNERS DIAGONALLY ACROSS FROM ONE ANOTHER.
  3. ALL MAIN AND CROSS TEES, THEIR SPLICES AND INTERSECTING CONNECTIONS SHALL BE ADEQUATE TO RESIST 72 LBS. IN TENSION.

SUSPENDED CEILING SUPPORT

SCALE: N.T.S.

GENERAL NOTES

1. INSULATION AND INSULATION ASSEMBLIES SHALL MEET THE REQUIREMENTS OF THE INTERNATIONAL BUILDING CODE 2009, SECTION 719.
  - A. CONCEALED INSULATION SHALL HAVE A FLAME SPREAD OF 0-25 AND SMOKE DEVELOPED INDEX OF 0-450.
  - B. FACING SHALL COMPLY WITH IBC 2009.
2. ALL BATT INSULATION SHALL HAVE A CLASS 9A (0-25) FLAME SPREAD IN COMPLIANCE WITH APPLICABLE CODE.
3. PROVIDE CLEANUP ON A REGULAR BASIS. NO TRASH STORED IN BUILDING.

LEGEND

- ⊕ THERMOSTAT.
- ⊞ 8'x12" EXHAUST VENT GRILL AND BACK DRAFT DAMPER.
- ⊞ 2'x2' SUPPLY AIR DIFFUSER.
- ⊞ 8'x16" SUPPLY AIR DIFFUSER.
- ⊞ 2'x2' RETURN AIR GRILL IN CONFERENCE RM.
- ⊞ 2'x4' RETURN AIR GRILL.
- ⊞ 2'x4' FLUORESCENT LIGHTING.
- ⊞ 2'x2' FLUORESCENT LIGHTING.
- ⊞ EMERGENCY LIGHTING WITH 90 MINUTE BATTERY BACKUP.
- ⊞ WALL OR CEILING MOUNTED EMERGENCY EXIT LIGHT.
- ⊞ WALL MOUNTED LIGHT SWITCH.
- ⊞ MOTION SENSOR, LOCATED IN RESTROOM.