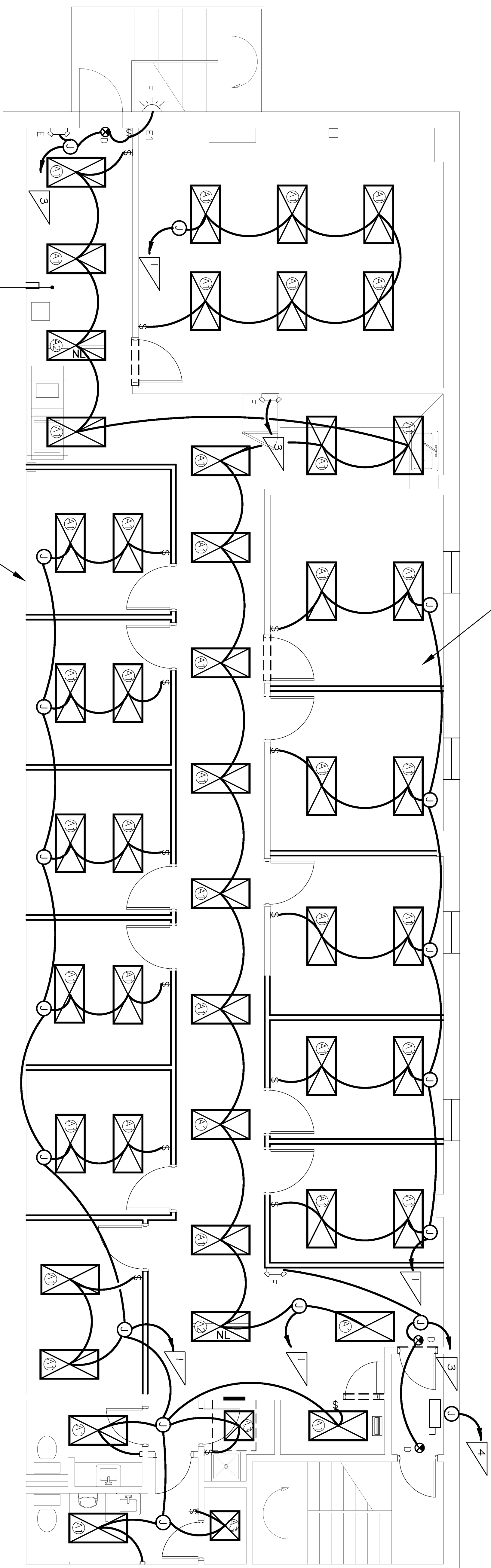
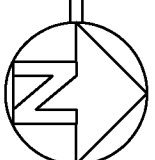


EXISTING WALLS ABOVE EXISTING CEILING GRID,
DEMO AS NEEDED.



FIRE RATED WALL. ANY PENETRATIONS TO THIS WALL
MUST BE REPAIRED WITH FIRE RATED SHEETROCK
AND CAULKED WITH FIRE RATED CAULK.

LIGHTING PLAN
SCALE: 1/4" = 1'-0"



NOTES

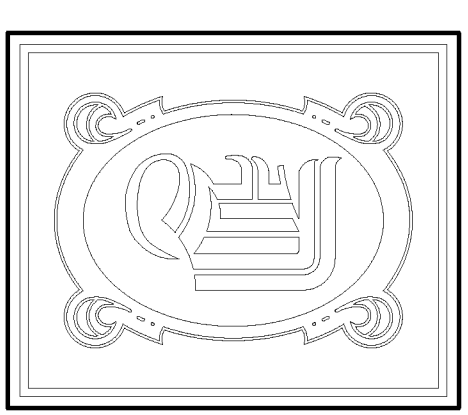
- 1 REUSE EXISTING LIGHTING CIRCUIT IF 277V, OTHERWISE RIN NEW CIRCUIT FROM PANEL LHP 480/277. REWIRE LIGHTS TO BE CONTROLLED FROM NEW SWITCHES AS SHOWN ON DRAWING.
- 2 REUSE EXISTING LIGHTING CIRCUIT IF 277V, OTHERWISE RUN NEW CIRCUIT FROM PANEL LHP 480/277. LIGHTING TO BE CONTROLLED FROM EXISTING SWITCHES NEAR ENTRANCE.
- 3 CONNECT TO HOUSE PANEL IN JANITORIAL CLOSET 120V, 20A, 1P
- 4 PROVIDE A MEANS OF DISCONNECT FOR POWER EXHAUST FAN, CONNECT TO HOUSE PANEL IN JANITORIAL CLOSET 120V, 20A, 1P. POWER EXHAUST FAN FOR COMPUTER ROOM, JANITORIAL CLOSET AND RESTROOMS.

LIGHT FIXTURE SCHEDULE

MARK	DESCRIPTION	LAMP	MODEL NO.	MANUF.
A1	2x4 LAY-IN FLUORESCENT W/ELECTRONIC BALLAST	(3) T32-18 3500K	25PF-6-3-33-FW- A12 123-277-GE8	LITHONIA
A2 NIGHT	2x4 LAY-IN FLUORESCENT W/ELECTRONIC BALLAST	(3) T32-18 3500K	25PF-6-3-32-FW- A12 123-277-GE8	LITHONIA
A3	2x2 LAY-IN FLUORESCENT WITH ELECTRONIC BALLAST	(2) T32-18 3500K	25PF-6-2-32-FW- A12 123-277-GE8	LITHONIA
D	EMERGENCY EXIT LIGHT W/BATTERY BACK-UP	LED	TLE	LITHONIA
E	EMERGENCY DUAL LAMP W/BATTERY BACK-UP, INSTAL 84" A.F.F.	HIT 5-4W	ELM2	LITHONIA
E1	EMERGENCY BATTERY BACKUP, REMOTE CAPABILITY FOR 24W/90 MIN. MOUNT ABOVE INTERIOR SIDE OF DOOR.	N/A	GELM2PRO	LITHONIA
F	EMERGENCY EGRESS OUTDOOR REMOTE HEAD, MOUNT ABOVE DOOR.	2-8W HIT	ELAWNKH0806	LITHONIA

LEGEND

- 2x4 FLUORESCENT LIGHTING, SUPPORT EACH LIGHT FIXTURE INDEPENDENTLY FROM CEILING GRID.
- 2x4 FLUORESCENT LIGHTING, SUPPORT EACH LIGHT FIXTURE INDEPENDENTLY FROM CEILING GRID.
- 2x2 FLUORESCENT LIGHTING, SUPPORT EACH LIGHT FIXTURE INDEPENDENTLY FROM CEILING GRID.
- EXTERIOR LIGHT FIXTURE WITH 90 MIN. BACKUP.
- EMERGENCY LIGHTING WITH 90 MINUTE BATTERY BACKUP.
- WALL OR CEILING MOUNTED EMERGENCY EXIT LIGHT.
- 277V WALL MOUNTED LIGHT SWITCH.
- JUNCTION BOX
- DISCONNECT SWITCH.
- MOTION SENSOR, LOCATED IN RESTROOM.



DAMMON ENGINEERING, INC.

CHIEF ENGINEER
EMMETT
DAMMON, P.E.
CHIEF ARCHITECT
ROBERT
WILTSE

554 OLD SPANISH TRAIL
SUITE L, LA, 70456
OFFICE: 985-649-5632
FAX: 985-641-5950

WEBSITE:
WWW.DAMMONENGINEERING.COM
EMAIL:
DAMMONENGB@BELL.SOUTH.NET

ARCHITECTURE
ENGINEERING
STUDIES
PLANNING
INVESTIGATION
EXPERT WITNESS

NAVSEA SSC
OFFICE AREA

TEXTRON MARINE
& LAND SYSTEMS
19401 CHEF MENTUDER HWY
NEW ORLEANS, LA

ELECTRICAL
LIGHTING
PLAN

REV:

SCALE: AS NOTED

JOB#: 2120

DATE: 9/19/2011

SHEET 8

E-2

OF 8