

DAMMON ENGINEERING, INC.
 CHIEF ENGINEER
 ENNETT DAMMON, P.E.
 CHIEF ARCHITECT
 ROBERT WILTSE

554 OLD SPANISH TRAIL
 SUITE L, LA. 70456
 OFFICE: 985-649-5632
 FAX: 985-641-5950

WEBSITE:
 WWW.DAMMONENGINEERING.COM
 EMAIL:
 DAMMONENG@BELL.SOUTH.NET

ARCHITECTURE
 ENGINEERING
 STUDIES
 PLANNING
 INVESTIGATION
 EXPERT WITNESSES

NAVSEA SSC
 OFFICE AREA

TEXTRON MARINE
 & LAND SYSTEMS
 19401 CHEF MENTIER HWY
 NEW ORLEANS, LA

MECHANICAL
 PLAN

REV:

SCALE: AS NOTED

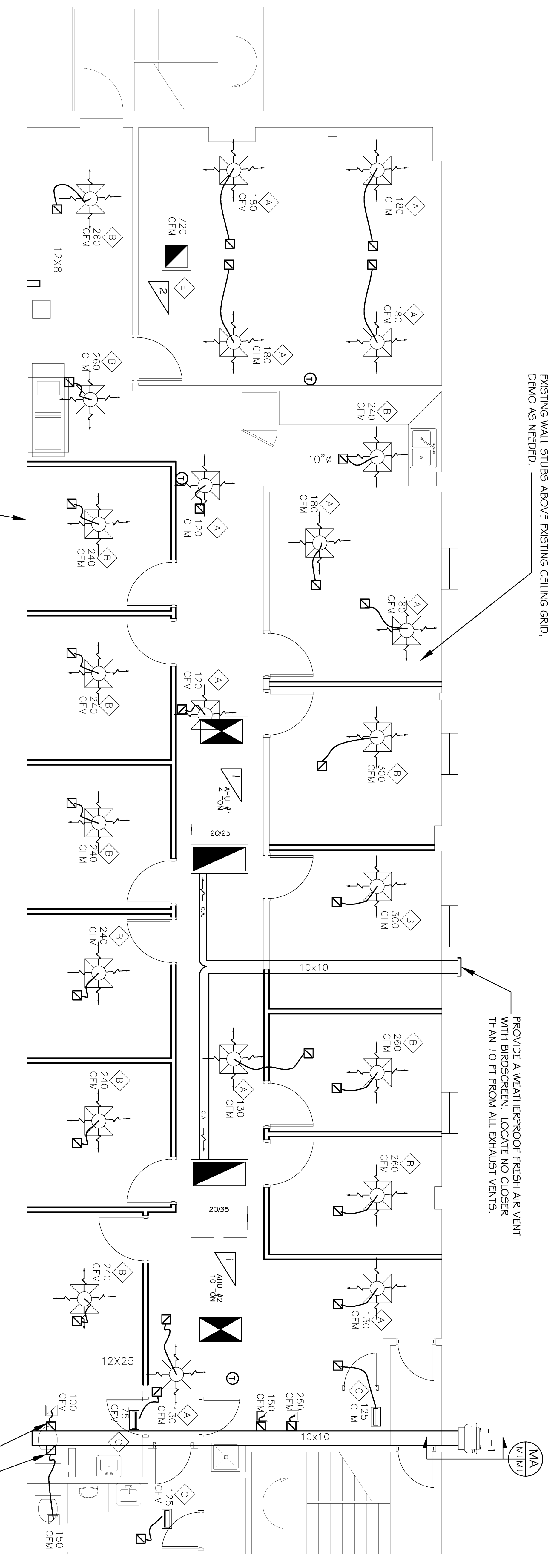
JOB#: 2120

DATE: 9/19/2011

SHEET: 6

M-1

OF 8

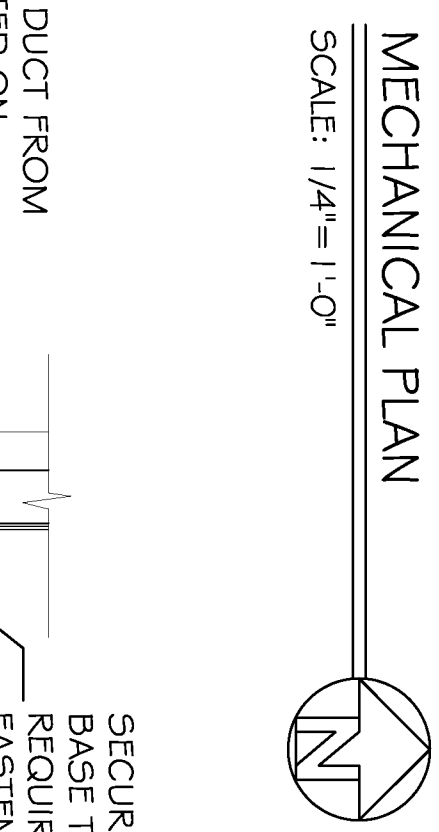


EXISTING WALL STUBS ABOVE EXISTING CEILING GRID.
 DEMO AS NEEDED.

PROVIDE A WEATHERPROOF FRESH AIR VENT WITH BIRDSCREEN. LOCATE NO CLOSER THAN 10 FT FROM ALL EXHAUST VENTS.

PROVIDE BACKDRAFT DAMPERS AND VOLUME CONTROL DAMPER FOR EACH DROP.

FIRE RATED WALL. ANY PENETRATIONS TO THIS WALL MUST BE REPAIRED WITH FIRE RATED SHEETROCK AND CAULKED WITH FIRE RATED CAULK.



SECURE EXHAUST FAN HINGED BASE TO EXTERIOR WALL AS REQUIRED. (MINIMUM 2 FASTENERS PER SIDE.)

- NOTES**
- 1 REMOVE AND REPLACE EXISTING 4 TON AND 10 TON AIR HANDLING UNIT AND DUCT HEATERS WITH NEW UNITS.
 - 2 CONNECT RETURN GRILL TO 4 TON RETURN SYSTEM.
 - 3 CONNECT TO EXISTING TRUNK LINE.

LEGEND

- ⊕ THERMOSTAT.
- ⊖ 8x1/2" EXHAUST VENT GRILL AND BACK DRAFT DAMPER.
- ⊖ ROUND SPRINKLER TAP WITH SCOOP AND DAMPER. FIELD LOCATE.
- ⊖ 2x2 SUPPLY AIR DIFFUSER.
- ⊖ 8x1/2" SUPPLY AIR DIFFUSER.
- ⊖ 2x2 RETURN AIR GRILL.
- ⊖ 2x4 RETURN AIR GRILL.
- ⊖ SUPPLY AIR.

MECHANICAL NOTES

1. CONTRACTOR SHALL CLEAN THE INTERNAL TRUNK LINES OF EXISTING DUCTWORK WITH A NON-METALLIC BRUSH. ENSURE EXISTING DUCTWORK IS CLEAN, MOLD AND DUST FREE.
2. CONTRACTORS AND SUB-CONTRACTORS SHALL CAREFULLY REVIEW THE CONSTRUCTION DOCUMENTS, INFORMATION REGARDING THE COMPLETE WORK IS DISPERSED THROUGHOUT THE DOCUMENT SET AND CANNOT BE ACCURATELY DETERMINED WITHOUT REFERENCE TO THE COMPLETE DOCUMENT SET.
3. USE OF COMBUSTIBLE MATERIALS IS NOT ALLOWED IN THE RETURN AIR PLENUM. MATERIALS USED IN THE PLENUM SHALL HAVE FLAME SPREAD RATING NOT TO EXCEED 25, AND SMOKE DEVELOPED RATING NOT TO 50 WHEN TESTED IN ACCORDANCE WITH ASTM E 84.
4. EXPOSED DUCTWORK TO BE GALVANIZED SHEET METAL PER SMACNA STANDARDS. LINE WITH NEOPRENE COATED 1" O.D. 1.5 POUNDS PER CUBIC FOOT DUCT INSULATION.
5. ROUND FLEXIBLE DUCT TO BE UL-181, CLASS I, AIR DUCT MATERIALS.
6. DUCT SIZES SHOWN ARE CLEAR INSIDE DIMENSIONS.
7. IN ALL AIR DISTRIBUTION SYSTEM OVER 2,000 CFM, SMOKE DETECTORS SHALL BE INSTALLED IN ACCORDANCE WITH NFPA 72 & 90A IN THE DUCT SYSTEM DOWNSTREAM OF THE AIR FILTERS AND AHEAD OF ANY BRANCH CONNECTIONS IN THE AIR SUPPLY SYSTEM. THE SMOKE DETECTOR SHALL BE CONNECTED TO ANY REQUIRED ALARM SYSTEM OR IN THE ABSENCE OF AN ALARM SYSTEM IT SHALL CAUSE A VISUAL AND AUDIBLE SIGNAL IN A NORMALLY OCCUPIED AREA.
8. PROVIDE U.L. LISTED 125 F FRESHSHOT IN RETURN AIR OF EACH SYSTEM UNDER 2,000 CFM TO SHUT DOWN FAN IN THE EVENT OF FIRE.
9. PROVIDE U.L. RATED FIRE DAMPERS WHERE REQUIRED AT ALL DUCT PENETRATIONS OF FIRE-RATED ASSEMBLIES AND WHERE REQUIRED BY CODE, INCLUDING OUTSIDE AIR INTAKES.
10. ALL AIR HANDLING SYSTEMS TO BE BALANCED TO ASSURE PROPER AIR FLOWS PER PLANS.
11. PROVIDE AND INSTALL WATER PROOF GULCH VENT ON SIDE OF BUILDING FOR COMPUTER ROOM AND JANITOR CLOSET EXHAUST.
12. ALL ELECTRICAL, MECHANICAL AND PLUMBING PENETRATING THE PARTITIONS SHALL BE FIRE CAULKED. (PENETRATIONS THROUGH RATED CONSTRUCTION SHALL BE SEALED WITH A MATERIAL CAPABLE OF PREVENTING THE PASSAGE OF FLAMES AND HOT GASES WHEN TESTED IN ACCORDANCE WITH ASTM-E814.)

EXHAUST FAN SCHEDULE

MARK	MANUFACTURER AND MODEL NO.	MOUNTING LOCATION	FAN TYPE	CFM	EXT. STATIC	MOTOR DATA			REMARKS	
						HP	VOLT	PH		
EF-1	AOGE FRN-110	EXTERIOR WALL	EXTERIOR	650	0.5	1/10	115	1	1550	CONNECT TO HALLWAY LIGHTING SWITCH.

DIFFUSER, REGISTER GRILLE SCHEDULE

MARK	MANUFACTURER AND MODEL NO.	MAX. N.C.	FINISH	WHITE	PRIME	SPEC.	OBD	NONE	LAY-IN	FRAME SURF.	REMARK
A	TTUS TMS 2x2 2" Ø SUPPLY	30	X	X	X	X	X	X	X	X	
B	TTUS TMS 2x2 1" Ø SUPPLY	30	X	X	X	X	X	X	X	X	
C	TTUS TMS 8x16 PNL	30	X	X	X	X	X	X	X	X	
D	TTUS 50F EGGRATE 2x4	30	X	X	X	X	X	X	X	X	
E	TTUS 50F EGGRATE 2x2	30	X	X	X	X	X	X	X	X	

AIR BALANCE SCHEDULE

OUTSIDE AIR FLOW (CFM)	RAU1	RAU2	BT-1
RETURN AIR FLOW (CFM)	1750	350	0
EXHAUST AIR FLOW (CFM)	1450	3650	0
SUPPLY AIR FLOW (CFM)	1600	4000	0
EXHAUST AIR FLOW (CFM)	0	0	650
BUILDING PRESSURE (CFM)	+150	+350	-650
QUANTITIES	1	1	1
TOTAL PRESSURIZATIONS	+150	+350	-650
REMARKS			
RESULTING BUILDING PRESSURIZATION (CFM)			-150