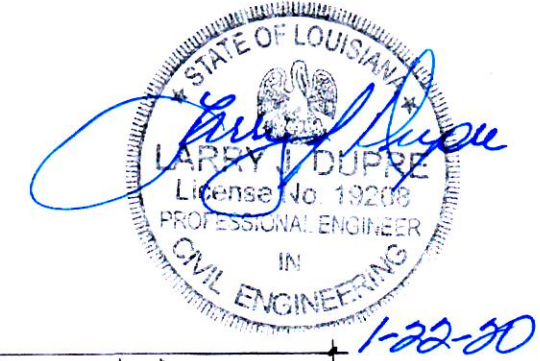
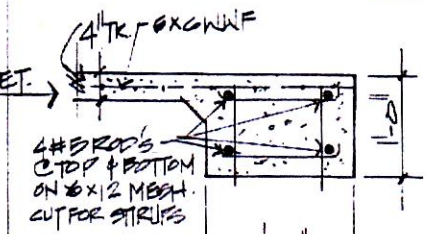
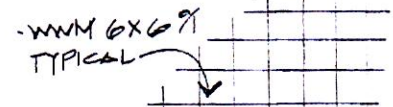
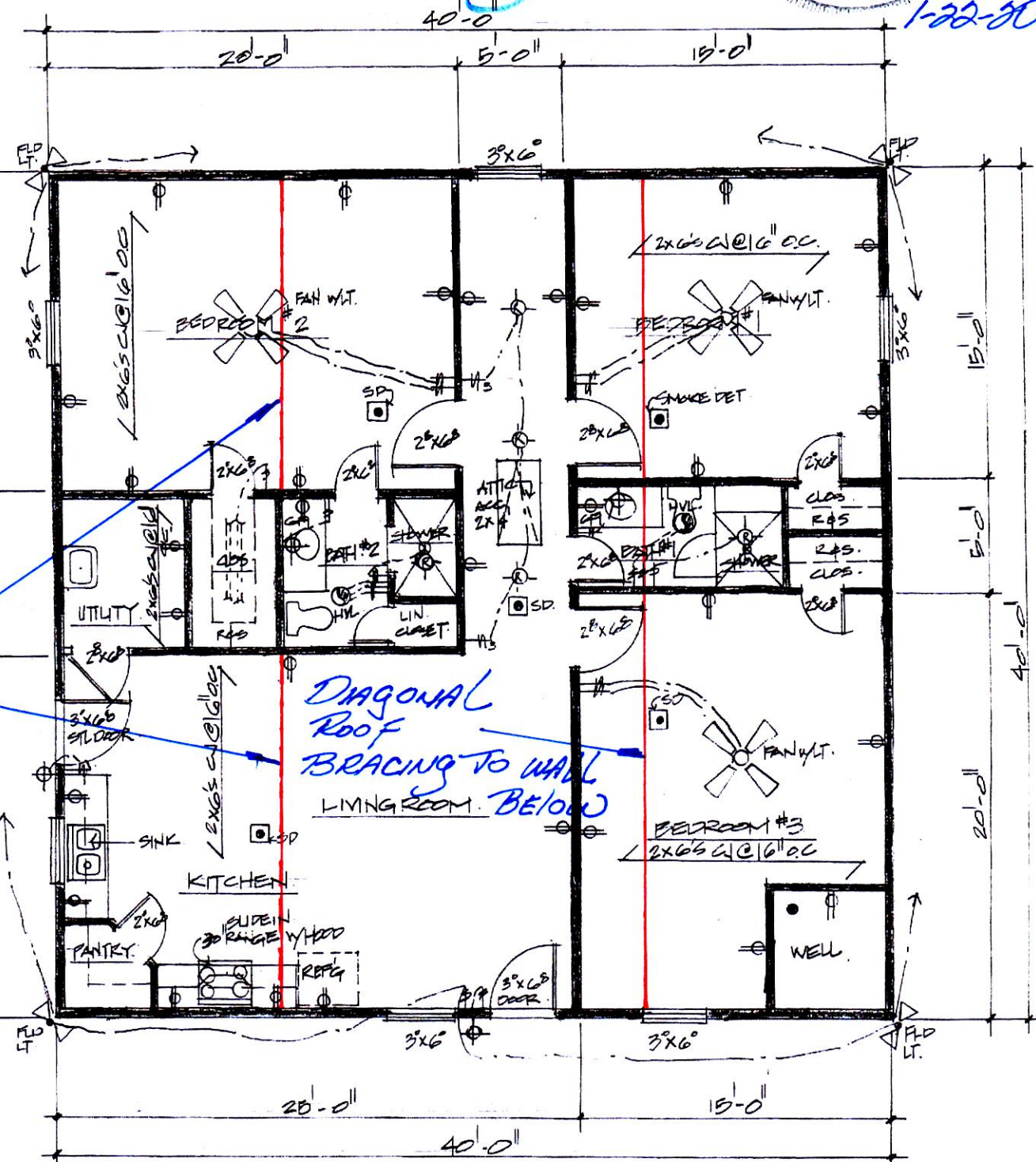


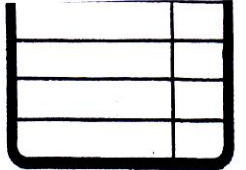
Roof BRACING



SYMBOL	DESCRIPTION
⊕	DUPLEX OUTLET (GROUNDING TYPE)
⊕	WEATHER PROOF DUPLEX OUTLET ABOVE COUNTER LOCATION
⊕	FLUSH FLOOR DUPLEX OUTLET, OTHER VERT. LOCATION
⊕	220 VOLT OUTLET OR CONNECTION
⊕	CEILING MOUNTED LIGHT FIXTURE
⊕	WALL BRACKET MOUNTED LIGHT FIXTURE
⊕	SUSPENDED CEILING MOUNTED LIGHT FIXTURE
⊕	RECESSED DIRECTIONAL CEILING LIGHT FIXTURE
⊕	RECESSED CEILING LIGHT FIXTURE
⊕	RECESSED LIGHT FOR LIST AREA
⊕	UNDER CABINET FLUORESCENT LIGHT
⊕	EXTERIOR CAST ALUMINUM FLOOD LIGHTS
⊕	CEILING MOUNTED PADDLE FAN W/ LIGHT
⊕	CEILING MOUNTED FAN - EXHAUST
⊕	CEILING MOUNTED FAN AND HEATER
⊕	CEILING MOUNTED FAN, LIGHT, AND HEATER
⊕	SMOKE DETECTOR - 110V. UL APP.
⊕	SMOKE DETECTOR - MOKIDE DETECTOR



36'-0"
40'-0"



PROPOSED: GUEST HOUSE BUILDING
FOR: MR. ANTONIO MENDOZA
LOT: 20 RAMSEY ESTATES SUBDIVISION PHASE II, STAMMANT.

NR4	DRAWN
	CHECKED
	DATE
	JAN 13 2020
	SCALE
	AS SHOWN
	JOB NO.
	1-T-2020