



MECHANICAL FLOOR PLAN
STORE NUMBER 2274
FREMAUX TOWN CENTER
SLIDELL, LOUISIANA



DATE:	APRIL 15, 2013
ISSUE:	ISSUE FOR PERMIT
NO.:	CONSTRUCTION CHANGE DIRECTIVE #1
	09/06/13

ROBERT M. LUCIUS, ARCHITECT
 Consultants
 1200 Marshall St.
 NE
 Minneapolis, MN 55414
 612.677.7100
 612.677.7499
 www.rmla.com



Dunham Associates, Inc.
 96 South Main Street, Suite 100
 Minneapolis, Minnesota 55402-1640
 Phone: 612.465.7500 Fax: 612.465.7501
 www.dunham.com
 mechanical • electrical consulting engineering

Job No:
0413995-081

Scale: 1/8"=1'-0"
 Drawn: _____
 Checked: _____

Sheet No:
M1.0

MARK	UNIT #	MODEL #	FAN DATA				COOLING DATA				GAS DATA		ELECTRICAL DATA			EER/IEER/SEER	HUMIDITROL	MAX UNIT WEIGHT W/ CURB	AREA SERVED		
			NOMINAL TONS	CFM	MIN. O.A.	E.S.P.	H.P.	DRIVE PACKAGE	TOTAL COOLING (MBH)	SENSIBLE COOLING (MBH)	ENTERING DBWB	AMBIENT	GAS INPUT (MBH)	GAS OUTPUT (MBH)	VOLTAGE					MCA	MOCP
RTU	1	LGH072H4BM1G	6	2250	200	1.1	2.0	2	70.07	70.07	75.8/65.0	95	105.0	84.0	480	17	25	12.0/12.5/—	No	1,008	OFFICE/VESTIBULE
RTU	2	LGH036H4ES1G	3	1200	215	1.0	0.5	ECM	34.94	22.22	78.8/67.7	95	65.0	52.0	480	10	15	12.5/—/17.0	Yes	814	SALON
RTU	3	LGH060H4EM1G	5	2000	375	1.0	1.0	ECM	65.03	33.62	79.0/71.7	95	105.0	84.0	480	18	25	12.7/—/17.0	Yes	961	BATHING
RTU	4	LGH156H4MS1G	13	5200	1300	1.0	3.0	3	160.28	88.16	81.6/72.5	95	260.0	208.0	480	32	35	12.0/14.1/—	No	2,286	SALES
RTU	5	LGH156H4MS1G	13	5200	1300	1.0	3.0	3	160.28	88.16	81.6/72.5	95	260.0	208.0	480	32	35	12.0/14.1/—	No	2,286	SALES
RTU	6	LGH072H4BM1G	6	2400	165	1.0	2.0	2	68.28	62.78	78.3/62.5	95	105.0	84.0	480	17	25	12.0/12.5/—	No	1,008	RECEIVING
RTU	7	LGH072H4BM1G	6	2400	430	1.1	2.0	2	77.81	43.21	79.7/71.1	95	105.0	84.0	480	17	25	12.0/12.5/—	No	1,008	FISH/RESTROOMS
RTU	8	LGH092H4MS1G	7.5	3100	415	1.1	2.0	2	87.47	63.35	79.1/66.5	95	130.0	104.0	480	20	25	12.5/14.0/—	No	1,394	VET/ BANFIELD

EQUIPMENT PROVIDED BY LENNOX NATIONAL ACCOUNTS NO SUBSTITUTES ALLOWED. CONTACT YOUR LOCAL LENNOX OFFICE FOR PRICING OR CONTRACT LENNOX NATIONAL ACCOUNTS AT 1-800-367-6285 FIELD ADJUST FAN RPM TO PROVIDE AIR QUANTITIES AS SCHEDULED ABOVE.
 - LENNOX WILL FURNISH CURBS PLUS DLPD 2510-15 DIFFUSER ASSEMBLY FOR RTU-4 & 5; SEE DETAIL ON SHEET M2.0
 - ALL FANS THAT ARE BELT DRIVEN WILL RECEIVE BELT AUTO-TENSIONER.
 - ALL RTUS TO BE FURNISHED WITH FACTORY INSTALLED NON-FUSED DISCONNECT SWITCH
 - ALL RTUS TO BE FURNISHED WITH FACTORY INSTALLED 120V GFCI CONVENIENCE OUTLET, FIELD WREDED

RTUS 1, 7 AND 8 TO BE FURNISHED WITH FACTORY INSTALLED SMOKE DETECTORS IN THE RETURN SECTION
 - COORDINATE RTU PLACEMENT WITH STRUCTURAL FRAMING
 - ALL RTUS TO BE INSTALLED WITH FULL SIZE SUPPLY AND RETURN DROPS
 - ALL RTUS TO BE INSTALLED WITH STANDARD 14" CURBS.
 - LENNOX WILL FURNISH HALL GUARDS FOR 3 thru 13 TON UNITS. CONTRACTOR SHALL FIELD INSTALL

RTUS WITH HUMIDITROL (RTU-2 & 3) SHALL BE SUPPLIED WITH DUAL HUMIDITY/TEMPERATURE SENSOR LENNOX PART NUMBER (21W6)
 - RTUS WITHOUT HUMIDITROL (RTU-1, 4, 5, 6, 7 & 8) SHALL BE SUPPLIED WITH TEMPERATURE SENSOR LENNOX PART NUMBER (94L6)
 - ALL RTUS SHALL BE FURNISHED WITH FACTORY INSTALLED GLOBAL ECONOMIZERS AND BAROMETRIC RELIEF
 - PROVIDE ALL UNITS WITH COASTAL COATING PACKAGE.

MARK	UNIT #	MANUFACTURER	MODEL #	FAN DATA			VOLTAGE	AREA SERVED	OPERATION	
				CFM	E. S.P.	H.P. OR K.W.				
EF	1	CAPTIVE AIRE	DR12HFA	350	0.5	0.25	DIRECT	120	COMPUTER/ OFFICE	CONTINUOUS ON
EF	2	CAPTIVE AIRE	DD13FA	1400	0.5	0.25	BELT	120	BATHING	CONTROLLED BY EMS
EF	3	CAPTIVE AIRE	DR50HFA	1550	0.5	0.25	DIRECT	120	RESTROOMS/ FISH EQUIP	CONTINUOUS ON
EF	4	CAPTIVE AIRE	DD15FA	1805	0.5	0.75	BELT	120	VET	CONTROLLED BY EMS
EF	5	CAPTIVE AIRE	DD11FA	600	0.375	0.25	BELT	120	CAGE	CONTINUOUS ON

- ALL CAPTIVE AIRE FANS WILL BE PART OF THE LENNOX EQUIPMENT PACKAGE
 - OPTIONS: BACKDRAFT DAMPER, BIRD SCREEN, CURB AND UNIT MOUNTED DISCONNECT SWITCH
 - FAN PLACEMENT MUST BE AT LEAST 10" FROM RTU OUTSIDE AIR HOOD, 5" MINIMUM FROM PARAPET WALL, TALLER THAN 3'-7" ABOVE ROOF AND 10'-0" MIN. FROM ROOF EDGE OR PARAPET SHORTER THAN 3'-7" ABOVE ROOF.

MARK	MANUFACTURER	MODEL #	FACE	STYLE	BORDER TYPE	FINISH	DESCRIPTION
E-1	KRUEGER	6690	24X24	PERFORATED	(F23) LAY-IN	WHITE ENAMEL	GRILLES IN FISH EQUIPMENT SHALL BE FACTORY FINISHED BLACK.
E-2	KRUEGER	56690	24X24	PERFORATED	(F23) LAY-IN	WHITE ENAMEL	ALUMINUM
R-1	KRUEGER	S80P	48X24	PERFORATED	(F23) LAY-IN, 1" FILTER FRAME	WHITE ENAMEL	HINGE FACE WITH KNURLED KNOBS, 40X18 NECK SIZE
R-2	KRUEGER	S80	SEE PLAN	LOUVERED	(F22) SURFACE MOUNT	WHITE ENAMEL	35° DEFLECTION
R-3	KRUEGER	6490	24X24	PERFORATED	(F23) LAY-IN	WHITE ENAMEL	GRILLES IN FISH EQUIPMENT SHALL BE FACTORY FINISHED BLACK.
S-1	KRUEGER	SH	24X24	LOUVERED	(F23) LAY-IN	WHITE ENAMEL	GRILLES IN FISH EQUIPMENT SHALL BE FACTORY FINISHED BLACK.
S-2	KRUEGER	880	SEE PLAN	LOUVERED	(F22) SURFACE MOUNT	WHITE ENAMEL	35° DEFLECTION
S-3	CURBUS PLUS	DLPD 2510-15		DRUM	DUCT MOUNTED	WHITE FACTORY FINISH	SALES FLOOR 4-WAY DRUM DIFFUSER, ORDER FROM LENNOX WITH UNIT.
S-4	KRUEGER	DPL	SEE PLAN	DRUM LOUVER	(F22) SURFACE MOUNT	WHITE FACTORY FINISH	ADJUST LOUVERS FOR WIDEST THROW
S-5	KRUEGER	PTBS	48x6	LINEAR SLOT	(F23C) T' ON BOTH SIDES	WHITE ENAMEL	(3) 1" SLOTS, AL BLADES, INSULATED PLENUM BOX
S-6	KRUEGER	PTBS	48x6	LINEAR SLOT	(F23C) T' ON BOTH SIDES	WHITE ENAMEL	(3) 1" SLOTS, STEEL BLADES, INSULATED PLENUM BOX
TR-1	KRUEGER	6690	24X24	PERFORATED	(F23) LAY-IN	WHITE ENAMEL	
TR-2	KRUEGER	880	SEE PLAN	LOUVERED	(F22) SURFACE MOUNT	WHITE ENAMEL	35° DEFLECTION

DEVICES SHALL BE KRUEGER UNLESS OTHERWISE SPECIFIED IN SCHEDULE
 - CONTRACTOR TO SUPPLY AND INSTALL TWO(2) 20x18 FILTERS IN R1 GRILLES IN SALON
 - ALL AIR DISTRIBUTION DEVICES LOCATED IN BATHING/DRYING AREA SHALL BE ALUMINUM CONSTRUCTION
 - ROUND CONNECTION TO MATCH ROUND DUCT DIMENSION AS SHOWN ON FLOOR PLAN, REFER TO 2M2.0, MANUFACTURER SUPPLIED TRANSITIONS ARE NOT ACCEPTABLE.
 - S4 SUPPLY VOLUME DAMPER AT DIFFUSER
 - R1 PROVIDE 4 SETS OF KNURLED KNOBS WITH GRILLE, TAPE TO INSIDE OF DIFFUSER
 - PROVIDE DIFFUSER INSULATION BLANKET ON SUPPLY DIFFUSERS IN "WET AREAS"

MARK	UNIT #	MANUFACTURER	MODEL #	CFM		VOLTAGE	AREA SERVED	OPERATION
				MIN	MAX			
MD	1	APRILAIRE	8"Ø ROUND DAMPER	10	150	6W @ 24VAC	VAULT	THERMOSTAT CONTROLLED
MD	2	APRILAIRE	10"Ø ROUND DAMPER	100	300	6W @ 24VAC	OFFICE	THERMOSTAT CONTROLLED
MD	3	APRILAIRE	8"Ø ROUND DAMPER	60	125	6W @ 24VAC	HOLDING ROOM	THERMOSTAT CONTROLLED
MD	4	APRILAIRE	8"Ø ROUND DAMPER	60	125	6W @ 24VAC	HOLDING ROOM	THERMOSTAT CONTROLLED
MD	5	APRILAIRE	8"Ø ROUND DAMPER	40	80	6W @ 24VAC	ISOLATION	THERMOSTAT CONTROLLED
MD	6	APRILAIRE	8"Ø ROUND DAMPER	40	70	6W @ 24VAC	ISOLATION	THERMOSTAT CONTROLLED

MOTORIZED DAMPERS ARE PART OF THE LENNOX EQUIPMENT PACKAGE
 - DAMPER SHALL BE DIRECTLY CONNECTED TO NECK OF DIFFUSER
 - FULLY INSULATE DIFFUSER AND DAMPER. SEE DETAIL SHEET M2.0
 - MD-3, 4, 5 & 6: SEE WIRING DIAGRAM FOR ADDITIONAL INFORMATION ABOUT CONTROLLING DAMPER AND HEATER ON SHEET M2.0
 - MD-3, 4, 5 & 6: MECHANICAL CONTRACTOR SHALL PROVIDE A 24VAC TRANSFORMER, TEMPERATURE PROBE AND TWO (2) CONTROL RELAYS FOR EACH
 - MD-1 & 2: MECHANICAL CONTRACTOR SHALL PROVIDE A 24VAC TRANSFORMER FOR EACH

HUMIDITY CONTROL
 SALON AND BATHING UNIT ARE PROVIDED WITH LENNOX HUMIDITROL DEHUMIDIFICATION SYSTEM USING THE PRODIGY CONTROL SYSTEM SET THE RELATIVE HUMIDITY @ 55% AND ENABLE THE HUMIDITROL TO RUN DURING OCCUPIED AND UNOCCUPIED HOURS. CONTACT LENNOX NATIONAL ACCOUNT TECHNICAL SUPPORT (1-800-867-6285) FOR ASSISTANCE WITH PROPER SETUP.

MARK	UNIT #	MANUFAC TURE	MODEL #	VOLTAGE	Description
EUH	1	QMARK	EFF-4004	3KW/208/ 1Ø	PROVIDE EFF-TBAR T-BAR MOUNTING, HONEYWELL TH5110D1022 THERMOSTAT CONNECTED W/ MD-3
EUH	2	QMARK	EFF-4004	3KW/208/ 1Ø	PROVIDE EFF-TBAR T-BAR MOUNTING, HONEYWELL TH5110D1022 THERMOSTAT CONNECTED W/ MD-4
EUH	3	QMARK	EFF-4004	3KW/208/ 1Ø	PROVIDE EFF-TBAR T-BAR MOUNTING, HONEYWELL T87K1007 THERMOSTAT WITH F-TR4 KIT
EUH	4	QMARK	EFF-4004	1.5KW/208/ 1Ø	PROVIDE EFF-TBAR T-BAR MOUNTING, HONEYWELL TH5110D1022 THERMOSTAT CONNECTED W/ MD-5

- ALL Q-MARK HEATERS ARE PART OF THE LENNOX EQUIPMENT PACKAGE
 - INSTALL PER MANUFACTURER INSTRUCTION.
 - FACTORY INSTALLED DISCONNECT SWITCH
 - Q-MARK HEATERS ARE MANUFACTURED BY MARLEY
 - MOUNT IN CEILING (EUH-1, 2, 3 & 4)

NOTE:
 SALES FLOOR CONCENTRIC RTU-4 & 5, ARE NOT SUPPLIED WITH DUCT SMOKE DETECTORS, PER THE 2009 IMC SECTION 606.2, THE EXCEPTION STATES THAT SMOKE DETECTORS SHALL NOT BE REQUIRED WHERE AIR DISTRIBUTION SYSTEMS ARE INCAPABLE OF SPREADING SMOKE BEYOND THE ENCLOSING WALLS, FLOORS AND CEILING OF THE ROOM OR SPACE IN WHICH THE SMOKE IS GENERATED. RTU-2, 3 & 6 ARE NOT SUPPLIED WITH DUCT SMOKE DETECTORS, THESE RTUS ARE NOT MORE THAN 2000 CFM, THIS IS NOT REQUIRED BY THE 2009 IMC TO BE FURNISHED WITH A DUCT SMOKE DETECTOR.

NOTE:
 THE GENERAL CONTRACTOR SHALL BE RESPONSIBLE FOR SCHEDULING THE TESTING, ADJUSTMENT AND BALANCING, SEE SHEET F2.0 FOR BALANCING CONTRACTORS CONTACT INFORMATION.

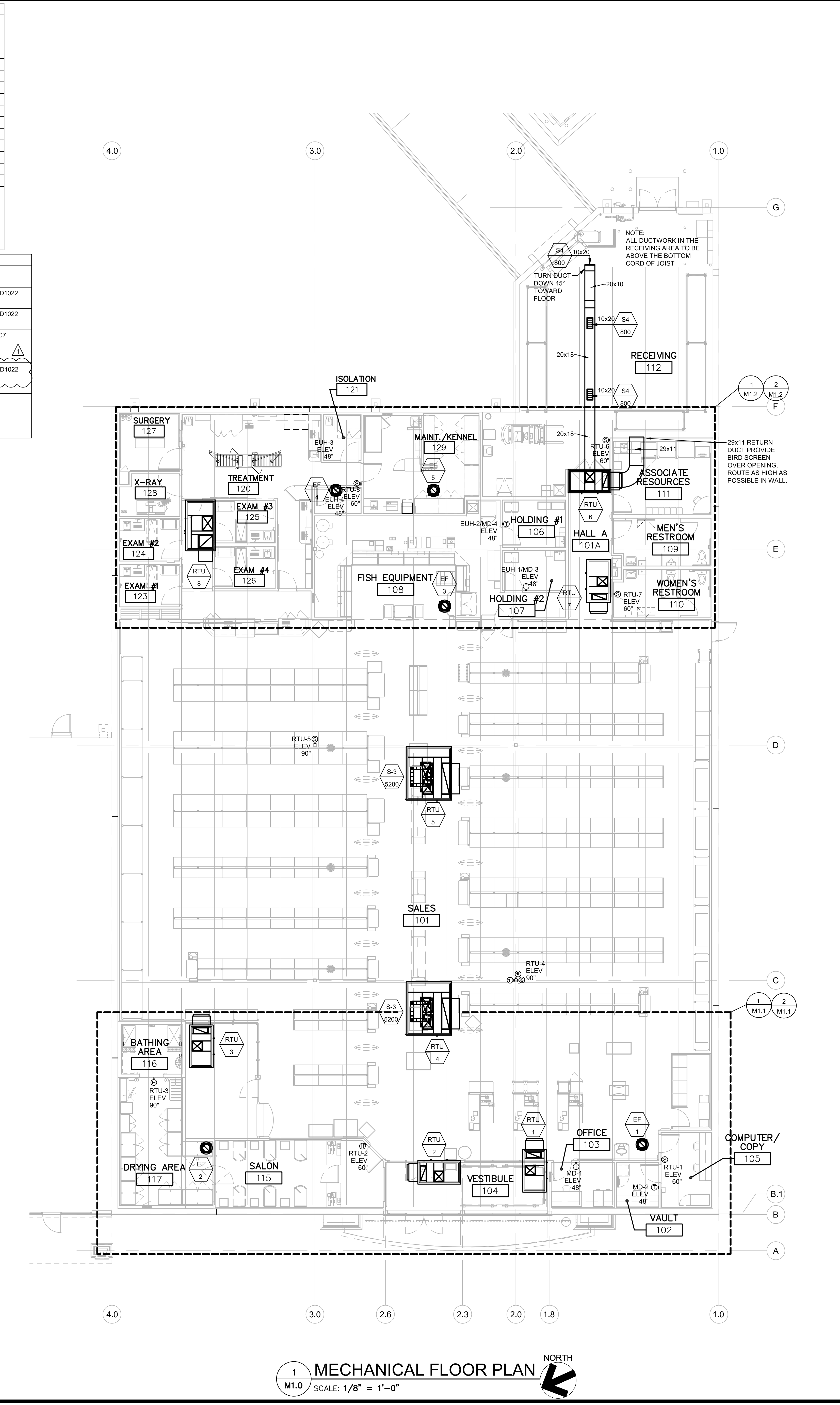
NOTE:
 ONCE POWER IS APPLIED TO THE ROOFTOP HVAC UNIT, AND THE HVAC TECHNICIAN HAS COMPLETED THE ROOFTOP UNIT STARTUP PROCEDURE, THE ROOFTOP UNITS WILL RUN IN A DEFAULT MODE FROM THE RETURN AIR SENSOR CONTROLLING A 74 DEGREE COOLING SETPOINT AND A 70 DEGREE HEATING SETPOINT WITH AN INTERMITTENT FAN.

NOTE:
 ALL DUCT DIMENSIONS SHOWN ON PLAN ARE FOR INTERIOR CLEAR OPENING SIZES. (DUCT FABRICATOR SHALL ADJUST DUCT SIZE TO ACCOMMODATE INTERNAL DUCT INSULATION).

NOTE:
 CONTRACTOR SHALL INSTALL SUPPLY DIFFUSER PACKAGE ON SALES FLOOR RTUS SO THAT THE TOP OF THE DIFFUSER IS TIGHT TO THE BOTTOM OF THE ROOF STRUCTURE, SEE DETAIL ON SHEET M2.0

NOTE:
 DURING BIDDING, THE HVAC SUB CONTRACTOR SHALL BE RESPONSIBLE FOR CONTACTING LOCAL OFFICIALS AND DETERMINE IF THE NUMBER AND LOCATION OF SMOKE DETECTORS ARE IN COMPLIANCE WITH LOCAL CODES AND PRACTICES. IF THE NUMBER OR THE NUMBER AND LOCATION OF THE SMOKE DETECTORS ARE NOT IN COMPLIANCE, THE HVAC SUB CONTRACTOR SHALL CONTACT LENNOX TO CHANGE THE LOCATION, NUMBER AND OR BOTH TO SATISFY THESE REQUIREMENTS BEFORE THE ROOFTOP UNIT ORDER IS PLACED. WHEN APPLICABLE, THE HVAC SUB CONTRACTOR SHALL BE RESPONSIBLE TO INCLUDE IN HIS BASE BID WORK, THE COST TO REMOVE, RELOCATE, AND REWIRE THE SMOKE DETECTORS IN THE LOCATIONS AND ARRANGEMENTS ACCEPTABLE TO AND AS REQUIRED BY LOCAL CODES AND OFFICIALS. IT IS PRESUMED THE HVAC CONTRACTOR IS OR WILL BE FAMILIAR WITH THE LOCAL CODES AND PRACTICES. THEREFORE, THE CONTRACTORS FAILURE TO BE THUS INFORMED SHALL NOT CONSTITUTE JUSTIFICATION FOR AN ADDITIONAL PAYMENT FOR ADDING, RELOCATING, OR REWIRING SMOKE DETECTORS.

NOTE:
 ALL SUPPLY AND RETURN DUCTWORK SHALL BE INSULATED. ALL EXPOSED SUPPLY AND RETURN DUCTWORK SHALL BE INTERNALLY LINED. DUCT WRAP MAY BE USED IN AREAS WHERE THE DUCTWORK IS CONCEALED.



MECHANICAL FLOOR PLAN
 SCALE: 1/8" = 1'-0"
 NORTH