

BRAITHWAITE CONTRUCTION COMPANY
GENERAL CONTRACTOR
3013 E. St. Bernard Hwy.
Meraux, LA 70075
State License No. 32074

FAX TRANSMITTAL SHEET

TO: American Buildings Company

DATE: April 13, 2006

NAME: Randy Davidson

PHONE NO.: 225-667-3802

FAX NO.: 225-791-4870

FROM: Paul Balbero

E-Mail: BraithwaiteCons@aol.com

PHONE NO.: (Temporary) 504-464-8376

CELL NO.: 504-915-0164

FAX NO.: (Temporary) 504-464-8373

TOTAL NUMBER OF PAGES (to include this cover sheet): 2

REFERENCE: Insul-Tech New Building, Belle Chase, Plaquemine Parish, LA

Please provide me a cost for a metal building for the reference project.

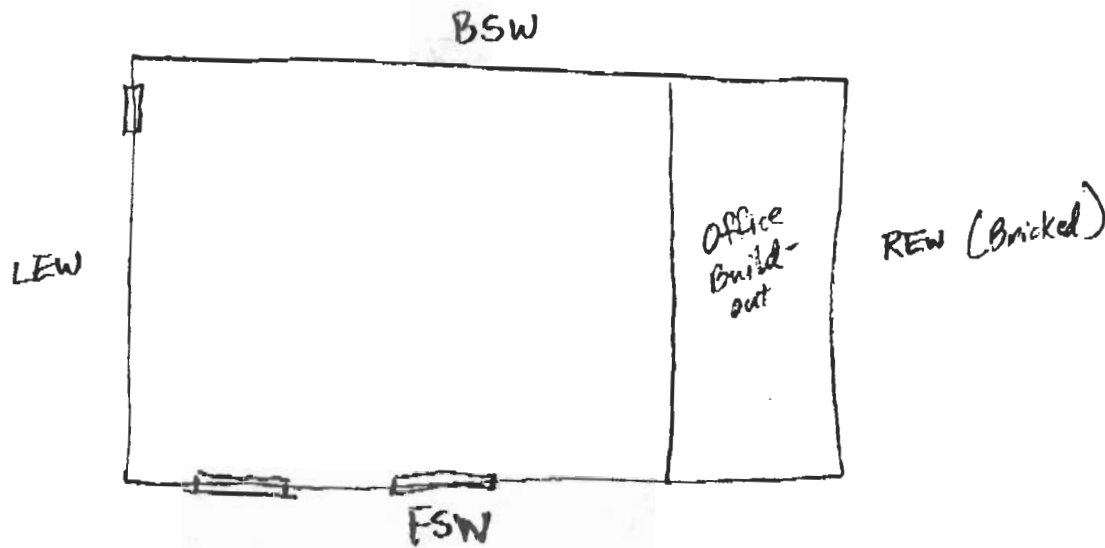
- * IBC 2003 Governing Codes
- * Pre-Engineered Metal Building, clear span, 80'w x 110'l x 20' eave
- * 24 ga. galvalume 'R' panel roof, gable, sloped 1/12 and 26 ga. colored 'R' panel wall (3 sides) and trim
- * Skylights on upper half of wall, every 3rd panel - BSW less 40', LEW, FSW less 40'
- * One end wall will be bricked all the way up - REW
- * 1/2" foam "Low-E" foil insulation for roof and walls
- * 2 each overhead door openings - 18'w x 14'h located in FSW
- * Standard gutter and downspouts - FSW & BSW
- * Office Build-out (40' x 80') at one end wall (bricked side) - REW
- * 2 each 3070 personnel walk doors with closers and lever locks - LEW & FSW
- * Design Loads: Roof Live Load - 20 PSF
Wind Load - 150 MPH

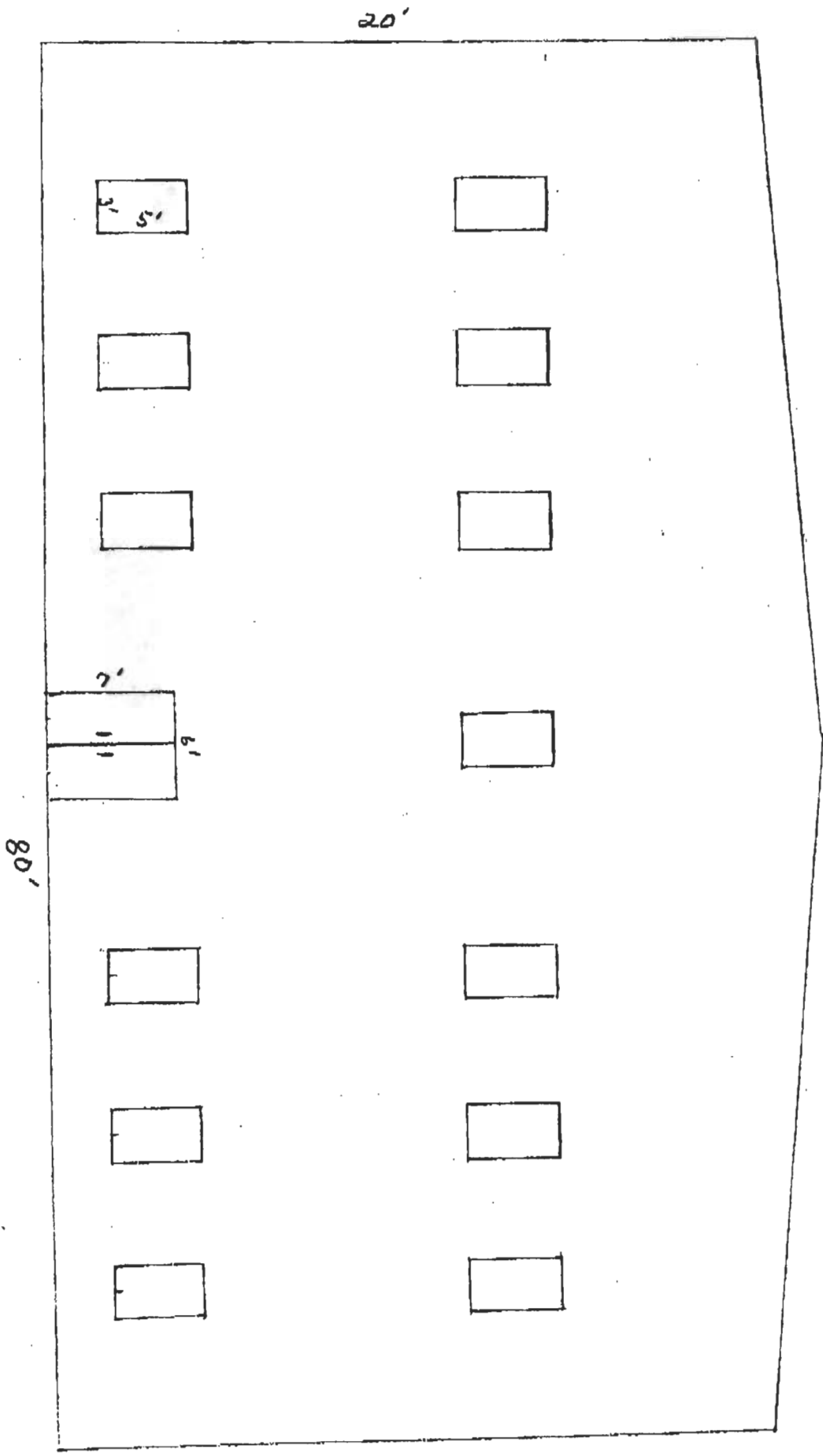
Collateral Load - 2 PSF (Electrical)

- * Sidewall Bays - 5 @ 22'
- * REW & LEW Column Spacing - 4 @ 20'
- * Bracing - Diagonal FSW, BSW, LEW, REW
- * 2 each window openings (3'w x 5'h) on each FSW & BSW from REW for Office build-out
- * Drawings - Anchor Bolt Plan - 3 ea.
Erection - 2 ea.
Letter of Certification

If you have any questions, please contact me as soon as possible.

Thanks,
Paul





12