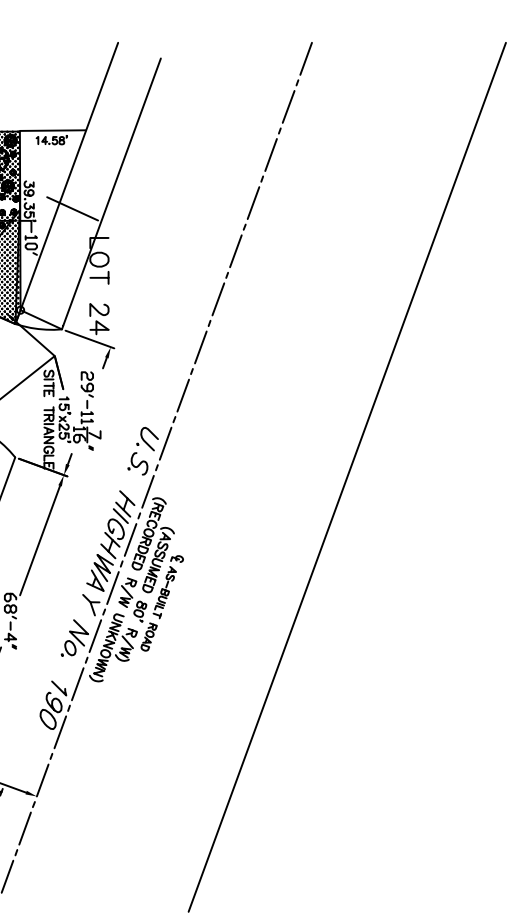
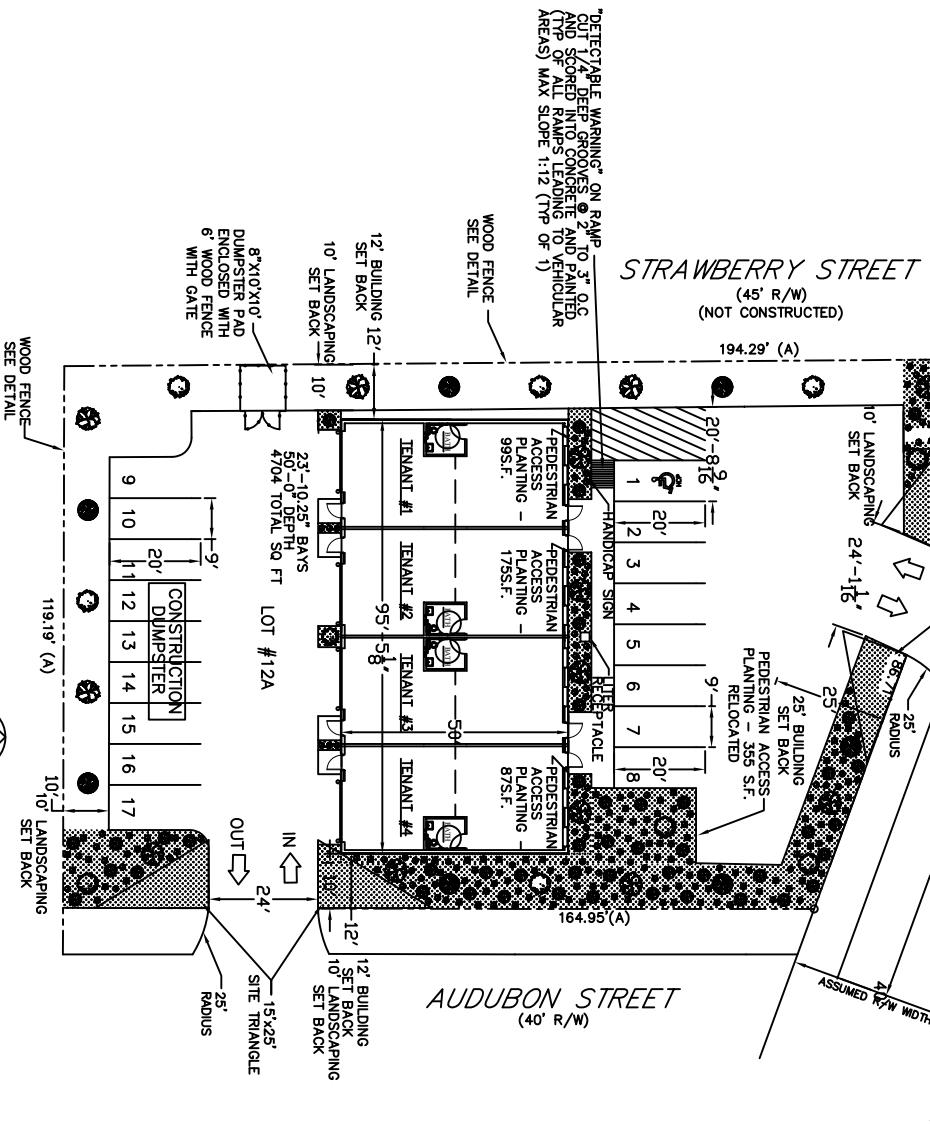
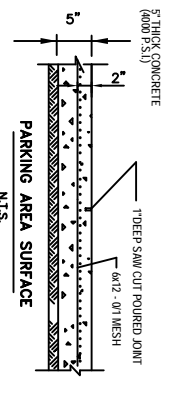
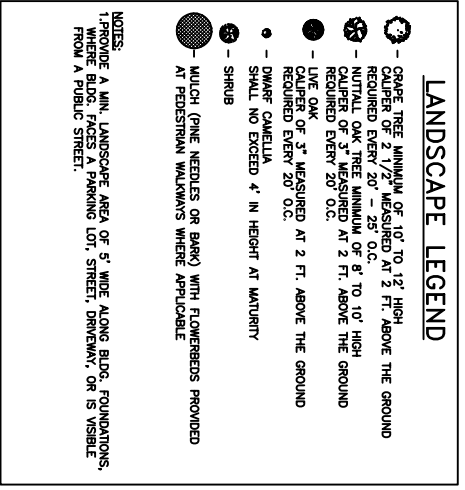
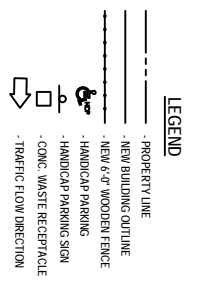


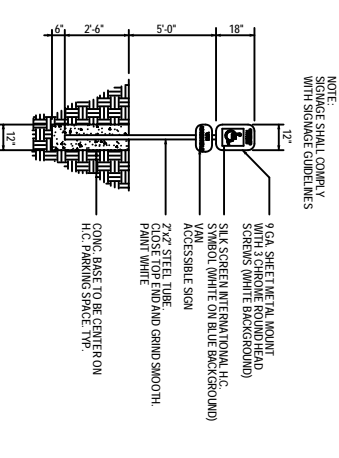
SITE PLAN
SCALE: 1"=20'-0"



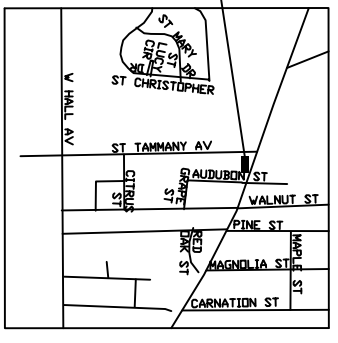
- LEGAL DESCRIPTION**
RE SUBDIVISION OF RELOCATED STRAWBERRY STREETS 11-12 13 AND NORTH 40' OF LOT 14 SQUARE 7, INTO LOTS 12A, 13A, SQUARE 7 NORTH SIDE SUBDIVISION, SECTION 3195-RHE CITY OF SLIDELL, ST. TAMMANY PARISH, LOUISIANA.
- PARKING REQUIREMENTS**
4,704 SF BUILDING TOTAL
2,352 SF OFFICE @ 388 SF/SPACE = 20.38 SPACES REQUIRED
2,352 SF WAREHOUSE @ 388 SF/SPACE = 20.38 SPACES REQUIRED
TOTAL PARKING REQUIRED = 18 SPACES (HANDICAP)
TOTAL PARKING PROVIDED = 17 SPACES (HANDICAP)
- SITE LIGHTING**
EXTERIOR LIGHTING SHALL BE SHARED OR UNIDIRECTIONAL BEYOND THE PROPERTY LINE. THE INTENSITY OF LIGHTING SHALL NOT EXCEED ONE FOOT CANDLE AS MEASURED AT THE ADJUTING PROPERTY LINE (N/A)
- SITE PLAN NOTES**
1. ROOFING MATERIAL, METAL ROOFING PANEL.
2. SIDING MATERIAL, CONVENTIONAL STUCCO VENEER
3. UTILITIES ALL UTILITIES SHALL BE PLACED UNDERGROUND
- PEDESTRIAN ACCESS REQUIREMENTS**
PEDESTRIAN ACCESS REQUIRED: 475 SQ. FT.
ACTUAL PEDESTRIAN ACCESS PROVIDED: 716 SQ. FT.



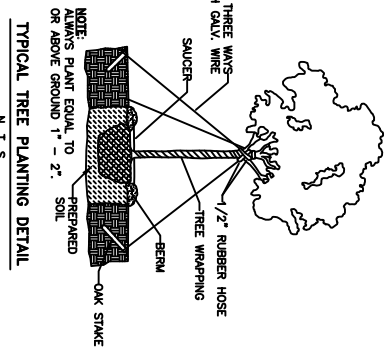
PARKING AREA SURFACE
N.T.S.



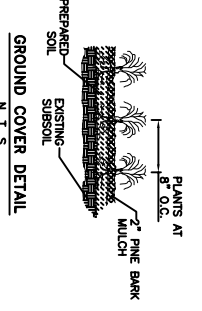
HANDICAP PARKING SIGN
N.T.S.



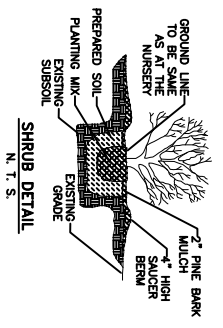
VICINITY MAP
N.T.S.



TYPICAL TREE PLANTING DETAIL
N.T.S.



GROUND COVER DETAIL
N.T.S.



SHRUB DETAIL
N.T.S.