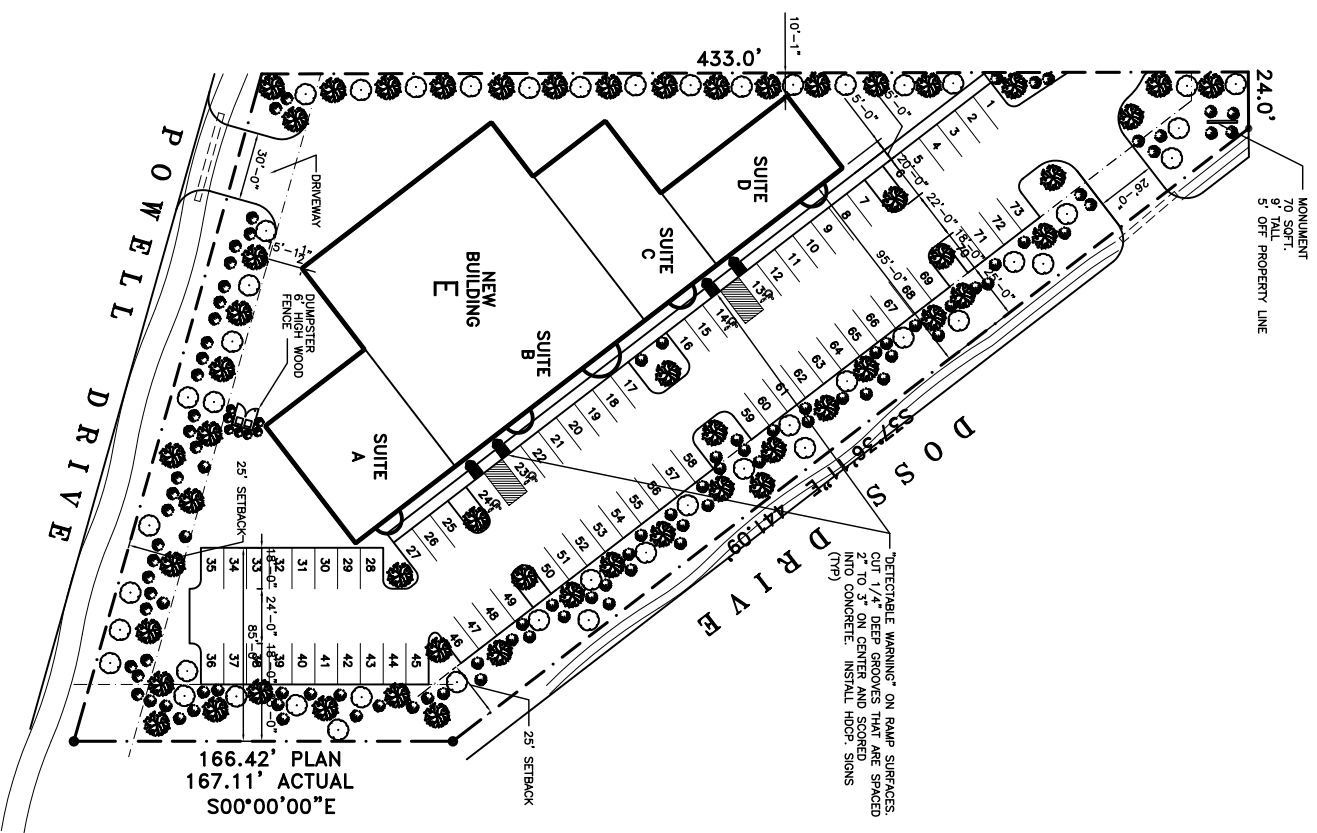


U . S . I N T E R S T A T E H W Y . 1 2



SITE PLAN
SCALE-1"=40'

- LEGEND:**
- - - PROPERTY LINE
 - - - SETBACK LINE
 - - - NEW BUILDING
 - CLASS "A" TREE-MINIMUM OF 10' TO 12' HIGH, CALIPER OF 2-1/2" MEASURED AT 4'-1/2' FT ABOVE THE GROUND
 - CLASS "B" TREE-MINIMUM OF 8' TO 10' HIGH, CALIPER OF 1-1/2" MEASURED AT 1'-1/2' FT ABOVE THE GROUND
 - SHRUB - ONE PER 10 O.C.

NOTE:
EXTERIOR LIGHTING SHALL BE SHADDED OR INWARDLY DIRECTED IN SUCH A MANNER SO THAT NO DIRECT LIGHTING OR GLARE IS CAST BEYOND THE PROPERTY LINE. THE INTENSITY OF SUCH LIGHTING SHALL NOT EXCEED ONE FOOT CANDLE AS MEASURED AT THE ADJUTING PROPERTY LINE. OUTDOOR LIGHTING ILLUMINATION SHALL FOLLOW THE RECOMMENDED GUIDELINES FOR THE LUMINESCENCE AS ESTABLISHED IN THE IESNA LIGHTING HANDBOOK.

GENERAL NOTES:
1) THE PROPERTY OWNER SHALL BE RESPONSIBLE FOR THE MAINTENANCE AND THE REPLACEMENT OF THE REQUIRED PLANT MATERIALS.
2) DURING CONSTRUCTION, PLANTING OR OPEN GROUND AREAS SURROUNDING PRESERVED TREES SHALL BE WIRED OFF WITH A PROPERLY FLAGGED, REINFORCED & ROLLED WIRE MESH.



DAMMON ENGINEERING, INC.
EMMETT DAMMON

ARCHITECT
ROBERT SOLBERGER

1095 FLORIDA AVENUE
SLIDELL, LA, 70458
985-649-5832

WEBSITE:
WWW.DAMMONENGINEERING.CO
EMAIL:
DAMMONENG@BELLSOUTH.NET

ARCHITECTURE
ENGINEERING
STUDIES
PLANNING
INVESTIGATION
EXPERT WITNESS

NEW OFFICE BUILDING

PLATFORM CRANE
POWELL DRIVE
SLIDELL, LA

SITE PLAN

REV:

SCALE: AS NOTED

JOB#: 1898

DATE: 10-8-07

SHEET 3

C-2