



DAMMON
ENGINEERING, INC.
EMMETT
DAMMON

ARCHITECT
ROBERT
SOLBERGER

1095 FLORIDA AVENUE
SLIDELL, LA. 70458
985-649-5832

WEBSITE:
WWW.DAMMONENGINEERING.CO
EMAIL:
DAMMONENG@BELLSOUTH.NET

ARCHITECTURE
ENGINEERING
STUDIES
PLANNING
INVESTIGATION
EXPERT WITNESS

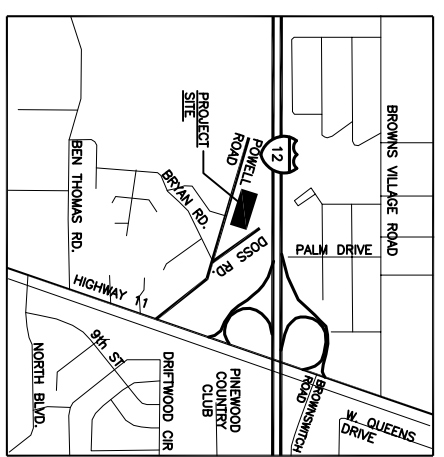
NEW OFFICE
BUILDING

PLATFORM CRANE

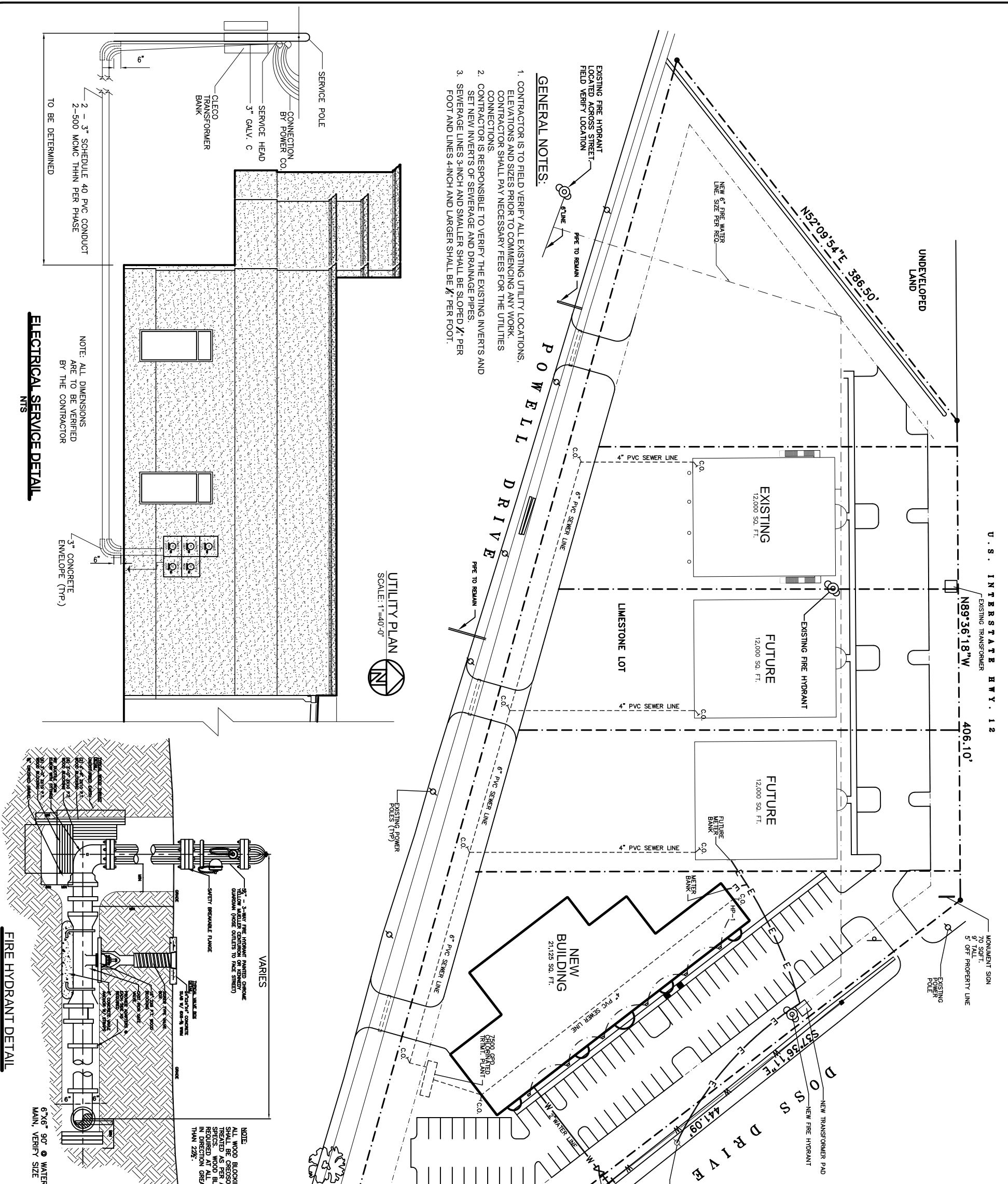
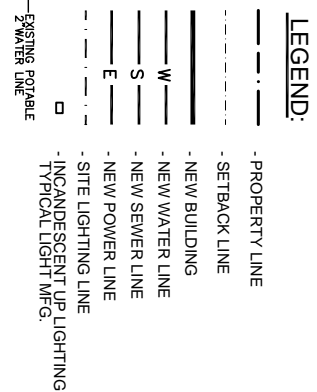
SLIDELL, LA

UTILITY
PLAN

REV:	SCALE: AS NOTED
JOB#: 1898	DATE: 10-8-07
SHEET 6	C-5
OF 25	



VICINITY MAP
N.T.S.

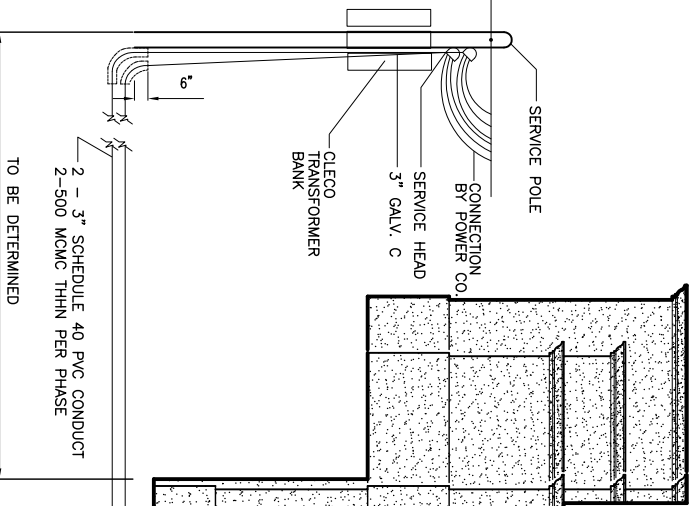


- GENERAL NOTES:**
1. CONTRACTOR IS TO FIELD VERIFY ALL EXISTING UTILITY LOCATIONS, ELEVATIONS AND SIZES PRIOR TO COMMENCING ANY WORK. CONTRACTOR SHALL PAY NECESSARY FEES FOR THE UTILITIES CONNECTIONS.
 2. CONTRACTOR IS RESPONSIBLE TO VERIFY THE EXISTING INVERTS AND SET NEW INVERTS OF SEWERAGE AND DRAINAGE PIPES.
 3. SEWERAGE LINES 3-INCH AND SMALLER SHALL BE SLOPED 1/8" PER FOOT AND LINES 4-INCH AND LARGER SHALL BE 1/4" PER FOOT.

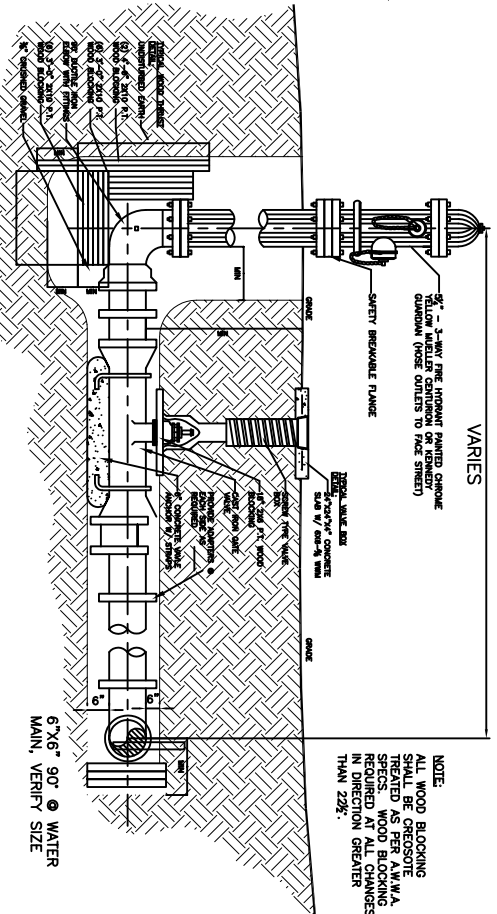
UTILITY PLAN
SCALE: 1"=40'-0"

NOTE: ALL DIMENSIONS ARE TO BE VERIFIED BY THE CONTRACTOR

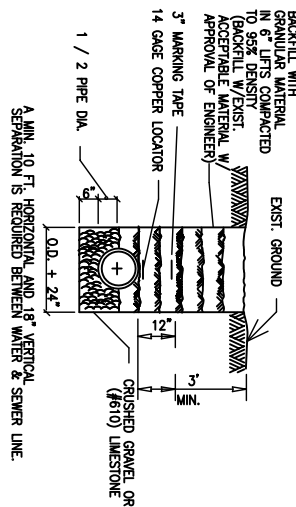
ELECTRICAL SERVICE DETAIL
N.T.S.



FIRE HYDRANT DETAIL
N.T.S.



PIPE BEDDING DETAIL FOR SEWER & WATER LINE
N.T.S.



REVISED: 01-03-08