



DAMMON
ENGINEERING, INC.
EMMETT
DAMMON

ARCHITECT
ROBERT
SOLBERGER

1095 FLORIDA AVENUE
SLIDELL, LA. 70458
985-649-5832

WEBSITE:
WWW.DAMMONENGINEERING.COM
EMAIL:
DAMMONENG@BELLSouth.NET

ARCHITECTURE
ENGINEERING
STUDIES
PLANNING
INVESTIGATION
EXPERT WITNESS

NEW OFFICE
BUILDING

PLATFORM CRANE
POWER DRIVE
SLIDELL, LA

ELECTRICAL
PLAN
SUITE A

REV:

SCALE: AS NOTED

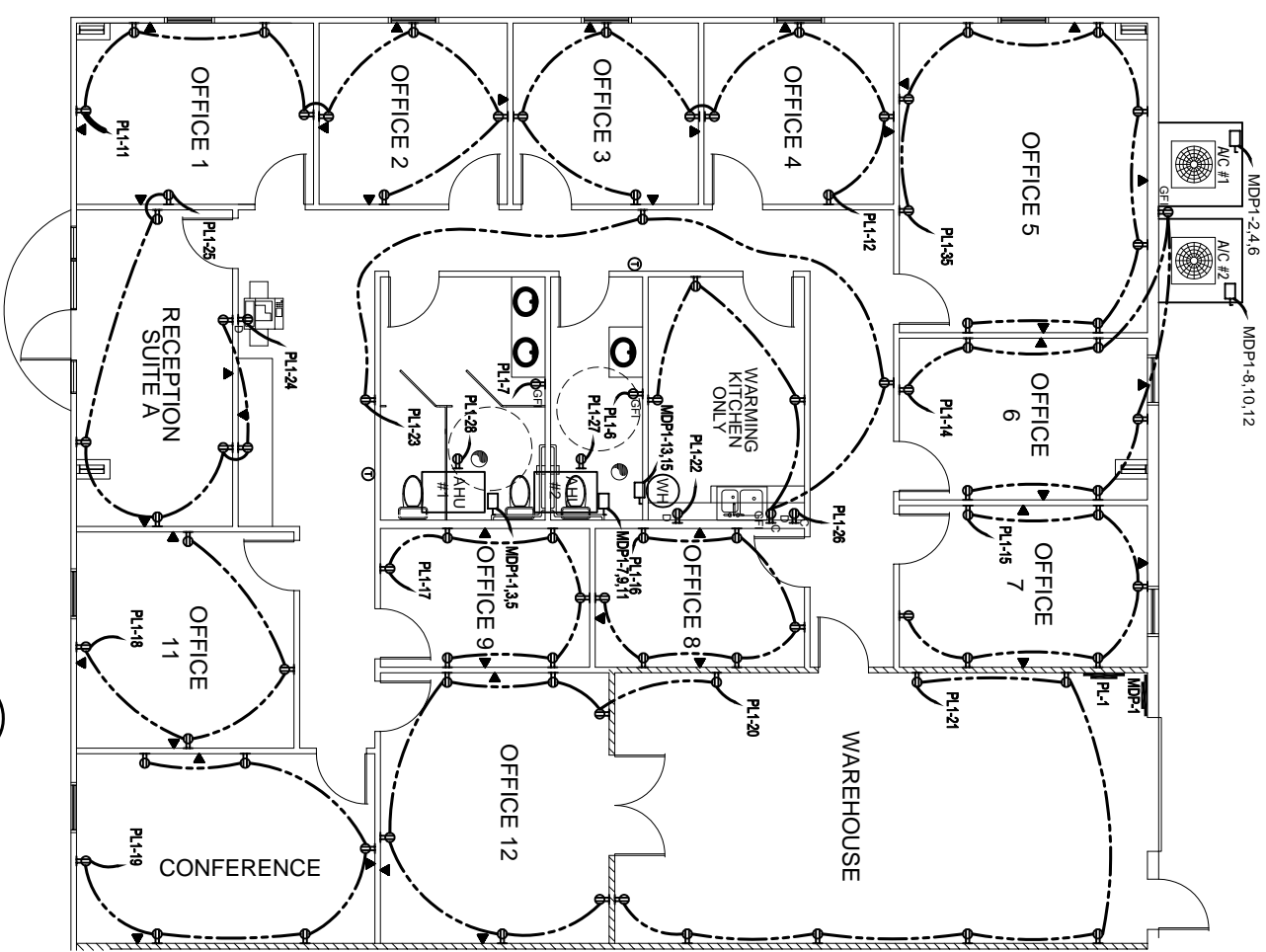
JOB#: 1898

DATE: 10-8-07

SHEET 19

E-1

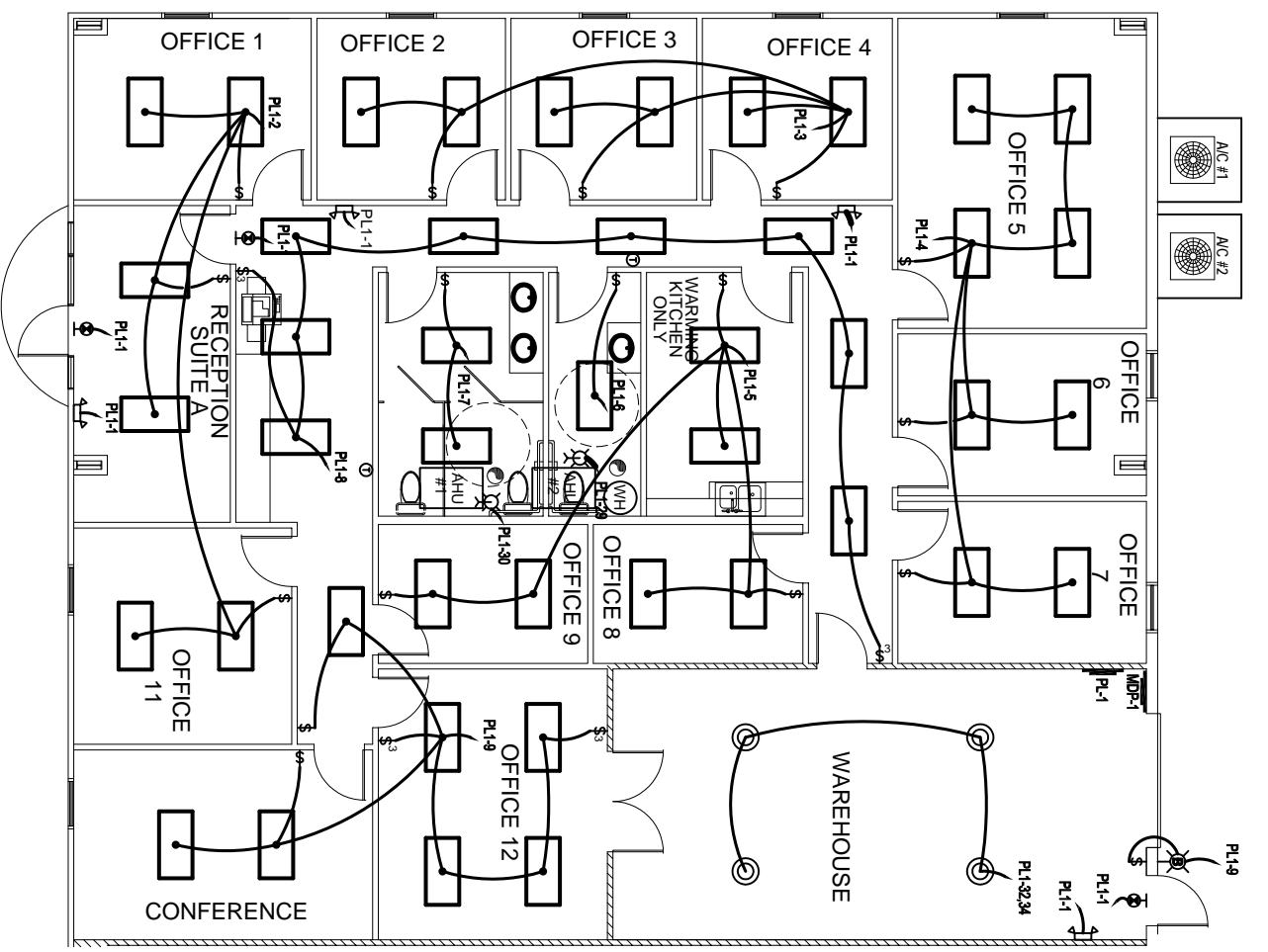
OF 25



POWER PLAN SUITE A
SCALE: 3/16"=1'-0"

FIGURE 19B-1
LOCATION: SUITE A
FEEDER SOURCE: CLEDO

REQ.	NO.	DESCRIPTION	AMPS	FEEDER	LOAD	NO.	DESCRIPTION	AMPS	FEEDER	LOAD
1	1	ALL UNDERFLOOR/VENT LAMPS	20	1	100	1	20	1	100	2
2	2	OFFICES 1, 2, 3, 4, AND 5 LAMPS	20	1	1000	1	20	1	1000	4
3	3	OFFICES 6, 7, 8, 9, 10, AND 11 LAMPS	20	1	1000	1	20	1	1000	6
4	4	OFFICES 12, 13, 14, 15, AND 16 LAMPS	20	1	1000	1	20	1	1000	6
5	5	RECEPTION SUITE LAMPS AND 20' HALL LAMPS	20	1	1000	1	20	1	1000	8
6	6	WAREHOUSE LAMPS AND 20' HALL LAMPS	20	1	1000	1	20	1	1000	10
7	7	CONFERENCE ROOM LAMPS AND 20' HALL LAMPS	20	1	1000	1	20	1	1000	10
8	8	RECEPTION SUITE LAMPS AND 20' HALL LAMPS	20	1	1000	1	20	1	1000	10
9	9	OFFICES 1 & 2 RECEPTACLES	20	1	1000	1	20	1	1000	12
10	10	OFFICES 3 & 4 RECEPTACLES	20	1	1000	1	20	1	1000	12
11	11	OFFICES 5 & 6 RECEPTACLES	20	1	1000	1	20	1	1000	12
12	12	OFFICES 7 RECEPTACLES	20	1	400	1	20	1	400	14
13	13	OFFICES 8 RECEPTACLES	20	1	400	1	20	1	400	14
14	14	OFFICES 9 RECEPTACLES	20	1	400	1	20	1	400	14
15	15	OFFICES 10 RECEPTACLES	20	1	400	1	20	1	400	14
16	16	OFFICES 11 RECEPTACLES	20	1	400	1	20	1	400	14
17	17	OFFICES 12 RECEPTACLES	20	1	400	1	20	1	400	14
18	18	LAB AND WAREHOUSE RECEPT.	20	1	400	1	20	1	400	14
19	19	CONFERENCE ROOM RECEPTACLES	20	1	400	1	20	1	400	14
20	20	RECEPTION SUITE RECEPTACLES	20	1	400	1	20	1	400	14
21	21	WAREHOUSE HALL RECEPTACLES	20	1	400	1	20	1	400	14
22	22	RECEPTION SUITE HALL RECEPTACLES	20	1	400	1	20	1	400	14
23	23	RECEPTION SUITE HALL RECEPTACLES	20	1	400	1	20	1	400	14
24	24	RECEPTION SUITE HALL RECEPTACLES	20	1	400	1	20	1	400	14
25	25	RECEPTION SUITE HALL RECEPTACLES	20	1	400	1	20	1	400	14
26	26	RECEPTION SUITE HALL RECEPTACLES	20	1	400	1	20	1	400	14
27	27	RECEPTION SUITE HALL RECEPTACLES	20	1	400	1	20	1	400	14
28	28	RECEPTION SUITE HALL RECEPTACLES	20	1	400	1	20	1	400	14
29	29	RECEPTION SUITE HALL RECEPTACLES	20	1	400	1	20	1	400	14
30	30	OFFICES 8 RECEPTACLES	20	1	1000	1	20	1	1000	14
31	31	OFFICES 9 RECEPTACLES	20	1	1000	1	20	1	1000	14
32	32	OFFICES 10 RECEPTACLES	20	1	1000	1	20	1	1000	14
33	33	OFFICES 11 RECEPTACLES	20	1	1000	1	20	1	1000	14
34	34	OFFICES 12 RECEPTACLES	20	1	1000	1	20	1	1000	14
35	35	OFFICES 13 RECEPTACLES	20	1	1000	1	20	1	1000	14
36	36	OFFICES 14 RECEPTACLES	20	1	1000	1	20	1	1000	14
37	37	OFFICES 15 RECEPTACLES	20	1	1000	1	20	1	1000	14
38	38	OFFICES 16 RECEPTACLES	20	1	1000	1	20	1	1000	14
39	39	OFFICES 17 RECEPTACLES	20	1	1000	1	20	1	1000	14
40	40	OFFICES 18 RECEPTACLES	20	1	1000	1	20	1	1000	14
41	41	OFFICES 19 RECEPTACLES	20	1	1000	1	20	1	1000	14
42	42	OFFICES 20 RECEPTACLES	20	1	1000	1	20	1	1000	14



LIGHTING PLAN SUITE A
SCALE: 3/16"=1'-0"

FIGURE 19B-1
LOCATION: SUITE A
FEEDER SOURCE: CLEDO

REQ.	NO.	DESCRIPTION	AMPS	FEEDER	LOAD	NO.	DESCRIPTION	AMPS	FEEDER	LOAD
1	1	ALL UNDERFLOOR/VENT LAMPS	20	1	100	1	20	1	100	2
2	2	OFFICES 1, 2, 3, 4, AND 5 LAMPS	20	1	1000	1	20	1	1000	4
3	3	OFFICES 6, 7, 8, 9, 10, AND 11 LAMPS	20	1	1000	1	20	1	1000	6
4	4	OFFICES 12, 13, 14, 15, AND 16 LAMPS	20	1	1000	1	20	1	1000	6
5	5	RECEPTION SUITE LAMPS AND 20' HALL LAMPS	20	1	1000	1	20	1	1000	8
6	6	WAREHOUSE LAMPS AND 20' HALL LAMPS	20	1	1000	1	20	1	1000	10
7	7	CONFERENCE ROOM LAMPS AND 20' HALL LAMPS	20	1	1000	1	20	1	1000	10
8	8	RECEPTION SUITE LAMPS AND 20' HALL LAMPS	20	1	1000	1	20	1	1000	10
9	9	OFFICES 1 & 2 RECEPTACLES	20	1	1000	1	20	1	1000	12
10	10	OFFICES 3 & 4 RECEPTACLES	20	1	1000	1	20	1	1000	12
11	11	OFFICES 5 & 6 RECEPTACLES	20	1	1000	1	20	1	1000	12
12	12	OFFICES 7 RECEPTACLES	20	1	400	1	20	1	400	14
13	13	OFFICES 8 RECEPTACLES	20	1	400	1	20	1	400	14
14	14	OFFICES 9 RECEPTACLES	20	1	400	1	20	1	400	14
15	15	OFFICES 10 RECEPTACLES	20	1	400	1	20	1	400	14
16	16	OFFICES 11 RECEPTACLES	20	1	400	1	20	1	400	14
17	17	OFFICES 12 RECEPTACLES	20	1	400	1	20	1	400	14
18	18	LAB AND WAREHOUSE RECEPT.	20	1	400	1	20	1	400	14
19	19	CONFERENCE ROOM RECEPTACLES	20	1	400	1	20	1	400	14
20	20	RECEPTION SUITE RECEPTACLES	20	1	400	1	20	1	400	14
21	21	WAREHOUSE HALL RECEPTACLES	20	1	400	1	20	1	400	14
22	22	RECEPTION SUITE HALL RECEPTACLES	20	1	400	1	20	1	400	14
23	23	RECEPTION SUITE HALL RECEPTACLES	20	1	400	1	20	1	400	14
24	24	RECEPTION SUITE HALL RECEPTACLES	20	1	400	1	20	1	400	14
25	25	RECEPTION SUITE HALL RECEPTACLES	20	1	400	1	20	1	400	14
26	26	RECEPTION SUITE HALL RECEPTACLES	20	1	400	1	20	1	400	14
27	27	RECEPTION SUITE HALL RECEPTACLES	20	1	400	1	20	1	400	14
28	28	RECEPTION SUITE HALL RECEPTACLES	20	1	400	1	20	1	400	14
29	29	RECEPTION SUITE HALL RECEPTACLES	20	1	400	1	20	1	400	14
30	30	OFFICES 8 RECEPTACLES	20	1	1000	1	20	1	1000	14
31	31	OFFICES 9 RECEPTACLES	20	1	1000	1	20	1	1000	14
32	32	OFFICES 10 RECEPTACLES	20	1	1000	1	20	1	1000	14
33	33	OFFICES 11 RECEPTACLES	20	1	1000	1	20	1	1000	14
34	34	OFFICES 12 RECEPTACLES	20	1	1000	1	20	1	1000	14
35	35	OFFICES 13 RECEPTACLES	20	1	1000	1	20	1	1000	14
36	36	OFFICES 14 RECEPTACLES	20	1	1000	1	20	1	1000	14
37	37	OFFICES 15 RECEPTACLES	20	1	1000	1	20	1	1000	14
38	38	OFFICES 16 RECEPTACLES	20	1	1000	1	20	1	1000	14
39	39	OFFICES 17 RECEPTACLES	20	1	1000	1	20	1	1000	14
40	40	OFFICES 18 RECEPTACLES	20	1	1000	1	20	1	1000	14
41	41	OFFICES 19 RECEPTACLES	20	1	1000	1	20	1	1000	14
42	42	OFFICES 20 RECEPTACLES	20	1	1000	1	20	1	1000	14

- LEGEND**
- 2"x4" RECESSED FLUORESCENT LAMP, STEEL HOUSING
 - ⊕ EMERGENCY LIGHT WITH 90 MIN. BATTERY BACKUP
 - ⊕ 120V, 20A DUPLEX RECEPTACLE
 - ⊕ GFI - 120V, GFI RECEPTACLE
 - ⊕ 120V, DEDICATED RECEPTACLE
 - ⊕ GFI - 120V, GFI RECEPTACLE AT COUNTER HEIGHT
 - ⊕ DISCONNECT
 - ⊕ POWER PANEL
 - ⊕ SWITCH
 - ⊕ 3-WAY SWITCH
 - ⊕ EXIT LIGHT, 90 MINUTE BATTERY BACK-UP
 - ⊕ THERMOSTAT
 - ⊕ HIGH BAY LIGHT
 - ⊕ TELEPHONE / COMPUTER
 - ⊕ EXHAUST FAN
 - ⊕ 20 GAL WATER HEATER
 - ⊕ PULL CHAIN LIGHT
 - ⊕ EXTERIOR WATERPROOF WALL MOUNTED LIGHT W/ 90 MIN. BATTERY BACKUP

FOR ELECTRICAL NOTES SEE E-5