

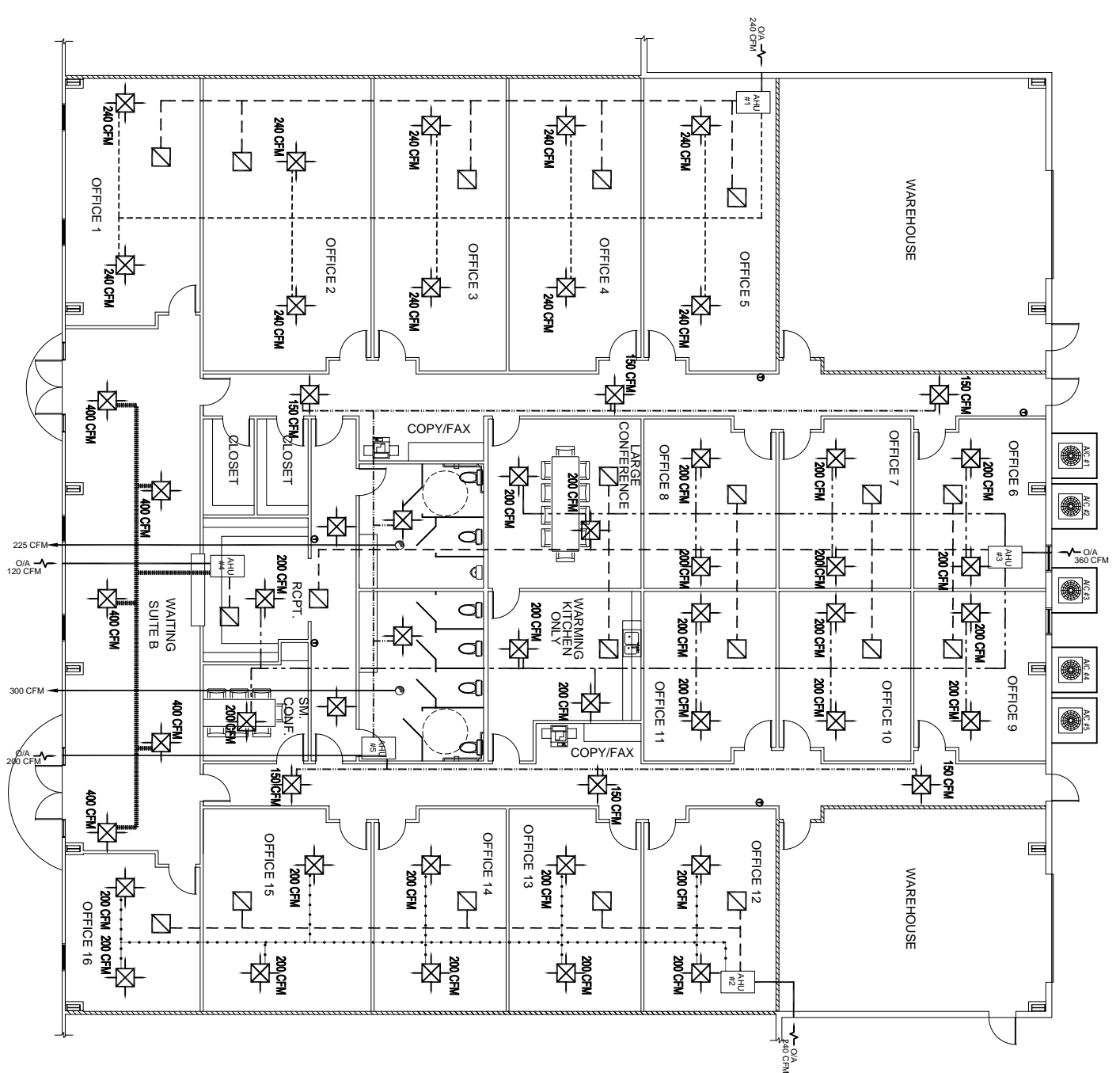
FOR MECHANICAL  
NOTES SEE M-1

**EXHAUST FAN SCHEDULE**

LOC	CFM	VOLTAGE	TYPE	MANF.
TOILETS	SEE DWG.	120	VENT/LIGHT	-

**A/C SPLIT UNIT SCHEDULE**

NO.	TOTAL RTU	CFM	O.A.	HEAT (KW)	ELECTRICAL		COMMENTS
					VOLTAGE	MCH. CKT. BRKR.	
1	72,000	2,400	240	20	208V, 3ø	-	MDP2-2,4,6 CARRIER
2	60,000	2,000	200	20	208V, 3ø	-	MDP2-8,10,12 CARRIER
3	108,000	3,600	360	20	208V, 3ø	-	MDP2-14,16,18 CARRIER
4	36,000	1,200	120	15	208V, 3ø	-	MDP2-20,22 CARRIER
5	60,000	2,000	200	20	208V, 3ø	-	MDP2-26,28,30 CARRIER



**MECHANICAL PLAN SUITE B**  
SCALE: 1/8" = 1'-0"

- LEGEND**
- SUPPLY AIR
  - RETURN AIR
  - EXHAUST FAN
  - A/C UNIT
  - THERMOSTAT
  - AHU #1
  - AHU #2
  - AHU #3
  - AHU #4
  - AHU #5
  - OUTSIDE AIR
  - RETURN AIR



**DAMMON ENGINEERING, INC.**  
EMMETT DAMMON

**ARCHITECT ROBERT SOLBERGER**

1095 FLORIDA AVENUE  
SLIDELL, LA, 70458  
985-649-5832

WWW.DAMMONENGINEERING.COM  
WEBSITE:  
EMAIL:  
DAMMONENG@BELLSOUTH.NET

ARCHITECTURE  
ENGINEERING  
STUDIES  
PLANNING  
INVESTIGATION  
EXPERT WITNESS

**NEW OFFICE BUILDING**

PLATFORM CRANE  
POWELL DRIVE  
SLIDELL, LA

**MECHANICAL PLAN SUITE B**

REV: \_\_\_\_\_

SCALE: AS NOTED

JOB#: 1898

DATE: 10-8-07

SHEET 16

**M-2**

OF 25