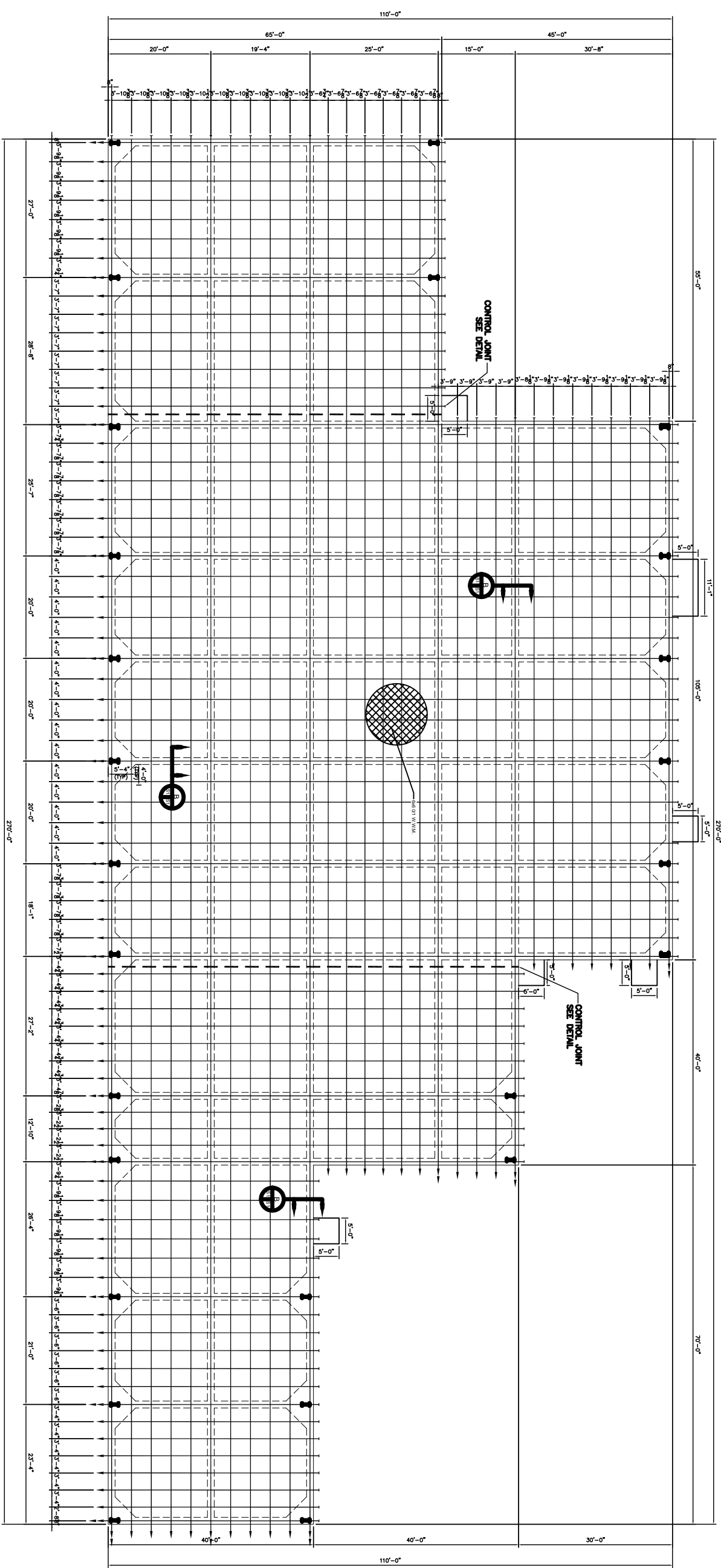


FOUNDATION GENERAL NOTES

1. THE INTENT OF THIS PLAN IS TO PROVIDE INFORMATION FOR PLACEMENT OF POST TENSION STEEL TENDONS AND TO VERIFY ALL DIMENSIONS, BEARINGS, OFFSETS, ETC., SHOWN ON THESE PLANS TO ASSURE AGREEMENT WITH ARCHITECTURAL PLANS.
2. FILL AS A MINIMUM QUALITY, SHALL BE 40% CLAY AND 60% SANDY LOAM/CLAY. PLACED IN 6" LITS AND COMPACTED TO MINIMUM 95% STANDARD PROCTOR. FOOTINGS ARE DESIGNED TO USE SOIL WITH A BEARING CAPACITY OF 2000 LBS. PER SQUARE FOOT OR MORE. IT IS RECOMMENDED THAT OWNER VERIFY ALLOWABLE SOIL BEARING CAPACITY BY CONTRACTING THE SERVICES OF A SOIL ENGINEERING COMPANY.
3. PREPARATION, PLACING AND CURING OF SAME. POSITIVE DRAINAGE MUST BE MAINTAINED AT ALL BEAM SIZES AND LOCATION AND NUMBER OF PILES SHALL NOT BE CHANGED WITHOUT APPROVAL OF THE ENGINEER, EXCEPT THAT BEAM DEPTH MAY BE EXTENDED TO REACH UNDISTURBED SOIL.
4. TIES SHALL BE PLACED AT 18" ON CENTER TO CONTROL SHRINKAGE.
5. TIES SHALL BE PLACED AT 18" ON CENTER TO CONTROL SHRINKAGE.
6. TIES SHALL BE PLACED AT 18" ON CENTER TO CONTROL SHRINKAGE.
7. WHERE ADDITIONAL REINFORCEMENT WITH REBAR IS USED IN FOOTINGS, IT SHALL CONFORM TO ASTM A618, WHICH WIRE FABRICS SHALL CONFORM TO ASTM A186.
8. HORIZONTAL REINFORCEMENT SHALL BE PLACED TO PREVENT BOTH VERTICAL AND CLEARANCE.
9. ALLOW 6" CENTERED CLEARANCE ON TENDON AXIS BY 36" LENGTH FOR STRESSING EQUIPMENT.
10. CONCRETE SHALL BE WELL CONSOLIDATED ESPECIALLY IN THE VICINITY OF TENDON ANCHORAGE.
11. CONCRETE DESIGN IS BASED UPON A CONCRETE MIX HAVING A MINIMUM OF 5.0 SACKS OF CEMENT PER CUBIC YARD AND A MAXIMUM OF 50 GALLONS OF WATER PER CUBIC YARD. SUCH CONCRETE DESIGN SHALL BE IN ACCORDANCE WITH THE ACI BUILDING CODE REQUIREMENTS (ACI 318-77). CONTRACTOR SHALL SUPPLY A LAB REPORT AT THE TIME OF STRESSING.
12. CONCRETE TO HAVE A MINIMUM COMPRESSIVE STRENGTH OF 1,500 P.S.I. AT THE TIME OF STRESSING.
13. ALL CONVENTIONAL REINFORCING STEEL SHALL BE ASTM DESIGNATION A-615 (GRADE 60) REINFORCING AND SHALL BE DETAIL AND ACCESSORIES PROVIDED IN ACCORDANCE WITH THE LATEST ACI MANUAL OF STANDARD PRACTICE FOR DETAILING REINFORCED CONCRETE.
14. ALL PRE-STRESSING STEEL SHALL CONSIST OF SPYER-WIRE STRESS RELATED STRAND CONFORMING TO ASTM A-416. MINIMUM ULTIMATE TENSILE STRENGTH SHALL BE 270,000 P.S.I. STRANDS SHALL BE COATED WITH A PERMANENT RUST PREVENTATIVE LUBRICANT AND A PLASTIC SEALANT.
15. REINFORCEMENT SHALL HAVE 3" COVER IN GRADE BEAM BOTTOMS, 3" COVER IN BEAM SIDES AND TOPS, 1-1/2" COVER IN SLAB TOPS AND BOTTOMS, UNLESS OTHERWISE SHOWN.
16. OPENINGS, INSERTS AND ANY OTHER RELATED ITEMS.
17. PLANS FOR PIPS, CONDUITS, THIMBLES, ETC. TO PASS THROUGH CONCRETE SLAB OR BEAM, MUST NOT CONFLICT WITH REINFORCING, WHERE A CONFLICT OCCURS, PIPS, CONDUIT, ETC. ARE TO TAKE PRECEDENCE.
18. PROVIDE A SINGLE LAYER OF WAPOR BARRIER UNDER CONCRETE SLAB.
19. THE TENDON LOCATION AT THE END OF GRADE BEAM IS TO BE A MINIMUM OF 6" FROM THE TOP OF SLAB.
20. TENDONS TO BE STRESSED NO EARLIER THAN 7 DAYS AND NOT LATER THAN 14 DAYS AFTER PLACEMENT OF CONCRETE.
21. FORMS TO BE STRIPPED NO LATER THAN 6 DAYS AFTER PLACEMENT OF CONCRETE.
22. STRESSING:
 1. 1/2" TENDON SHALL BE ANCHORED AT 28.8K PER STRAND, BUT SHALL BE INITIALLY STRESSED TO 33.0K PER STRAND.
 2. 3/8" TENDON SHALL BE ANCHORED AT 16.1K PER STRAND, BUT SHALL BE INITIALLY STRESSED TO 16.1K PER STRAND.
23. LOADING OF SLAB PRIOR TO TENSIONING SHALL NOT BE DONE WITHOUT THE APPROVAL AND DIRECTION OF THE SUPERVISING ENGINEER.



DAMMON ENGINEERING, INC.
EMMETT DAMMON
ARCHITECT ROBERT SOLBERGER
1095 FLORIDA AVENUE
SLIDELL, LA, 70458
985-649-5832
WWW.DAMMONENGINEERING.COM
WEBSITE:
EMAIL:
DAMMONENG@BELLSOUTH.NET

NEW OFFICE BUILDING
PLATFORM CRANE
POWELL DRIVE
SLIDELL, LA

FOUNDATION PLAN

REV: _____
SCALE: AS NOTED
JOB#: 1898
DATE: 10-8-07
SHEET 8

S-1

OF 25