



DAMMON
ENGINEERING, INC

EMMETT
DAMMON

ARCHITECT
ROBERT
SOLLBERGER

1095 FLORIDA AVENUE
SLIDELL, LA. 70458
985-649-5832

WEBSITE:
WWW.DAMMONENGINEERING.COM
EMAIL:
DAMMONENG@BELLSOUTH.NET

ARCHITECTURE
ENGINEERING
STUDIES
PLANNING
INVESTIGATION
EXPERT WITNESS

NEW
OFFICE
BUILDING

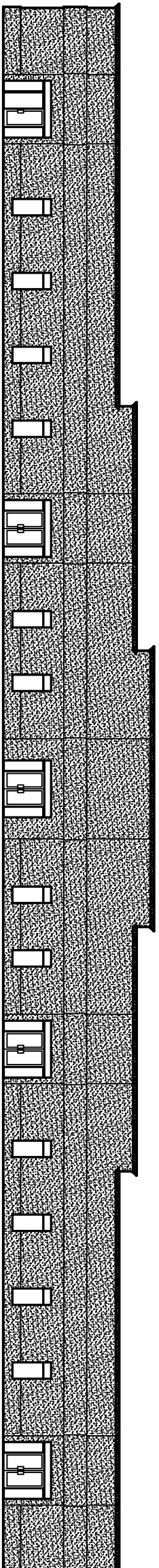
PLATFORM CRANE
POWELL DRIVE
SLIDELL, LA

JOB#: 1898

DATE: 10-8-07

SHEET 1

OF 25



OFFICE / WAREHOUSE : PLATFORM CRANE

POWELL DRIVE AND DOSS DRIVE ST. TAMMANY PARISH, LA FULLY SPRINKLED

SQUARE FEET TOTAL

BUILDING TOTAL: 21,125 SQ. FT.

NOTE:
CONTRACTOR RESPONSIBLE FOR
HIRING LICENSED SPRINKLER CONTRACTOR
TO DESIGNING AND INSTALL A FULLY
SPRINKLED BUILDING

INTERNATIONAL BUILDING CODE 2006

OCCUPANCY CLASSIFICATION:
BUSINESS, GROUP B. (SEC 304.1)
WAREHOUSE STORAGE (SEC 311.3)

OCCUPANT LOAD: (TBL 1004.1.2)

BUSINESS AREAS = 100 GROSS SQ. FT. / OCCUPANT
WAREHOUSE AREAS = 500 GROSS SQ. FT. / OCCUPANT

SUITE A
3035 S.F. OFFICE = 30 OCCUPANTS
541 S.F. WAREHOUSE = 1 OCCUPANT

SUITE B
9078 S.F. OFFICE = 97 OCCUPANTS
1020 S.F. WAREHOUSE 1 = 2 OCCUPANTS
708 S.F. WAREHOUSE 2 = 1 OCCUPANT

SUITE C
2385 S.F. OFFICE = 24 OCCUPANTS
854 S.F. WAREHOUSE = 2 OCCUPANTS

SUITE D
2128 S.F. OFFICE = 21 OCCUPANTS
690 S.F. WAREHOUSE = 1 OCCUPANTS

EXIT ACCESS REQUIREMENTS: (SEC 1016)
1 EXIT REQUIRED FOR > 49 OCCUPANTS IN BUSINESS OCCUPANCY
EXIT ACCESS TRAVEL DISTANCE = 300' SPRINKLED

MAXIMUM TRAVEL DISTANCE BY SUITE:
SUITE A = 86'-0"
SUITE B = 65'-0"
SUITE C = 76'-0"
SUITE D = 63'-0"

ALLOWABLE HEIGHT AND BLDG. AREA: (TBL 503)
B=23000 SQ.FT. / 4 STORY ALLOWED. THIS PROJECT 1 STORY / 21,125 PER STORY
CONSTRUCTION CLASSIFICATION: (SEC 602.5)
TYPE II B

FIRE RESISTANCE RATING REQUIREMENTS FOR BLDG. ELEMENTS: (TBL 601)
STRUCTURAL FRAME= 0 HRS.
BEARING WALLS (INTERIOR AND EXTERIOR)= 0 HRS.
NON-BEARING WALLS= 0 HRS.
FLOOR CONSTRUCTION= 0 HRS.
ROOF CONSTRUCTION= 0 HRS.

FIRE RESISTANCE RATING REQUIREMENTS FOR EXTERIOR WALLS: (TBL 602)
EXTERIOR WALLS WITH >10' < 30' FIRE SEPARATION DISTANCE= 0 HRS.

FIRE ALARM SYSTEM REQUIREMENTS: (SEC 907)
THIS BLDG. DOES NOT REQUIRE A FIRE ALARM SYSTEM IN ACCORDANCE WITH SEC 907.2.2

FIRE PROTECTION SYSTEM REQUIREMENTS: (SEC 903)
THIS BLDG. DOES NOT REQUIRE A FIRE PROTECTION SYSTEM IN ACCORDANCE WITH SEC 903.2

CONSTRUCTION DOCUMENTS: (SEC 1603)
THIS BLDG. SHALL BE DESIGNED IN ACCORDANCE WITH IBC SECTION 1609 AS A
PARTIALLY ENCLOSED BLDG. USING THE FOLLOWING INFORMATION:

BASIC WIND SPEED (3 SECOND GUSTS)= 130 MPH (FIG. 1609)

IMPORTANCE FACTOR- CATEGORY II BLDG. IE = 1.00, IS = 1.0, IW = 1.00 (TBL 1604.5)

EXPOSURE B. DETERMINATION OF WIND LOADS SHALL BE IN ACCORDANCE WITH
IBC SEC 1609.4

MINIMUM LIVE LOADS SHALL BE DETERMINED IN ACCORDANCE WITH TBL 1607.1

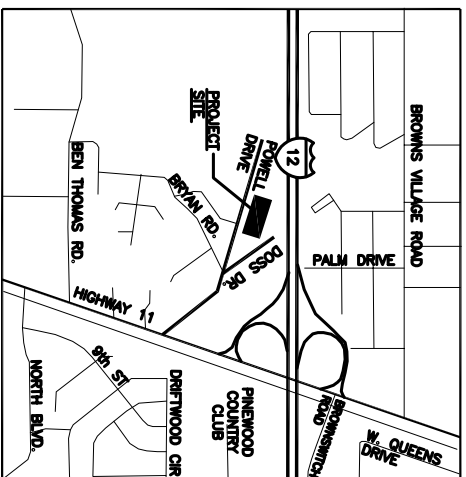
GROUND SNOW LOADS= 5 PSF (FIG. 1608.2)

BASED ON THE SURVEY OF THIS PROPERTY BY J.V. BURKES & ASSOCIATES, INC.
THIS PROPERTY IS IN A SPECIAL FLOOD HAZARD AREA.

F.I.R.M. COMMUNITY MAP NO. 225205 0420 E. DATE 4/21/99

FLOOD ZONE: A1; BASE FLOOD ELEVATION 16'

ALL WAREHOUSES WILL BE USED FOR STORAGE OF NON COMBUSTIBLE MATERIALS.



VICINITY MAP
112
11

DETAILED BUILDING REQUIREMENTS (MAIN WIND FORCE RESISTING COMPONENTS)

- THE DESIGN, FABRICATION AND ERECTION OF STRUCTURAL STEEL FOR BUILDINGS AND STRUCTURES SHALL BE IN ACCORDANCE WITH EITHER THE AISC LOAD AND RESISTANCE FACTOR DESIGN SPECIFICATION FOR STRUCTURAL STEEL BUILDINGS (AISC-LRFD), AISC SPECIFICATION FOR STRUCTURAL STEEL BUILDINGS-ALLOWABLE STRESS DESIGN (AISC-ASD) OR AISC SPECIFICATION FOR THE DESIGN OF STEEL HOLLOW STRUCTURAL SECTIONS (AISC-HSS). WIND LOAD DESIGN OF 130 MPH.
- ROOF COVERING HAS BEEN DESIGNED IN ACCORDANCE WITH THE REQUIREMENTS SET FORTH IN IBC SECTION 1507
- 7/16" THICK STRUCTURAL WOOD PANELS AND ATTACHMENT HARDWARE SHALL BE PROVIDED FOR BUILDING OCCUPANCY THE PANELS SHALL BE NUMBERED FOR EACH GLEUED OPENING AND SHALL BE STORED ON SITE PERMANENTLY (IBC 1606.1.4, EXCEPTION)

CONTRACTOR NOTE
EACH CONTRACTOR RESPONSIBLE FOR THE CONSTRUCTION OF A MAIN WIND-FORCE-RESISTING COMPONENT OF THIS BUILDING SHALL SUBMIT A WRITTEN CONTRACTOR'S STATEMENT OF RESPONSIBILITY TO THE BUILDING OFFICIAL AND OWNER PRIOR TO COMMENCEMENT OF THE WORK ON THAT COMPONENT. (IBC 1706.3)

INDEX OF DRAWINGS

DWG#	DRAWING NAME	REVISED
C-1	COPY OF SURVEY	
C-2	SITE LAYOUT	
C-3	PAVING PLAN	
C-4	DRAINAGE PLAN	
C-5	UTILITY PLAN	
C-6	SILT FENCE DETAILS	
S-1	FOUNDATION LAYOUT	
A-1	FIRST FLOOR PLAN	
A-2	BUILDING ELEVATIONS	
A-3	SECTION	
A-4	REFLECTED CEILING PLAN	
H-1	HANDICAP NOTES	
H-2	HANDICAP NOTES	
M-1	MECHANICAL PLAN SUITE A	
M-2	MECHANICAL PLAN SUITE B	
M-3	MECHANICAL PLAN SUITE C	
M-4	MECHANICAL PLAN SUITE D	
E-1	LIGHTING AND POWER PLAN SUITE A	
E-2	LIGHTING AND POWER PLAN SUITE B	
E-3	LIGHTING AND POWER PLAN SUITE C	
E-4	LIGHTING AND POWER PLAN SUITE D	
E-5	ELECTRICAL NOTES & ONE LINE	
P-1	PLUMBING PLAN	
P-2	PLUMBING RISERS & NOTES	