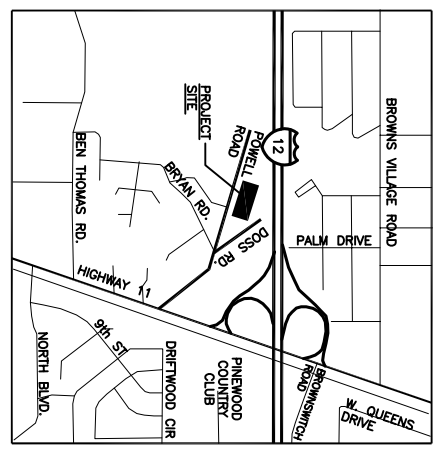


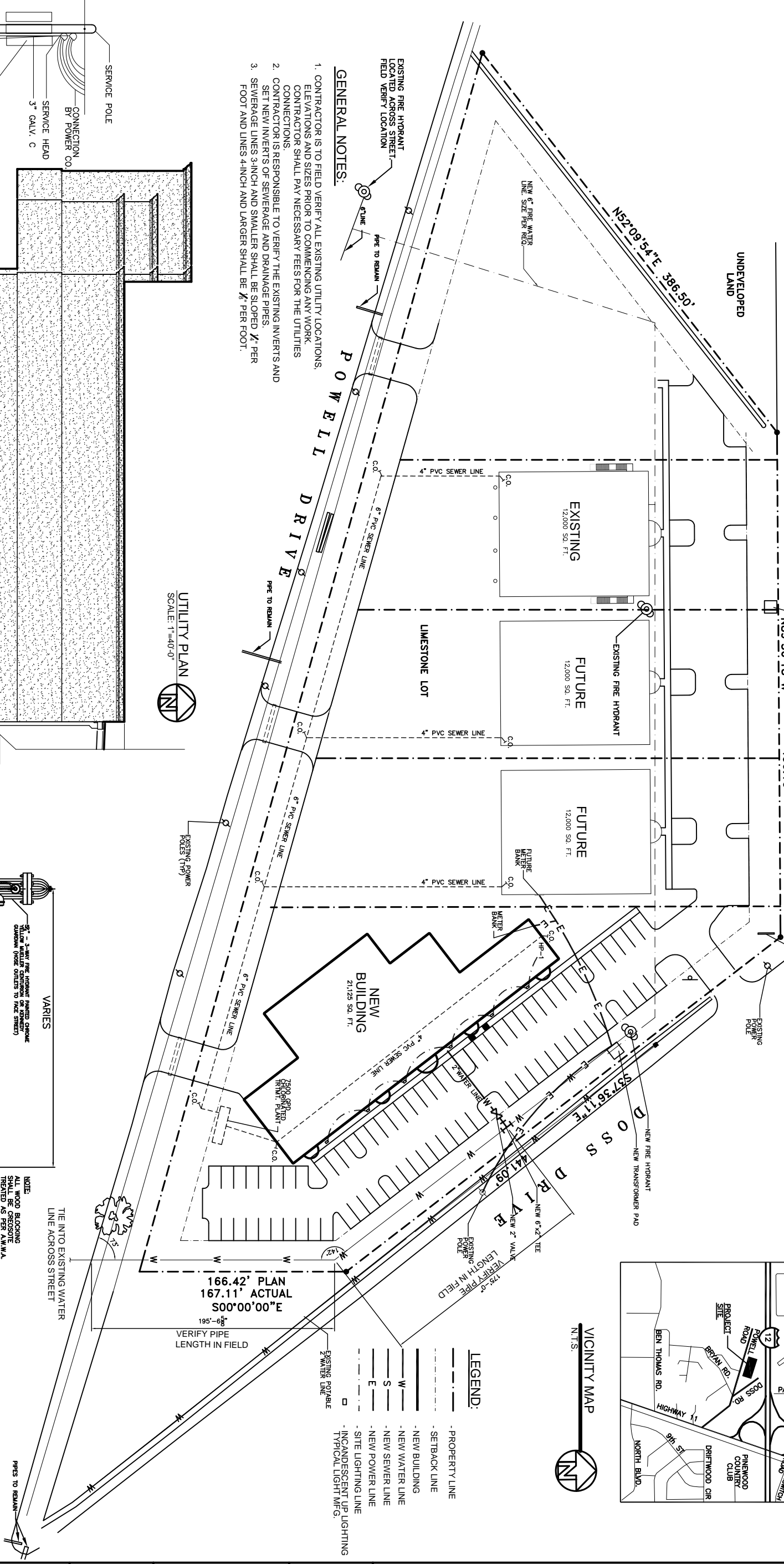
U.S. INTERSTATE HWY. 12  
EXISTING TRANSFORMER



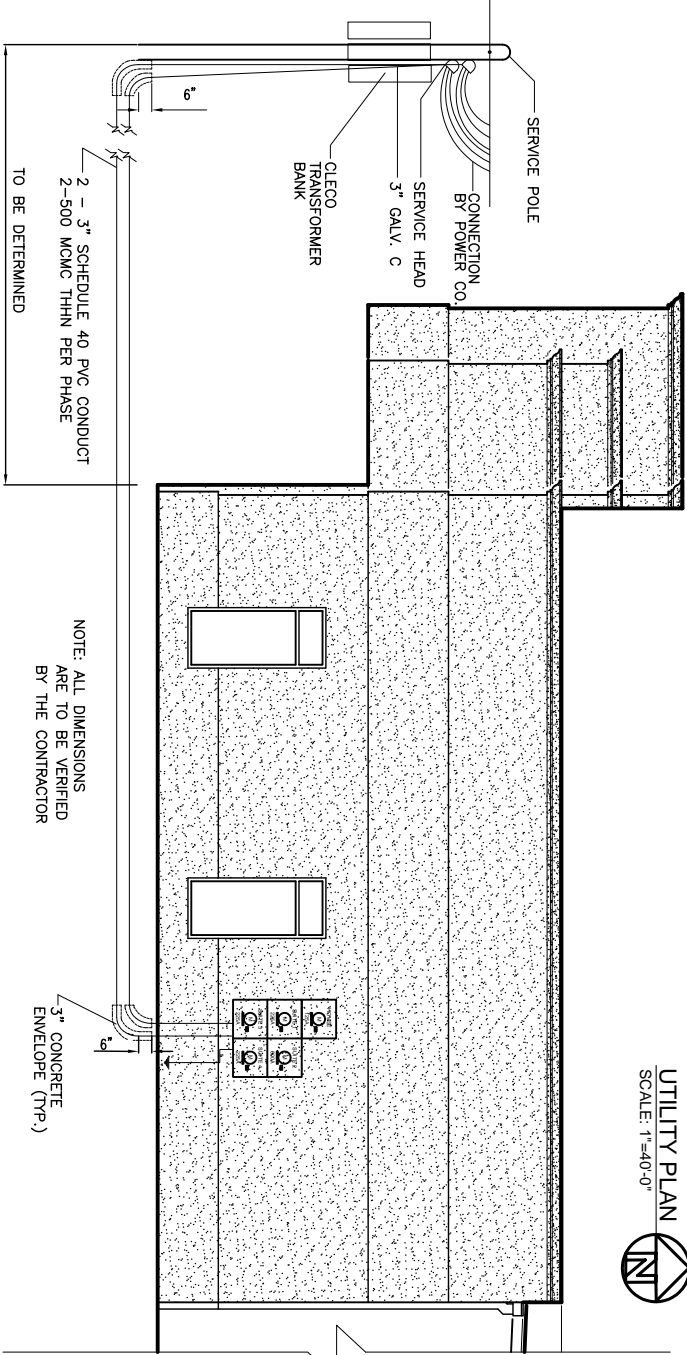
VICINITY MAP  
N.T.S.

- GENERAL NOTES:**
1. CONTRACTOR IS TO FIELD VERIFY ALL EXISTING UTILITY LOCATIONS, ELEVATIONS AND SIZES PRIOR TO COMMENCING ANY WORK. CONTRACTOR SHALL PAY NECESSARY FEES FOR THE UTILITIES CONNECTIONS.
  2. CONTRACTOR IS RESPONSIBLE TO VERIFY THE EXISTING INVERTS AND SET NEW INVERTS OF SEWERAGE AND DRAINAGE PIPES.
  3. SEWERAGE LINES 3-INCH AND SMALLER SHALL BE SLOPED  $\frac{1}{8}$ " PER FOOT AND LINES 4-INCH AND LARGER SHALL BE  $\frac{1}{4}$ " PER FOOT.

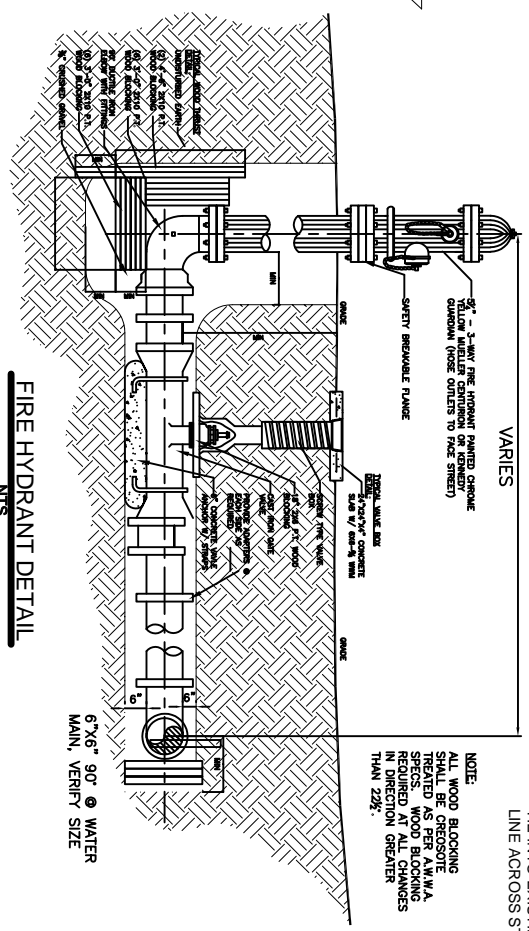
UTILITY PLAN  
SCALE: 1"=40'-0"



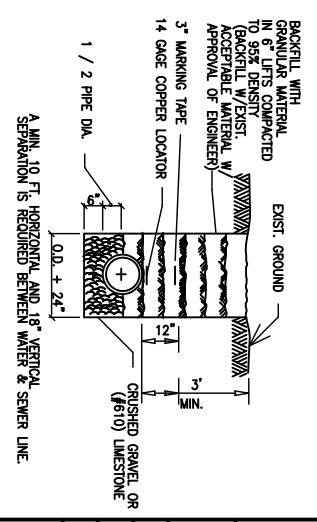
ELECTRICAL SERVICE DETAIL  
N.T.S.



FIRE HYDRANT DETAIL  
N.T.S.



PIPE BEDDING DETAIL  
FOR SEWER & WATER LINE  
N.T.S.



<p>ARCHITECT <b>ROBERT SOLBERGER</b></p> <p>1095 FLORIDA AVENUE SLIDELL, LA, 70458 985-649-5832</p> <p>WEBSITE: WWW.DAMMONENGINEERING.COM</p> <p>EMAIL: DAMMONENG@BELLOUTH.NET</p>	<p><b>DAMMON ENGINEERING, INC.</b> EMMETT DAMMON</p>	<p>NEW OFFICE BUILDING</p>	<p>PLATFORM CRANE</p>	<p>SLIDELL, LA</p>	<p>UTILITY PLAN</p>
		<p>EXPERT WITNESS</p>	<p>INVESTIGATION</p>	<p>PLANNING</p>	<p>STUDIES</p>
		<p>ENGINEERING</p>	<p>ARCHITECTURE</p>	<p>PROPERTY LINE</p>	<p>SETBACK LINE</p>
		<p>NEW WATER LINE</p>	<p>NEW SEWER LINE</p>	<p>NEW POWER LINE</p>	<p>SITE LIGHTING LINE</p>
		<p>INCANDESCENT UP LIGHTING TYPICAL LIGHT M.F.G.</p>	<p>EXISTING POTABLE WATER LINE</p>	<p>EXISTING FIRE HYDRANT</p>	<p>EXISTING FIRE HYDRANT</p>
		<p>EXIST. GROUND</p>	<p>BRICKELL WITH GRANULAR MATERIAL IN 6" LIFTS COMPACTED TO 95% DENSITY (BRICKELL W/EXIST. APPROVED MATERIAL W/ APPROVAL OF ENGINEER)</p>	<p>3" MARKING TAPE</p>	<p>14 GAGE COPPER LOCATOR</p>
<p>CRUSHED GRAVEL OR (#610) LIMESTONE</p>	<p>2"</p>	<p>3"</p>	<p>1"</p>		