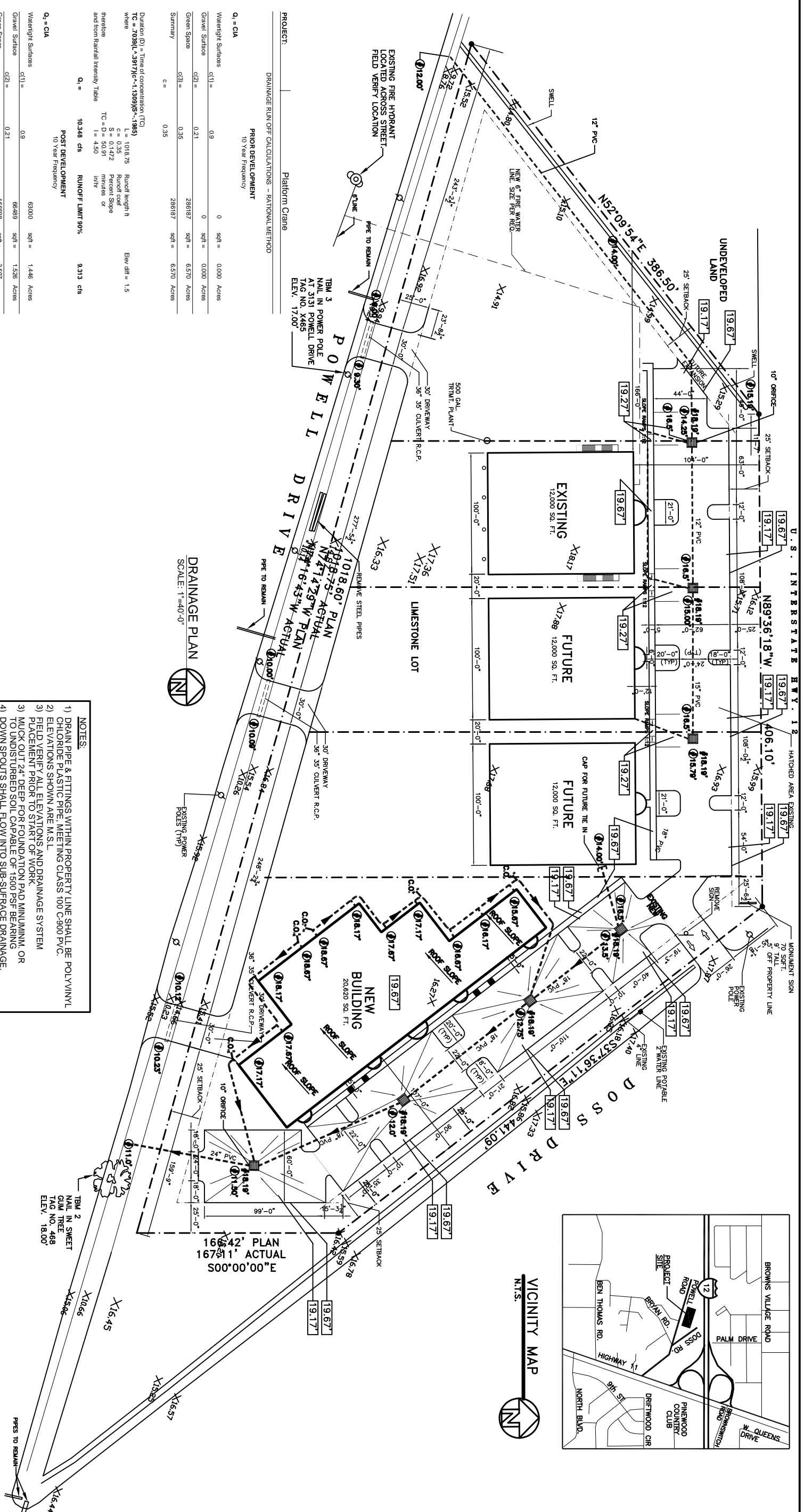


VICINITY MAP  
N.T.S.

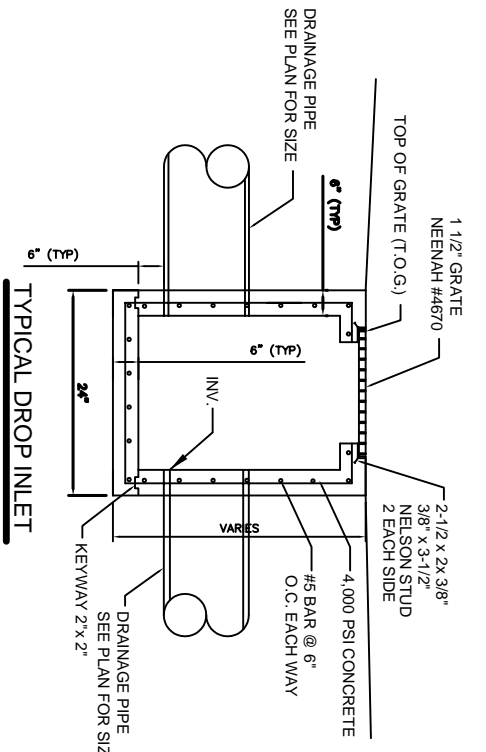
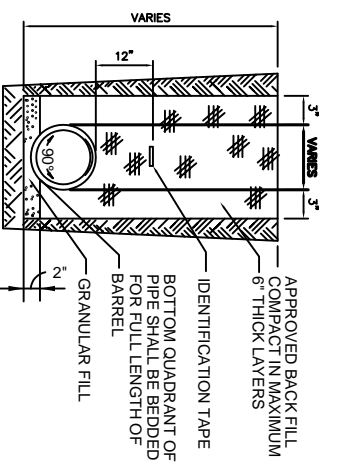


DRAINAGE PLAN  
SCALE: 1"=40'-0"

**LEGEND:**

- PROPERTY LINE
- SERVITUDE / EASEMENT
- SETBACK
- NEW BUILDING
- NEW DRAIN LINE
- NEW DROP INLET W/TEMP. SILT FENCING
- EXPANSION JOINT
- CONTROL JOINT
- SLOPE LINES
- T.O. GRATE ELEVATION
- INVERT ELEVATION
- NEW ELEVATIONS
- EXISTING ELEVATIONS
- TEMPORARY SILT FENCING

- NOTES:**
- 1) DRAIN PIPE & FITTINGS WITHIN PROPERTY LINE SHALL BE POLYVINYL CHLORIDE PLASTIC PIPE, MEETING CLASS 100 C-900 PVC.
  - 2) ELEVATIONS SHOWN ARE M.S.L.
  - 3) FIELD VERIFY ALL ELEVATIONS AND DRAINAGE SYSTEM PLACEMENT PRIOR TO START OF WORK.
  - 3) NUCC OUT 24" DEEP FOR FOUNDATION PAD MINIMUM, OR TO UNDISTURBED SOIL CAPABLE OF 1500 PSF BEARING.
  - 4) DOWN SPOUTS SHALL FLOW INTO SUB-SURFACE DRAINAGE.



**Q<sub>1</sub> = CIA**

Watersight Surface	d(1) = 0.9	sqft = 0	0.000 Acres
Gravel Surface	d(2) = 0.21	286187	6.570 Acres
Green Space	d(3) = 0.35	286187	6.570 Acres
Summary	c = 0.35		

**Q<sub>2</sub> = CIA**

Watersight Surface	d(1) = 0.9	sqft = 1,446 Acres	
Gravel Surface	d(2) = 0.21	66489	1.526 Acres
Green Space	d(3) = 0.21	156698	3.597 Acres
Summary	c = 0.44	286187	6.570 Acres

Duration (D) = Time of concentration (TC)  
 TC = 7039(L<sup>0.3917</sup>C<sup>-1.1309</sup>)S<sup>-1.1985</sup>  
 where  
 L = 1018.75 Runoff length ft  
 C = 0.352 Runoff coefficient  
 S = 0.1472 Percent Slope  
 TC = D = 50.871 minutes of  
 and from Rainfall Intensity Table  
 I = 4.50 in/hr

**RESULTS**

DEFLECTION REQUIRED Q<sub>1</sub>-Q<sub>2</sub> 12.866 cfs  
 ONE HOUR DETENTION 45304.4 cft  
 DETENTION DIMENSIONS 62 feet  
 WIDTH 745 feet  
 LENGTH 745 feet  
 T.O. GRATE ELEVATION 0.38 feet

**DISCHARGE END AREA CALCULATIONS**

where Q is allowable run off

Q = ca(2gh)<sup>1/2</sup>  
 Allowable run off Q = 9.313 cfs  
 Friction loss factor c = 0.98 coefficient  
 Acceleration g = 32.2 ft/sec<sup>2</sup>  
 Height above invert f = 3.50 feet  
 End area A = 0.53 sqft

REQUIRED CONDUIT = 10.77 inch diameter

**DAMMON ENGINEERING, INC.**  
**EMMETT DAMON**  
 ARCHITECT  
**ROBERT SOLBERGER**  
 1095 FLORIDA AVENUE  
 SLIDELL, LA, 70458  
 985-649-5332

WEBSITE: WWW.DAMMONENGINEERING.CO  
 EMAIL: DAMMONENG@BELLSOUTH.NET

**NEW OFFICE BUILDING**

PLATFORM CRANE

SLIDELL, LA

**DRAINAGE PLAN**

REV: \_\_\_\_\_

SCALE: AS NOTED

JOB#: 1898

DATE: 10-8-07

SHEET 5

**C-4**

OF 25