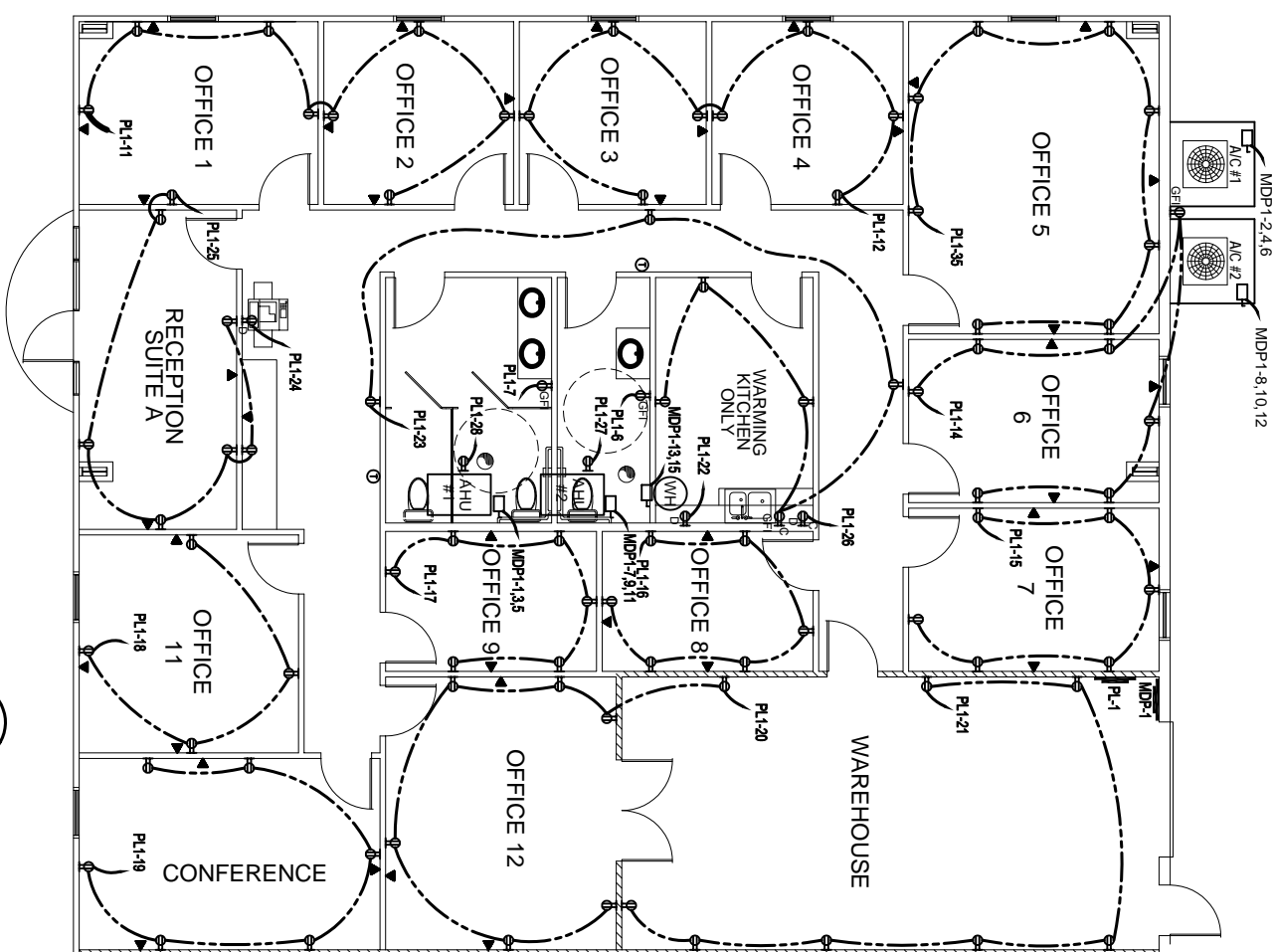


LIGHTING PLAN SUITE A  
SCALE: 3/16"=1'-0"

NO.	TYPE	LOCATION	AMPS	WATTAGE	LOAD	NO.	TYPE	LOCATION	AMPS	WATTAGE	LOAD
1	PL-1	OFFICE 1	1.0	100	100	1	PL-1	OFFICE 1	1.0	100	100
2	PL-2	OFFICE 2	1.0	100	100	2	PL-2	OFFICE 2	1.0	100	100
3	PL-3	OFFICE 3	1.0	100	100	3	PL-3	OFFICE 3	1.0	100	100
4	PL-4	OFFICE 4	1.0	100	100	4	PL-4	OFFICE 4	1.0	100	100
5	PL-5	OFFICE 5	1.0	100	100	5	PL-5	OFFICE 5	1.0	100	100
6	PL-6	OFFICE 6	1.0	100	100	6	PL-6	OFFICE 6	1.0	100	100
7	PL-7	OFFICE 7	1.0	100	100	7	PL-7	OFFICE 7	1.0	100	100
8	PL-8	OFFICE 8	1.0	100	100	8	PL-8	OFFICE 8	1.0	100	100
9	PL-9	OFFICE 9	1.0	100	100	9	PL-9	OFFICE 9	1.0	100	100
10	PL-10	OFFICE 10	1.0	100	100	10	PL-10	OFFICE 10	1.0	100	100
11	PL-11	OFFICE 11	1.0	100	100	11	PL-11	OFFICE 11	1.0	100	100
12	PL-12	OFFICE 12	1.0	100	100	12	PL-12	OFFICE 12	1.0	100	100
13	PL-13	CONFERENCE	1.0	100	100	13	PL-13	CONFERENCE	1.0	100	100
14	PL-14	RECEPTION SUITE A	1.0	100	100	14	PL-14	RECEPTION SUITE A	1.0	100	100
15	PL-15	WAREHOUSE	1.0	100	100	15	PL-15	WAREHOUSE	1.0	100	100
16	PL-16	WAREHOUSE	1.0	100	100	16	PL-16	WAREHOUSE	1.0	100	100
17	PL-17	WAREHOUSE	1.0	100	100	17	PL-17	WAREHOUSE	1.0	100	100
18	PL-18	WAREHOUSE	1.0	100	100	18	PL-18	WAREHOUSE	1.0	100	100
19	PL-19	WAREHOUSE	1.0	100	100	19	PL-19	WAREHOUSE	1.0	100	100
TOTAL CONNECTED LOAD (VA)			19.0	1900	1900	TOTAL CONNECTED LOAD (VA)			19.0	1900	1900

NO.	TYPE	LOCATION	AMPS	WATTAGE	LOAD	NO.	TYPE	LOCATION	AMPS	WATTAGE	LOAD
1	PL-1	OFFICE 1	1.0	100	100	1	PL-1	OFFICE 1	1.0	100	100
2	PL-2	OFFICE 2	1.0	100	100	2	PL-2	OFFICE 2	1.0	100	100
3	PL-3	OFFICE 3	1.0	100	100	3	PL-3	OFFICE 3	1.0	100	100
4	PL-4	OFFICE 4	1.0	100	100	4	PL-4	OFFICE 4	1.0	100	100
5	PL-5	OFFICE 5	1.0	100	100	5	PL-5	OFFICE 5	1.0	100	100
6	PL-6	OFFICE 6	1.0	100	100	6	PL-6	OFFICE 6	1.0	100	100
7	PL-7	OFFICE 7	1.0	100	100	7	PL-7	OFFICE 7	1.0	100	100
8	PL-8	OFFICE 8	1.0	100	100	8	PL-8	OFFICE 8	1.0	100	100
9	PL-9	OFFICE 9	1.0	100	100	9	PL-9	OFFICE 9	1.0	100	100
10	PL-10	OFFICE 10	1.0	100	100	10	PL-10	OFFICE 10	1.0	100	100
11	PL-11	OFFICE 11	1.0	100	100	11	PL-11	OFFICE 11	1.0	100	100
12	PL-12	OFFICE 12	1.0	100	100	12	PL-12	OFFICE 12	1.0	100	100
13	PL-13	CONFERENCE	1.0	100	100	13	PL-13	CONFERENCE	1.0	100	100
14	PL-14	RECEPTION SUITE A	1.0	100	100	14	PL-14	RECEPTION SUITE A	1.0	100	100
15	PL-15	WAREHOUSE	1.0	100	100	15	PL-15	WAREHOUSE	1.0	100	100
16	PL-16	WAREHOUSE	1.0	100	100	16	PL-16	WAREHOUSE	1.0	100	100
17	PL-17	WAREHOUSE	1.0	100	100	17	PL-17	WAREHOUSE	1.0	100	100
18	PL-18	WAREHOUSE	1.0	100	100	18	PL-18	WAREHOUSE	1.0	100	100
19	PL-19	WAREHOUSE	1.0	100	100	19	PL-19	WAREHOUSE	1.0	100	100
TOTAL CONNECTED LOAD (VA)			19.0	1900	1900	TOTAL CONNECTED LOAD (VA)			19.0	1900	1900

POWER PLAN SUITE A  
SCALE: 3/16"=1'-0"



FOR ELECTRICAL NOTES SEE E-5

- LEGEND**
- 2x4 RECESSED FLUORESCENT LAMP - STEEL HOUSING
  - ⚡ EMERGENCY LIGHT WITH 90 MIN. BATTERY BACKUP
  - ⊕ 120V, 20A DUPLEX RECEPTACLE
  - ⊕ 120V, 20A DUPLEX RECEPTACLE
  - ⊕ 120V, GFI RECEPTACLE
  - ⊕ 120V, GFI RECEPTACLE AT COUNTER HEIGHT
  - ⊕ DISCONNECT
  - ⊕ POWER PANEL
  - ⊕ SWITCH
  - ⊕ 3-WAY SWITCH
  - ⊕ EXIT LIGHT, 90 MINUTE BATTERY BACK-UP
  - ⊕ THERMOSTAT
  - ⊕ HIGH BAY LIGHT
  - ⊕ TELEPHONE / COMPUTER
  - ⊕ EXHAUST FAN
  - ⊕ 20 GAL WATER HEATER
  - ⊕ PULL CHAIN LIGHT
  - ⊕ EXTERIOR WATERPROOF WALL MOUNTED LIGHT W/ 90 MIN. BATTERY BACKUP



**DAMMON ENGINEERING, INC.**  
EMMETT DAMMON

**ARCHITECT ROBERT SOLBERGER**  
1095 FLORIDA AVENUE  
SLIDELL, LA. 70458  
985-649-5832

WWW.DAMMONENGINEERING.COM  
WEBSITE:  
EMAIL:  
DAMMONENG@BELL.SOUTH.NET

ARCHITECTURE  
ENGINEERING  
STUDIES  
PLANNING  
INVESTIGATION  
EXPERT WITNESS

NEW OFFICE BUILDING

PLATFORM CRANE  
POWELL DRIVE  
SLIDELL, LA

ELECTRICAL PLAN  
SUITE A

REV:

SCALE: AS NOTED

JOB#: 1898

DATE: 10-8-07

SHEET 19

E-1

OF 25